



Chipsmall Limited consists of a professional team with an average of over 10 year of expertise in the distribution of electronic components. Based in Hongkong, we have already established firm and mutual-benefit business relationships with customers from,Europe,America and south Asia,supplying obsolete and hard-to-find components to meet their specific needs.

With the principle of “Quality Parts,Customers Priority,Honest Operation,and Considerate Service”,our business mainly focus on the distribution of electronic components. Line cards we deal with include Microchip,ALPS,ROHM,Xilinx,Pulse,ON,Everlight and Freescale. Main products comprise IC,Modules,Potentiometer,IC Socket,Relay,Connector.Our parts cover such applications as commercial,industrial, and automotives areas.

We are looking forward to setting up business relationship with you and hope to provide you with the best service and solution. Let us make a better world for our industry!



## Contact us

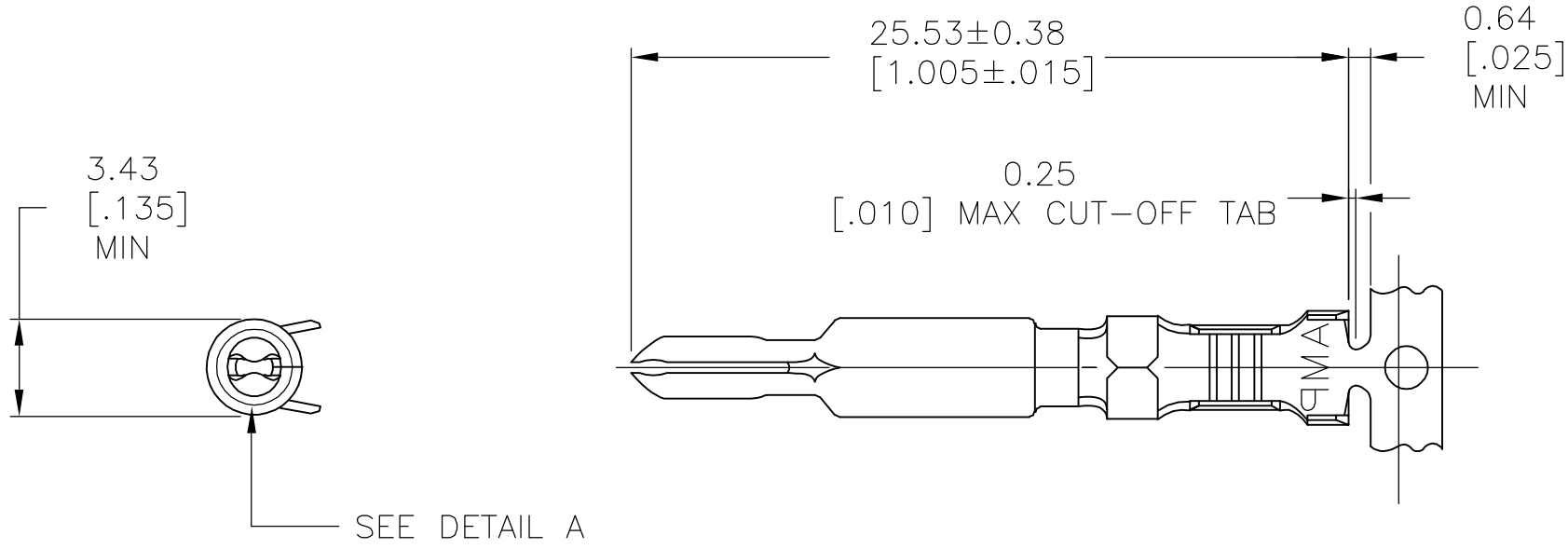
Tel: +86-755-8981 8866 Fax: +86-755-8427 6832

Email & Skype: [info@chipsmall.com](mailto:info@chipsmall.com) Web: [www.chipsmall.com](http://www.chipsmall.com)

Address: A1208, Overseas Decoration Building, #122 Zhenhua RD., Futian, Shenzhen, China



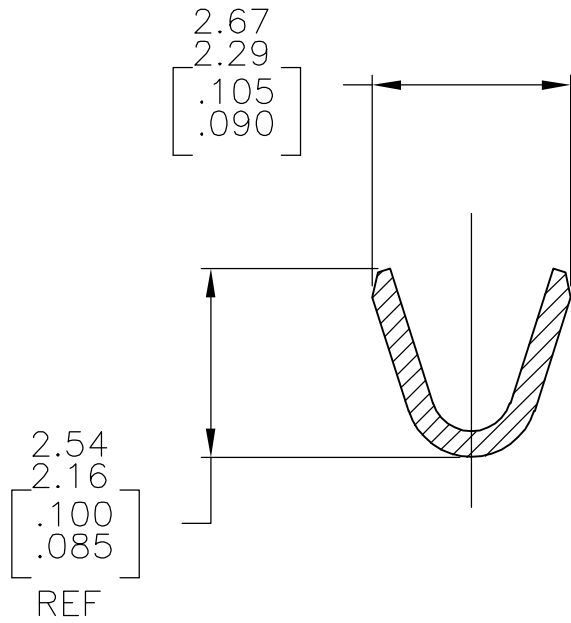
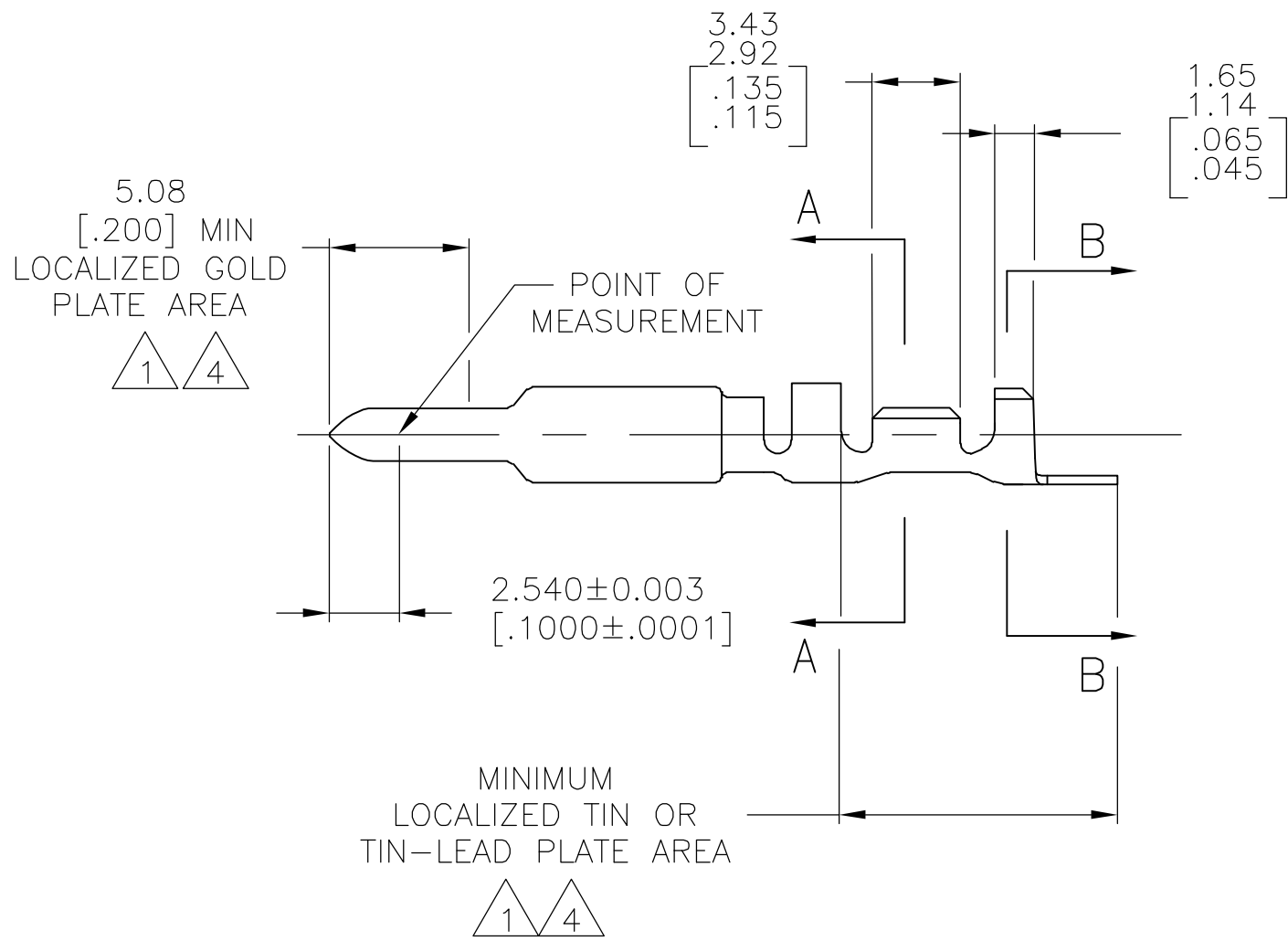
LOC	DIST	REVISIONS					
		P	LTR	DESCRIPTION	DATE	DWN	APVD
CM	00		F	EC 0G3B 0215 05	22SEP05	BSV	RCJ



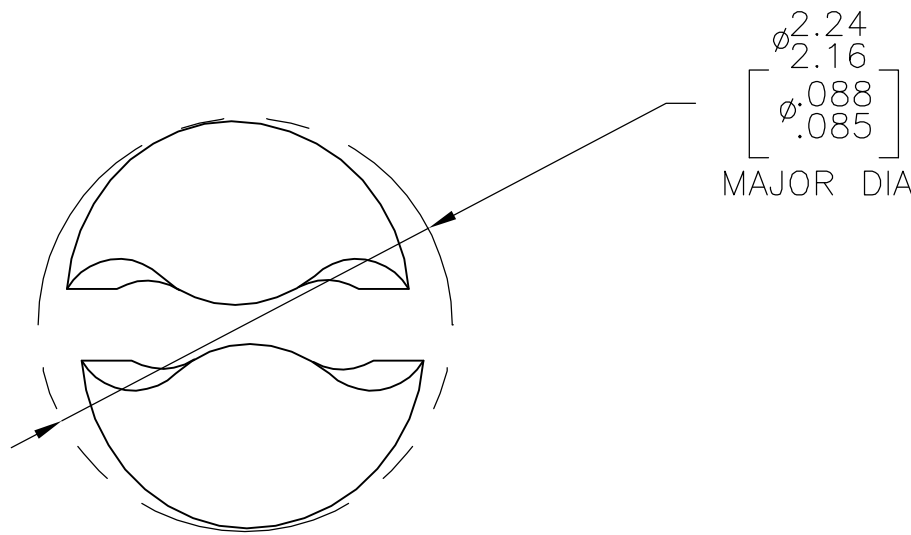
- 1

0.00076[.000030] MIN GOLD AT POINT OF MEASUREMENT IN THE LOCALIZED GOLD PLATE AREA, 0.00127[.000050] MIN TIN-LEAD IN TIN-LEAD PLATE AREA, 0.00127[.000050] MIN NICKEL UNDERPLATE ON ENTIRE CONTACT.
2. WIRE RANGE: 0.2–1mm<sup>2</sup> [24–18 AWG]  
INSULATION RANGE: 1.02–2.54[.040–.100] DIA.
3. DIMENSIONS IN BRACKETS ARE IN INCHES.
- 4

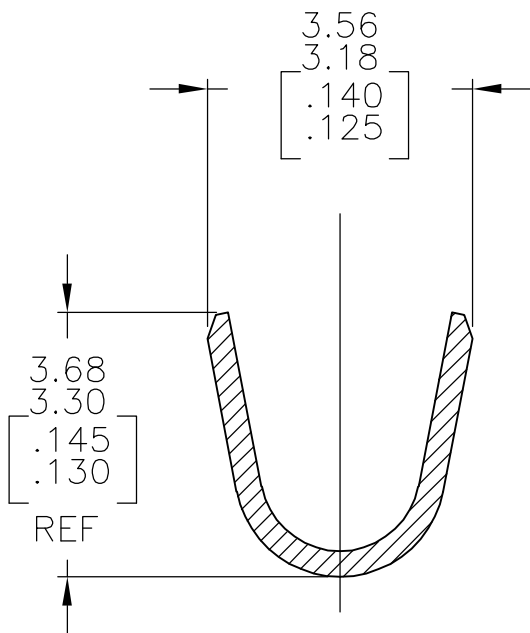
0.00076[.000030] MIN GOLD AT POINT OF MEASUREMENT IN THE LOCALIZED GOLD PLATE AREA, 0.00127[.000050] MIN TIN IN TIN PLATE AREA, 0.00127[.000050] MIN NICKEL UNDERPLATE ON ENTIRE CONTACT.



SECTION A–A  
SCALE 10:1



DETAIL A  
SCALE 20:1



SECTION B–B  
SCALE 10:1

METRIC

GOLD <div>4</div>	0.30 [.012]	BRASS	1–770009–0
GOLD <div>1</div>	0.30 [.012]	BRASS	770009–2
PRE–TIN	0.30 [.012]	BRASS	770009–1
FINISH	MATERIAL		PART NUMBER

THIS DRAWING IS A CONTROLLED DOCUMENT.		DWN S. CARPENTER		20MAY03		<b>tyco</b> <b>Electronics</b> Tyco Electronics Corporation Harrisburg, PA 17105-3608							
DIMENSIONS: mm [INCHES]		TOLERANCES UNLESS OTHERWISE SPECIFIED:		CHK C. JONES		20MAY03		NAME  PIN, UNIVERSAL MATE-N-LOK(TM) II					
		0 PLC ± - 1 PLC ± - 2 PLC ± - 3 PLC ± - 4 PLC ± - ANGLES ± -		APVD C. JONES		20MAY03							
				PRODUCT SPEC —		SIZE A2		CAGE CODE 00779		DRAWING NO C-770009		RESTRICTED TO —	
MATERIAL  SEE TABLE		FINISH  SEE TABLE		WEIGHT —		APPLICATION SPEC —							
CUSTOMER DRAWING						SCALE 4:1		SHEET 1 of 1		REV F			