



Chipsmall Limited consists of a professional team with an average of over 10 year of expertise in the distribution of electronic components. Based in Hongkong, we have already established firm and mutual-benefit business relationships with customers from,Europe,America and south Asia,supplying obsolete and hard-to-find components to meet their specific needs.

With the principle of “Quality Parts,Customers Priority,Honest Operation,and Considerate Service”,our business mainly focus on the distribution of electronic components. Line cards we deal with include Microchip,ALPS,ROHM,Xilinx,Pulse,ON,Everlight and Freescale. Main products comprise IC,Modules,Potentiometer,IC Socket,Relay,Connector.Our parts cover such applications as commercial,industrial, and automotives areas.

We are looking forward to setting up business relationship with you and hope to provide you with the best service and solution. Let us make a better world for our industry!



Contact us

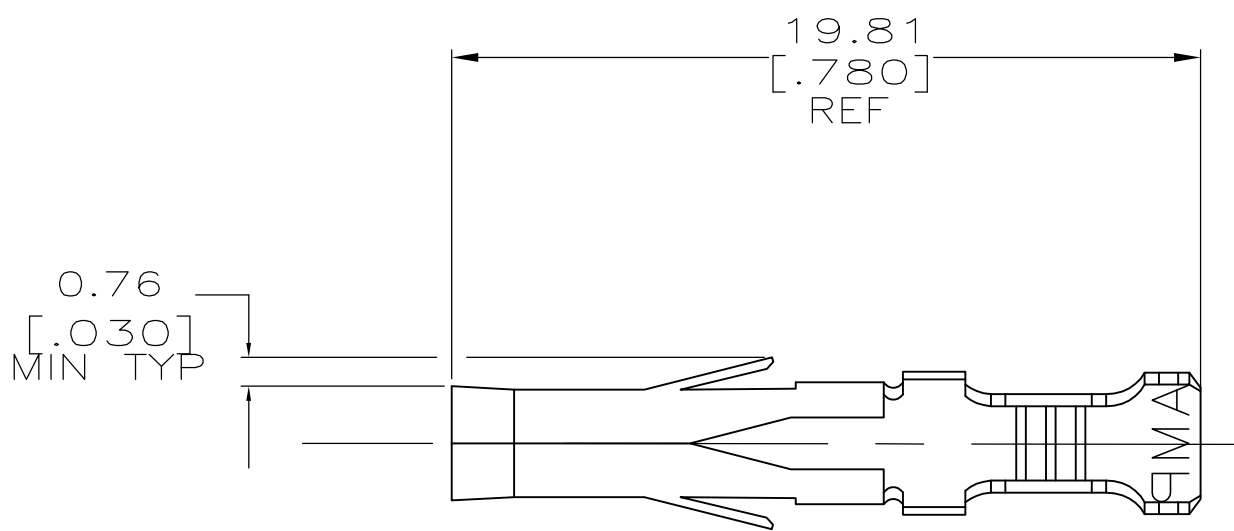
Tel: +86-755-8981 8866 Fax: +86-755-8427 6832

Email & Skype: info@chipsmall.com Web: www.chipsmall.com

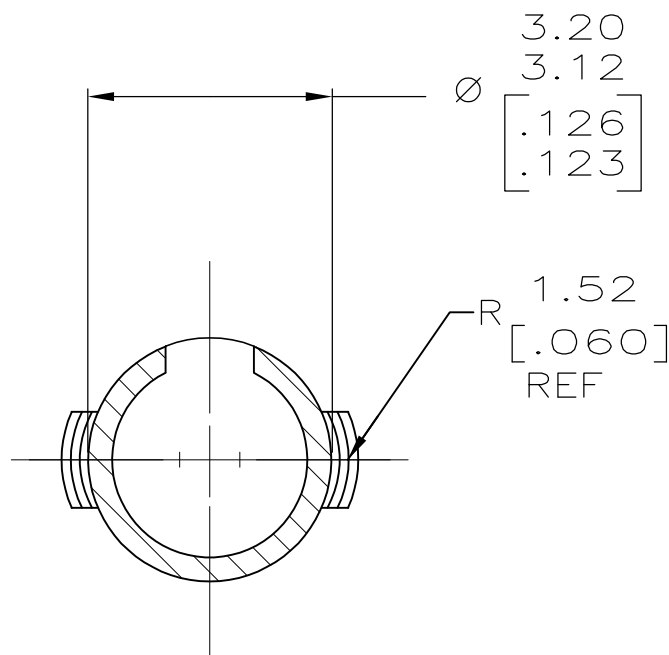
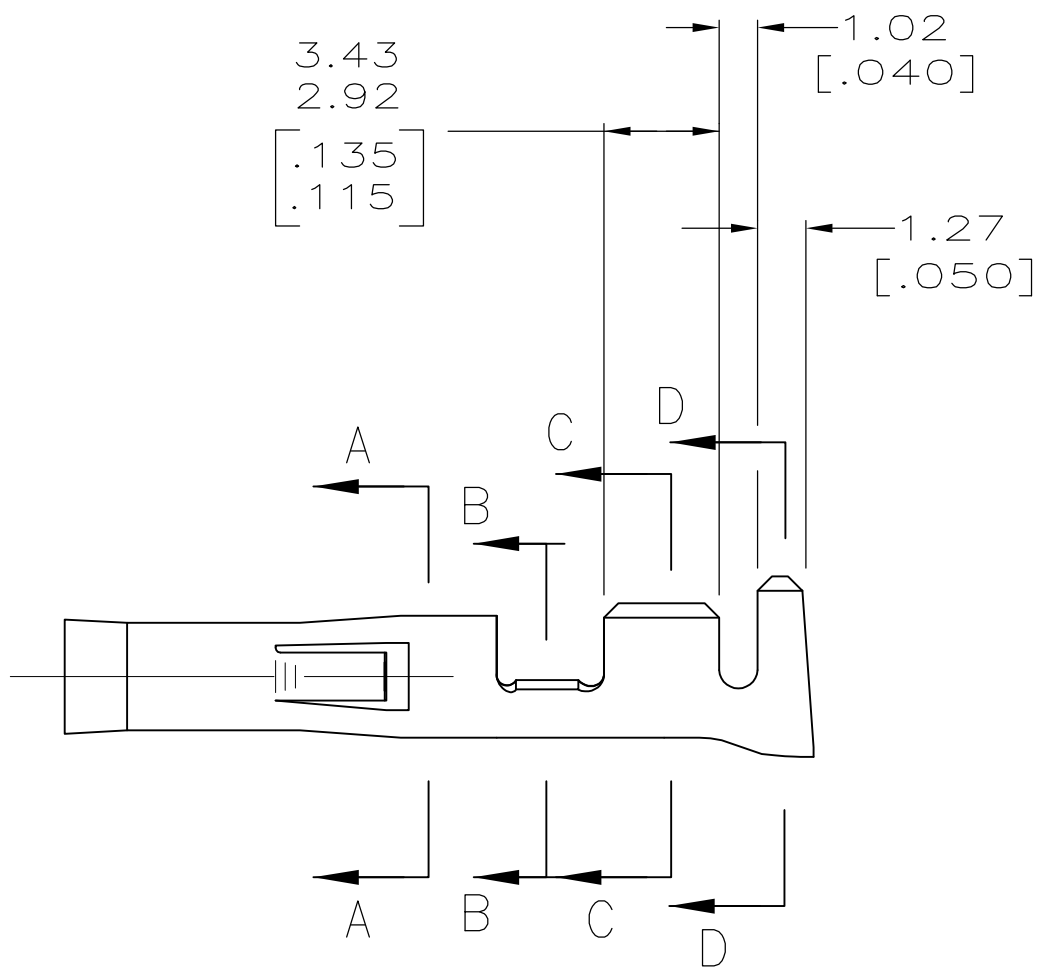
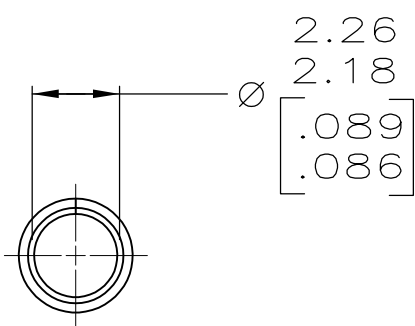
Address: A1208, Overseas Decoration Building, #122 Zhenhua RD., Futian, Shenzhen, China



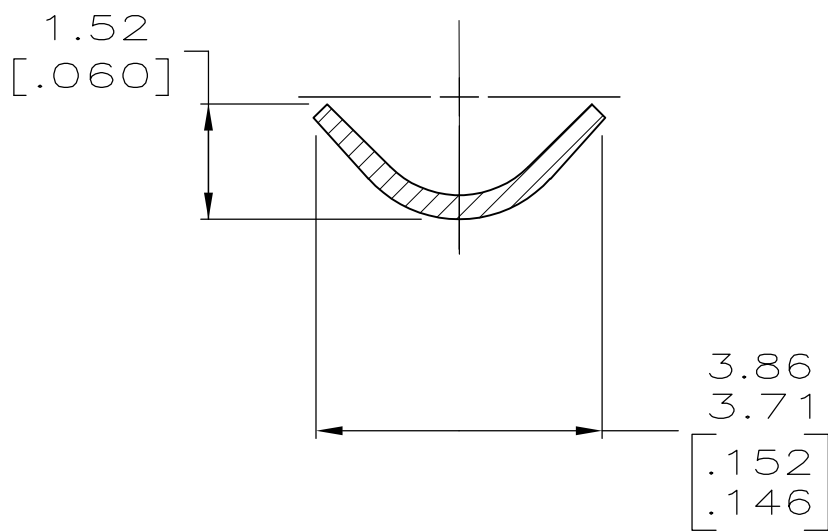
LOC		DIST		REVISIONS			
CM	O	P	LTR	DESCRIPTION	DATE	DWN	APVD
			F	ECO-07-014387	19JUN07	KW	CC



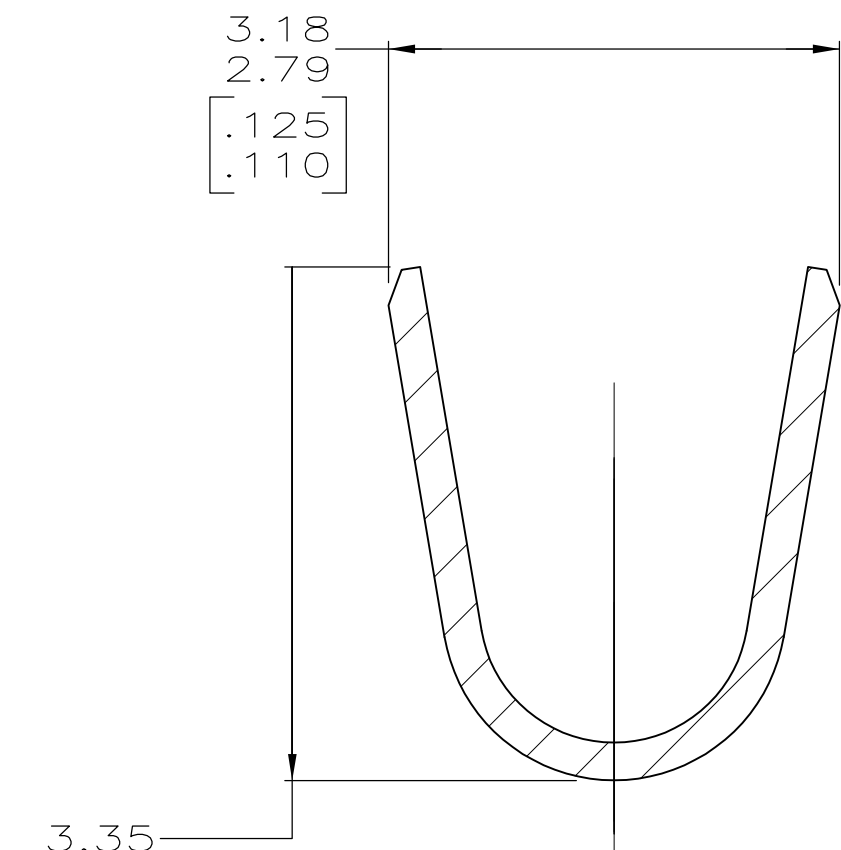
- ⚠ 0.00127 [.000050] NICKEL PLATE WITH 0.00076 [.000030] GOLD PLATE ON INSIDE OF RECEPTACLE.
2. WIRE RANGE: 0.5–2mm² (20–14 AWG).
3. INSULATION RANGE: 3.56 [.140] MAX. DIA.
4. DIMENSIONS IN BRACKETS ARE IN INCHES.



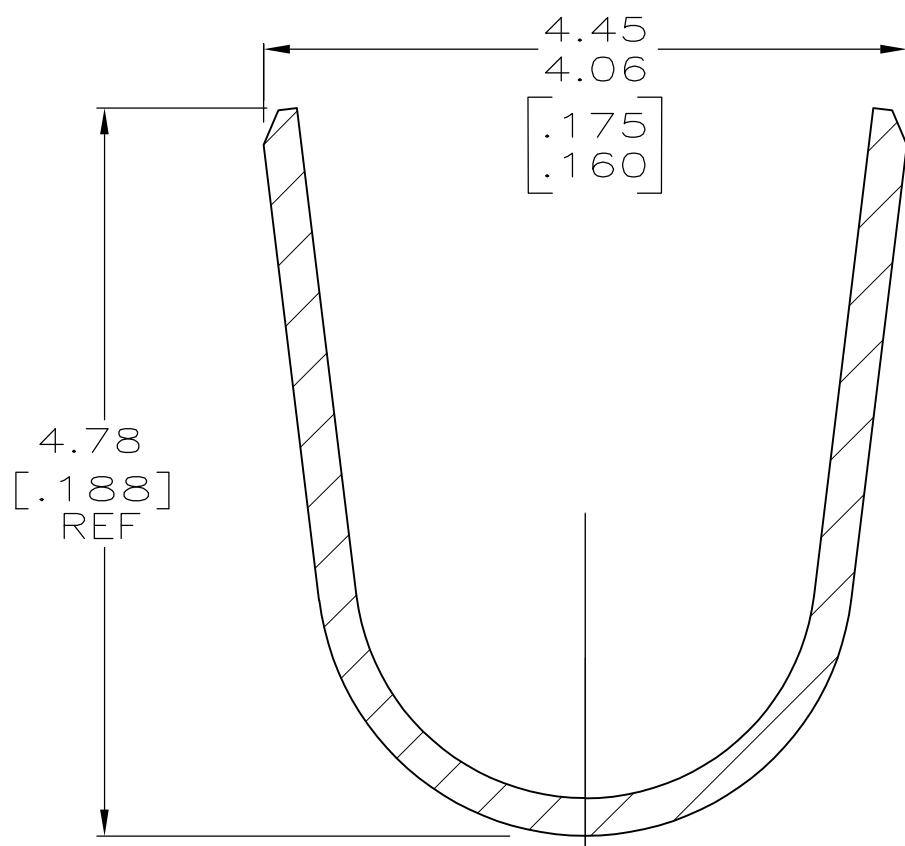
SECTION A—A
SCALE 10:1



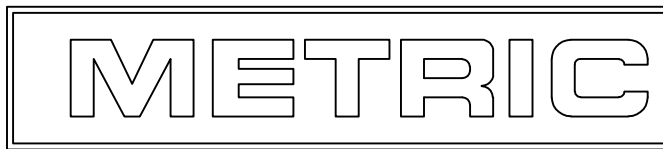
SECTION B—B
SCALE 10:1



SECTION C—C
SCALE 10:1



SECTION D—D
SCALE 10:1



PRE-TIN	0.25 [.010] PHOS BRZ	770144-6
⚠	0.25 [.010] BRASS	770144-5
PRE-TIN	0.25 [.010] BRASS	770144-1
FINISH	MATERIAL	PART NO

THIS DRAWING IS A CONTROLLED DOCUMENT.		DWN K. WHITAKER CHK C. CASH APVD C. CASH	19JUN2007 19JUN2007 19JUN2007	Tyco Electronics Corporation Harriburg, PA 17105-3608	
DIMENSIONS: mm [INCHES]	TOLERANCES UNLESS OTHERWISE SPECIFIED:	NAME		SOCKET, .093, LOOSE PIECE, COMMERCIAL PIN AND SOCKET	
		PRODUCT SPEC		—	
	0. PLC ± — 1. PLC ± — 2. PLC ± 0.13 [.005] 3. PLC ± — 4. PLC ± — ANGLES ± —	APPLICATION SPEC		—	
		WEIGHT		—	
MATERIAL SEE TABLE		CUSTOMER DRAWING		SCALE 5:1	SHEET 1 OF 1 REV F