



Chipsmall Limited consists of a professional team with an average of over 10 year of expertise in the distribution of electronic components. Based in Hongkong, we have already established firm and mutual-benefit business relationships with customers from,Europe,America and south Asia,supplying obsolete and hard-to-find components to meet their specific needs.

With the principle of “Quality Parts,Customers Priority,Honest Operation,and Considerate Service”,our business mainly focus on the distribution of electronic components. Line cards we deal with include Microchip,ALPS,ROHM,Xilinx,Pulse,ON,Everlight and Freescale. Main products comprise IC,Modules,Potentiometer,IC Socket,Relay,Connector.Our parts cover such applications as commercial,industrial, and automotives areas.

We are looking forward to setting up business relationship with you and hope to provide you with the best service and solution. Let us make a better world for our industry!



Contact us

Tel: +86-755-8981 8866 Fax: +86-755-8427 6832

Email & Skype: info@chipsmall.com Web: www.chipsmall.com

Address: A1208, Overseas Decoration Building, #122 Zhenhua RD., Futian, Shenzhen, China



LOC		DIST		REVISIONS						
CM		O		P	LTR	DESCRIPTION		DATE	DWN	APVD
			G1	REVISED PER ECO-11-005027				11MAR11	RK	HMR

- 1

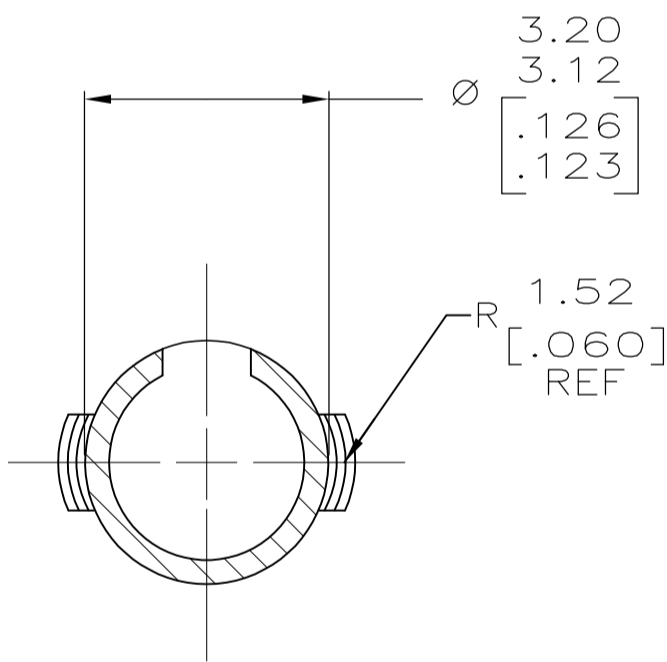
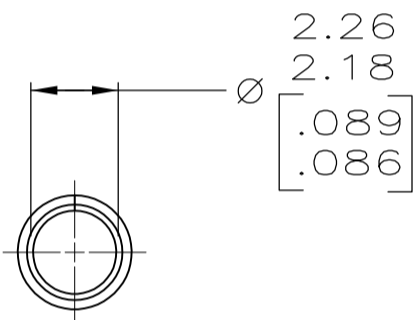
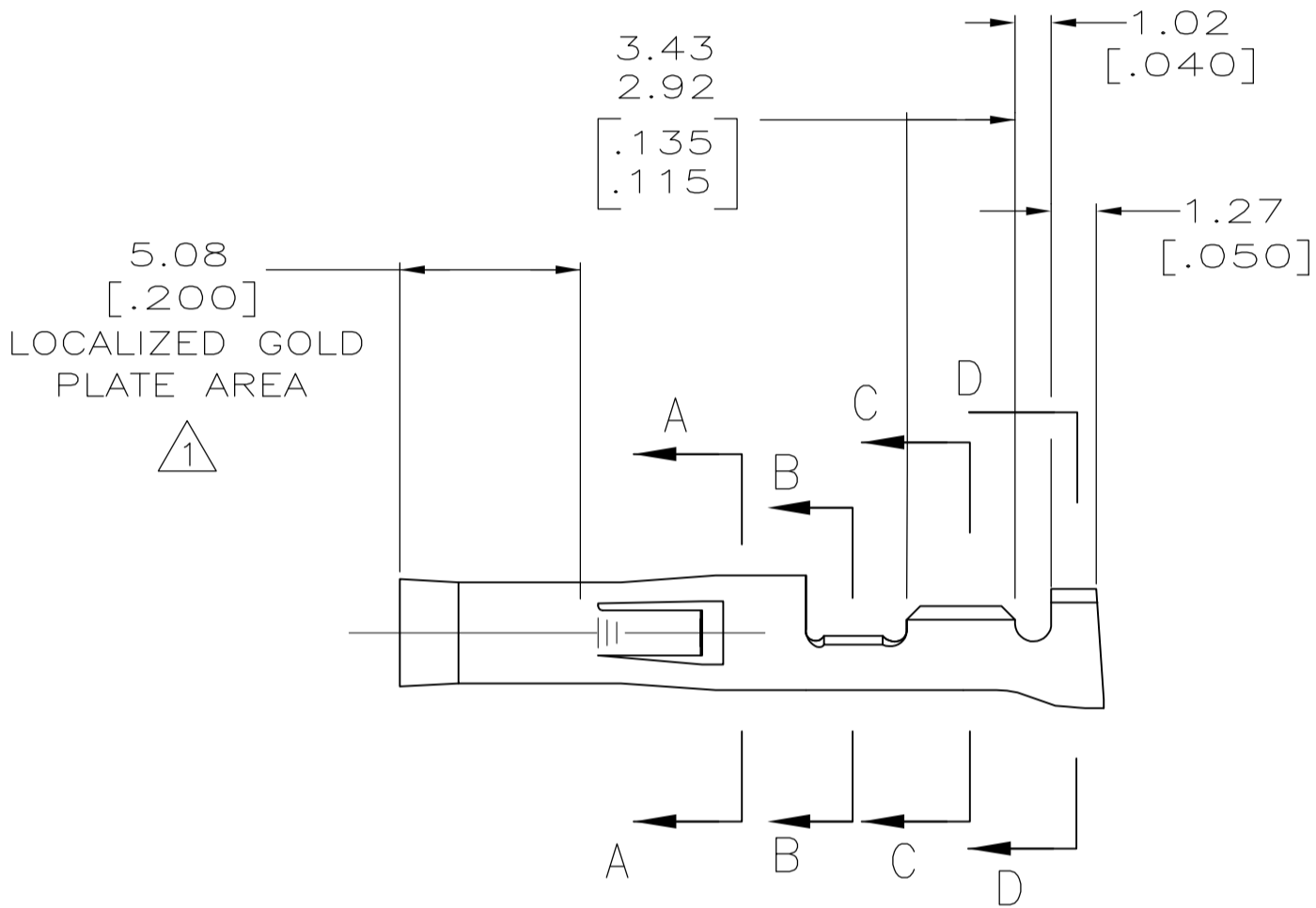
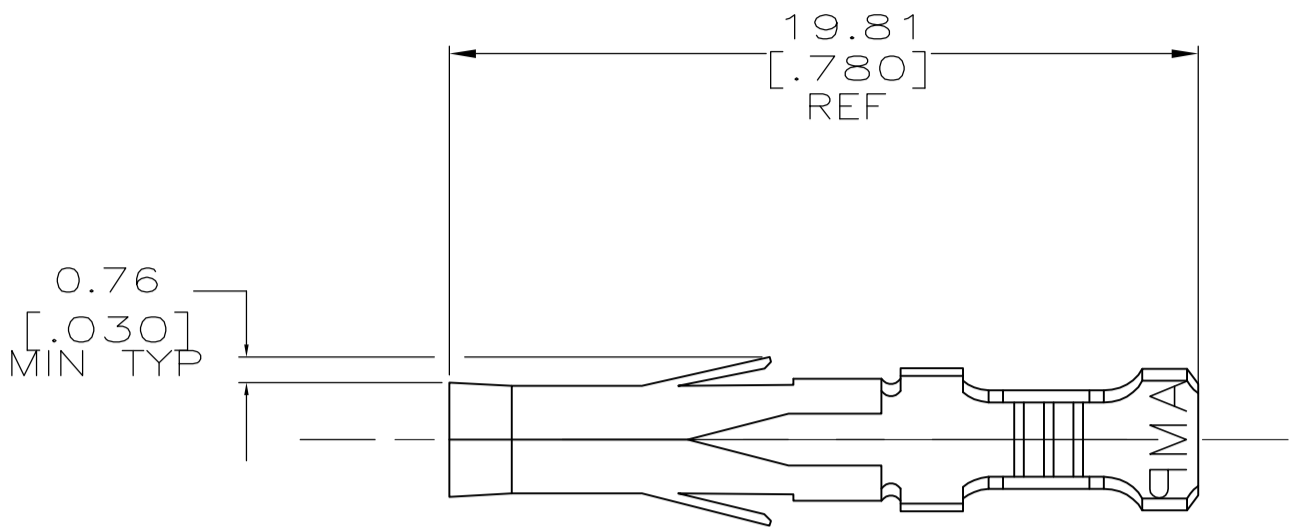
0.00127 [.000050] MIN GOLD IN LOCALIZED GOLD PLATE AREA OVER 0.00127 [.000050] MIN NICKEL.
- 2

0.00127 [.000050] NICKEL PLATE ON ENTIRE CONTACT WITH 0.000762 [.000030] GOLD PLATE ON INSIDE OF RECEPTACLE AND GOLD FLASH ON REMAINDER OF CONTACT.
- 3

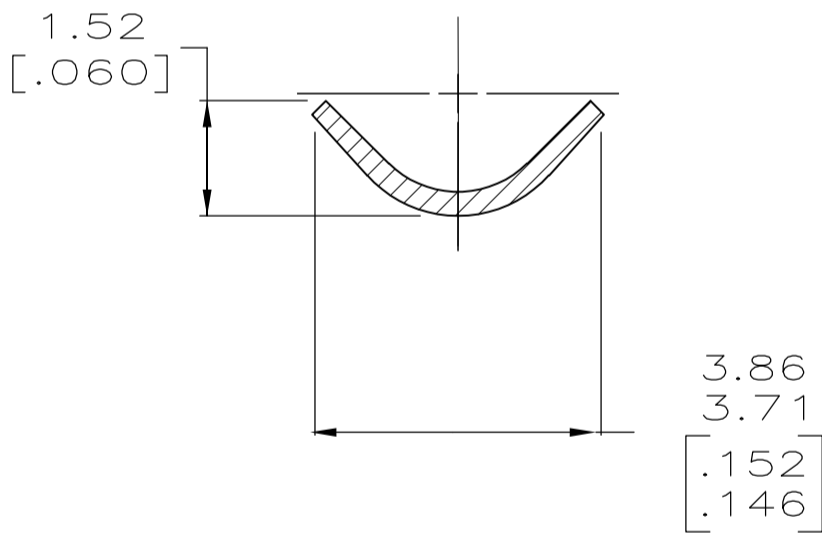
WIRE RANGE: 0.3 – 0.84mm² (24–18 AWG).
- 4

INSULATION RANGE: 2.79 [.110] MAX. DIA.
- 5

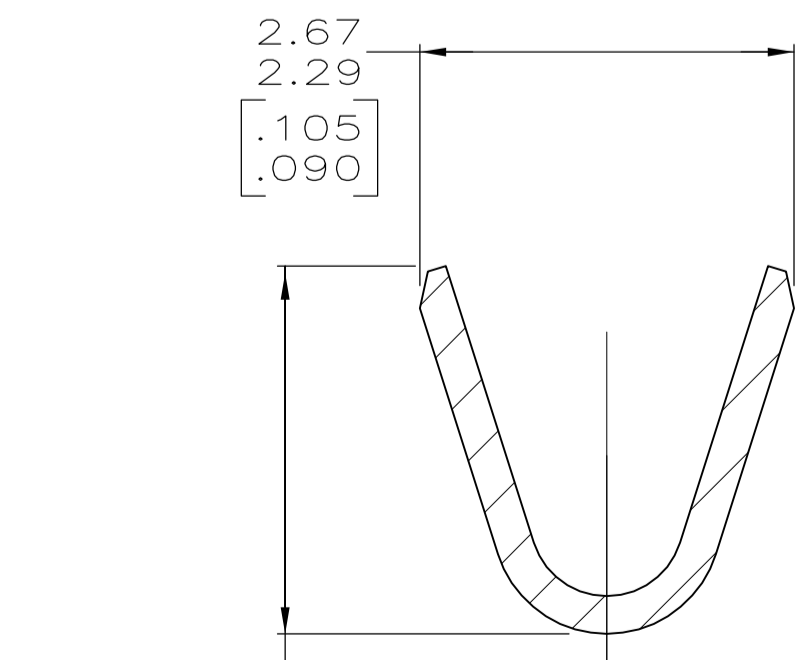
DIMENSIONS IN BRACKETS ARE IN INCHES.



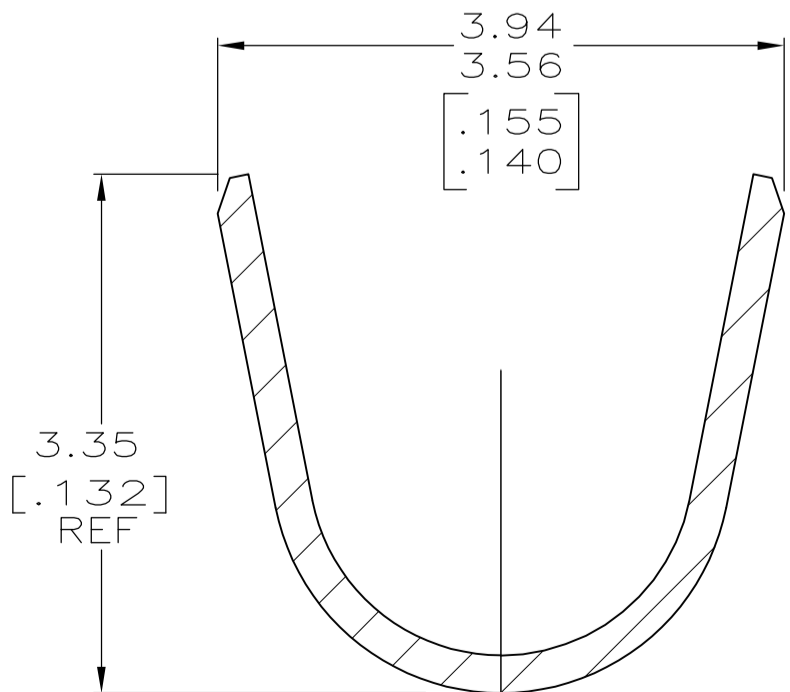
SECTION A—A
SCALE 10:1



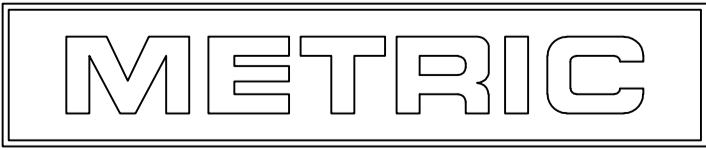
SECTION B—B
SCALE 10:1



SECTION C—C
SCALE 10:1



SECTION D—D
SCALE 10:1



<div>2</div>	0.25 [.010] BRASS	770146–5
<div>1</div>	0.25 [.010] BRASS	770146–3
PRE–TIN	0.25 [.010] BRASS	770146–1
FINISH	MATERIAL	PART NO

THIS DRAWING IS A CONTROLLED DOCUMENT.		DWN K. WHITAKER CHK C. CASH APVD C. CASH	19JUN2007 19JUN2007 19JUN2007	TE Connectivity	
DIMENSIONS: mm [INCHES]	TOLERANCES UNLESS OTHERWISE SPECIFIED:	0. PLC 1. PLC 2. PLC 3. PLC 4. PLC ANGLES	± – ± – ± 0.13 [.005] ± – ± – ± –	NAME	SOCKET, .093, LOOSE PIECE, COMMERCIAL PIN AND SOCKET
MATERIAL SEE TABLE	FINISH SEE TABLE	WEIGHT	—	SIZE A1	CAGE CODE 00779
CUSTOMER DRAWING		SCALE	5:1	SHEET	1 OF 1
		REV	G1		