



Chipsmall Limited consists of a professional team with an average of over 10 year of expertise in the distribution of electronic components. Based in Hongkong, we have already established firm and mutual-benefit business relationships with customers from,Europe,America and south Asia,supplying obsolete and hard-to-find components to meet their specific needs.

With the principle of “Quality Parts,Customers Priority,Honest Operation,and Considerate Service”,our business mainly focus on the distribution of electronic components. Line cards we deal with include Microchip,ALPS,ROHM,Xilinx,Pulse,ON,Everlight and Freescale. Main products comprise IC,Modules,Potentiometer,IC Socket,Relay,Connector.Our parts cover such applications as commercial,industrial, and automotives areas.

We are looking forward to setting up business relationship with you and hope to provide you with the best service and solution. Let us make a better world for our industry!



Contact us

Tel: +86-755-8981 8866 Fax: +86-755-8427 6832

Email & Skype: info@chipsmall.com Web: www.chipsmall.com

Address: A1208, Overseas Decoration Building, #122 Zhenhua RD., Futian, Shenzhen, China



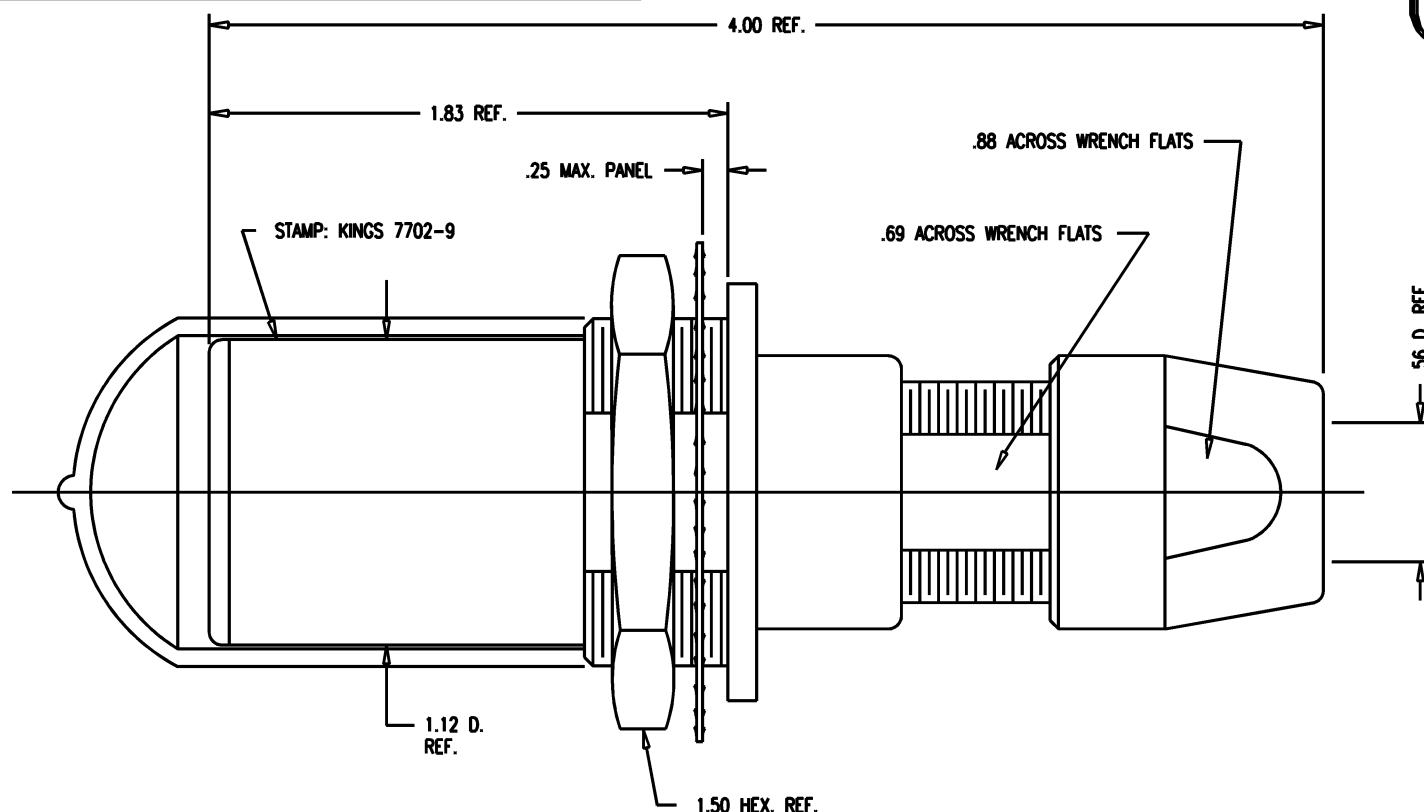
DASH NO.	M CODE	MADE FROM
----------	--------	-----------

GSD

7702-9

REVISIONS

ISSUE	CHANGES
0	ER 35435 KH 04/17/95
1	CN 37238 D KH 02/03/97
2	CN 37289 A KH 03/13/97



NOTES:

1. FOR USE WITH 740 CABLE GROUP.
2. FOR CABLING INSTRUCTIONS SEE KAI-8010.
3. FOR CABLE TRIMMING USE KTJ-300 AND KTD-304.
4. FOR CRIMPING USE DIE KTH-2041.

5. MATERIALS:

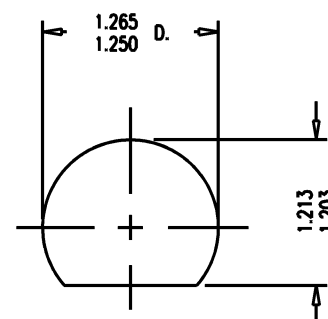
INSULATORS-TEFLON, ASTM-D-4894
 LOCKWASHER-SPRING STEEL, ASTM-A-682
 GASKETS-SILICONE RUBBER, ZZ-R-765
 CAP-VINYL
 K-GRIP SLEEVE-COMMERCIAL BRONZE, ASTM-B-135
 CENTER CONTACT
 OUTER CONTACT SPRING } BER. COP., ASTM-B-196
 INSERT
 ALL OTHER METAL PARTS-BRASS, ASTM-B16

6. FINISHES:

CENTER CONTACT } GOLD PLATE PER MIL-G-45204
 OUTER CONTACT SPRING }
 LOCKWASHER }
 NUTS } KINGS TARNISH RESISTANT NICKEL FINISH (TR-5)
 COLLET }
 OUTER BODIES }

7. ELECTRICAL CHARACTERISTICS:

NOMINAL IMPEDANCE: 75 OHMS
 FREQUENCY RANGE: DC-500 MHZ
 VOLTAGE BREAKDOWN: CENTER CONDUCTOR/INNER GROUND: 1500 VRMS
 INNER GROUND/OUTER GROUND: 500 VRMS



GSD

MOUNTING HOLE

KAM5573

SCALE 2:1

APPROX SURFACE AREA

USED ON

REF: KP-8021-747-400

JK, BKHD, TRI-LOC
 SERIAL DIGITAL

DRAWN	KH	DATE	04/17/95
DESIGN	DW	DATE	04/18/95
APPR.		DATE	

KINGS
 ELECTRONICS CO., INC.
 TUCKAHOE, NEW YORK 10707

7702-9