



Chipsmall Limited consists of a professional team with an average of over 10 year of expertise in the distribution of electronic components. Based in Hongkong, we have already established firm and mutual-benefit business relationships with customers from,Europe,America and south Asia,supplying obsolete and hard-to-find components to meet their specific needs.

With the principle of “Quality Parts,Customers Priority,Honest Operation,and Considerate Service”,our business mainly focus on the distribution of electronic components. Line cards we deal with include Microchip,ALPS,ROHM,Xilinx,Pulse,ON,Everlight and Freescale. Main products comprise IC,Modules,Potentiometer,IC Socket,Relay,Connector.Our parts cover such applications as commercial,industrial, and automotives areas.

We are looking forward to setting up business relationship with you and hope to provide you with the best service and solution. Let us make a better world for our industry!



## Contact us

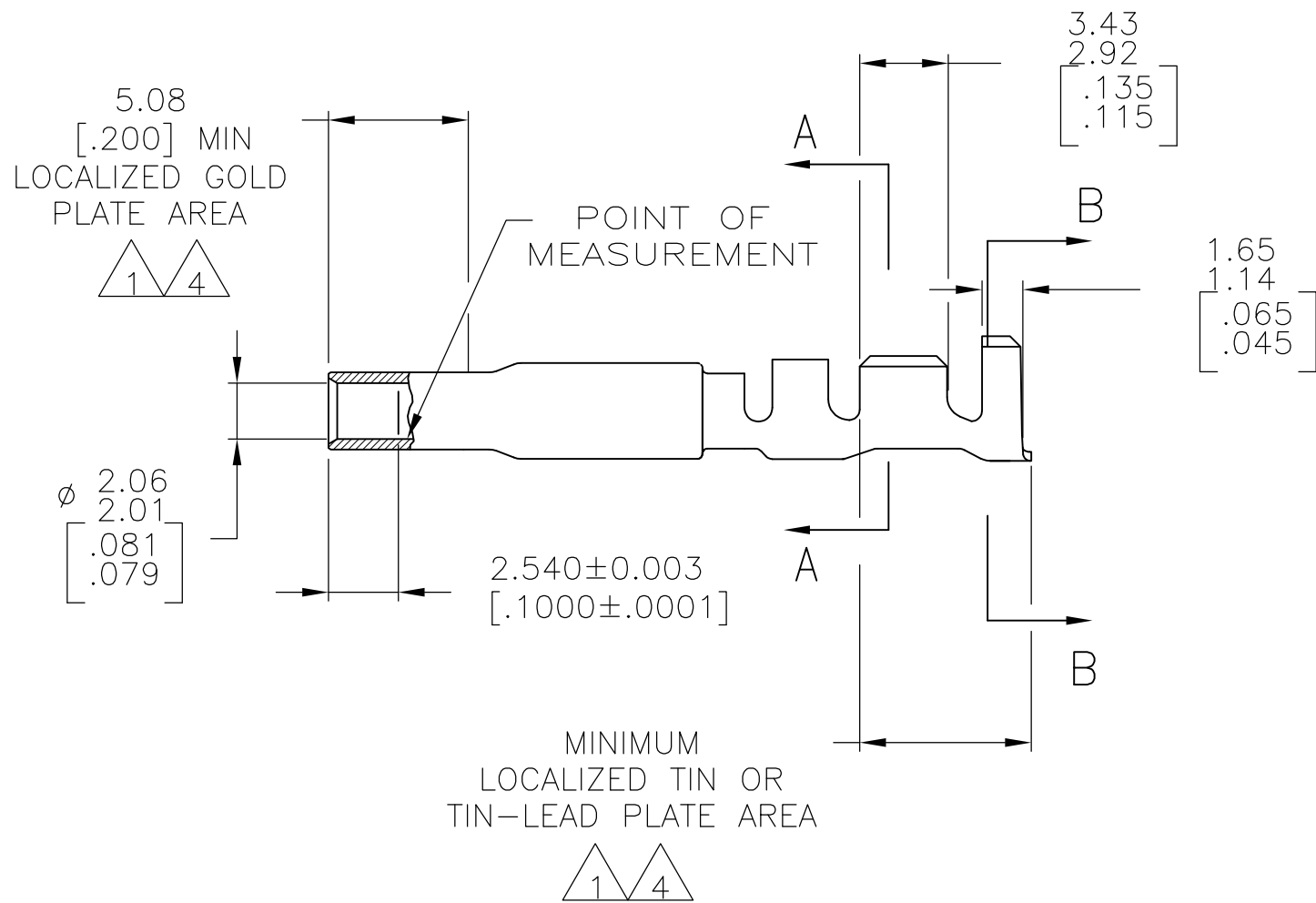
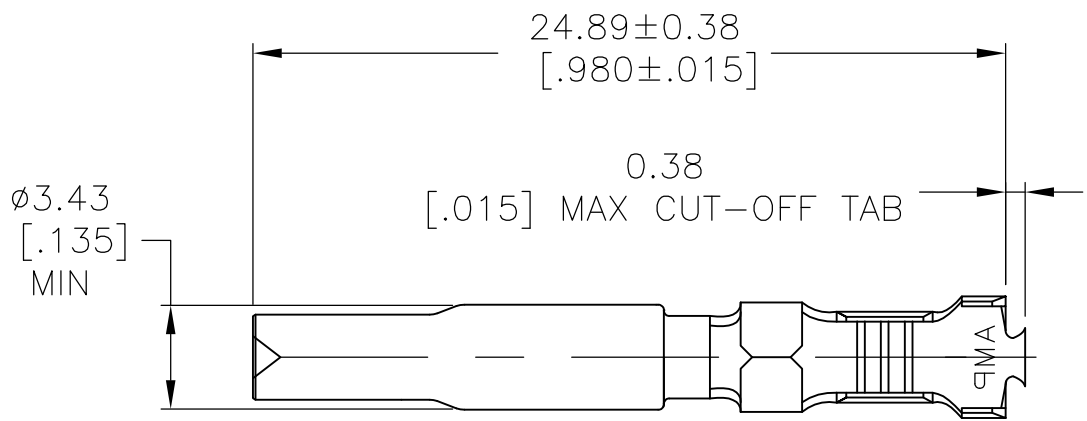
Tel: +86-755-8981 8866 Fax: +86-755-8427 6832

Email & Skype: [info@chipsmall.com](mailto:info@chipsmall.com) Web: [www.chipsmall.com](http://www.chipsmall.com)

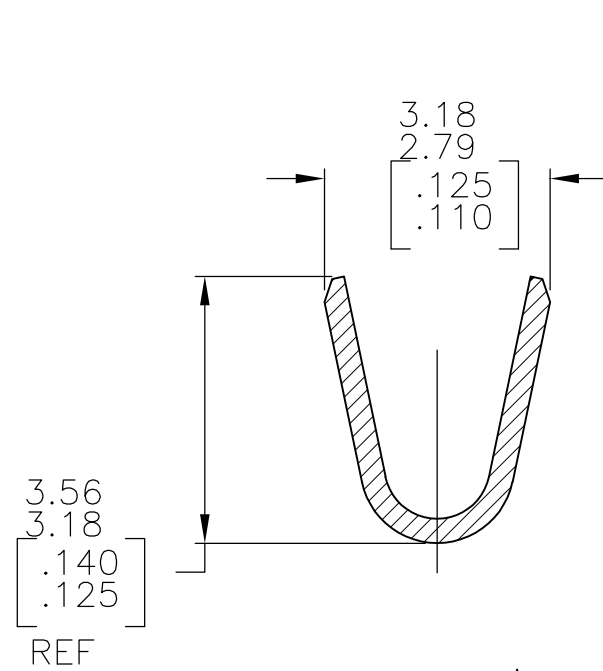
Address: A1208, Overseas Decoration Building, #122 Zhenhua RD., Futian, Shenzhen, China



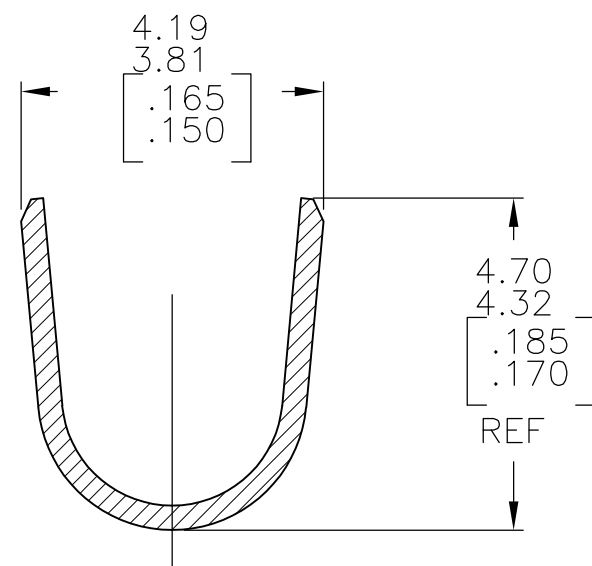
LOC	DIST	REVISIONS				
		P	LTR	DESCRIPTION	DATE	DWN
CM	0		C1	REVISED PER ECO-11-004820	11MAR11	RK
						HMR



1. 0.00076[.000030] MIN GOLD AT POINT OF MEASUREMENT IN THE LOCALIZED GOLD PLATE AREA, 0.00127[.000050] MIN TIN-LEAD IN TIN-LEAD PLATE AREA, 0.00127[.000050] MIN NICKEL UNDERPLATE ON ENTIRE CONTACT.
2. WIRE RANGE: .5-2mm<sup>2</sup> [20-14 AWG].  
INSULATION RANGE: 1.52-3.30[.060-.130] DIA.
3. DIMENSIONS IN BRACKETS ARE IN INCHES.
4. 0.00076[.000030] MIN GOLD AT POINT OF MEASUREMENT IN THE LOCALIZED GOLD PLATE AREA, 0.00127[.000050] MIN TIN IN TIN PLATE AREA, 0.00127[.000050] MIN NICKEL UNDERPLATE ON ENTIRE CONTACT.



SECTION A-A  
SCALE 10:1



SECTION B-B  
SCALE 10:1

GOLD 4	0.30 [.012] PH BRZ	1-770251-0
GOLD 1	0.30 [.012] PH BRZ	770251-4
PRE-TIN	0.30 [.012] PH BRZ	770251-3
FINISH	MATERIAL	PART NO

METRIC

THIS DRAWING IS A CONTROLLED DOCUMENT.		DWN K. SALMON 20JAN93	TE Connectivity			
DIMENSIONS: mm [INCHES]		CHK R. SWING 20JAN93				
		APVD M. TRULL 01APR93	NAME SOCKET, LOOSE PIECE, UNIVERSAL MATE-N-LOK(TM) II			
		PRODUCT SPEC	-			
TOLERANCES UNLESS OTHERWISE SPECIFIED:		APPLICATION SPEC	-			
0 PLC ± -		WEIGHT -	SIZE A2	CAGE CODE 00779	DRAWING NO C-770251	RESTRICTED TO -
1 PLC ± -		CUSTOMER DRAWING		SCALE 4:1	SHEET 1 OF 1	REV C1
2 PLC ± -						
3 PLC ± -						
4 PLC ± -						
ANGLES ± -						
FINISH						
SEE TABLE						
SEE TABLE						