



Chipsmall Limited consists of a professional team with an average of over 10 year of expertise in the distribution of electronic components. Based in Hongkong, we have already established firm and mutual-benefit business relationships with customers from,Europe,America and south Asia,supplying obsolete and hard-to-find components to meet their specific needs.

With the principle of “Quality Parts,Customers Priority,Honest Operation,and Considerate Service”,our business mainly focus on the distribution of electronic components. Line cards we deal with include Microchip,ALPS,ROHM,Xilinx,Pulse,ON,Everlight and Freescale. Main products comprise IC,Modules,Potentiometer,IC Socket,Relay,Connector.Our parts cover such applications as commercial,industrial, and automotives areas.

We are looking forward to setting up business relationship with you and hope to provide you with the best service and solution. Let us make a better world for our industry!



Contact us

Tel: +86-755-8981 8866 Fax: +86-755-8427 6832

Email & Skype: info@chipsmall.com Web: www.chipsmall.com

Address: A1208, Overseas Decoration Building, #122 Zhenhua RD., Futian, Shenzhen, China

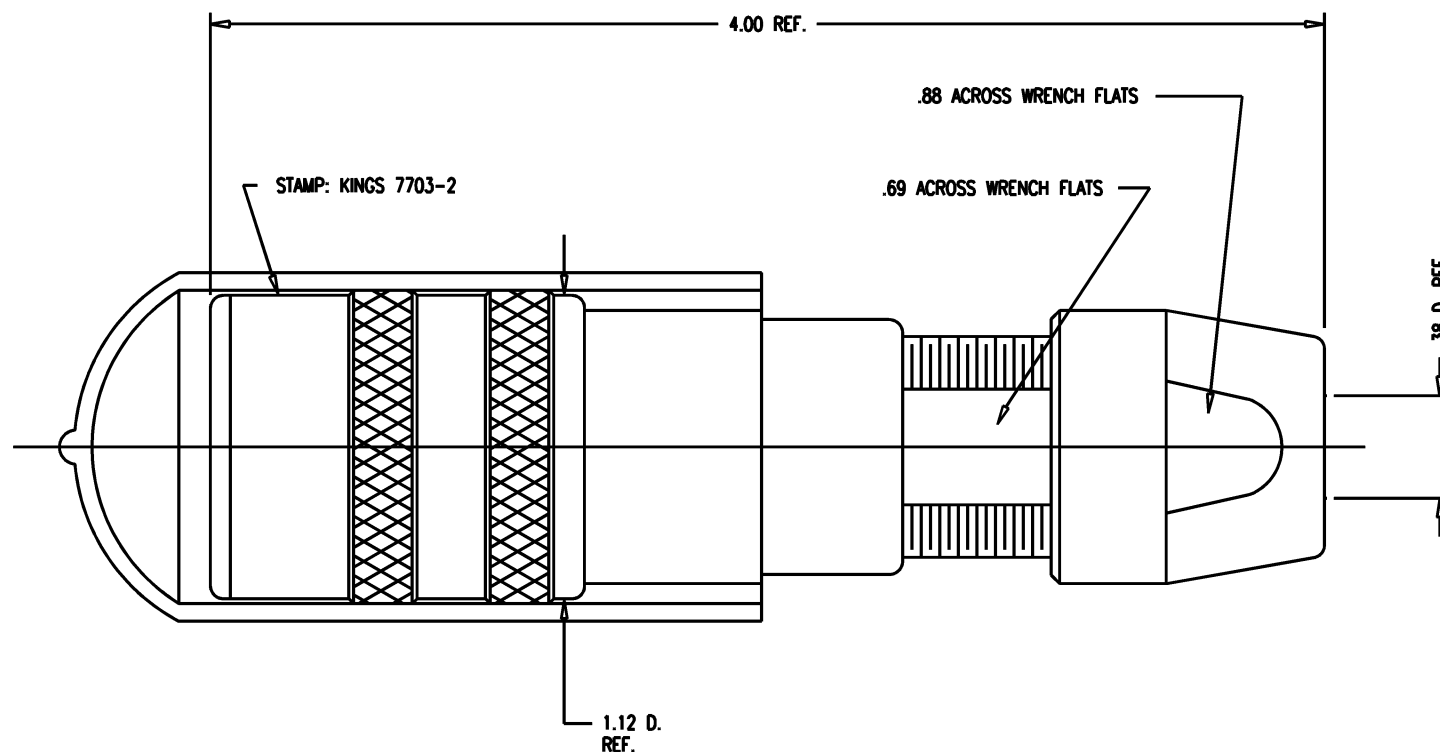


DASH NO.	M CODE	MADE FROM
----------	--------	-----------

GSD

7703-2

REVISIONS		
ISSUE	CHANGES	
0	ER 35423 KH 04/10/95	
1	CN 36678 A KH 11/07/95	
2	CN 37238 D KH 02/03/97	
3	CN 39531 C AM 07/12/06	
4	CN 39551 E AM 07/31/06	



NOTES:

- FOR USE WITH 730 CABLE GROUP.
- FOR CABLING INSTRUCTIONS SEE KAI-8010.
- FOR CRIMPING USE DIE SIZE KTH-2002.
- MATERIALS:
INSULATORS: TEFLON, ASTM-D-4894
GASKETS: SILICONE RUBBER, ZZ-R-765
CAP: VINYL
K-GRIP SLEEVE: COM'L BRONZE, ASTM-B-135
CENTER CONTACT
OUTER CONTACT SPRING } BER. COPPER, ASTM-B-196
INSERT
ALL OTHER METAL PARTS: BRASS, ASTM-B16

- FINISHES:
CENTER CONTACT
OUTER CONTACT SPRING } GOLD PLATE PER MIL-G-45204
NUTS
COLLET } KINGS TARNISH RESISTANT NICKEL FINISH (TR-5)
BODIES
ALL OTHER METAL PARTS: SILVER PLATE PER QQ-S-365
- ELECTRICAL CHARACTERISTICS:
NOMINAL IMPEDANCE: 75 ~W
FREQUENCY RANGE: DC-500 MHZ
VOLTAGE BREAKDOWN: CENTER CONDUCTOR/INNER GROUND: 1500 VRMS
INNER GROUND/OUTER GROUND: 500 VRMS

SCALE 2:1		
APPROX SURFACE AREA		
USED ON		
REF: KP-8020-730-400		
JK, TRI-LOC, SERIAL DIGITAL		
DRAWN KH	DATE	04/10/95
DESIGN DW	DATE	04/11/95
APPR.	DATE	
 ROCK HILL, SOUTH CAROLINA 29730		
7703-2		

GSD