



Chipsmall Limited consists of a professional team with an average of over 10 year of expertise in the distribution of electronic components. Based in Hongkong, we have already established firm and mutual-benefit business relationships with customers from,Europe,America and south Asia,supplying obsolete and hard-to-find components to meet their specific needs.

With the principle of “Quality Parts,Customers Priority,Honest Operation,and Considerate Service”,our business mainly focus on the distribution of electronic components. Line cards we deal with include Microchip,ALPS,ROHM,Xilinx,Pulse,ON,Everlight and Freescale. Main products comprise IC,Modules,Potentiometer,IC Socket,Relay,Connector.Our parts cover such applications as commercial,industrial, and automotives areas.

We are looking forward to setting up business relationship with you and hope to provide you with the best service and solution. Let us make a better world for our industry!



Contact us

Tel: +86-755-8981 8866 Fax: +86-755-8427 6832

Email & Skype: info@chipsmall.com Web: www.chipsmall.com

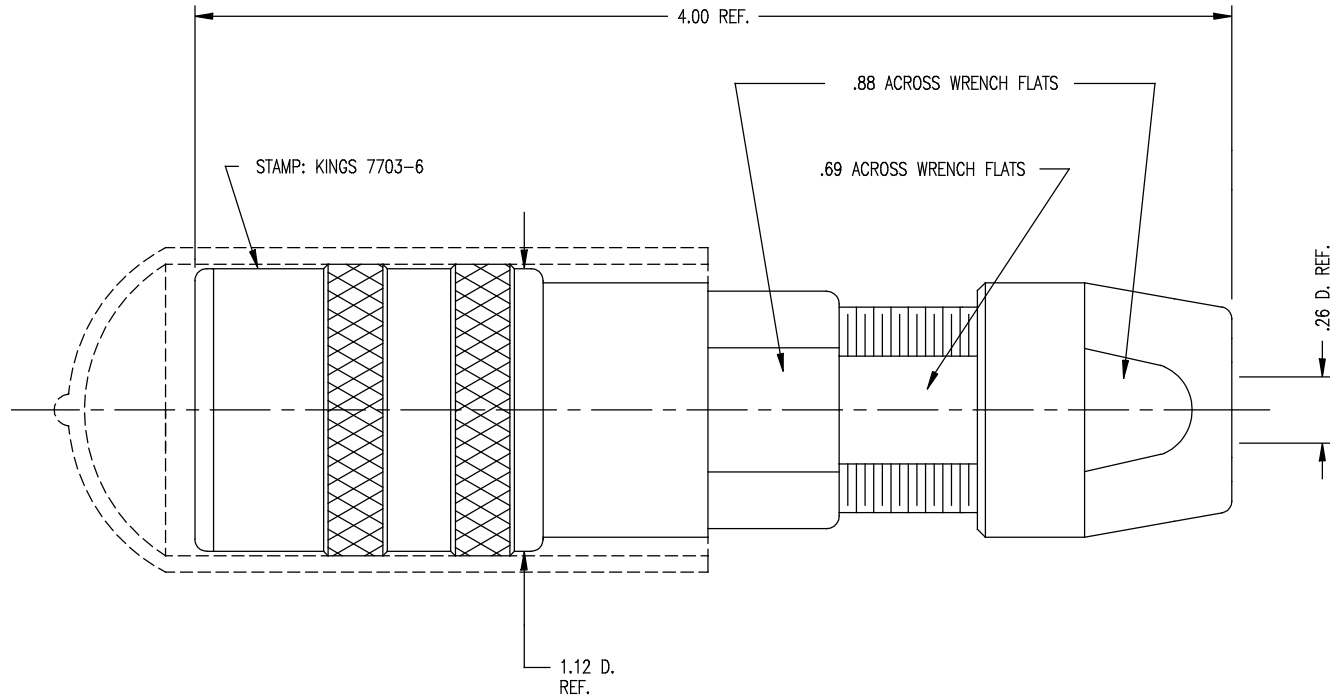
Address: A1208, Overseas Decoration Building, #122 Zhenhua RD., Futian, Shenzhen, China



DASH NO.	M CODE	MADE FROM
----------	--------	-----------

GSD

7703-6



NOTES:

1. FOR USE WITH BELDEN 88232 & COMM SCOPE 8000257 (780 CABLE GROUP).
2. FOR CABLING INSTRUCTIONS SEE KAI-8010.
3. FOR CRIMPING USE DIE SIZE KTH-2002.
4. MATERIALS:
INSULATORS: TEFLON, ASTM-D-4894
GASKETS: SILICONE RUBBER, ZZ-R-765
CAP: VINYL
K-GRIP SLEEVE: COM'L BRONZE, ASTM-B-135
CENTER CONTACT
OUTER CONTACT SPRING } BER. COPPER, ASTM-B-196
INSERT
ALL OTHER METAL PARTS: BRASS, ASTM-B16

5. FINISHES:

- CENTER CONTACT } GOLD PLATE PER MIL-G-45204
OUTER CONTACT SPRING }
NUTS }
COLLET } KINGS TARNISH RESISTANT NICKEL FINISH (TR-5)
BODIES }

6. ELECTRICAL CHARACTERISTICS:

- NOMINAL IMPEDANCE: 75 ~W
FREQUENCY RANGE: DC-500 MHZ
VOLTAGE BREAKDOWN: CENTER CONDUCTOR/INNER GROUND: 1500 VRMS
INNER GROUND/OUTER GROUND: 500 VRMS

REVISIONS

ISSUE	CHANGES
0	ER 37089 KH 08/08/96
1	CN 37238 D KH 02/03/97
2	CN 38024 E HVN 07/06/00

KAM6259

SCALE 2:1

APPROX SURFACE AREA

WAS: E-19092

USED ON

REF:

JACK, TRI-LOC,
SERIAL DIGITAL

DRAWN	KH	DATE	12/01/95
DESIGN	FD	DATE	12/02/95
APPR.	FD	DATE	12/11/95

KINGS
ELECTRONICS CO., INC.
TUCKAHOE, NEW YORK 10707

7703-6

GSD