



Chipsmall Limited consists of a professional team with an average of over 10 year of expertise in the distribution of electronic components. Based in Hongkong, we have already established firm and mutual-benefit business relationships with customers from,Europe,America and south Asia,supplying obsolete and hard-to-find components to meet their specific needs.

With the principle of “Quality Parts,Customers Priority,Honest Operation,and Considerate Service”,our business mainly focus on the distribution of electronic components. Line cards we deal with include Microchip,ALPS,ROHM,Xilinx,Pulse,ON,Everlight and Freescale. Main products comprise IC,Modules,Potentiometer,IC Socket,Relay,Connector.Our parts cover such applications as commercial,industrial, and automotives areas.

We are looking forward to setting up business relationship with you and hope to provide you with the best service and solution. Let us make a better world for our industry!



## Contact us

Tel: +86-755-8981 8866 Fax: +86-755-8427 6832

Email & Skype: [info@chipsmall.com](mailto:info@chipsmall.com) Web: [www.chipsmall.com](http://www.chipsmall.com)

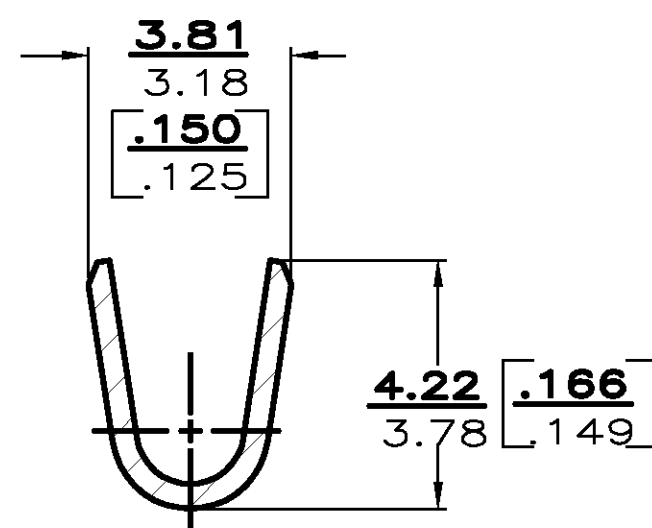
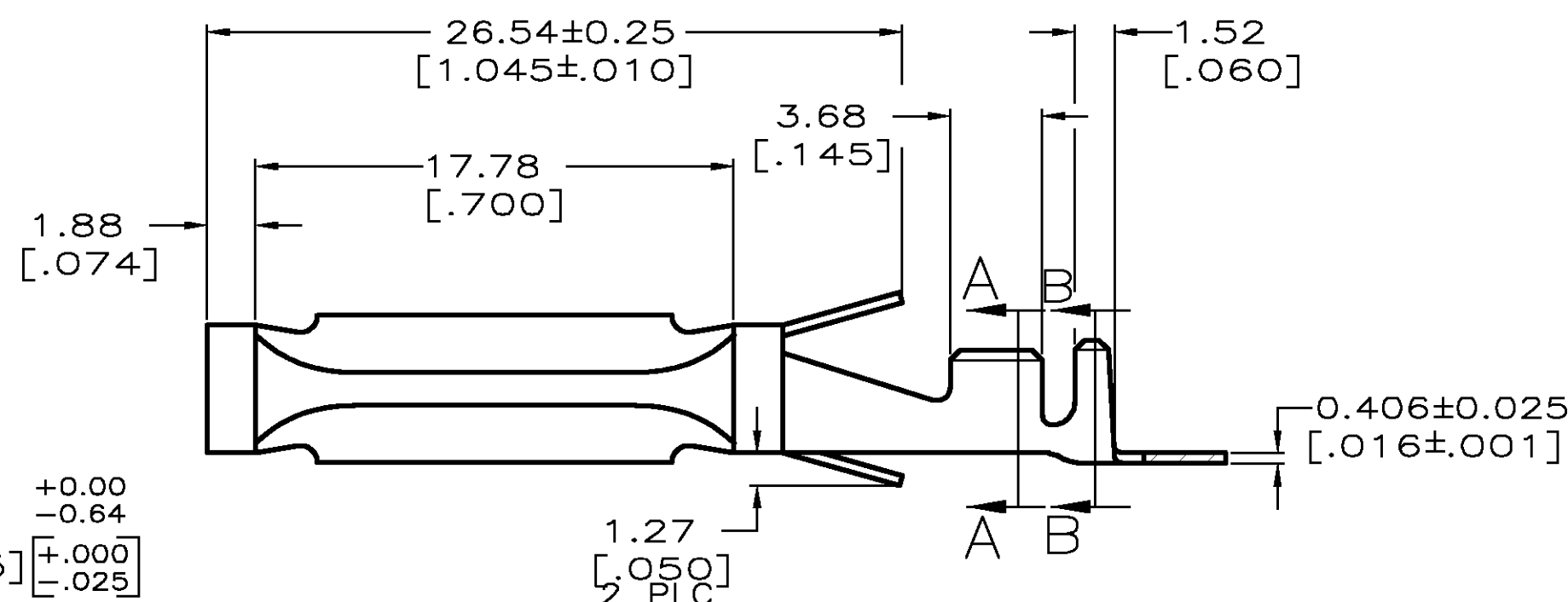
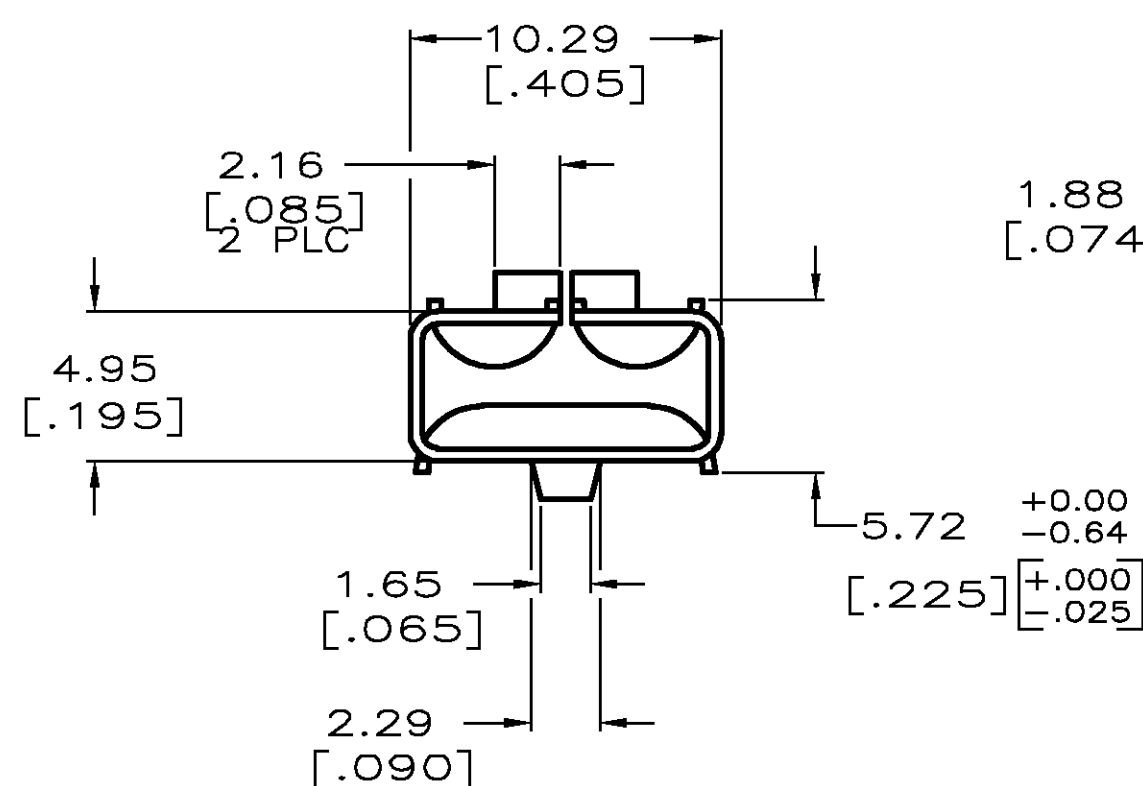
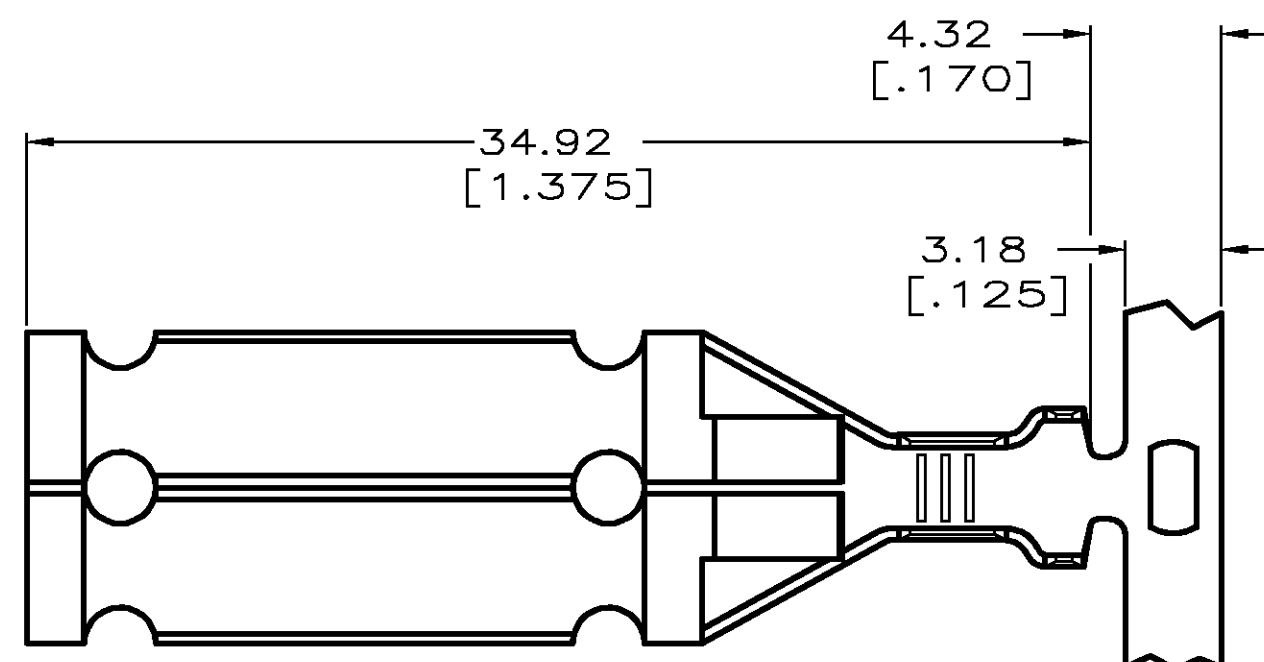
Address: A1208, Overseas Decoration Building, #122 Zhenhua RD., Futian, Shenzhen, China



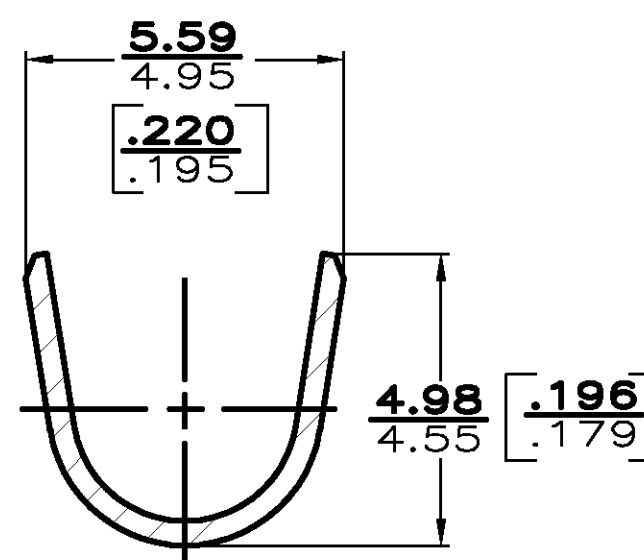
THIS DRAWING IS UNPUBLISHED.  
RELEASED FOR PUBLICATION  
COPYRIGHT BY TYCO ELECTRONICS CORPORATION. ALL RIGHTS RESERVED.

LOC	DIST	REVISIONS			
		P	LTR	DATE	DWN
AF	50	J		18NOV02	MF
REVISED PER 0G3A-0692-02				DD	

- 1 CONTINUOUS STRIP ON REELS.
- 2 WIRE RANGE: 0.8–2.0mm<sup>2</sup> [18–14] AWG.
- 3 INSULATION RANGE: 2.67–3.91 [.105–.154] DIA.
- △ 4 PRELIMINARY – NOT FOR PRODUCTION.



SECTION A-A  
SCALE 10:1



SECTION B-B  
SCALE 10:1

OBSOLETE	COPPER-NICKEL-SILICON ALLOY	770321-3
	BERYLLIUM COPPER	770321-2
	COPPER ALLOY	770321-1
MATERIAL		PART NUMBER
THIS DRAWING IS A CONTROLLED DOCUMENT.		DWN 18NOV2002 MICHAEL S. FEHER CHK 18NOV2002 DONALD F. DECKER APVD 18NOV2002 DONALD F. DECKER
DIMENSIONS: INCHES		PRODUCT SPEC
TOLERANCES UNLESS OTHERWISE SPECIFIED:		APPLICATION SPEC
0 PLC ± -		WEIGHT -
1 PLC ± -		CUSTOMER DRAWING
2 PLC ± 0.25 [.010]		SCALE 4:1
3 PLC ± -		SHEET 1 OF 1
4 PLC ± -		REV J
ANGLES ± -		
FINISH -		
MATERIAL SEE TABLE		SIZE A2 CAGE CODE 00779 DRAWING NO C-770321 RESTRICTED TO -