



Chipsmall Limited consists of a professional team with an average of over 10 year of expertise in the distribution of electronic components. Based in Hongkong, we have already established firm and mutual-benefit business relationships with customers from,Europe,America and south Asia,supplying obsolete and hard-to-find components to meet their specific needs.

With the principle of “Quality Parts,Customers Priority,Honest Operation,and Considerate Service”,our business mainly focus on the distribution of electronic components. Line cards we deal with include Microchip,ALPS,ROHM,Xilinx,Pulse,ON,Everlight and Freescale. Main products comprise IC,Modules,Potentiometer,IC Socket,Relay,Connector.Our parts cover such applications as commercial,industrial, and automotives areas.

We are looking forward to setting up business relationship with you and hope to provide you with the best service and solution. Let us make a better world for our industry!



## Contact us

Tel: +86-755-8981 8866 Fax: +86-755-8427 6832

Email & Skype: [info@chipsmall.com](mailto:info@chipsmall.com) Web: [www.chipsmall.com](http://www.chipsmall.com)

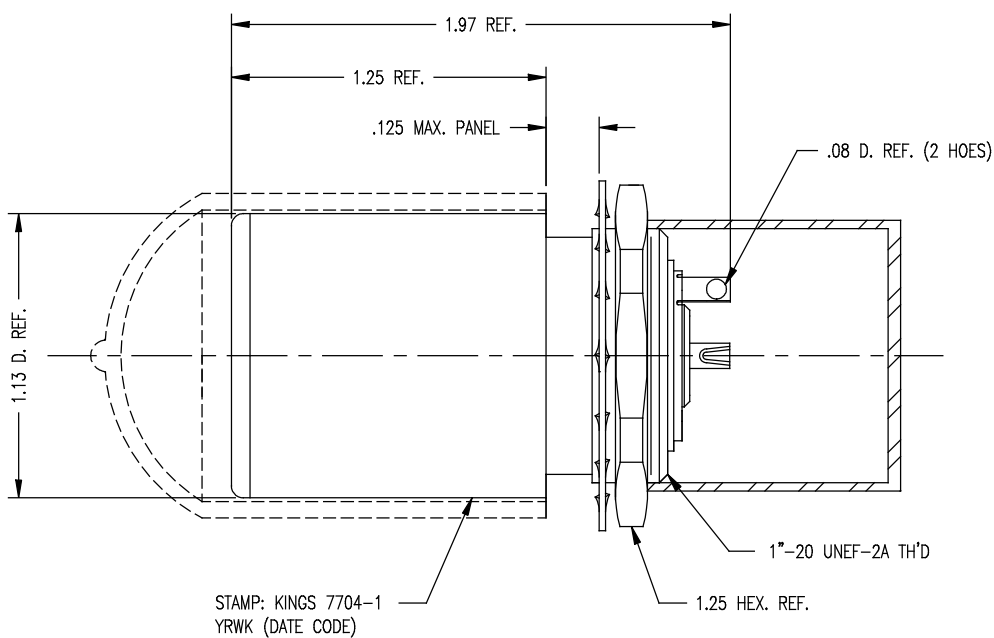
Address: A1208, Overseas Decoration Building, #122 Zhenhua RD., Futian, Shenzhen, China



DASH NO.	M CODE	MADE FROM
----------	--------	-----------

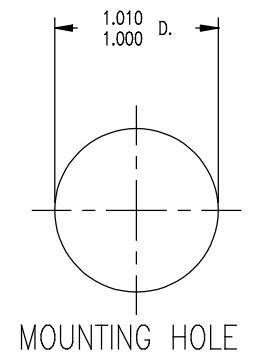
SD

7704-1



NOTES:

1. MATERIALS:  
INSULATORS: TEFLON, ASTM-D-4894  
CAP: VINYL  
CENTER CONTACT }  
OUTER CONTACT SPRING } BER. COP., ASTM-B-196  
INSERT }  
LOCKWASHER: PHOSPHOR BRONZE, ASTM-B-103  
ALL OTHER METAL PARTS: BRASS, ASTM-B16
2. FINISHES:  
OUTER CONTACT SPRING }  
CENTER CONTACT } GOLD PLATE PER MIL-G-45204  
ALL OTHER METAL PARTS: KINGS TARNISH RESISTANT NICKEL FINISH (TR-5)
3. ELECTRICAL CHARACTERISTICS:  
NOMINAL IMPEDANCE: 75 OHMS  
FREQUENCY RANGE: DC-500 MHz  
VOLTAGE BREAKDOWN: CENTER CONDUCTOR/INNER GROUND: 1500 VOLTS RMS  
INNER GROUND/OUTER GROUND: 500 VOLTS RMS



SD

REVISIONS		
ISSUE	CHANGES	
0	ER 35437 KH 04/19/95	
1	CN 36754 E ME 12/22/95	
2	CN 37274 D PG 03/12/97	
3	CN 37336 D PG 04/07/97	
4	CN 37424 C MRM 08/26/97	
5	CN 38122 C BDH 11/07/00	
77041C		
SCALE 2:1		
APPROX SURFACE AREA		
USED ON		
REF: KP-8060-001-000		
RECEPTACLE, BKHD, TRI-LOC SERIAL DIGITAL		
DRAWN	ME	DATE 10/31/95
DESIGN	FD	DATE 10/31/95
APPR.		DATE
<b>KINGS</b> ELECTRONICS CO., INC. ROCK HILL, SOUTH CAROLINA 29730		
7704-1		