



Chipsmall Limited consists of a professional team with an average of over 10 year of expertise in the distribution of electronic components. Based in Hongkong, we have already established firm and mutual-benefit business relationships with customers from,Europe,America and south Asia,supplying obsolete and hard-to-find components to meet their specific needs.

With the principle of “Quality Parts,Customers Priority,Honest Operation,and Considerate Service”,our business mainly focus on the distribution of electronic components. Line cards we deal with include Microchip,ALPS,ROHM,Xilinx,Pulse,ON,Everlight and Freescale. Main products comprise IC,Modules,Potentiometer,IC Socket,Relay,Connector.Our parts cover such applications as commercial,industrial, and automotives areas.

We are looking forward to setting up business relationship with you and hope to provide you with the best service and solution. Let us make a better world for our industry!



Contact us

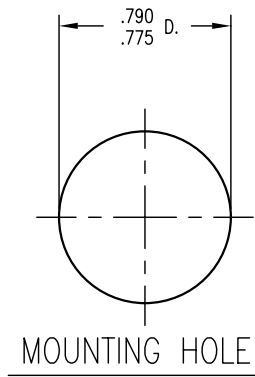
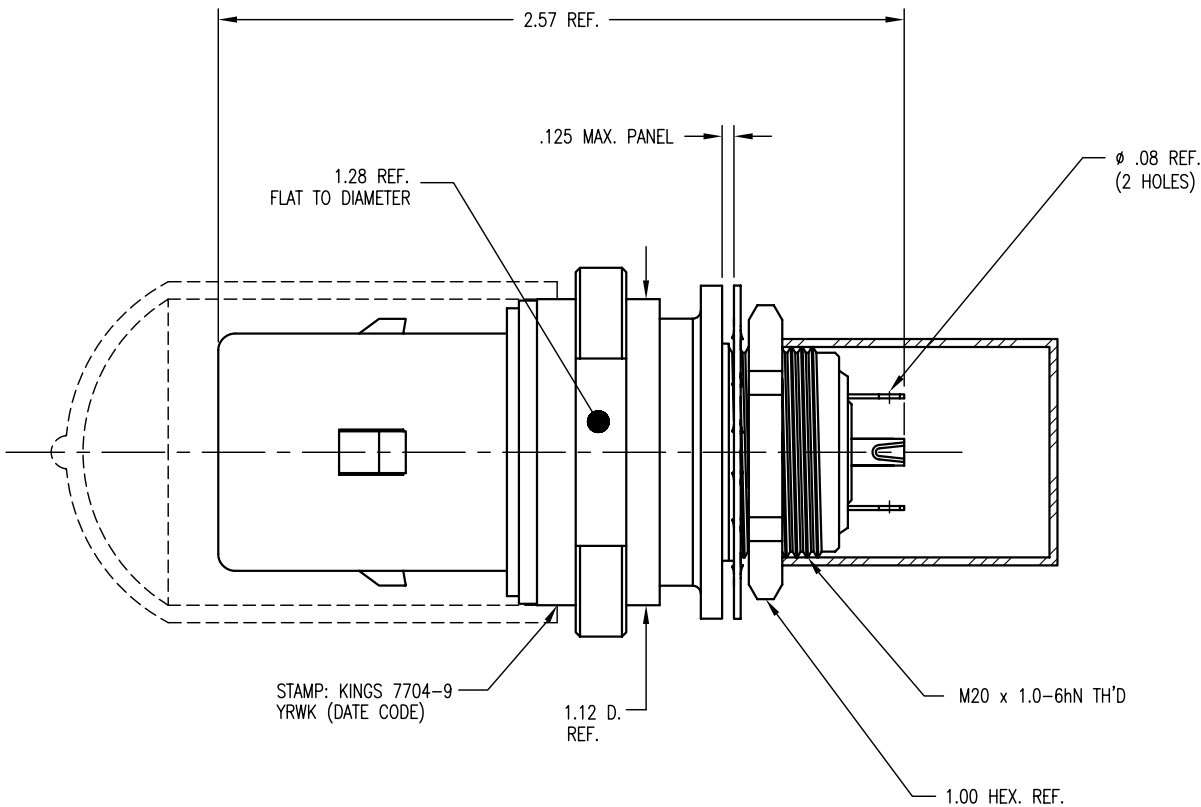
Tel: +86-755-8981 8866 Fax: +86-755-8427 6832

Email & Skype: info@chipsmall.com Web: www.chipsmall.com

Address: A1208, Overseas Decoration Building, #122 Zhenhua RD., Futian, Shenzhen, China



DASH NO.	M CODE	MADE FROM
----------	--------	-----------



NOTES:

1. MATERIALS:

CAPS: VINYL
 INSULATORS: TEFLON, ASTM-D-4894
 GASKETS: SILICONE RUBBER, ZZ-R-765
 CONDUCTIVE GASKET: CONSIL C 87-10004, 60-70 DUROMETER
 LOCKWASHER }
 RETAINING RING } SPRING STEEL, PER ASTM A682
 E-RING }
 OUTER CONTACT: PHOSPHOR BRONZE, ASTM-B-103
 BODY: BER. COPPER, ASTM-B-196
 ALL OTHER METAL PARTS: BRASS, ASTM-B16

2. FINISHES:

CENTER CONTACTS: GOLD PLATE PER MIL-G-45204
 ALL OTHER METAL PARTS: KINGS TARNISH RESISTANT NICKEL FINISH (TR-5)

3. ELECTRICAL CHARACTERISTICS:

FREQUENCY RANGE: DC-500 MHZ
 NOMINAL IMPEDANCE: 75 ~W
 VOLTAGE BREAKDOWN: CENTER CONDUCTOR/INNER GROUND: 1500 VOLTS RMS
 INNER GROUND/OUTER GROUND: 500 VOLTS RMS

SD7704-9 (SHEET 1 OF 3)	REVISIONS	
	ISSUE	CHANGES
	0	ER 39004 JPK 01/28/04
	B	REVISED PER ER27361 GGR 09/13/10
7704-9S		
CUSTOMER SALES DRAWING		
SCALE 2:1		
APPROX SURFACE AREA		
USED ON		
REF: EQR 591 & E-20167		
RCPT, BKHD, TRI-LOC SERIAL DIGITAL		
DRAWN J. KENNEDY	DATE 02/18/03	
DESIGN J. KENNEDY	DATE 02/18/03	
APPR.	DATE	
 by WINCHESTER ELECTRONICS		Winchester Electronics 62 Barnes Industrial Road North Wallingford, CT 06492
SD7704-9 (SHEET 1 OF 3)		