



Chipsmall Limited consists of a professional team with an average of over 10 year of expertise in the distribution of electronic components. Based in Hongkong, we have already established firm and mutual-benefit business relationships with customers from,Europe,America and south Asia,supplying obsolete and hard-to-find components to meet their specific needs.

With the principle of “Quality Parts,Customers Priority,Honest Operation,and Considerate Service”,our business mainly focus on the distribution of electronic components. Line cards we deal with include Microchip,ALPS,ROHM,Xilinx,Pulse,ON,Everlight and Freescale. Main products comprise IC,Modules,Potentiometer,IC Socket,Relay,Connector.Our parts cover such applications as commercial,industrial, and automotives areas.

We are looking forward to setting up business relationship with you and hope to provide you with the best service and solution. Let us make a better world for our industry!



Contact us

Tel: +86-755-8981 8866 Fax: +86-755-8427 6832

Email & Skype: info@chipsmall.com Web: www.chipsmall.com

Address: A1208, Overseas Decoration Building, #122 Zhenhua RD., Futian, Shenzhen, China



D

C

B

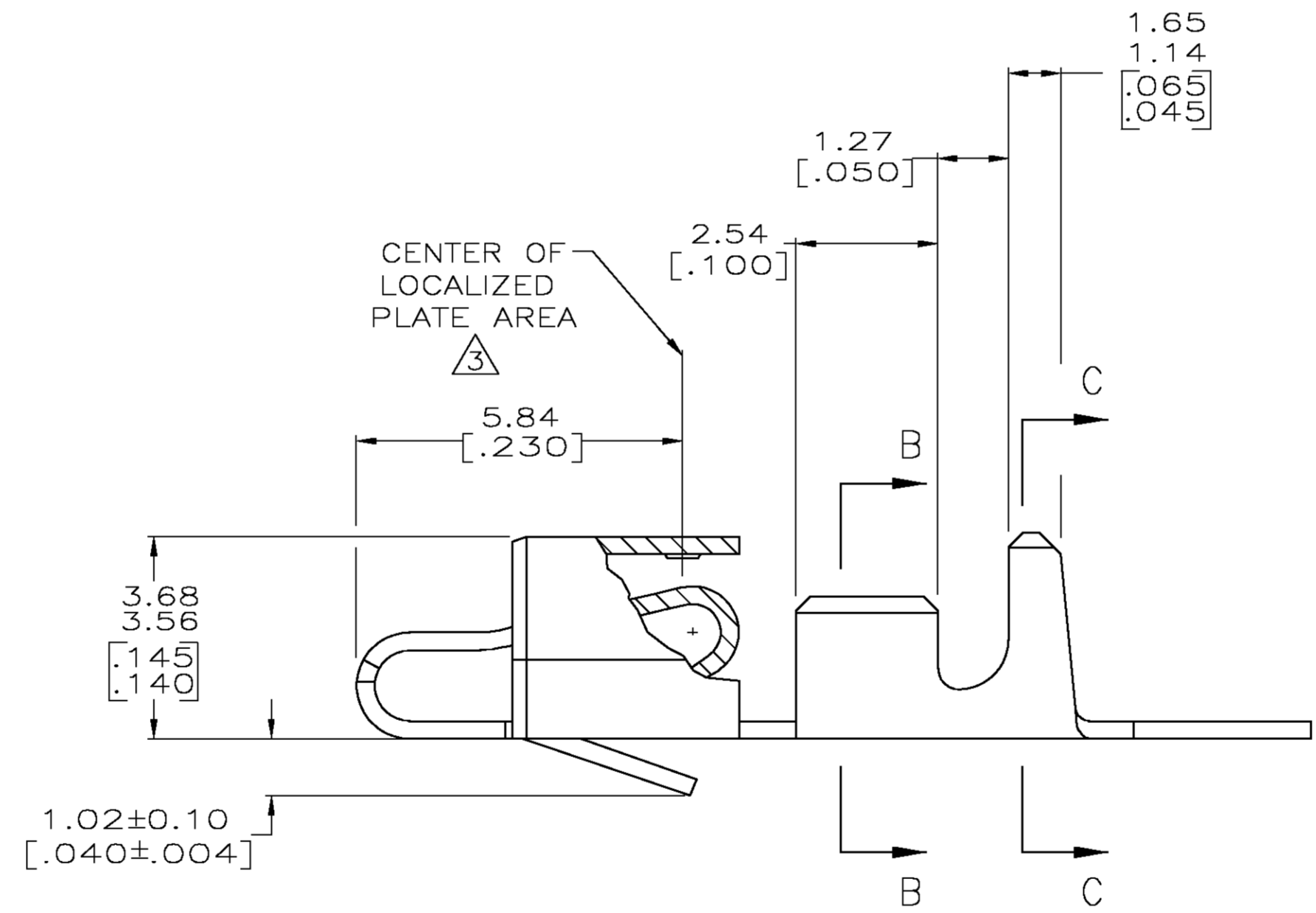
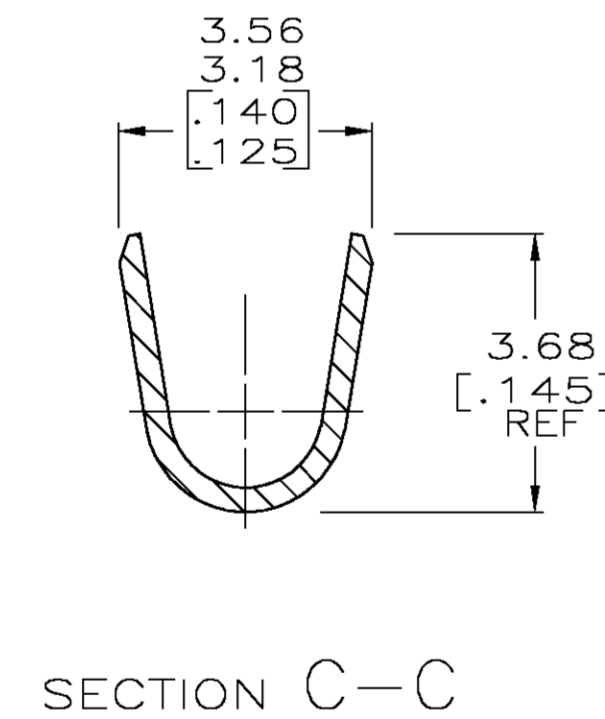
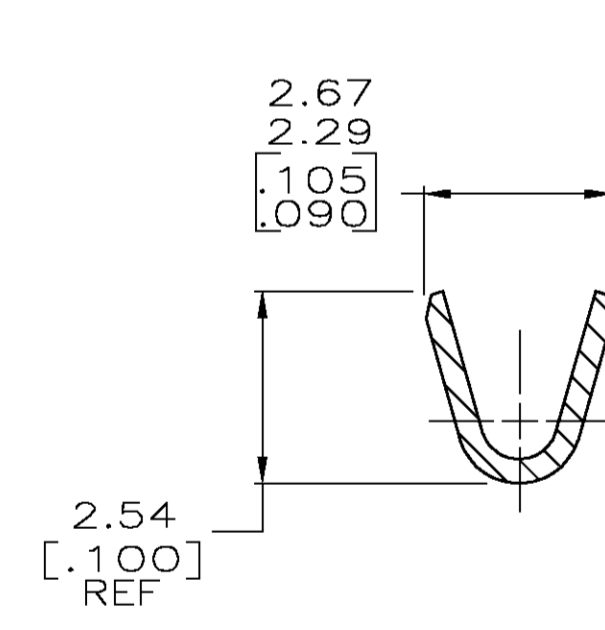
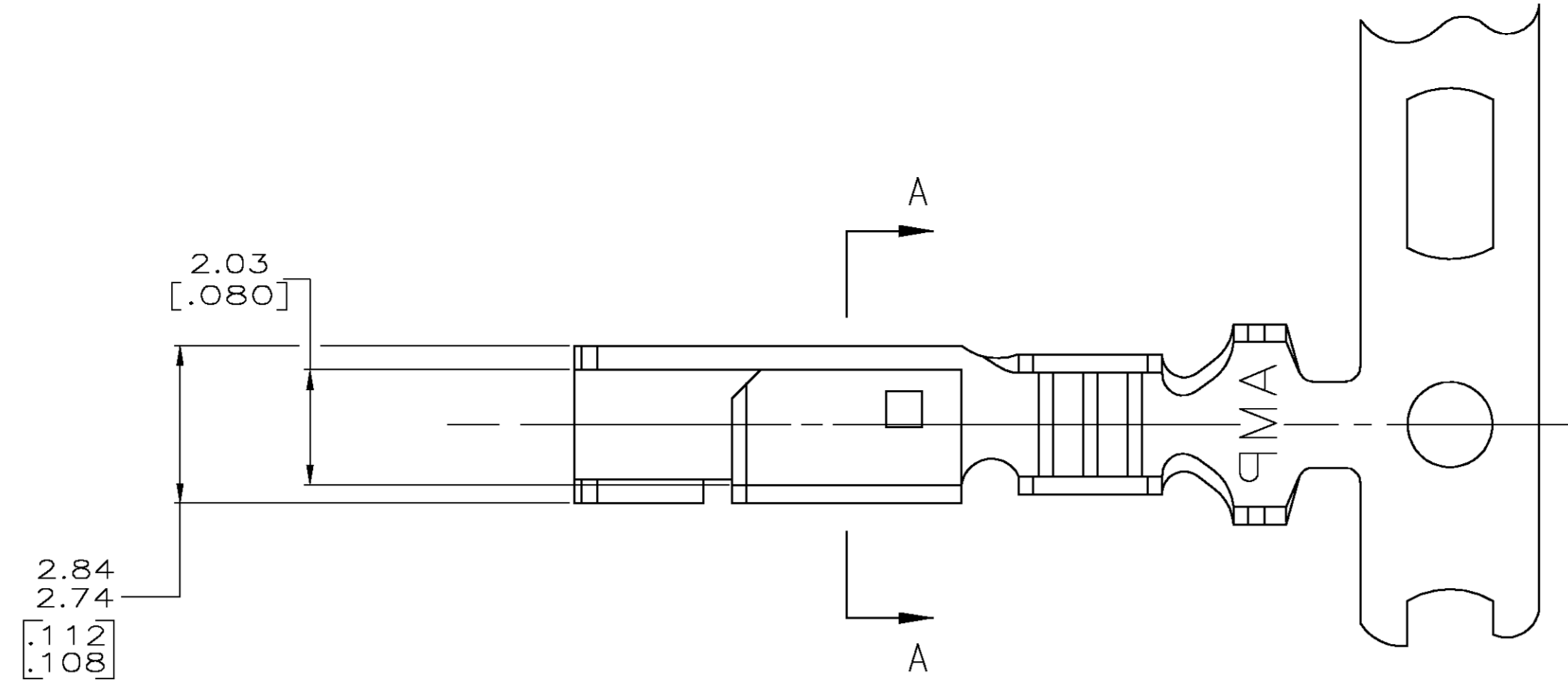
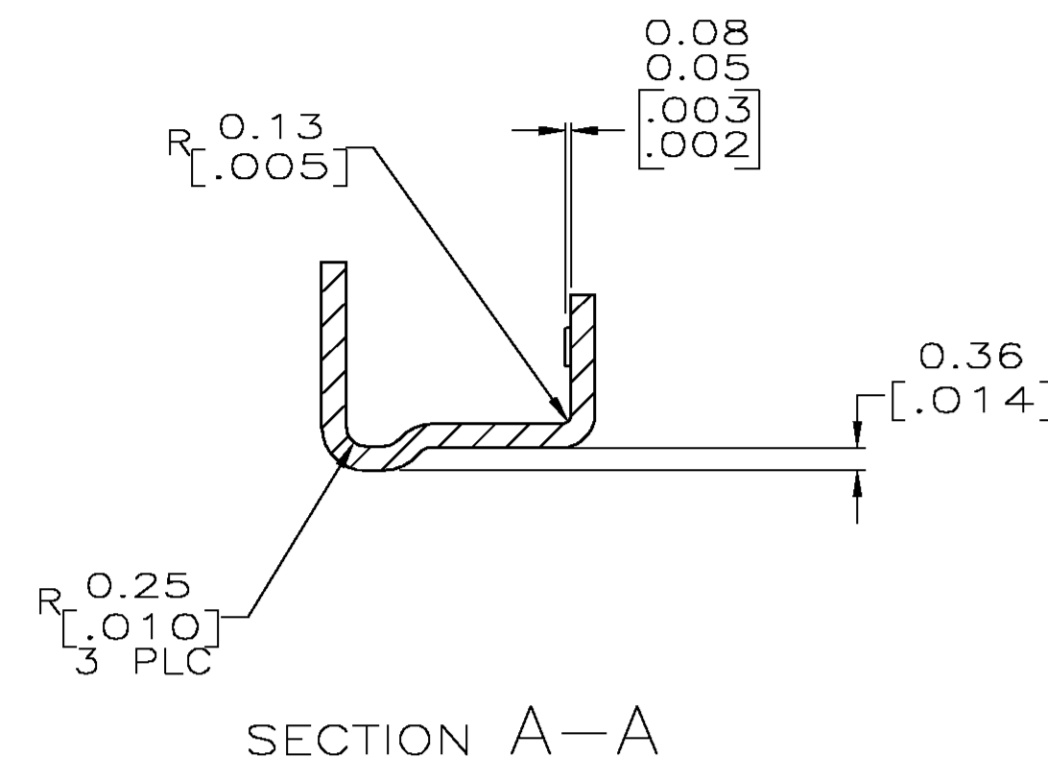
A

D

C

B

A



1. INSULATION RANGE: 1.09—2.79 [.043—.110]
WIRE RANGE: 0.2—0.9 mm² (24—18) AWG.
2. 0.00203 [.000080] MIN BRIGHT TIN—LEAD OVER
0.00127 [.000050] MIN NICKEL.
3. 0.00076 [.000030] MIN THICK GOLD STRIPES IN
LOCALIZED PLATE AREA ON BEAM AND DIMPLE OVER
0.00127 [.000050] MIN THICK NICKEL OVER ENTIRE
CONTACT.
4. DIMENSIONS IN BRACKETS ARE IN INCHES.
5. 0.00203 [.000080] MIN BRIGHT TIN OVER
0.00127 [.000050] MIN NICKEL.



5	3-770476-1
3	770476-2
2	770476-1
FINISH	PART NO.

THIS DRAWING IS A CONTROLLED DOCUMENT.		DWN S. CARPENTER	21AUG2003	Tyco Electronics Corporation Harrisburg, PA 17105	
DIMENSIONS: INCHES		D/K J. ELLIS	21AUG2003	NAME RECEPTACLE, SL-156	
		TOLERANCES UNLESS OTHERWISE SPECIFIED:		APVD J. ELLIS	
		0 PLC ± 1 PLC ± 2 PLC ± 3 PLC ± 0.13 [.005] 4 PLC ± ANGLES ±		PRODUCT SPEC	
MATERIAL 0.318 [.0125] PH BRZ		FINISH SEE TABLE		APPLICATION SPEC	
WEIGHT		CUSTOMER DRAWING		RESTRICTED TO	
SCALE 10:1		SHEET 1 OF 1		REV H	