



Chipsmall Limited consists of a professional team with an average of over 10 year of expertise in the distribution of electronic components. Based in Hongkong, we have already established firm and mutual-benefit business relationships with customers from,Europe,America and south Asia,supplying obsolete and hard-to-find components to meet their specific needs.

With the principle of "Quality Parts,Customers Priority,Honest Operation,and Considerate Service",our business mainly focus on the distribution of electronic components. Line cards we deal with include Microchip,ALPS,ROHM,Xilinx,Pulse,ON,Everlight and Freescale. Main products comprise IC,Modules,Potentiometer,IC Socket,Relay,Connector.Our parts cover such applications as commercial,industrial, and automotives areas.

We are looking forward to setting up business relationship with you and hope to provide you with the best service and solution. Let us make a better world for our industry!



Contact us

Tel: +86-755-8981 8866 Fax: +86-755-8427 6832

Email & Skype: info@chipsmall.com Web: www.chipsmall.com

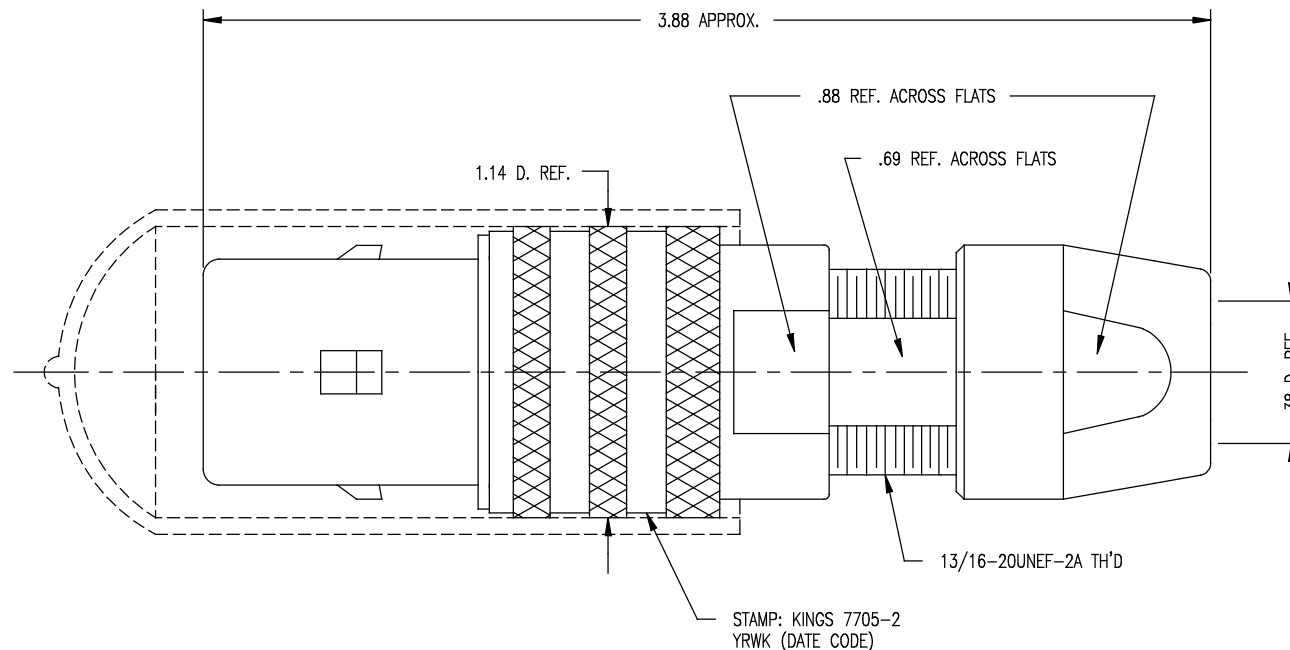
Address: A1208, Overseas Decoration Building, #122 Zhenhua RD., Futian, Shenzhen, China



DASH NO.	M CODE	MADE FROM
----------	--------	-----------

GSD

7705-2



NOTES:

- FOR USE WITH 730 CABLE GROUP.
- FOR CABLING INSTRUCTIONS SEE KAI-8010.
- FOR CABLE TRIMMING USE KTJ-303 AND KTD-303.
- FOR CRIMPING USE DIE KTH-1000 AND KTH-2002.
- MATERIALS:
INSULATORS: TEFLON, ASTM-D-4894
CONDUCTIVE GASKET: CONSIL C 87-10004
GASKETS: SILICONE RUBBER, ZZ-R-765
K-GRIP SLEEVE: COM. BRONZE TUBE, ASTM-B-135
OUTER CONTACT: PHOSPHOR BRONZE, ASTM-B-103
FINGER BODY: BER. COPPER, ASTM-B-196
CENTER CONTACT TIP: DELRIN
CAP: VINYL
ALL OTHER METAL PARTS: BRASS, ASTM-B16

- FINISHES:
CENTER CONTACT: HARD GOLD PLATE, PER MIL-G-45204
NUT
COLLET
OUTER BODIES
ALL OTHER METAL PARTS: SILVER PLATE, PER QQ-S-365
KINGS TARNISH RESISTANT NICKEL FINISH (TR-5)
- ELECTRICAL CHARACTERISTICS:
NOMINAL IMPEDANCE: 75 OHMS
FREQUENCY RANGE: DC-500 MHZ
VOLTAGE BREAKDOWN: CENTER CONDUCTOR/INNER GROUND: 1500 VRMS
INNER GROUND/OUTER GROUND: 500 VRMS

REVISIONS		
ISSUE	CHANGES	
0	ER 35415 KH 05/06/95	
1	CN 37763 C HVN 01/19/99	
2	CN 38123 C BDH 11/08/00	
3	CN 39531 C AM 07/12/06	
4	CN 39547 E AM 07/26/06	
SCALE 2:1		
APPROX SURFACE AREA		
USED ON		
REF: KP-8010-730-400		
PLUG, TRI-LOC (SERIAL DIGITAL)		
DRAWN	KH	DATE 04/06/95
DESIGN	DW	DATE 04/07/95
APPR.		DATE
KINGS ELECTRONICS CO., INC. ROCK HILL, SOUTH CAROLINA 29730		
7705-2		

GSD