



Chipsmall Limited consists of a professional team with an average of over 10 year of expertise in the distribution of electronic components. Based in Hongkong, we have already established firm and mutual-benefit business relationships with customers from,Europe,America and south Asia,supplying obsolete and hard-to-find components to meet their specific needs.

With the principle of “Quality Parts,Customers Priority,Honest Operation,and Considerate Service”,our business mainly focus on the distribution of electronic components. Line cards we deal with include Microchip,ALPS,ROHM,Xilinx,Pulse,ON,Everlight and Freescale. Main products comprise IC,Modules,Potentiometer,IC Socket,Relay,Connector.Our parts cover such applications as commercial,industrial, and automotives areas.

We are looking forward to setting up business relationship with you and hope to provide you with the best service and solution. Let us make a better world for our industry!



Contact us

Tel: +86-755-8981 8866 Fax: +86-755-8427 6832

Email & Skype: info@chipsmall.com Web: www.chipsmall.com

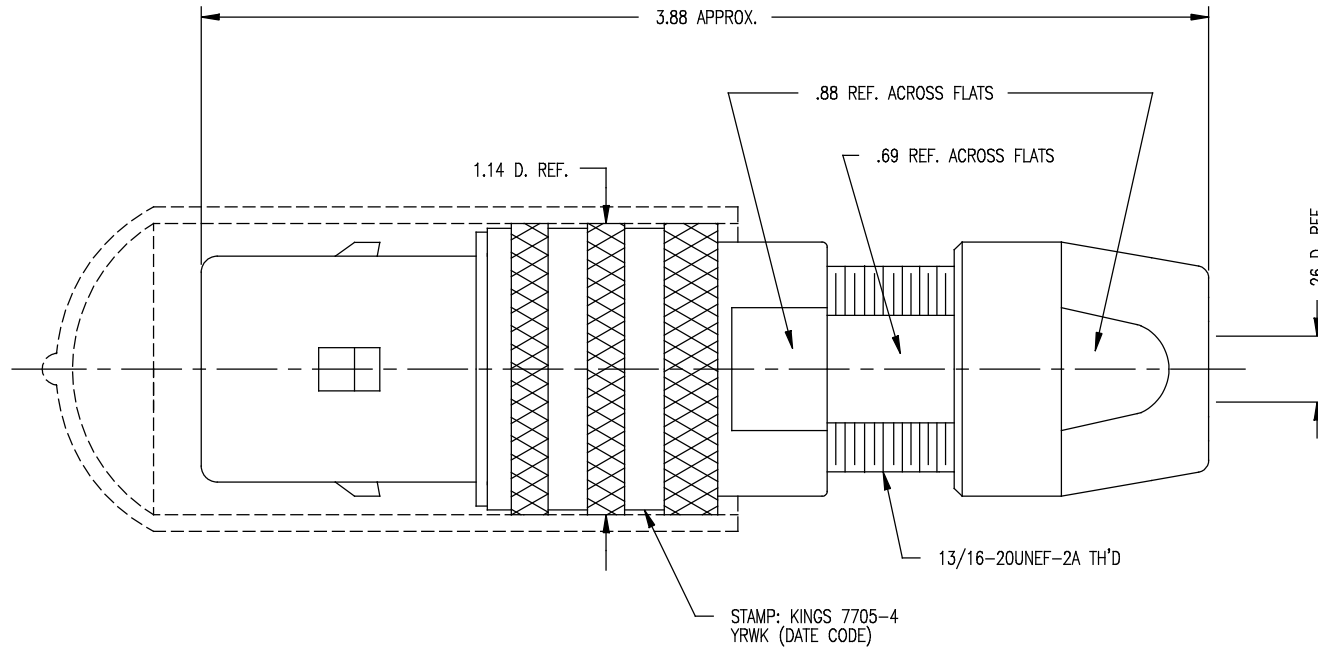
Address: A1208, Overseas Decoration Building, #122 Zhenhua RD., Futian, Shenzhen, China



| | | |
|----------|--------|-----------|
| DASH NO. | M CODE | MADE FROM |
|----------|--------|-----------|

GSD

7705-4



NOTES:

1. FOR USE WITH BELDEN 88232 & COMM SCOPE 8000257 (780 CABLE GROUP).
2. FOR CABLING INSTRUCTIONS SEE KAI-8010.
3. FOR CRIMPING USE DIE KTH-2002.
4. MATERIALS:
 INSULATORS: TEFLON, ASTM-D-4894
 CONDUCTIVE GASKET: CONSIL C 87-10004
 GASKETS: SILICONE RUBBER, ZZ-R-765
 K-GRIP SLEEVE: COM. BRONZE TUBE, ASTM-B-135
 OUTER CONTACT: PHOSPHOR BRONZE, ASTM-B-103
 FINGER BODY: BER. COPPER, ASTM-B-196
 CENTER CONTACT TIP: DELRIN
 CAP: VINYL
 ALL OTHER METAL PARTS: BRASS, ASTM-B16

5. FINISHES:
 CENTER CONTACT: HARD GOLD PLATE, PER MIL-G-45204
 NUT } KINGS TARNISH RESISTANT NICKEL FINISH (TR-5)
 COLLET }
 OUTER BODIES }
 ALL OTHER METAL PARTS: SILVER PLATE, PER QQ-S-365
6. ELECTRICAL CHARACTERISTICS:
 NOMINAL IMPEDANCE: 75 OHMS
 FREQUENCY RANGE: DC-500 MHZ
 VOLTAGE BREAKDOWN: CENTER CONDUCTOR/INNER GROUND: 1500 VRMS
 INNER GROUND/OUTER GROUND: 500 VRMS

REVISIONS

| ISSUE | CHANGES |
|-------|----------------------------|
| 0 | ER 37088 KH 08/07/96 |
| 1 | CN 38024 E HVN 07/06/00 |
| 2 | CN 38122 C BDH 11/08/00 |

KAM6260

SCALE 2:1

APPROX SURFACE AREA

WAS: E-19091

USED ON

REF:

PLUG, TRI-LOC
(SERIAL DIGITAL)

| | | | |
|--------|----|------|----------|
| DRAWN | KH | DATE | 12/01/95 |
| DESIGN | FD | DATE | 12/02/95 |
| APPR. | FD | DATE | 12/11/95 |

KINGS

ELECTRONICS CO., INC.
ROCK HILL, SOUTH CAROLINA 29730

7705-4

GSD