



Chipsmall Limited consists of a professional team with an average of over 10 year of expertise in the distribution of electronic components. Based in Hongkong, we have already established firm and mutual-benefit business relationships with customers from,Europe,America and south Asia,supplying obsolete and hard-to-find components to meet their specific needs.

With the principle of “Quality Parts,Customers Priority,Honest Operation,and Considerate Service”,our business mainly focus on the distribution of electronic components. Line cards we deal with include Microchip,ALPS,ROHM,Xilinx,Pulse,ON,Everlight and Freescale. Main products comprise IC,Modules,Potentiometer,IC Socket,Relay,Connector.Our parts cover such applications as commercial,industrial, and automotives areas.

We are looking forward to setting up business relationship with you and hope to provide you with the best service and solution. Let us make a better world for our industry!



## Contact us

Tel: +86-755-8981 8866 Fax: +86-755-8427 6832

Email & Skype: [info@chipsmall.com](mailto:info@chipsmall.com) Web: [www.chipsmall.com](http://www.chipsmall.com)

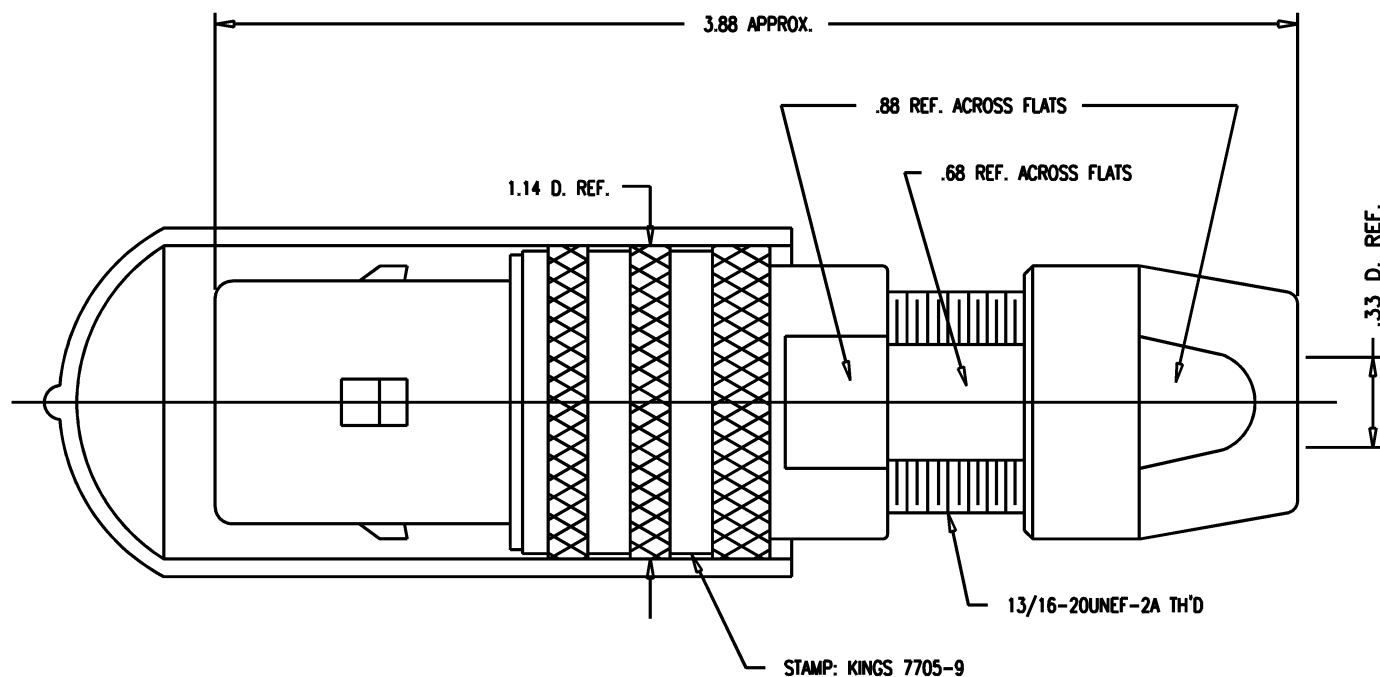
Address: A1208, Overseas Decoration Building, #122 Zhenhua RD., Futian, Shenzhen, China



DASH NO.	M CODE	MADE FROM
----------	--------	-----------

# GSD

7705-9



#### NOTES:

1. FOR USE WITH 760 CABLE GROUP.
2. FOR CABLING INSTRUCTIONS SEE KAI-8010.
3. FOR CRIMPING USE KTH-1000 AND KTH-2002.
4. MATERIALS:  
 INSULATORS: TEFLON, ASTM-D-4894  
 CONDUCTIVE GASKET: CONSIL C 87-10004  
 GASKETS: SILICONE RUBBER, ZZ-R-765  
 K-GRIP SLEEVE: COM. BRONZE TUBE, ASTM-B-135  
 OUTER CONTACT: PHOSPHOR BRONZE, ASTM-B-103  
 FINGER BODY: BER. COPPER, ASTM-B-196  
 CENTER CONTACT TIP: DELRIN  
 CAP: VINYL  
 ALL OTHER METAL PARTS: BRASS, ASTM-B16

5. FINISHES:  
 CENTER CONTACT: HARD GOLD PLATE, PER MIL-G-45204  
 NUT  
 COLLET  
 OUTER BODIES } KINGS TARNISH RESISTANT NICKEL FINISH (TR-5)  
 ALL OTHER METAL PARTS: SILVER PLATE, PER QQ-S-365
6. ELECTRICAL CHARACTERISTICS:  
 NOMINAL IMPEDANCE: 75 OHMS  
 FREQUENCY RANGE: DC-500 MHZ  
 VOLTAGE BREAKDOWN: CENTER CONDUCTOR/INNER GROUND: 1500 VRMS  
 INNER GROUND/OUTER GROUND: 500 VRMS

#### REVISIONS

ISSUE	CHANGES
0	ER 37272 KH 02/27/97
1	CN 39576 E AM 08/14/06

SCALE 2:1

APPROX SURFACE AREA

USED ON

REF: KP-8010-760-400

PLUG, TRI-LOC  
(SERIAL DIGITAL)

DRAWN	KH	DATE	02/27/97
DESIGN	LI	DATE	02/27/97
APPR.	FH	DATE	02/27/97

**KINGS**  
ELECTRONICS CO., INC.  
ROCK HILL, SOUTH CAROLINA 29730

7705-9

# GSD