



Chipsmall Limited consists of a professional team with an average of over 10 year of expertise in the distribution of electronic components. Based in Hongkong, we have already established firm and mutual-benefit business relationships with customers from,Europe,America and south Asia,supplying obsolete and hard-to-find components to meet their specific needs.

With the principle of “Quality Parts,Customers Priority,Honest Operation,and Considerate Service”,our business mainly focus on the distribution of electronic components. Line cards we deal with include Microchip,ALPS,ROHM,Xilinx,Pulse,ON,Everlight and Freescale. Main products comprise IC,Modules,Potentiometer,IC Socket,Relay,Connector.Our parts cover such applications as commercial,industrial, and automotives areas.

We are looking forward to setting up business relationship with you and hope to provide you with the best service and solution. Let us make a better world for our industry!



## Contact us

Tel: +86-755-8981 8866 Fax: +86-755-8427 6832

Email & Skype: [info@chipsmall.com](mailto:info@chipsmall.com) Web: [www.chipsmall.com](http://www.chipsmall.com)

Address: A1208, Overseas Decoration Building, #122 Zhenhua RD., Futian, Shenzhen, China



LOC	DIST	REVISIONS				
		P	LTR	DESCRIPTION	DATE	DWN   APVD
CM	0	D		REVISED PER ECO-06-006795	17MAY06	KW   JE

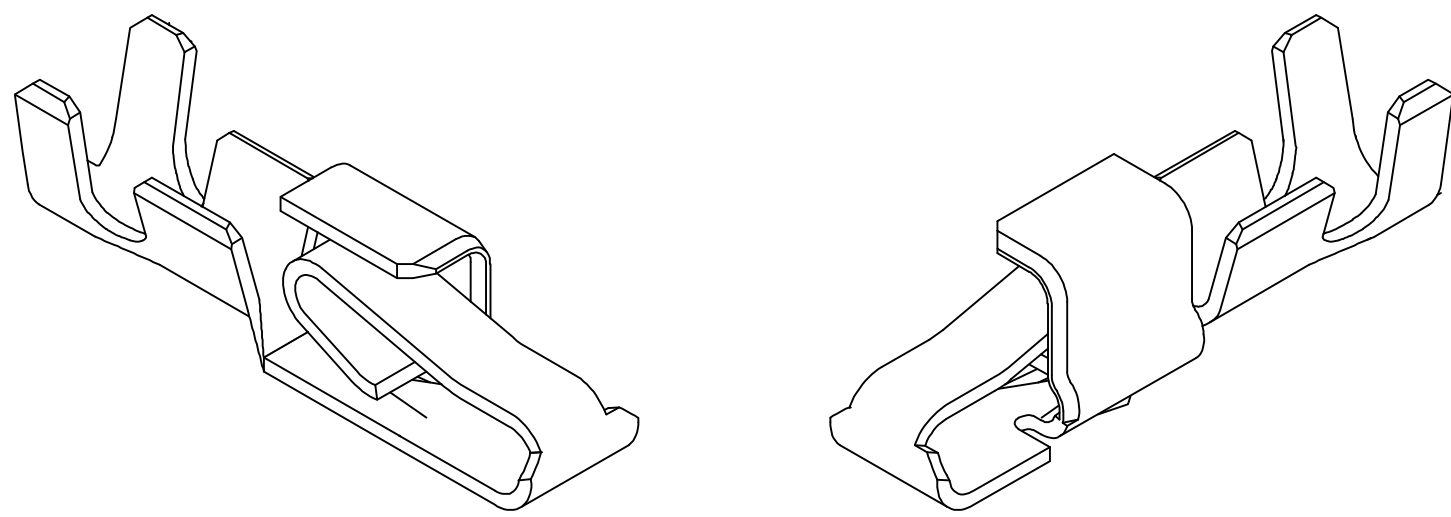
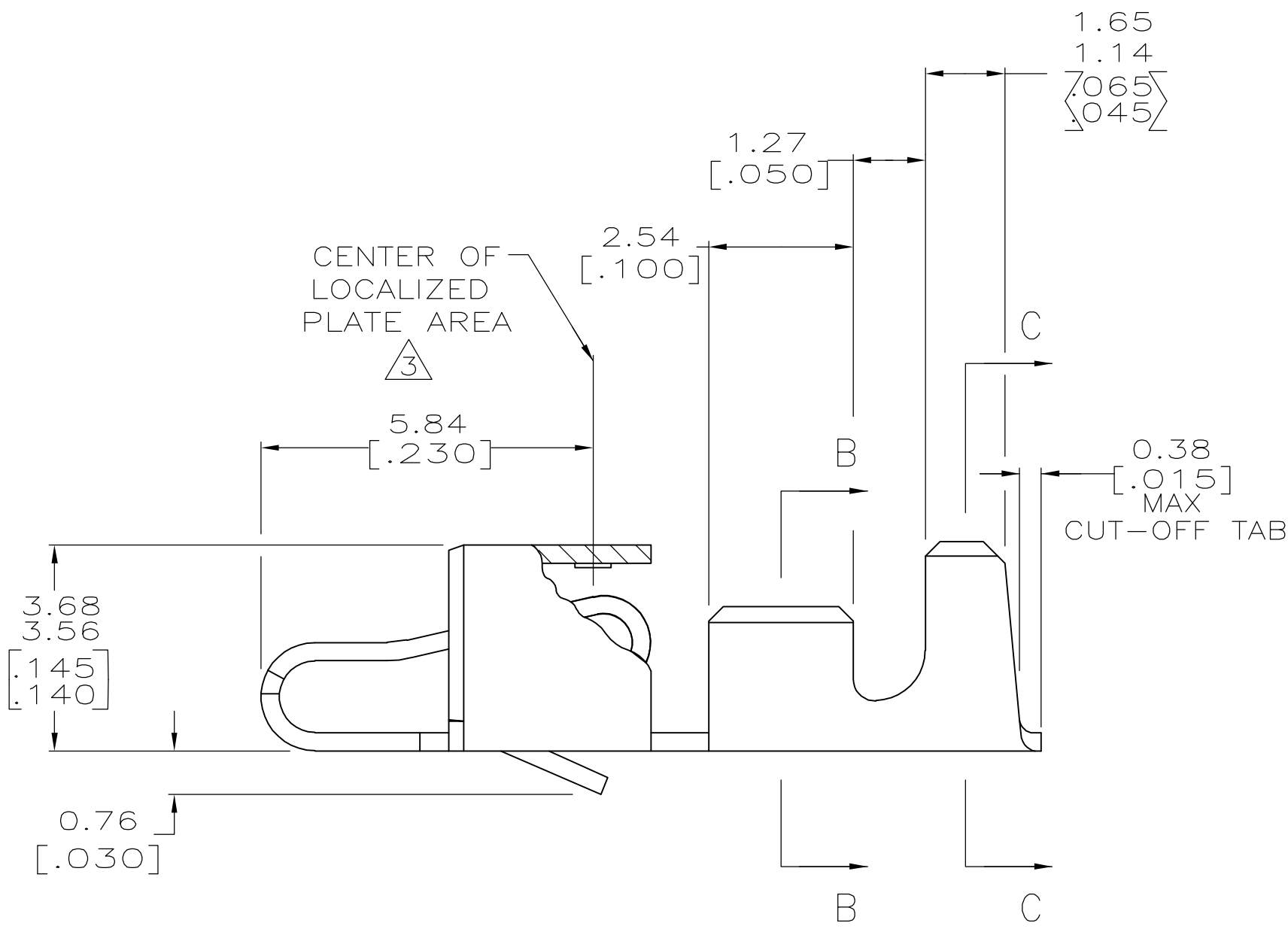
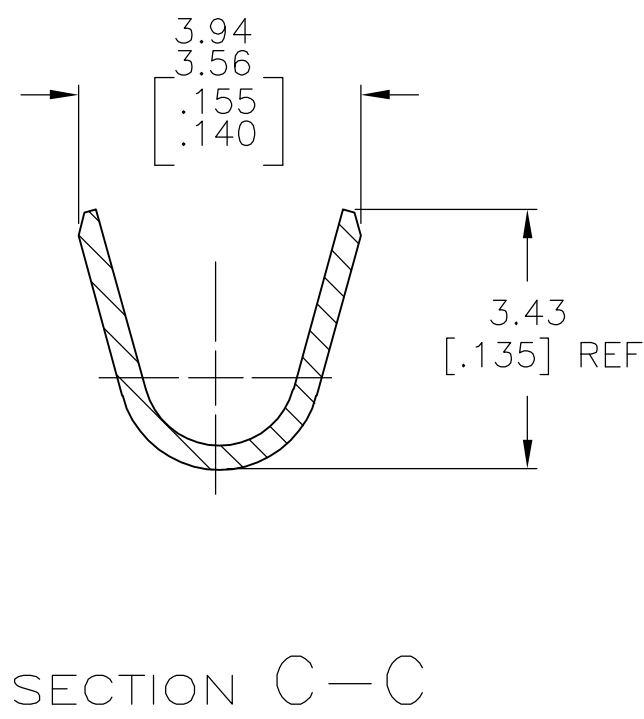
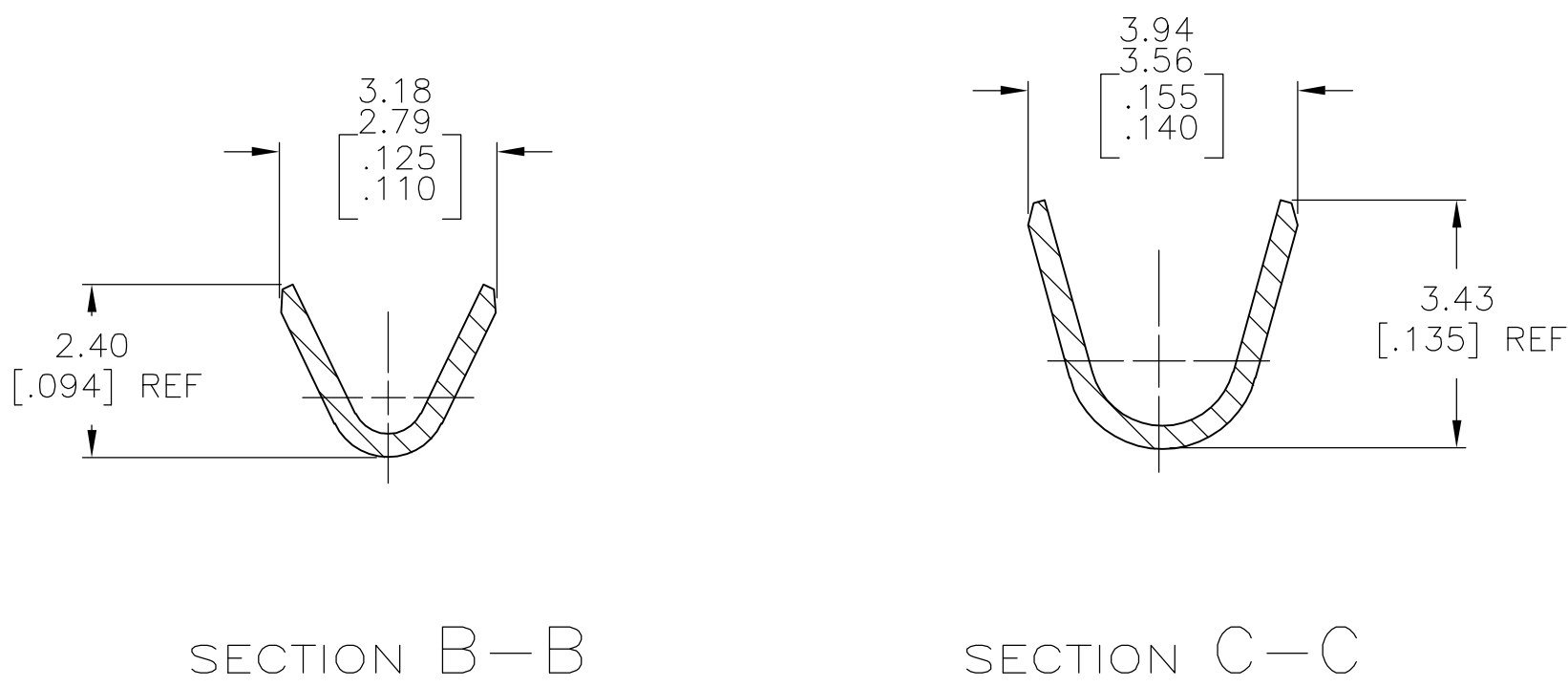
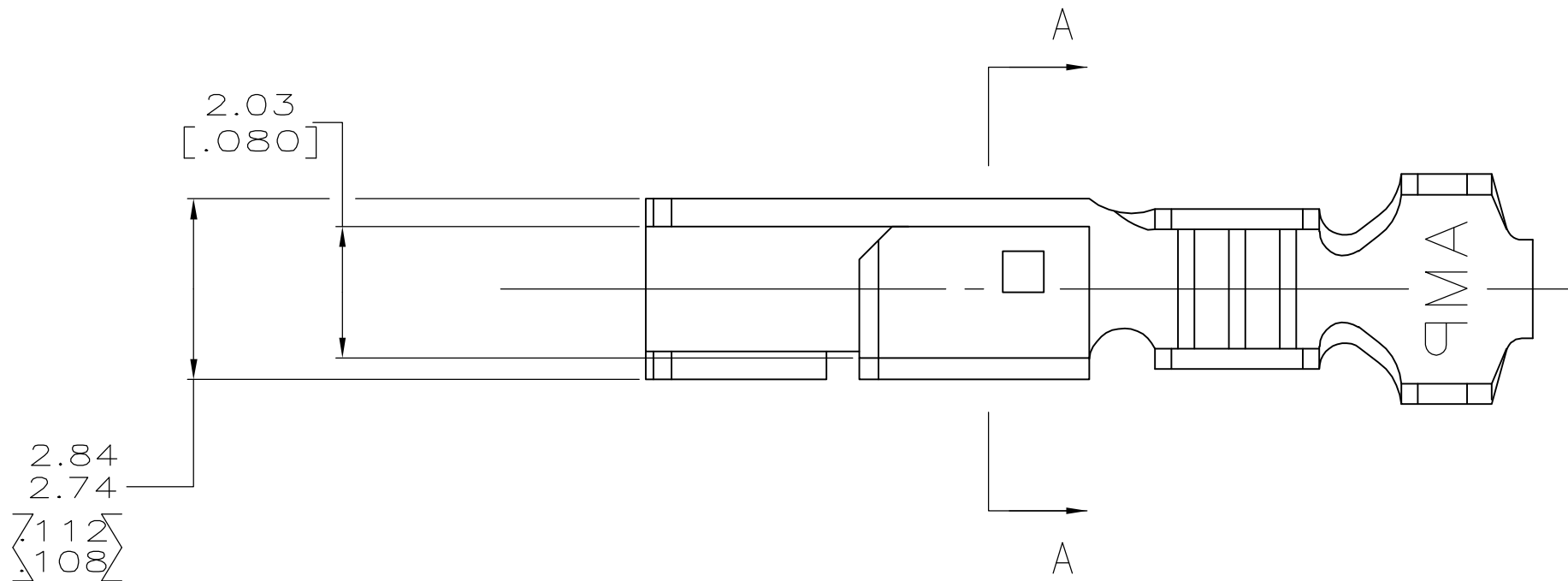
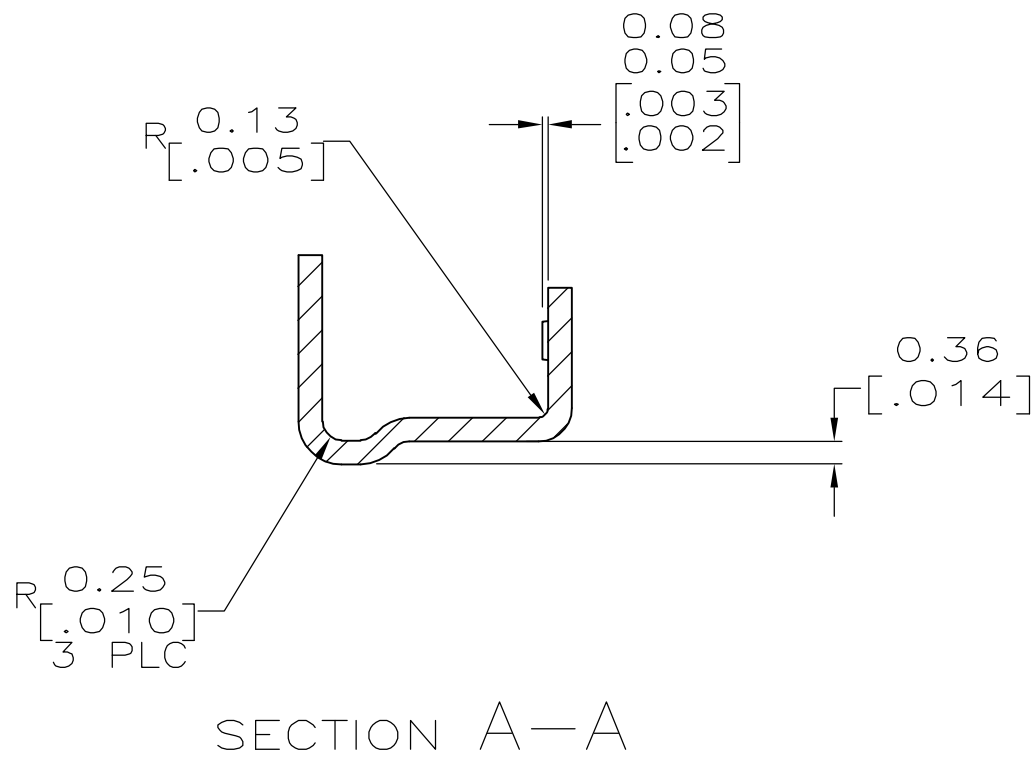
1. INSULATION RANGE: 1.09–2.79 [.043–.110]  
WIRE RANGE: 0.2–0.9 mm (24–18) AWG.

2 0.00203 [.000080] MIN BRIGHT TIN–LEAD OVER  
0.00127 [.000050] MIN NICKEL.

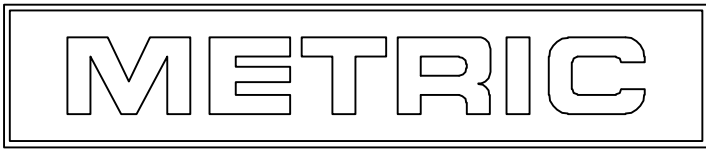
3 0.00076 [.000030] MIN THICK GOLD STRIPES IN  
LOCALIZED PLATE AREA ON BEAM AND DIMPLE OVER  
0.00127 [.000050] MIN THICK NICKEL OVER ENTIRE  
CONTACT.

4. DIMENSIONS IN BRACKETS ARE IN INCHES.

5 0.00203 [.000080] MIN BRIGHT TIN OVER  
0.00127 [.000050] MIN NICKEL.



3-DIMENSIONAL MODELS  
NTS



5	3-770522-1
3	770522-2
2	770522-1
FINISH	PART NUMBER

THIS DRAWING IS A CONTROLLED DOCUMENT.		DWN K. WHITAKER 17MAY3006	<b>tyco</b> <b>Electronics</b>		Tyco Electronics Corporation Harriaburg, Pa 17105-3608	
		CHK J. ELLIS 17MAY2006			NAME	
DIMENSIONS: mm [INCHES]	TOLERANCES UNLESS OTHERWISE SPECIFIED:		J. ELLIS 17MAY2006	RECEPTACLE, SL-156, LOOSE PIECE —		
	0 PLC ± —		PRODUCT SPEC			
	1 PLC ± —		APPLICATION SPEC			
	2 PLC ± —		SIZE    CAGE CODE    DRAWING NO    RESTRICTED TO			
	3 PLC ± —					A1    00779    C=770522    —
	4 PLC ± —					
ANGLES FINISH		—	WEIGHT    —			
MATERIAL .318 [.0125] PH BRZ		CUSTOMER DRAWING				
		SCALE    10:1    SHEET    1 OF 1    REV    D				