



Chipsmall Limited consists of a professional team with an average of over 10 year of expertise in the distribution of electronic components. Based in Hongkong, we have already established firm and mutual-benefit business relationships with customers from,Europe,America and south Asia,supplying obsolete and hard-to-find components to meet their specific needs.

With the principle of “Quality Parts,Customers Priority,Honest Operation,and Considerate Service”,our business mainly focus on the distribution of electronic components. Line cards we deal with include Microchip,ALPS,ROHM,Xilinx,Pulse,ON,Everlight and Freescale. Main products comprise IC,Modules,Potentiometer,IC Socket,Relay,Connector.Our parts cover such applications as commercial,industrial, and automotives areas.

We are looking forward to setting up business relationship with you and hope to provide you with the best service and solution. Let us make a better world for our industry!



## Contact us

Tel: +86-755-8981 8866 Fax: +86-755-8427 6832

Email & Skype: [info@chipsmall.com](mailto:info@chipsmall.com) Web: [www.chipsmall.com](http://www.chipsmall.com)

Address: A1208, Overseas Decoration Building, #122 Zhenhua RD., Futian, Shenzhen, China



LOC	DIST	REVISIONS				
		REV	DATE	BY	CHK	APP
CM	0	E1	11MAR11	RK	HMR	

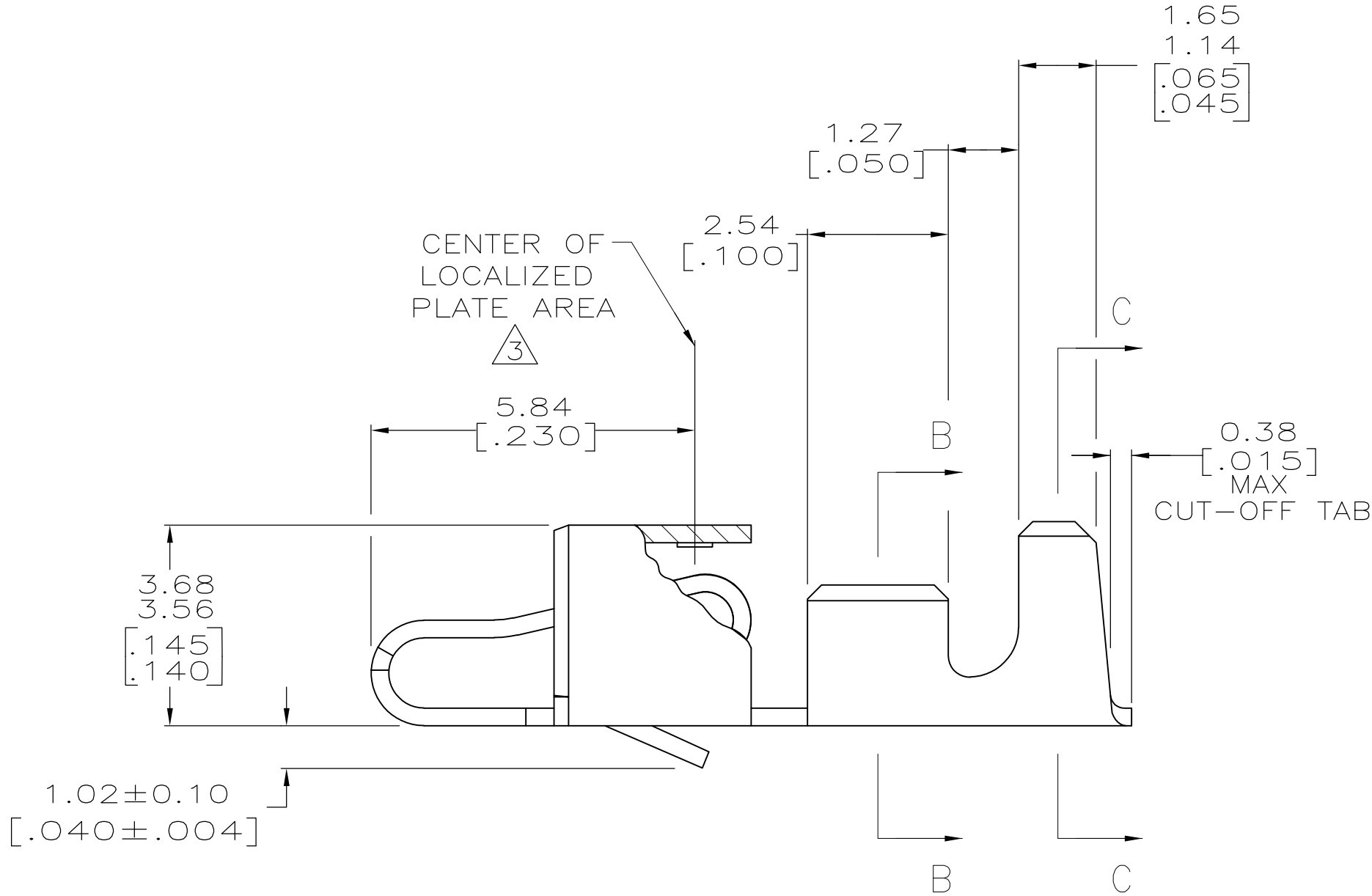
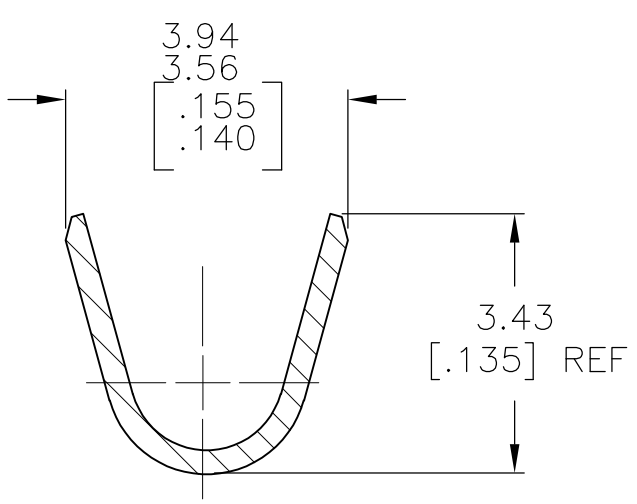
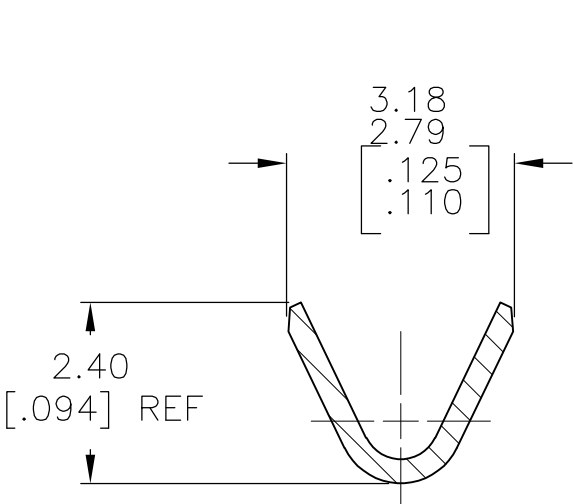
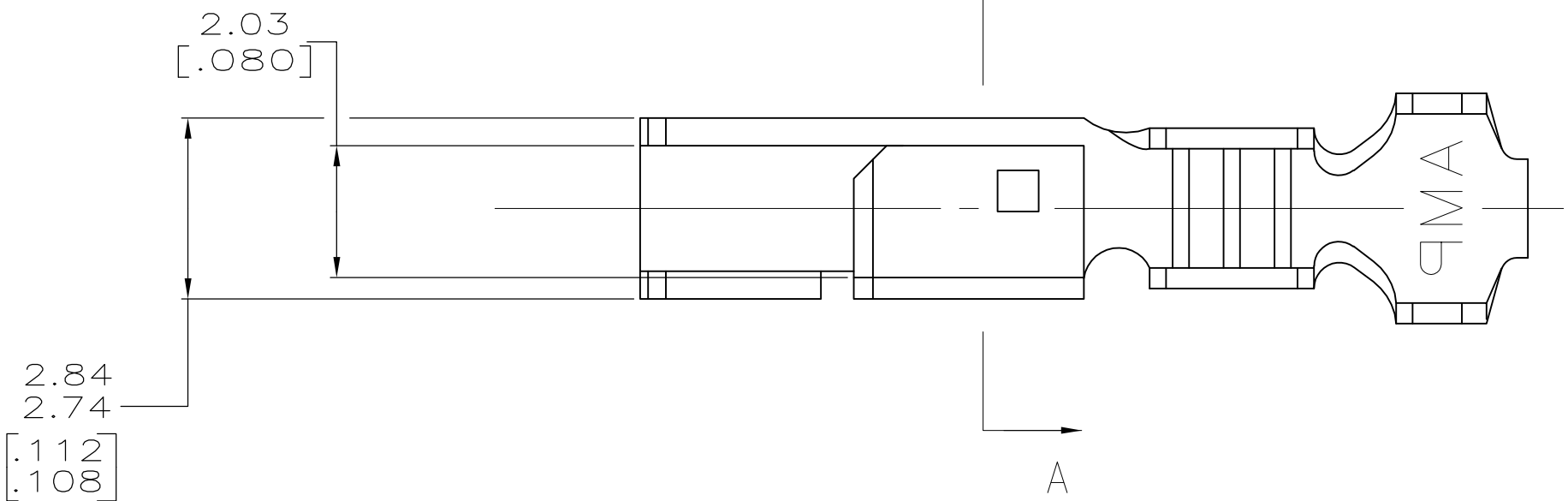
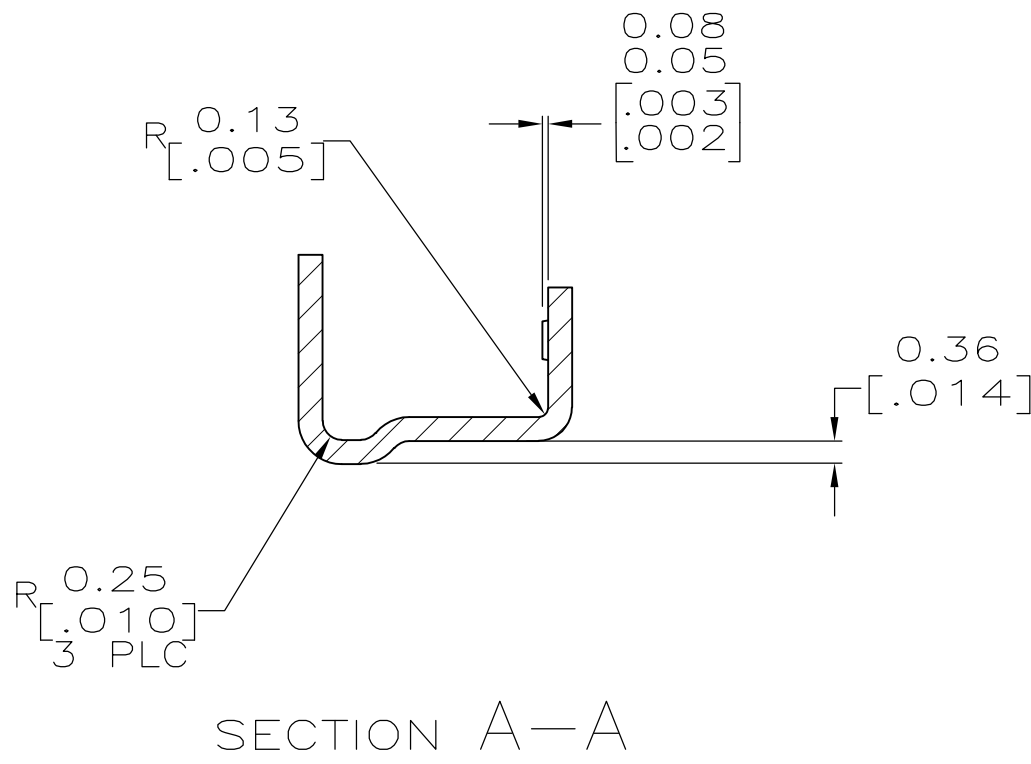
1. INSULATION RANGE: 1.09–2.79 [.043–.110]  
WIRE RANGE: 0.2–0.9 mm (24–18) AWG.

2 0.00203 [.000080] MIN BRIGHT TIN–LEAD OVER  
0.00127 [.000050] MIN NICKEL.

3 0.00076 [.000030] MIN THICK GOLD STRIPES IN  
LOCALIZED PLATE AREA ON BEAM AND DIMPLE OVER  
0.00127 [.000050] MIN THICK NICKEL OVER ENTIRE  
CONTACT.

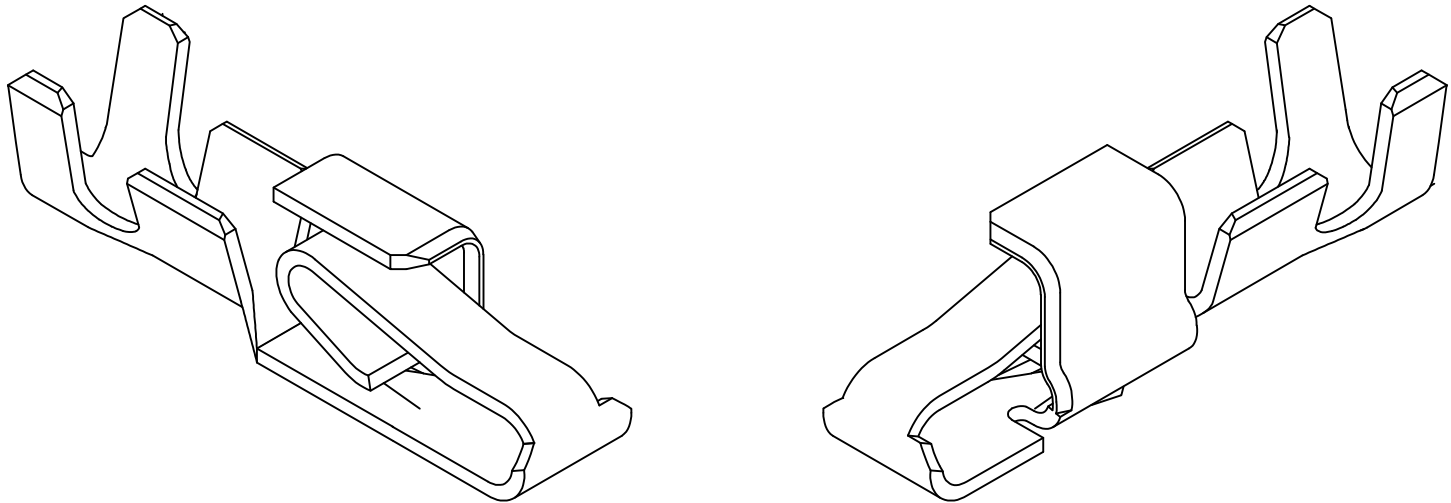
4. DIMENSIONS IN BRACKETS ARE IN INCHES.

5 0.00203 [.000080] MIN BRIGHT TIN OVER  
0.00127 [.000050] MIN NICKEL.

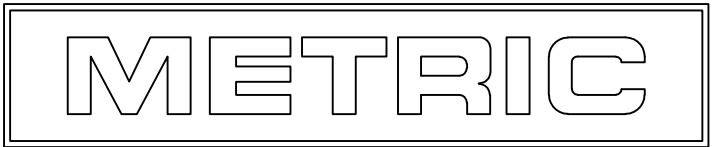


SECTION B–B

SECTION C–C



3–DIMENSIONAL MODELS  
NTS



5	3–770522–1
3	770522–2
2	770522–1
FINISH	PART NUMBER

THIS DRAWING IS A CONTROLLED DOCUMENT.		DWN K. WHITAKER 17MAY3006	TE Connectivity	
DIMENSIONS: mm [INCHES]		CHK J. ELLIS 17MAY2006	NAME	
TOLERANCES UNLESS OTHERWISE SPECIFIED:		APVD J. ELLIS 17MAY2006	RECEPTACLE, SL-156, LOOSE PIECE	
0 PLC ± – 1 PLC ± – 2 PLC ± – 3 PLC ± 0.13 [.005] 4 PLC ± – ± – ANGLES		PRODUCT SPEC	SIZE	
FINISH		APPLICATION SPEC	CAGE CODE	
MATERIAL .318 [.0125] PH BRZ		WEIGHT	DRAWING NO	
CUSTOMER DRAWING		SCALE	RESTRICTED TO	
		10:1	SHEET 1 OF 1	
			REV E1	