



Chipsmall Limited consists of a professional team with an average of over 10 year of expertise in the distribution of electronic components. Based in Hongkong, we have already established firm and mutual-benefit business relationships with customers from,Europe,America and south Asia,supplying obsolete and hard-to-find components to meet their specific needs.

With the principle of “Quality Parts,Customers Priority,Honest Operation,and Considerate Service”,our business mainly focus on the distribution of electronic components. Line cards we deal with include Microchip,ALPS,ROHM,Xilinx,Pulse,ON,Everlight and Freescale. Main products comprise IC,Modules,Potentiometer,IC Socket,Relay,Connector.Our parts cover such applications as commercial,industrial, and automotives areas.

We are looking forward to setting up business relationship with you and hope to provide you with the best service and solution. Let us make a better world for our industry!



## Contact us

Tel: +86-755-8981 8866 Fax: +86-755-8427 6832

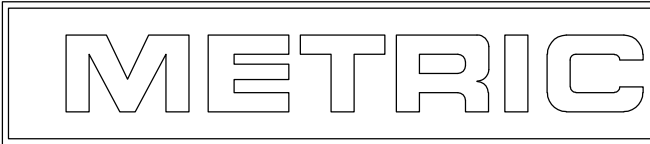
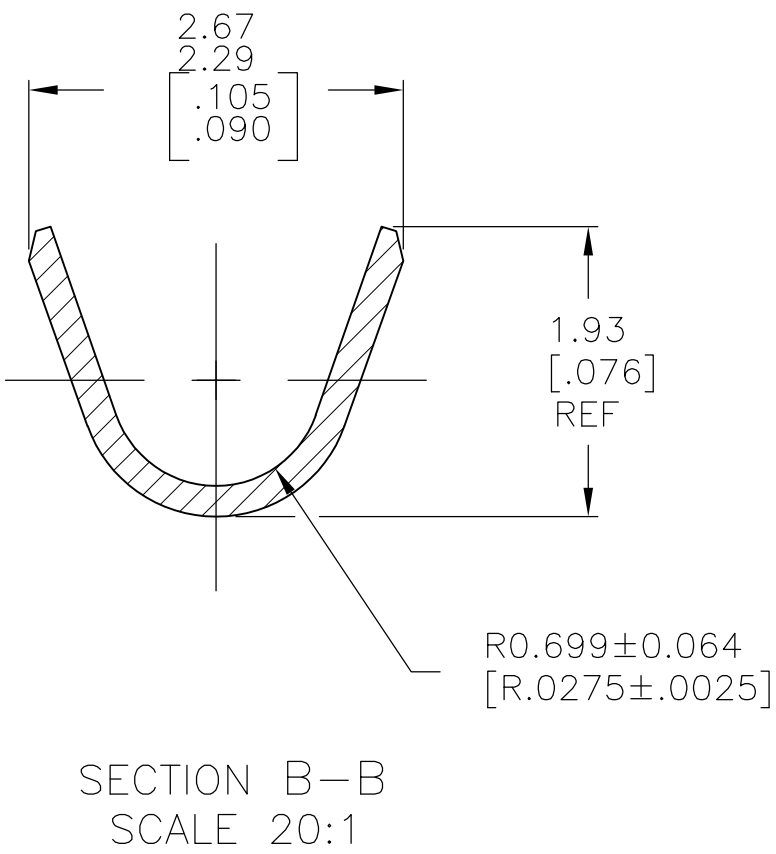
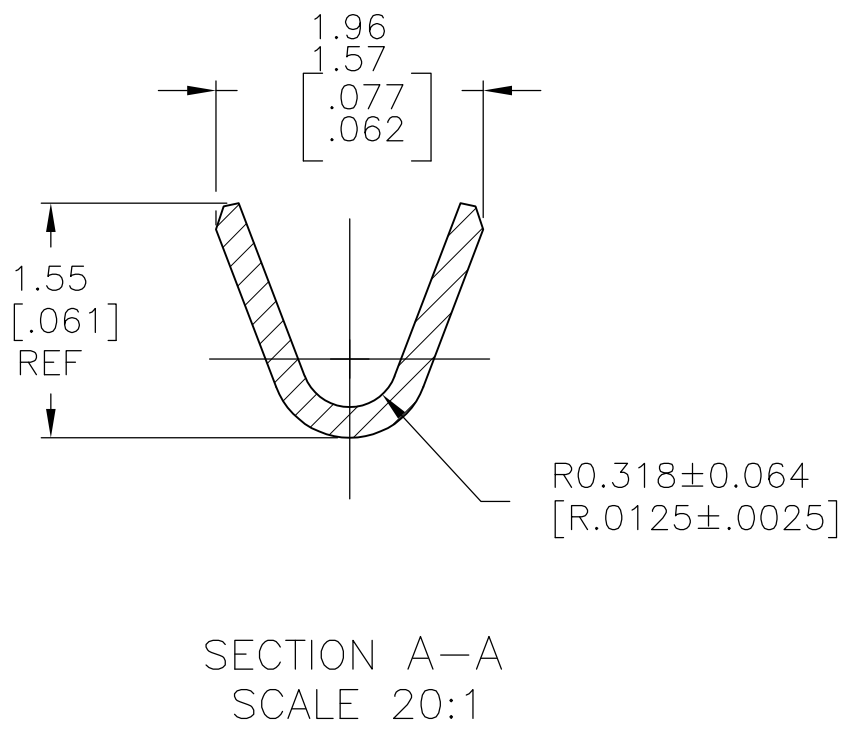
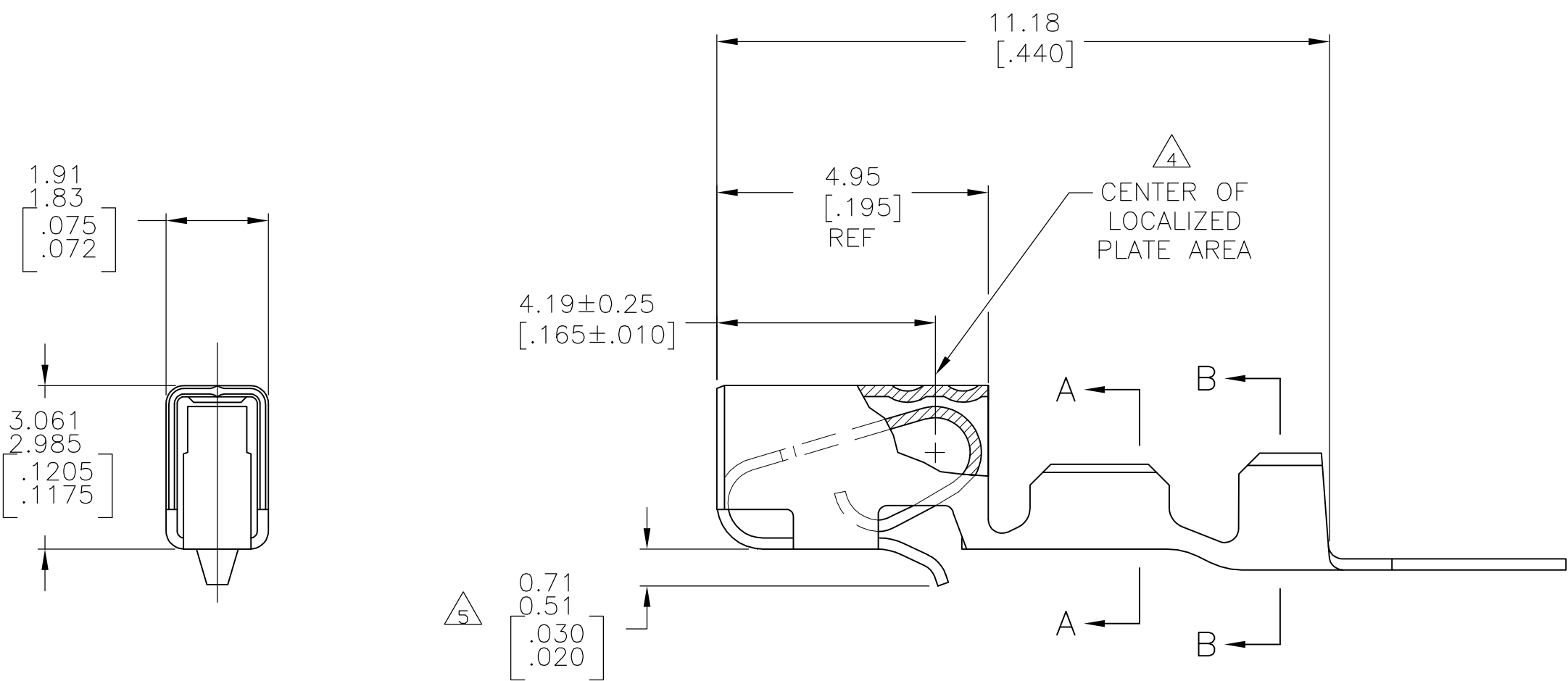
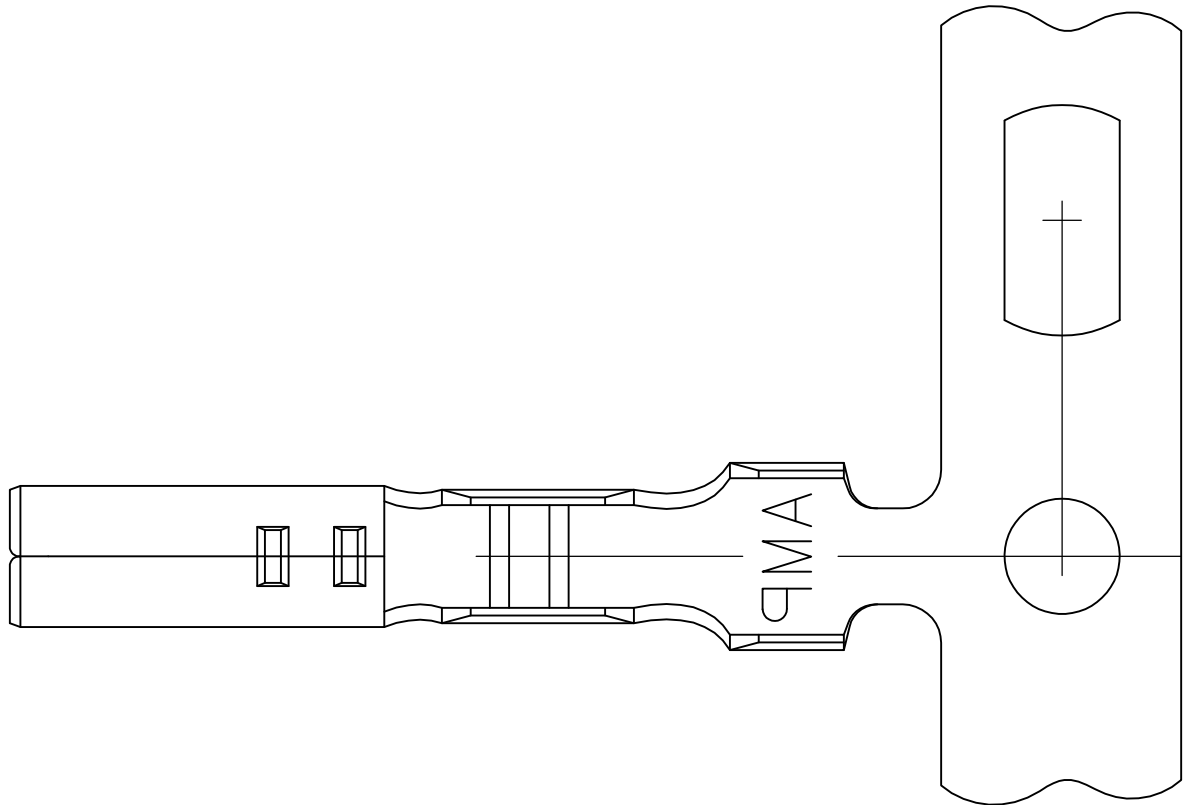
Email & Skype: [info@chipsmall.com](mailto:info@chipsmall.com) Web: [www.chipsmall.com](http://www.chipsmall.com)

Address: A1208, Overseas Decoration Building, #122 Zhenhua RD., Futian, Shenzhen, China



LOC	DIST	REVISIONS				
GP	00	REV	LTR	DESCRIPTION	DATE	OWN
		M1		REVISED PER ECO-11-004835	11MAR11	RK

1. WIRE RANGE: 0.13–0.35 mm<sup>2</sup> (26–22 AWG).
2. INSULATION RANGE: 0.89–1.65 [.035–.065] DIA. LARGER SIZES OF 1.68–1.91 [.066–.075] DIA INSULATION REQUIRES WIRE AND CRIMP EVALUATION FROM AMP INCORPORATED.
3. DIMENSIONS IN BRACKETS ARE IN INCHES.
4. 0.00076 [.000030] MIN THK GOLD STRIPES IN LOCALIZED PLATE AREA ON BEAM AND DIMPLE OVER 0.00127 [.000050] MIN THK NICKEL OVER ENTIRE CONTACT  
–OR–  
GOLD FLASH OVER PALLADIUM–NICKEL STRIPES. .00076 [.000030] MIN THK TOTAL IN LOCALIZED PLATE AREA ON BEAM AND DIMPLE OVER .00127 [.000050] MIN NICKEL OVER ENTIRE CONTACT.
5. AFTER PACKAGING AND SHIPMENT, A LANCE HEIGHT 0.46–0.71 [.018–.030] IS PERMISSABLE.
6. PRE-TIN MAY OR MAY NOT HAVE NICKEL UNDERPLATE.



THIS DRAWING IS A CONTROLLED DOCUMENT.		DWN K. WHITAKER 17FEB05	770601-2	
DIMENSIONS: mm [INCHES]		CHK D. BOSSI 17FEB05	PRE-TIN 6	
TOLERANCES UNLESS OTHERWISE SPECIFIED:		APVD D. BOSSI 17FEB05	770601-1	
0 PLC ± -		NAME	PART NUMBER	
1 PLC ± -		PRODUCT SPEC	RECEPTACLE, CST-100	
2 PLC ± -		APPLICATION SPEC	-	
3 PLC ± 0.13 [.005]		SIZE	CAGE CODE	DRAWING NO
4 PLC ± - ± -		WEIGHT	—	—
MATERIAL 0.198 PH BRZ		CUSTOMER DRAWING	SCALE 10:1	SHEET 1 OF 1
FINISH SEE TABLE		REV M1		