



Chipsmall Limited consists of a professional team with an average of over 10 year of expertise in the distribution of electronic components. Based in Hongkong, we have already established firm and mutual-benefit business relationships with customers from,Europe,America and south Asia,supplying obsolete and hard-to-find components to meet their specific needs.

With the principle of "Quality Parts,Customers Priority,Honest Operation,and Considerate Service",our business mainly focus on the distribution of electronic components. Line cards we deal with include Microchip,ALPS,ROHM,Xilinx,Pulse,ON,Everlight and Freescale. Main products comprise IC,Modules,Potentiometer,IC Socket,Relay,Connector.Our parts cover such applications as commercial,industrial, and automotives areas.

We are looking forward to setting up business relationship with you and hope to provide you with the best service and solution. Let us make a better world for our industry!



## Contact us

Tel: +86-755-8981 8866 Fax: +86-755-8427 6832

Email & Skype: info@chipsmall.com Web: www.chipsmall.com

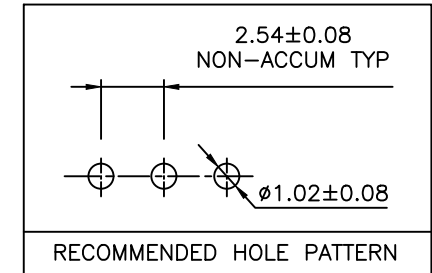
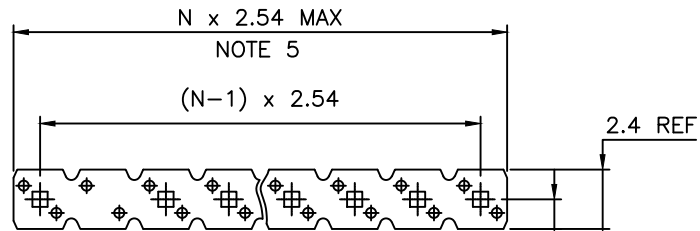
Address: A1208, Overseas Decoration Building, #122 Zhenhua RD., Futian, Shenzhen, China



PRODUCT NUMBER

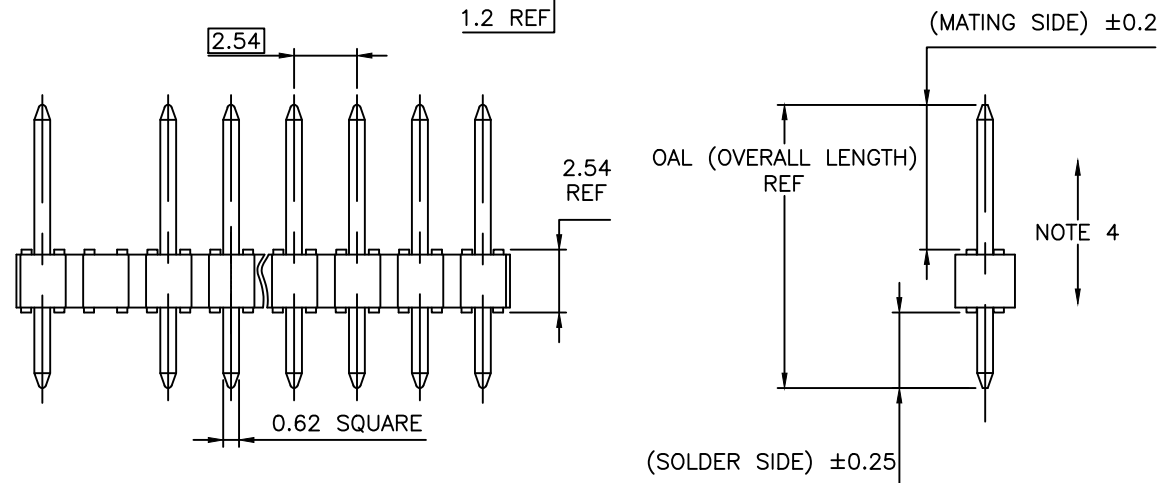
77312-YXX-LF

- RoHS COMPATIBLE  
SEE NOTE 7
- PACKAGING SEE NOTE 8
- PIN STYLE
- PLATING SEE SHEET 2



NOTES:

1. HOUSING MAT'L : HIGH TEMPERATURE THERMOPLASTIC. UL94V-0 COLOR: BLACK
2. PIN MATERIAL : PHOSPHOR BRONZE
3. PRODUCT PACKAGED IN POLY BAGS.
4. 9N MIN RETENTION IN EITHER DIRECTION
5. TO DETERMINE DIMENSIONS :  
N = NUMBER OF POSITIONS PER ROW  
EXAMPLE : 8 POS N x 2.54 = 20.32mm
6. UNDERPLATING : 1.27µm Ni MIN
7. RoHS COMPATIBLE PRODUCT SPECIFICATIONS



a - PLATING:

- "LF" MEANS THE PRODUCT IS LEAD-FREE, 2µm MINIMUM MATTE TIN OVER 1.27µm MINIMUM NICKEL UNDERPLATE.

b - MANUFACTURING PROCESS COMPATIBILITY

- THE HOUSING WILL WITHSTAND EXPOSURE TO 260°C ±5°C SOLDER BATH TEMPERATURE FOR 5 SECONDS IN A WAVE SOLDER APPLICATION WITH A 1.6mm MIN THICK CIRCUIT BOARD.

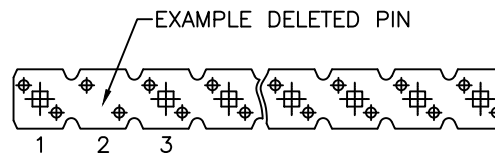
c - LABELING:

- MEETS PACKAGING SPECS AS PER GS-14-920

d - LEGAL STATEMENT: SEE GS-47-0004

8. PACKAGING

- BLANK = POLYBAGS
- KV = TAPE&REEL PACKAGING WITHOUT PICK UP CAP FOR CUSTOMER DEDICATED PART. ONLY P/N 77312-496KVLF

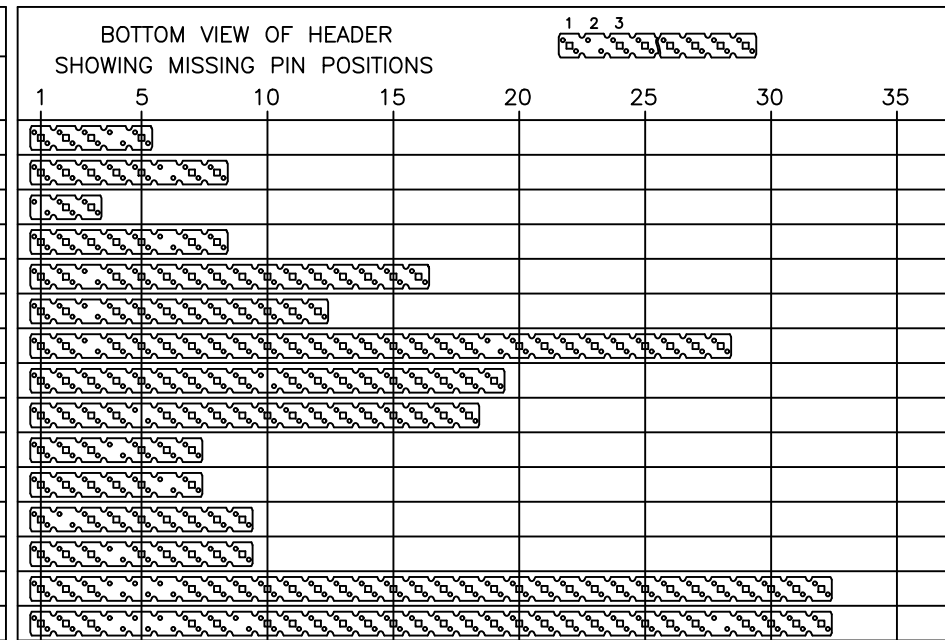


BOTTOM VIEW

PRELIMINARY

mat'l. code SEE NOTES		surface ISO 1302 ✓		tolerance ISO 406 ISO 1101		projection mm		product family BSTIK	
ltr ecn no dr date		tolerances unless otherwise specified		angles Linear		scale 5:1		title HEADER SR,STR, POL,DUPLEX,2.54mm	
AR F-24825 AMA 16.08.26								dwg no 77312	
AS F-25332 DDE 16.11.15								sheet 1 of 5 size A3	
AT F-25396 LMU 16.11.21								type CUSTOMER Drawing	
AU F-28244 DDE 17.09.20		dr COMPAGNON J 95.10.27		enrg JMC 95.10.27					
AN B-21118 LMU 15.06.10		chr							
AP F-24327 AMA 16.06.17		appd JMC 95.10.27							
sheet index	revision sheet	AU 1	T 2	N 3	Y 4	H 5			

PIN STYLE	PRODUCT DEFINITION			
	NB OF POS	MATING SIDE	SOLDER SIDE	("OAL") REF
01	1x5	5.84	3.42	11.8
02	1x8	5.84	3.42	11.8
03	1x3	5.84	3.42	11.8
04	1x8	5.72	2.54	10.8
05	1x16	5.72	2.54	10.8
06	1x12	5.72	2.54	10.8
07	1x28	5.84	3.42	11.8
15	1x19	5.84	3.42	11.8
16	1x18	5.84	3.42	11.8
17	1x7	5.84	3.42	11.8
18	1x7	5.84	3.42	11.8
19	1x9	5.84	3.42	11.8
20	1x9	5.84	3.42	11.8
21	1x32	5.84	3.42	11.8
22	1x32	5.84	3.42	11.8



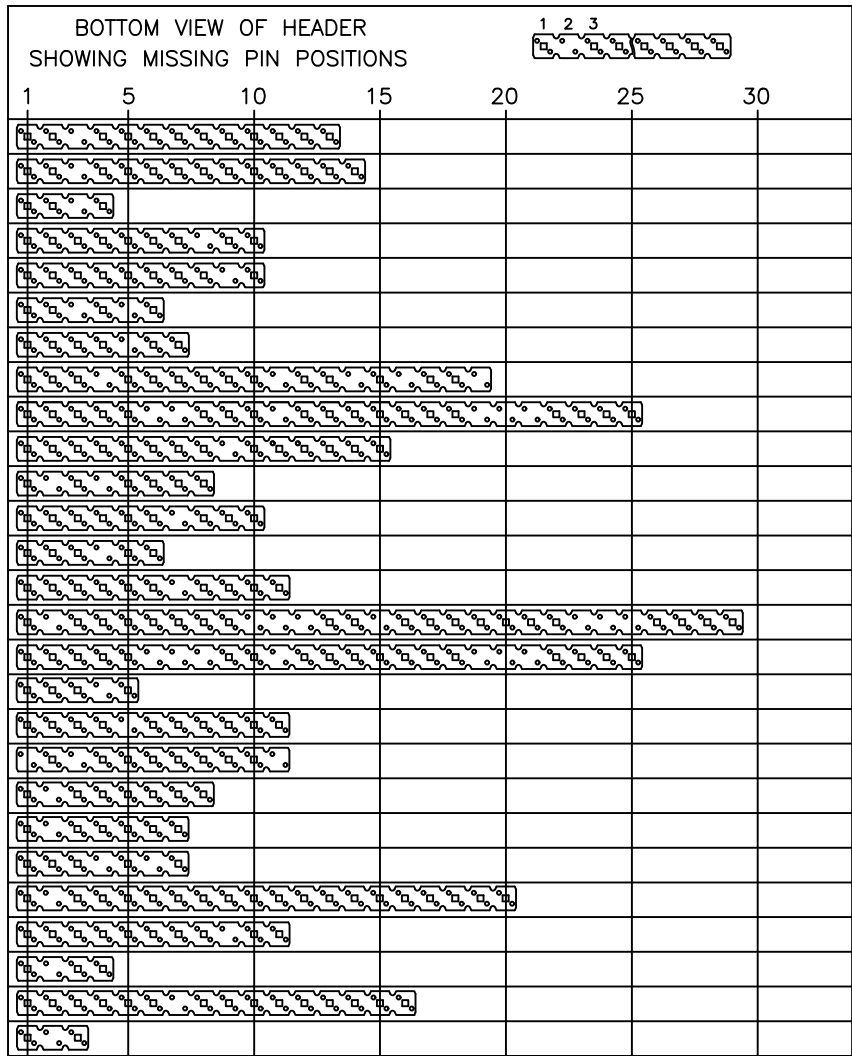
77312-GXXLF	0.76μm FULL GXT	
77312-SXXLF	0.38μm FULL GXT	
77312-8XXLF	0.38μm Au/GXT	2.0-7.5μm Sn MATTE
77312-5XXLF	0.25μm Au/GXT	2.0-7.5μm Sn MATTE
77312-4XXLF	2.0-7.5μm FULL MATTE TIN	
77312-2XXLF	1.27μm Au	2.0-7.5μm Sn MATTE
77312-1XXLF	0.76μm Au/GXT	2.0-7.5μm Sn MATTE
77312-1XXSLF	0.76μm Au/GXT	GOLD FLASH
PLATING CODE	CONTACT AREA	REMAINDER
	PLATING THICKNESS OVER 1.27μm Ni	

mat'l. code		surface		tolerance		projection		product family	
		ISO 1302		ISO 406 ISO 1101				BSTIK	
ltr		ecn no		dr		date		title	
S		B-18917		LMU		14.09.26		HEADER,SR,STR,	
T		B-21118		LMU		15.06.10		POL,DUPLX,2.54mm	
		angles		linear		mm		scale 1:1	
M		F10707		LMU		01.11.28		dr COMPAGNON J	
N		F06-0196		LMU		06.06.20		enr JMC	
P		F08-0148		RTR		08.03.31		chr	
R		B-17773		LMU		14.05.26		appd JMC	
sheet		revision							
index		sheet							



Copyright FCI

PIN STYLE	PRODUCT DEFINITION			
	NB OF POS	MATING SIDE	SOLDER SIDE	("OAL") REF
23	1x 13	5.84	3.42	11.8
24	1x 14	5.84	3.42	11.8
25	1x 4	5.84	3.42	11.8
26	1x 10	5.84	3.42	11.8
27	1x 10	5.84	3.42	11.8
28	1x 6	5.72	2.54	10.8
29	1x 7	5.84	3.42	11.8
30	1x 19	5.84	3.42	11.8
31	1x 25	5.84	3.42	11.8
32	1x 15	5.84	3.42	11.8
33	1x 8	5.84	3.42	11.8
34	1x 10	5.84	3.42	11.8
35	1x 6	5.84	3.42	11.8
36	1x 11	5.84	3.42	11.8
37	1x 29	5.84	3.42	11.8
38	1x 25	5.84	3.42	11.8
39	1x 5	5.72	2.54	10.8
40	1x 11	5.72	3.05	11.3
41	1x 11	5.72	3.05	11.3
42	1x 8	7.75	3.06	13.35
43	1x 7	5.84	3.42	11.8
44	1x 7	5.72	2.54	10.8
45	1x 20	5.72	7.64	15.9
46	1x 11	5.72	3.05	11.3
48	1x 4	5.72	3.05	11.3
49	1x 16	5.72	7.64	15.9
50	1x 3	5.72	3.05	11.3

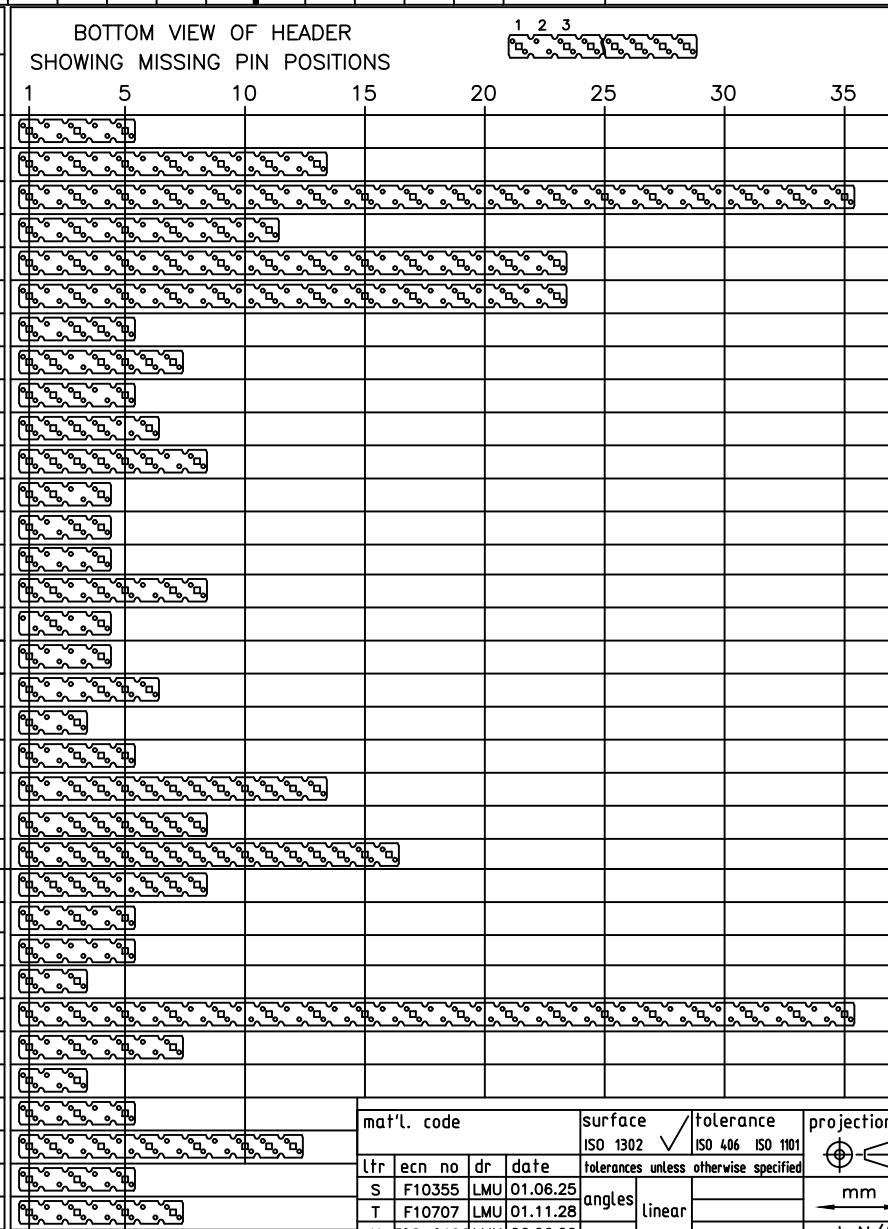


FCIconnect.com

Copyright FCI

mat'l. code		surface		tolerance		projection		product family	
		ISO 1302		ISO 406 ISO 1101				BSTIK	
ltr		ecn no		dr		date		title	
J		F40810		JMC		94.10.20		HEADER, SR, STR,	
K		F50801		JMC		95.10.27		POL, DUPLEX, 2.54mm	
L		F10707		LMU		01.11.28		scale 1:1	
M		F06-0196		LMU		06.06.20			
N		F11-0034		LMU		11.03.03		dwg no	
								sheet 3 of - size	
								77312 A3	
								type CUSTOMER Drawing	
sheet index		revision sheet							

PIN STYLE	PRODUCT DEFINITION			
	NB OF POS	MATING SIDE	SOLDER SIDE	("OAL") REF
51	1x5	5.72	3.05	11.3
52	1x13	5.72	3.05	11.3
53	1x35	5.72	3.05	11.3
54	1x11	5.72	3.05	11.3
55	1x23	12.83	3.03	18.4
56	1x23	17.5	3.46	23.5
57	1x5	5.84	3.42	11.8
58	1x7	5.72	3.05	11.3
59	1x5	5.72	3.05	11.3
60	1x6	5.72	3.05	11.3
61	1x8	5.72	3.05	11.3
62	1x4	5.72	3.05	11.3
63	1x4	15.57	2.84	20.95
65	1x4	5.72	2.54	10.8
66	1x8	5.72	2.54	10.8
67	1x4	5.72	3.05	11.3
68	1x4	5.72	3.05	11.3
69	1x6	5.72	3.05	11.3
70	1x3	5.72	2.54	10.8
71	1x5	5.84	2.42	10.8
72	1x13	5.72	2.54	10.8
73	1x8	5.84	2.41	10.8
74	1x16	5.84	2.41	10.8
75	1x08	5.84	2.41	10.8
76	1x05	2.50	1.80	6.84
77	1x05	2.50	1.80	6.84
78	1x03	8.13	2.33	13.00
79	1x35	5.84	3.42	11.80
80	1x07	2.50	1.80	6.84
81	1x03	24.90	3.00	30.40
82	1x05	20.65	11.00	34.15
83	1x12	5.84	3.42	11.80
84	1x05	8.00	2.90	13.40
85	1x07	8.00	2.90	13.40



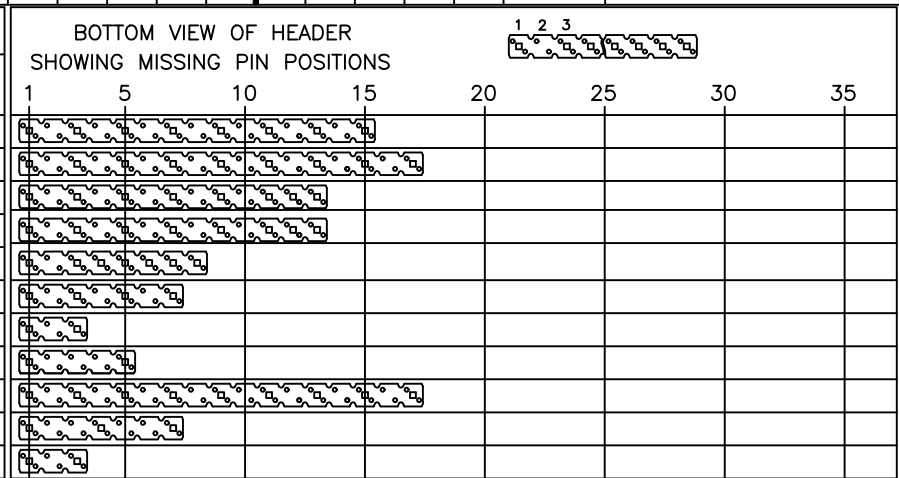
mat'l. code		surface		tolerance		projection	
		ISO 1302		ISO 406 ISO 1101			
		tolerances unless otherwise specified				mm	
		angles		Linear		scale N/A	
lfr	ecn no	dr	date	COMPAGNON J		95.10.11	
S	F10355	LMU	01.06.25	JMC		95.10.27	
T	F10707	LMU	01.11.28	JMC		95.10.27	
U	F06-0196	LMU	06.06.20	JMC		95.10.27	
V	F11-0034	LMU	11.03.03	JMC		95.10.27	
W	F11-0045	LMU	11.04.06	JMC		95.10.27	
X	F11-0329	LMU	11.11.17	JMC		95.10.27	
Y	B-16703	LMU	14.01.09	JMC		95.10.27	
sheet	revision						
index	sheet						

product family		BSTIK	
title		HEADER,SR,STR, POL,DUPLX,2.54mm	
dwg no	77312	sheet 4 of	size
type	CUSTOMER	Drawing	A3



Copyright FCI

PIN STYLE	PRODUCT DEFINITION			
	NB OF POS	MATING SIDE	SOLDER SIDE	("OAL") REF
86	1x 15	12.56	0.8	15.90
87	1x 17	12.56	0.8	15.90
88	1x 13	5.72	3.05	11.30
89	1x 13	5.84	3.42	11.80
90	1x 08	7.50	3.42	13.46
91	1x 07	12.83	3.03	18.40
92	1x 03	3.55	3.05	9.14
93	1x 05	3.55	3.05	9.14
94	1x 17	11.60	5.05	19.15
95	1x 07	5.84	3.05	11.43
96	1x 03	11.76	3.60	17.90



Copyright FCI

mat'l. code		surface		tolerance		projection		product family	
		ISO 1302 <input checked="" type="checkbox"/>		ISO 406 ISO 1101				BSTIK	
ltr	ecr no	dr	date	tolerances unless otherwise specified		mm		title	
H	F-28244	DDE	17.09.20	angles	Linear			HEADER,SR,STR, POL,DUPLEX,2.54mm	
C	B-20230	LMU	15.02.09			scale N/A		dwg no	
D	F-24327	AMA	16.06.17	dr	L.MULIN	14.05.26		sheet 5 of	
E	F-24825	AMA	16.08.26	enr	JMC	14.05.26		size	
F	F-25332	DDE	16.11.15	chr				77312 A3	
G	F-25396	LMU	16.11.21	app		95.10.27		type CUSTOMER Drawing	
sheet index	revision sheet								