



Chipsmall Limited consists of a professional team with an average of over 10 year of expertise in the distribution of electronic components. Based in Hongkong, we have already established firm and mutual-benefit business relationships with customers from,Europe,America and south Asia,supplying obsolete and hard-to-find components to meet their specific needs.

With the principle of "Quality Parts,Customers Priority,Honest Operation,and Considerate Service",our business mainly focus on the distribution of electronic components. Line cards we deal with include Microchip,ALPS,ROHM,Xilinx,Pulse,ON,Everlight and Freescale. Main products comprise IC,Modules,Potentiometer,IC Socket,Relay,Connector.Our parts cover such applications as commercial,industrial, and automotives areas.

We are looking forward to setting up business relationship with you and hope to provide you with the best service and solution. Let us make a better world for our industry!



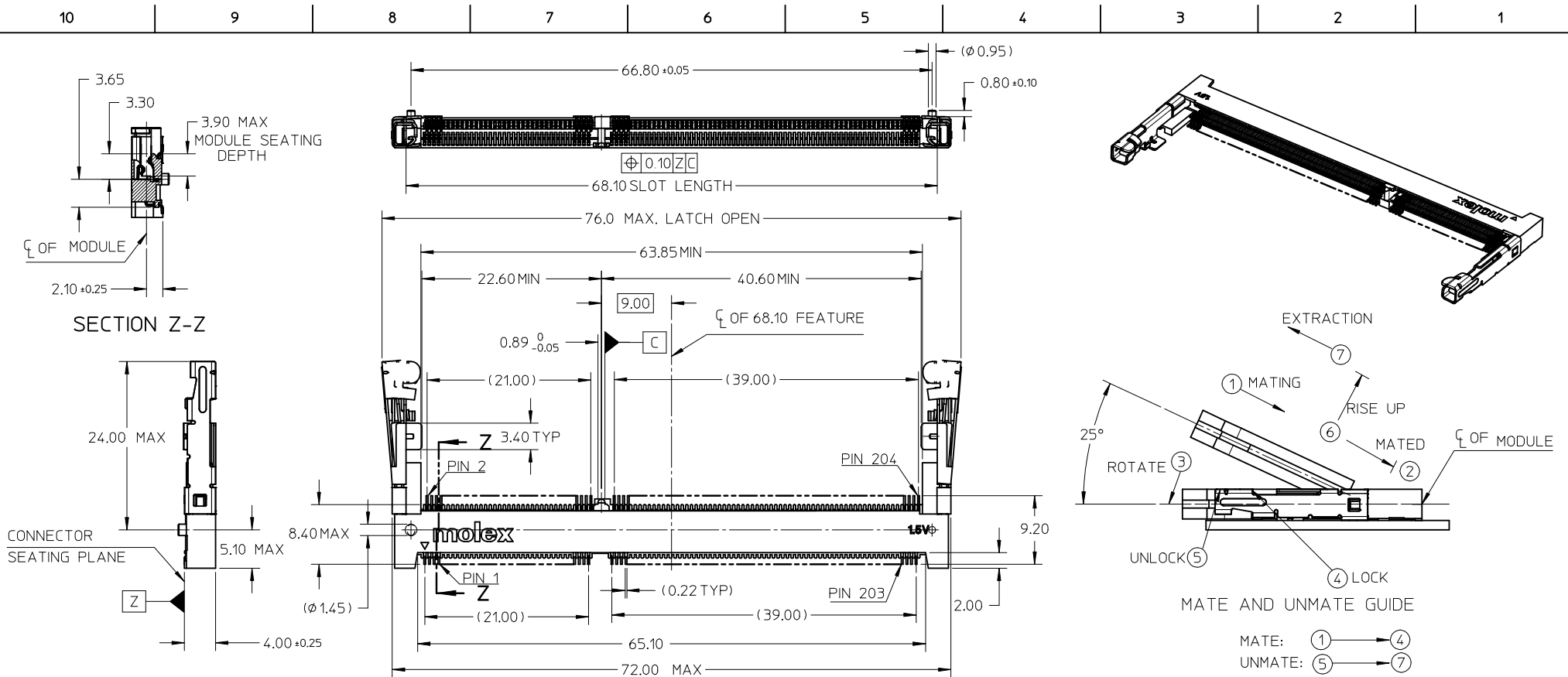
Contact us

Tel: +86-755-8981 8866 Fax: +86-755-8427 6832

Email & Skype: info@chipsmall.com Web: www.chipsmall.com

Address: A1208, Overseas Decoration Building, #122 Zhenhua RD., Futian, Shenzhen, China





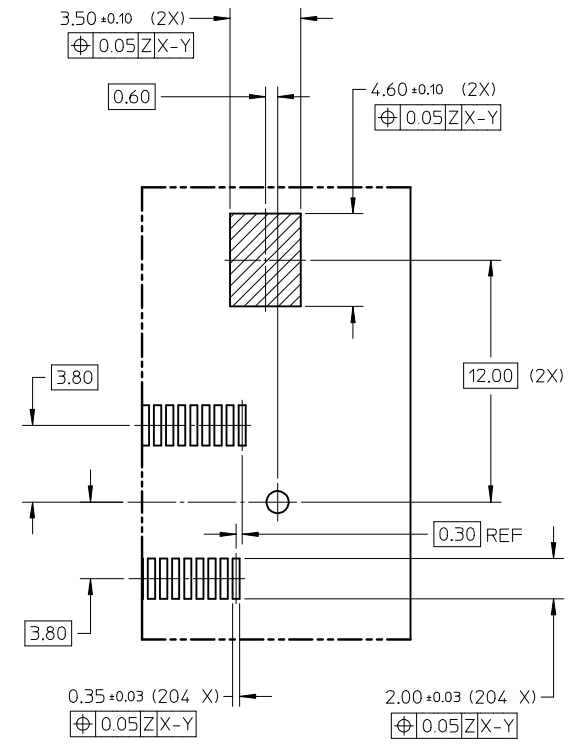
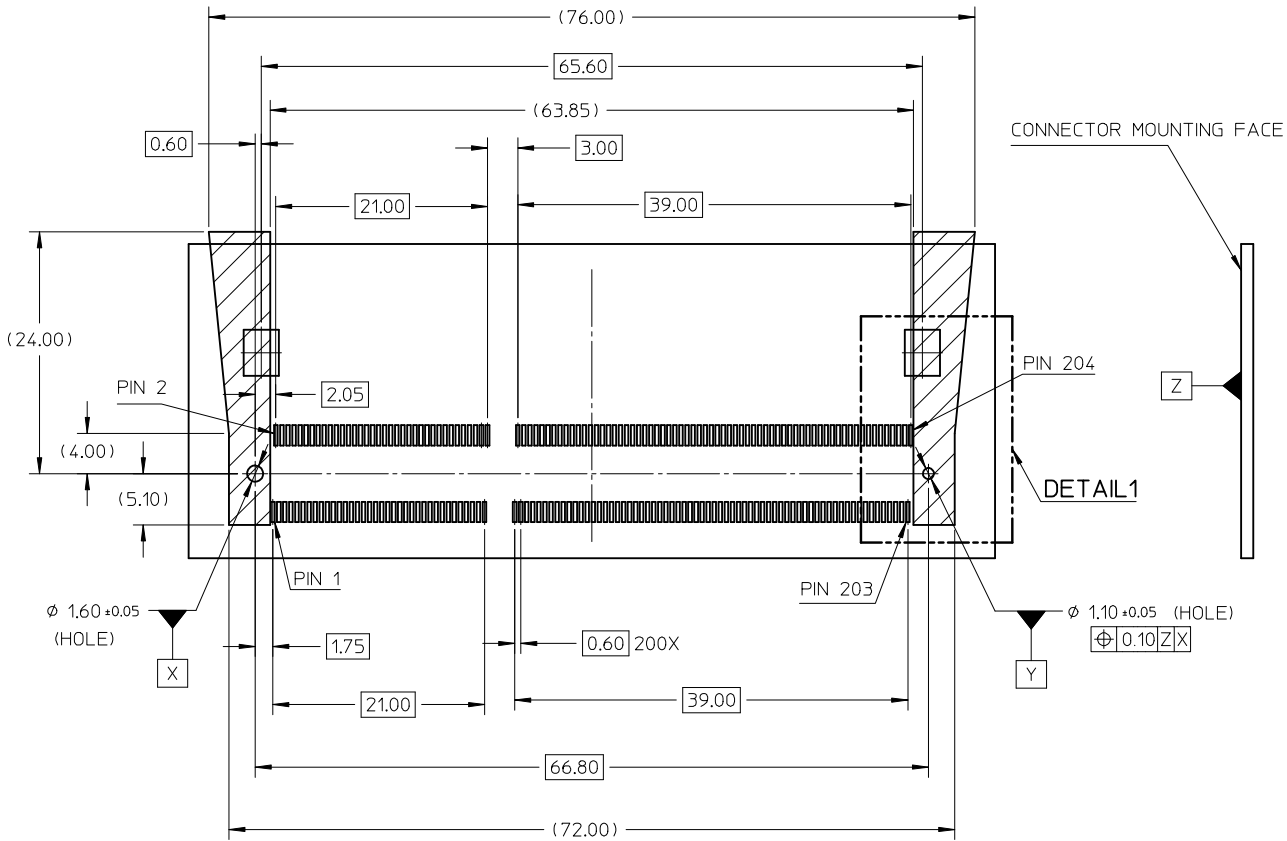
NOTE :

- MATERIAL:**
HOUSING : LCP - UL94V-0, COLOR: BLACK
CONTACTS : COPPER ALLOY
LOCK LEVER : STAINLESS STEEL
- FINISHES:**
CONTACT AREA : REFER TABLE.
SOLDER TAIL AREA : GOLD FLASH OVER 50μN/1.27μM NICKEL.
LOCK LEVER SOLDER PAD: 100μN/2.54μM MATTE TIN OVER 50μN/1.27μM NICKEL.
- RECOMMENDED MODULE LAYOUT SHALL BE AS PER JEDEC MO-268
- PRODUCT SPEC AS PER - PS-78194-001, PS-78194-003
- PART SHALL BE PACKED IN TRAY / TAPE & REEL
- EDGE OF CONTACT PADS SHALL BE FREE OF BURRS AND EXTERNAL TIE BARS
- THE ADDITION OF THIS BEVEL IS A FABRICATION OPTION AND IS NOT REQUIRED. THE BEVEL AIDS THE INSERTION OF THE MODULES INTO THE CONNECTOR.
THE BEVEL MUST NOT ENCRORCH ONTO GOLD PADS.
- COPLANARITY INCLUDES HOLD DOWN 0.1 MAX

| PART NO. | CONTACT AREA FINISH | SOLDER TAIL FINISH | PACKAGING |
|------------|--|------------------------------------|-------------|
| 78194-0001 | 3μN/0.076μM GOLD OVER 50μN/1.27μM NICKEL | GOLD FLASH OVER 50μN/1.27μM NICKEL | TRAY |
| 78194-1501 | 15μN/0.38μM GOLD OVER 50μN/1.27μM NICKEL | | |
| 78194-3001 | 30μN/0.76μM GOLD OVER 50μN/1.27μM NICKEL | GOLD FLASH OVER 50μN/1.27μM NICKEL | TAPE & REEL |
| 78194-0011 | 3μN/0.076μM GOLD OVER 50μN/1.27μM NICKEL | | |
| 78194-1511 | 15μN/0.38μM GOLD OVER 50μN/1.27μM NICKEL | | |
| 78194-3011 | 30μN/0.76μM GOLD OVER 50μN/1.27μM NICKEL | | |

| ADD GF DETAILS EC NO: S2010-0162 DRWN: TARUMUGHAM 2009/08/28 CHKD: CGTAN 2009/08/28 APPR: SHLENI 2009/09/02 REV: A3 | QUALITY SYMBOLS ▽=0 ◻=0 | GENERAL TOLERANCES (UNLESS SPECIFIED) <table border="1"> <tr> <th></th> <th>mm</th> <th>INCH</th> </tr> <tr> <td>4 PLACES</td> <td>± ---</td> <td>± ---</td> </tr> <tr> <td>3 PLACES</td> <td>± ---</td> <td>± ---</td> </tr> <tr> <td>2 PLACES</td> <td>± 0.2</td> <td>± ---</td> </tr> <tr> <td>1 PLACE</td> <td>± ---</td> <td>± ---</td> </tr> </table> | | mm | INCH | 4 PLACES | ± --- | ± --- | 3 PLACES | ± --- | ± --- | 2 PLACES | ± 0.2 | ± --- | 1 PLACE | ± --- | ± --- | DIMENSION STYLE MM ONLY DRAWN BY: VMANICKAM DATE: 2007/07/16 CHECKED BY: CCTEH DATE: 2007/09/03 APPROVED BY: SHLENI DATE: 2007/09/03 | SCALE NTS DESIGN UNITS METRIC | THIRD ANGLE PROJECTION |
|---|--------------------------------------|---|---|----|------|----------|-------|-------|----------|-------|-------|----------|-------|-------|---------|-------|-------|--|--|-------------------------------|
| | | mm | INCH | | | | | | | | | | | | | | | | | |
| | 4 PLACES | ± --- | ± --- | | | | | | | | | | | | | | | | | |
| | 3 PLACES | ± --- | ± --- | | | | | | | | | | | | | | | | | |
| 2 PLACES | ± 0.2 | ± --- | | | | | | | | | | | | | | | | | | |
| 1 PLACE | ± --- | ± --- | | | | | | | | | | | | | | | | | | |
| DRIFT WHERE APPLICABLE MUST REMAIN WITHIN DIMENSIONS | | SEE TABLE | TITLE DDR3 SODIMM 204 CKTS, 4.0MM HEIGHT STANDARD ORIENTATION MOLEX INCORPORATED DOCUMENT NO. SD-78194-001 | | | | | | | | | | | | | | | | | |
| | | SIZE: A3 THIS DRAWING CONTAINS INFORMATION THAT IS PROPRIETARY TO MOLEX INCORPORATED AND SHOULD NOT BE USED WITHOUT WRITTEN PERMISSION | SHEET NO. 1 OF 5 | | | | | | | | | | | | | | | | | |

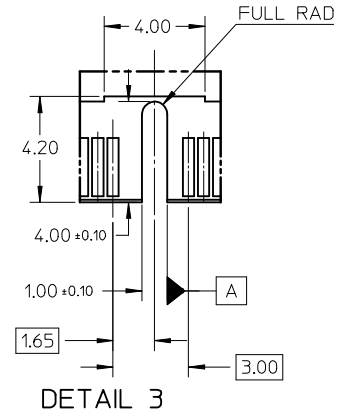
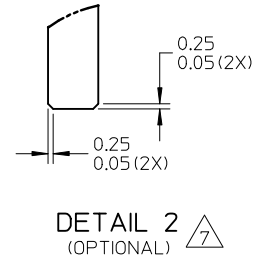
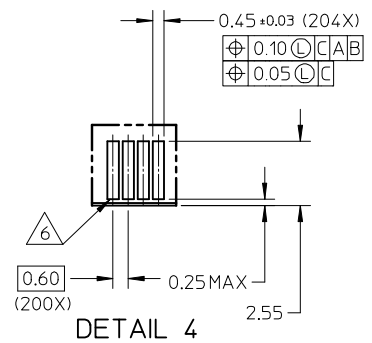
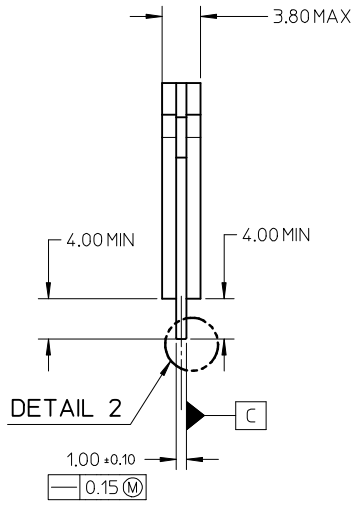
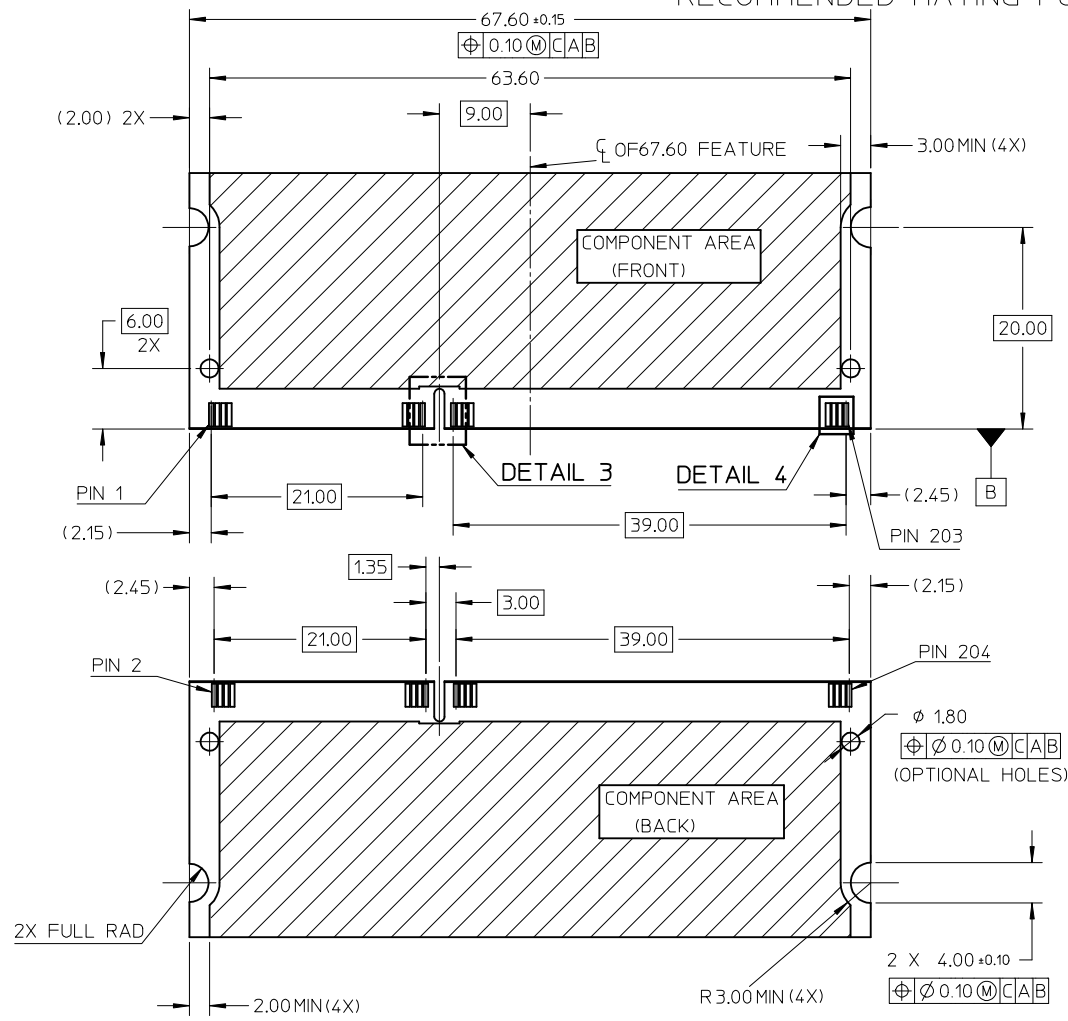
RECOMMENDED PCB LAYOUT FOR STANDARD ORIENTATION (TOP VIEW)



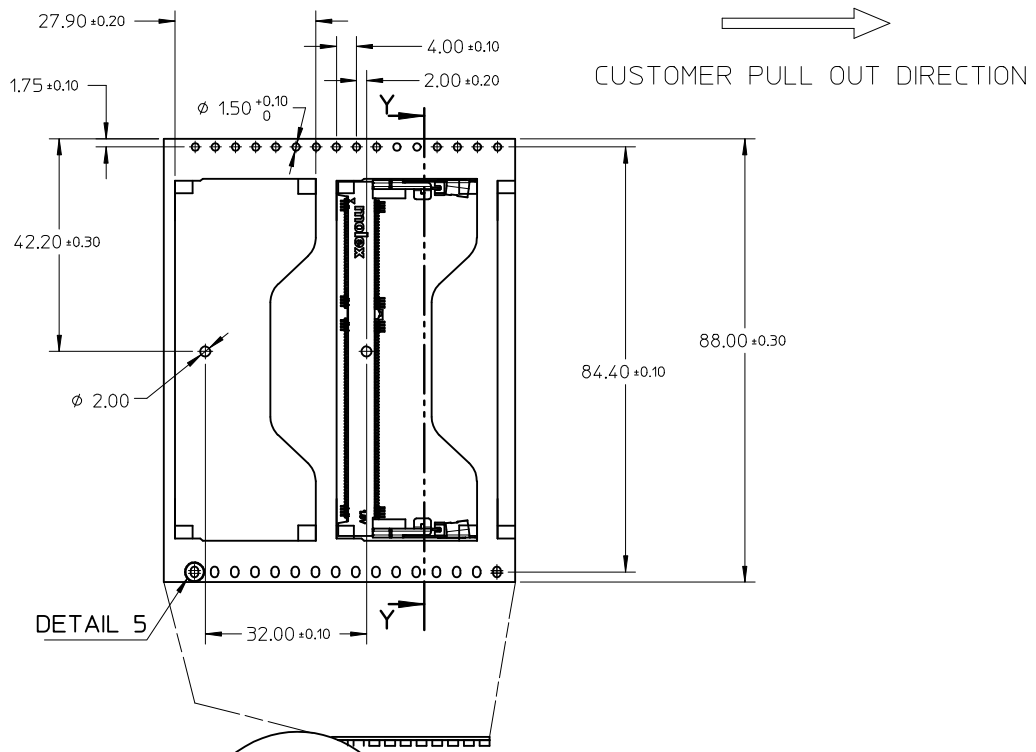
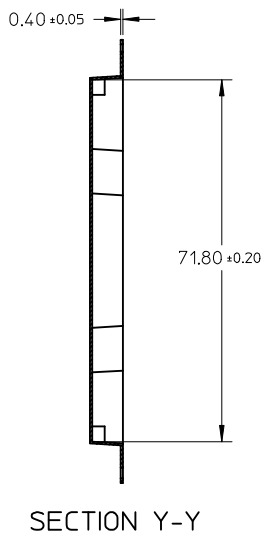
DETAIL1

| | | | | | | | | |
|--|--------------------|-------------------------------|--|---|---|---|------------------------|--|
| ADD GF DETAILS EC NO: S2010-0162 DRWN: TARUNGHAM 2009/08/28 CHKD: CGTAN 2009/08/28 APPR: SHLENI 2009/09/02 | DESCRIPTION REV | QUALITY SYMBOLS | GENERAL TOLERANCES (UNLESS SPECIFIED) | DIMENSION STYLE | SCALE | DESIGN UNITS | THIRD ANGLE PROJECTION | |
| | | $\nabla = 0$ $\square = 0$ | mm INCH 4 PLACES ± --- ± --- 3 PLACES ± --- ± --- 2 PLACES ± 0.2 ± --- 1 PLACE ± --- ± --- ANGULAR ± 2 ° | MM ONLY | NTS | METRIC | | |
| | | | DRAFT WHERE APPLICABLE MUST REMAIN WITHIN DIMENSIONS | DRAWN BY: VMANICKAM DATE: 2007/07/16 CHECKED BY: CCTEH DATE: 2007/09/03 APPROVED BY: SHLENI DATE: 2007/09/03 MATERIAL NO. | TITLE | DDR3 SODIMM 204 CKTS. 4.0MM HEIGHT STANDARD ORIENTATION | | |
| | | A3 | | SEE TABLE | MOLEX INCORPORATED DOCUMENT NO. SD-78194-001 | SHEET NO. | 2 OF 5 | |

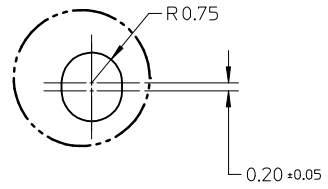
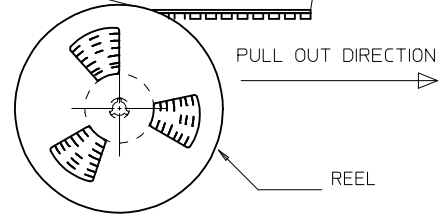
RECOMMENDED MATING PCB CONFIGURATION



| | | | | | | | | |
|--|--------------------|-----------------|--|---|--|--|------------------------|--|
| ADD GF DETAILS EC NO: S2010-0162 DRWN: TARUNGHAM 2009/09/02 CHKD: CGTAN 2009/08/28 APPR: SHLENI 2009/09/02 | DESCRIPTION REV | QUALITY SYMBOLS | GENERAL TOLERANCES (UNLESS SPECIFIED) | DIMENSION STYLE | SCALE | DESIGN UNITS | THIRD ANGLE PROJECTION | |
| | | ▼ = 0 ∇ = 0 | mm INCH 4 PLACES ± --- ± --- 3 PLACES ± --- ± --- 2 PLACES ± 0.2 ± --- 1 PLACE ± --- ± --- ANGULAR ± 2 ° | MM ONLY | NTS | METRIC | | |
| | | | DRAFT WHERE APPLICABLE MUST REMAIN WITHIN DIMENSIONS | DRAWN BY: VMANICKAM CHECKED BY: CCTEH APPROVED BY: SHLENI MATERIAL NO. | DATE: 2007/07/16 DATE: 2007/09/03 DATE: 2007/09/03 | TITLE: DDR3 SODIMM 204 CKTS, 4.0MM HEIGHT STANDARD ORIENTATION MOLEX INCORPORATED | | |
| | | A3 | | SEE TABLE | SIZE A3 | DOCUMENT NO. SD-78194-001 SHEET NO. 3 OF 5 | | |

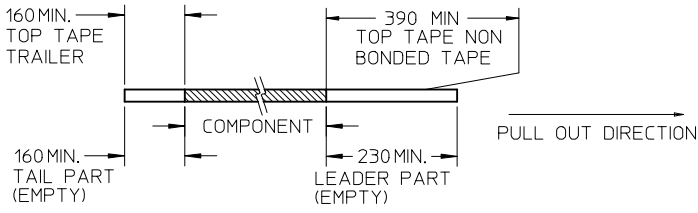


DETAIL 5

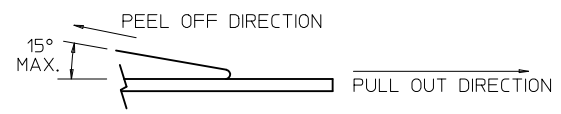


NOTES:

1. LEADER AND TRAILER TAPE



2. PEELING OFF FORCE OF THE TOP TAPE: 10 - 150gf AS PER EIA-481-B. (PEELING DIRECTION AS SHOWN IN FOLLOWING FIGURE)



- 3. TAPE AND REEL SPECIFICATION IS AS PER EIA-481.
- 4. TAPE AND REEL QUANTITY : 250 PCS/ REEL.
- 5. THE TAPE IS TREATED FOR ANTI-STATIC.

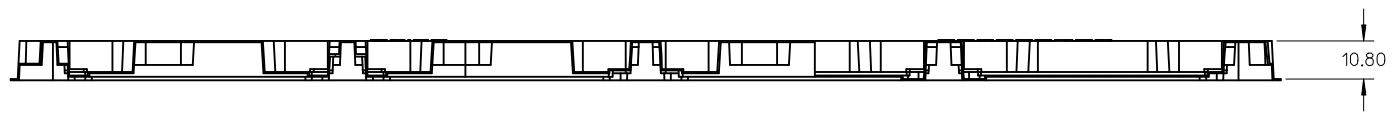
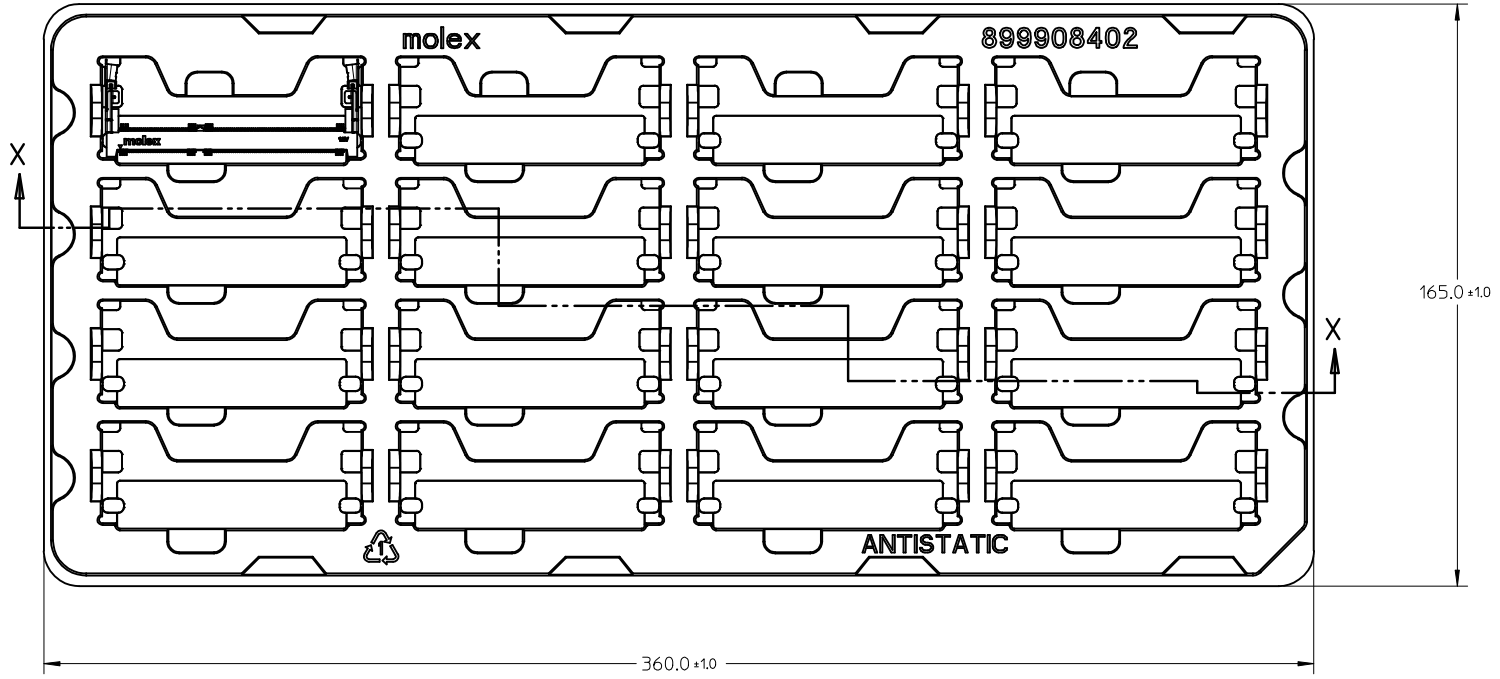
| | | |
|----------------|-------------------|------------|
| ADD GF DETAILS | EC NO: S2010-0162 | 2009/08/28 |
| | DRWN: TARUMGHAM | 2009/08/28 |
| | CHKD: CGTAN | 2009/09/02 |
| | APPR: SHLENI | |
| REV | A3 | |

| QUALITY SYMBOLS | DESCRIPTION |
|-----------------|-------------|
| ▽=0 | |
| ∇=0 | |

| GENERAL TOLERANCES (UNLESS SPECIFIED) | |
|--|-------------|
| | mm INCH |
| 4 PLACES | ± --- ± --- |
| 3 PLACES | ± --- ± --- |
| 2 PLACES | ± 0.2 ± --- |
| 1 PLACE | ± --- ± --- |
| ANGULAR ± 2 ° | |
| DRAFT WHERE APPLICABLE MUST REMAIN WITHIN DIMENSIONS | |

| DIMENSION STYLE | | SCALE | DESIGN UNITS | THIRD ANGLE PROJECTION |
|-----------------|---|---|--------------|------------------------|
| MM ONLY | | NTS | METRIC | ⊙ |
| DRAWN BY | DATE | TITLE | | |
| VMANICKAM | 2007/07/16 | DDR3 SODIMM 204 CKTS, 4.0MM HEIGHT STANDARD ORIENTATION | | |
| CHECKED BY | DATE | | | |
| CCTEH | 2007/09/03 | MOLEX INCORPORATED | | |
| APPROVED BY | DATE | | | |
| SHLENI | 2007/09/03 | DOCUMENT NO. | | SHEET NO. |
| MATERIAL NO. | | SD-78194-001 | | 4 OF 5 |
| SIZE | THIS DRAWING CONTAINS INFORMATION THAT IS PROPRIETARY TO MOLEX INCORPORATED AND SHOULD NOT BE USED WITHOUT WRITTEN PERMISSION | | | |
| A3 | | | | |

10 9 8 7 6 5 4 3 2 1



SECTION X-X

- NOTES:
 1. DRAFT ANGLE OF 3° UNLESS OTHERWISE SPECIFIED
 2. CAVITY QTY: 4X4=16

| | | | | | | | | |
|--|-------------------------------|--|------|--------------------|---|---|------------------------|--|
| ADD GF DETAILS EC NO: S2010-0162 DRWN: TARUMGHAM 2009/08/28 CHKD: CGTAN 2009/08/28 APPR: SHLENI 2009/09/02 | QUALITY SYMBOLS ▽=0 ◻=0 | GENERAL TOLERANCES (UNLESS SPECIFIED) | | DIMENSION STYLE | SCALE | DESIGN UNITS | THIRD ANGLE PROJECTION | |
| | | | | MM ONLY | NTS | METRIC | | |
| | | | | DRAWN BY | DATE | TITLE | | |
| | | | | CHECKED BY | DATE | DDR3 SODIMM 204 CKTS, 4.0MM HEIGHT STANDARD ORIENTATION | | |
| | | APPROVED BY | DATE | MOLEX INCORPORATED | | | | |
| | | ANGULAR ± 2 ° | | MATERIAL NO. | DOCUMENT NO. | | | |
| | | DRAFT WHERE APPLICABLE MUST REMAIN WITHIN DIMENSIONS | | SEE TABLE | SD-78194-001 | | SHEET NO. | |
| | | | | SIZE | THIS DRAWING CONTAINS INFORMATION THAT IS PROPRIETARY TO MOLEX INCORPORATED AND SHOULD NOT BE USED WITHOUT WRITTEN PERMISSION | | | |

9 8 7 6 5 4 3 2 1