



Chipsmall Limited consists of a professional team with an average of over 10 year of expertise in the distribution of electronic components. Based in Hongkong, we have already established firm and mutual-benefit business relationships with customers from,Europe,America and south Asia,supplying obsolete and hard-to-find components to meet their specific needs.

With the principle of “Quality Parts,Customers Priority,Honest Operation,and Considerate Service”,our business mainly focus on the distribution of electronic components. Line cards we deal with include Microchip,ALPS,ROHM,Xilinx,Pulse,ON,Everlight and Freescale. Main products comprise IC,Modules,Potentiometer,IC Socket,Relay,Connector.Our parts cover such applications as commercial,industrial, and automotives areas.

We are looking forward to setting up business relationship with you and hope to provide you with the best service and solution. Let us make a better world for our industry!



Contact us

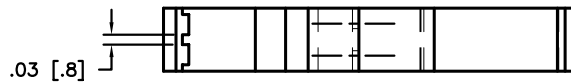
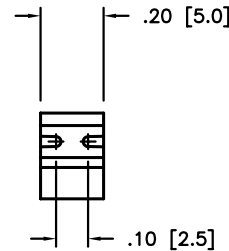
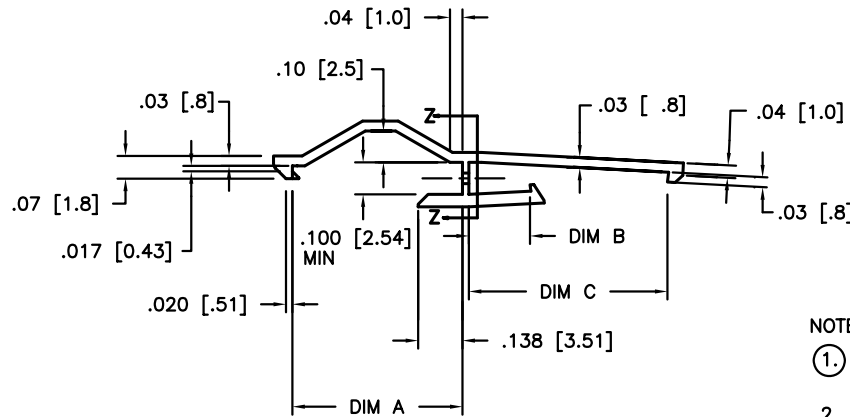
Tel: +86-755-8981 8866 Fax: +86-755-8427 6832

Email & Skype: info@chipsmall.com Web: www.chipsmall.com

Address: A1208, Overseas Decoration Building, #122 Zhenhua RD., Futian, Shenzhen, China



PRODUCT NUMBER	DIM A	DIM B	DIM C	APPLICATION	NOTES
78242-001	.53/13.5	.191/4.85	.62/15.7	MINI LATCH TO CLINCHER	
78242-001LF	.53/13.5	.191/4.85	.62/15.7	MINI LATCH TO CLINCHER	NOTE 3
78242-002	.53/13.5	.157/4.00	.55/14.0	MINI LATCH RECEPTACLE TO MINI LATCH PIN	
78242-002LF	.53/13.5	.157/4.00	.55/14.0	MINI LATCH RECEPTACLE TO MINI LATCH PIN	NOTE 3
78242-003	.59/14.9	.191/4.85	.620/15.7	CLINCHER RECEPTACLE TO CLINCHER PIN	
78242-003LF	.59/14.9	.191/4.85	.620/15.7	CLINCHER RECEPTACLE TO CLINCHER PIN	NOTE 3



NOTES:

1. MATERIAL: PBT, UNREINFORCED, FLAME RETARDANT PER UL94 V-0, COLOR: BLUE.
2. ALWAYS APPLY LATCH TO PIN CONNECTOR FIRST TO FACILITATE ASSEMBLY.
3. PART NUMBERS WITH AN LF SUFFIX MEET EUROPEAN UNION DIRECTIVES AND OTHER COUNTRY REGULATIONS AS DESCRIBED IN GS-22-008.
4. THIS PRODUCT IS NOT INTENDED TO BE EXPOSED TO MANUFACTURING SOLDERING PROCESSES.

mat'l. code				surface		tolerance		projection		product family	
SEE NOTE 1				ASME Y14.5		ASME Y14.5				BERGCON ACCESSORIES	
ltr	ecn no	dr	date	tolerances unless otherwise specified						title	
C	V40999	HTB	1994-06-18	angles	XX±0.1/XX±0.3			INCH/MM		LATCH FOR FLYING CONNECTION SINGLE ROW	
D	V41244	HTB	1994-08-24		XXX±0.005/XX±0.1			scale 2:1		dwg no	
E	V41721	MSC	1994-12-08	0°±2'	XXXX±0.020/XXX±0.051					sheet 1 of 1 size	
F	V50169	HTB	1995-01-20	dr	M.CLOUSER	1994-06-18				78242 A4	
G	V00492	RGD	2000-04-18	engr	T. HANNA	1994-06-18				type	
H	M06-0213	MHT	2006-06-05	chr	J.MURPHY	1994-06-18				Product Customer Drawing	
J	V06-1200	HTB	2006-12-18	appd	T.HANNA	1994-06-18					
sheet	revision	J									
index	sheet	1									