



Chipsmall Limited consists of a professional team with an average of over 10 year of expertise in the distribution of electronic components. Based in Hongkong, we have already established firm and mutual-benefit business relationships with customers from,Europe,America and south Asia,supplying obsolete and hard-to-find components to meet their specific needs.

With the principle of "Quality Parts,Customers Priority,Honest Operation,and Considerate Service",our business mainly focus on the distribution of electronic components. Line cards we deal with include Microchip,ALPS,ROHM,Xilinx,Pulse,ON,Everlight and Freescale. Main products comprise IC,Modules,Potentiometer,IC Socket,Relay,Connector.Our parts cover such applications as commercial,industrial, and automotives areas.

We are looking forward to setting up business relationship with you and hope to provide you with the best service and solution. Let us make a better world for our industry!



Contact us

Tel: +86-755-8981 8866 Fax: +86-755-8427 6832

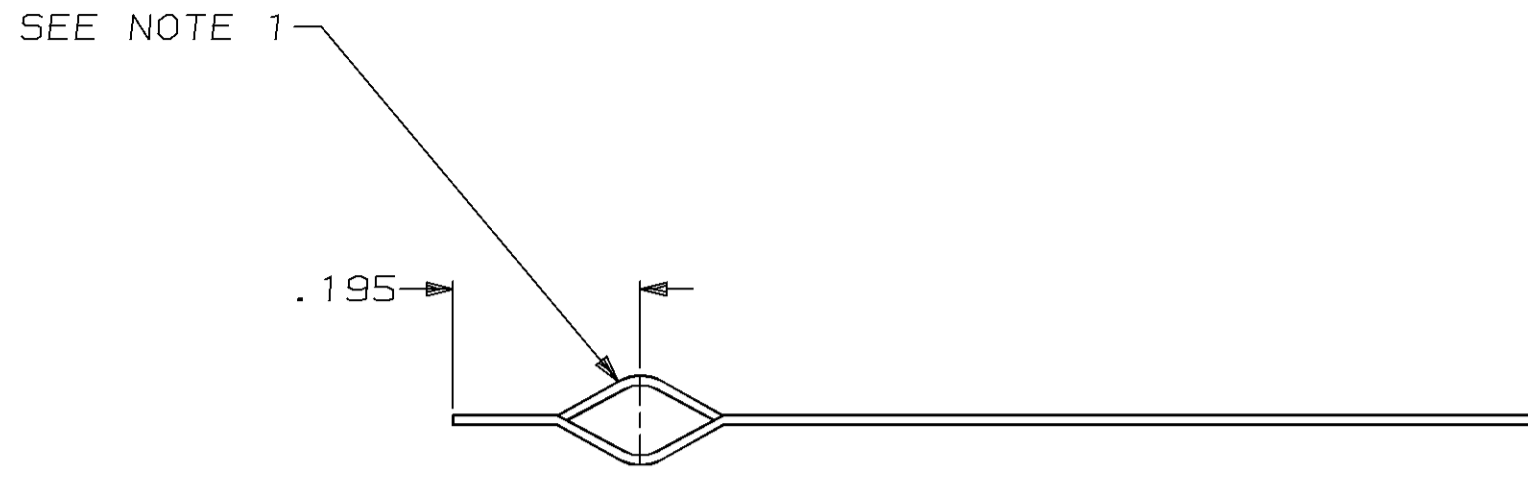
Email & Skype: info@chipsmall.com Web: www.chipsmall.com

Address: A1208, Overseas Decoration Building, #122 Zhenhua RD., Futian, Shenzhen, China

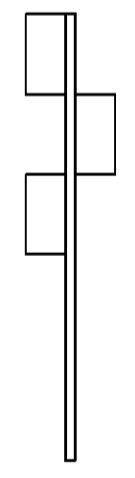
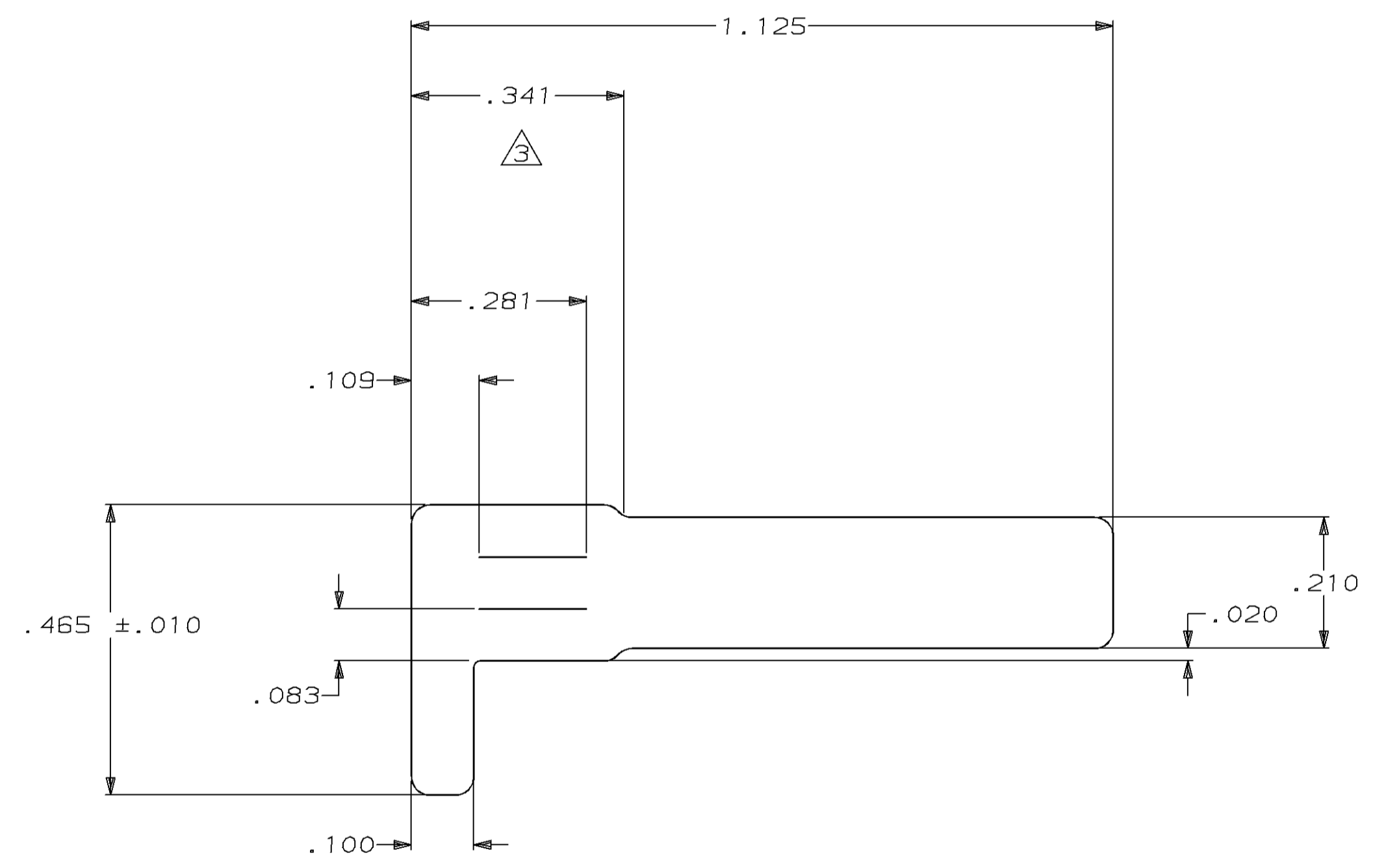


THIS DRAWING IS UNPUBLISHED. RELEASED FOR PUBLICATION, 19
 © COPYRIGHT 19 BY AMP INCORPORATED. ALL RIGHTS RESERVED.

LOC	DIST	REVISIONS			
P	LTR	DESCRIPTION	DATE	DWN	APVD
CM	52	A	REV PER EC 0730-0209-95	11-28-95	JH RS



- PART IS DESIGNED TOO PRESS FIT (BY HAND) ONTO A .093 PIN (AMP PART NO. 61137-1).
 - SOLDERABILITY SPECTIFICATION: PARTS SUPPLIED MUST MEET LATEST REVISION OF MIL-STD-202 METHOD 208, OR AMP SOLDERABILITY SPECTIFICATION 109-11-5.
- △ FROM INTENDED INTERSECTION.



794100-1
PART NUMBER

IN	MM	IN	MM
.109	2.77	-	-
.100	2.54	1.125	28.58
.093	2.36	.465	11.81
.083	2.11	.341	8.66
.020	0.51	.281	7.14
.010	0.25	.210	5.33
.005	0.13	.195	4.95
IN	MM	IN	MM

CONVERSION TABLE

METRIC

<small>THIS DRAWING IS A CONTROLLED DOCUMENT FOR AMP INCORPORATED. IT IS SUBJECT TO CHANGE AND THE CONTROLLING ENGINEERING ORGANIZATION SHOULD BE CONTACTED FOR THE LATEST REVISION.</small>		DWN B. LEWIS 8-30-95	AMP AMP Incorporated Harrisburg, PA 17105-3608
DIMENSIONS: INCHES		CHK R. SWING 8-30-95	
		APVD W. LONG 8-30-95	NAME PC-BOARD DISCONNECT TEST SWITCH
TOLERANCES UNLESS OTHERWISE SPECIFIED: 0 PLC ±- 1 PLC ±- 2 PLC ±- 3 PLC ±.005 4 PLC ±- ANGLES ±0°30' FINISH PRE-TIN		PRODUCT SPEC -	SIZE A2
MATERIAL PHOSPHOR BRONZE		APPLCATION SPEC -	CAGE CODE 00779
		WEIGHT -	DRAWING NO. ©=794100
		CUSTOMER DRAWING	SCALE 5:1
			SHEET 1 OF 1
			REV A