



Chipsmall Limited consists of a professional team with an average of over 10 year of expertise in the distribution of electronic components. Based in Hongkong, we have already established firm and mutual-benefit business relationships with customers from,Europe,America and south Asia,supplying obsolete and hard-to-find components to meet their specific needs.

With the principle of “Quality Parts,Customers Priority,Honest Operation,and Considerate Service”,our business mainly focus on the distribution of electronic components. Line cards we deal with include Microchip,ALPS,ROHM,Xilinx,Pulse,ON,Everlight and Freescale. Main products comprise IC,Modules,Potentiometer,IC Socket,Relay,Connector.Our parts cover such applications as commercial,industrial, and automotives areas.

We are looking forward to setting up business relationship with you and hope to provide you with the best service and solution. Let us make a better world for our industry!



Contact us

Tel: +86-755-8981 8866 Fax: +86-755-8427 6832

Email & Skype: info@chipsmall.com Web: www.chipsmall.com

Address: A1208, Overseas Decoration Building, #122 Zhenhua RD., Futian, Shenzhen, China



LOC	DIST	REVISIONS					
		P	LTR	DESCRIPTION	DATE	DWN	APVD
CM	00		G	REVISED PER 0G3B-0910-04	07APR05	KW	DC

D

C

B

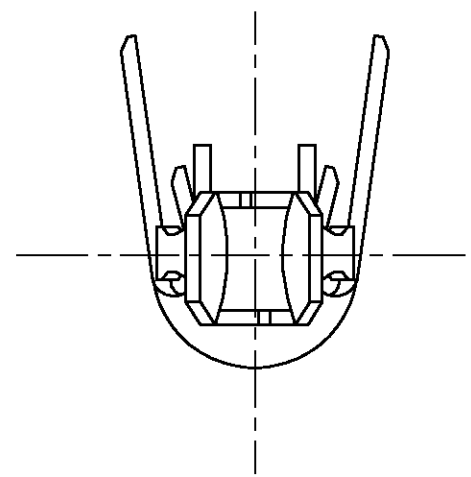
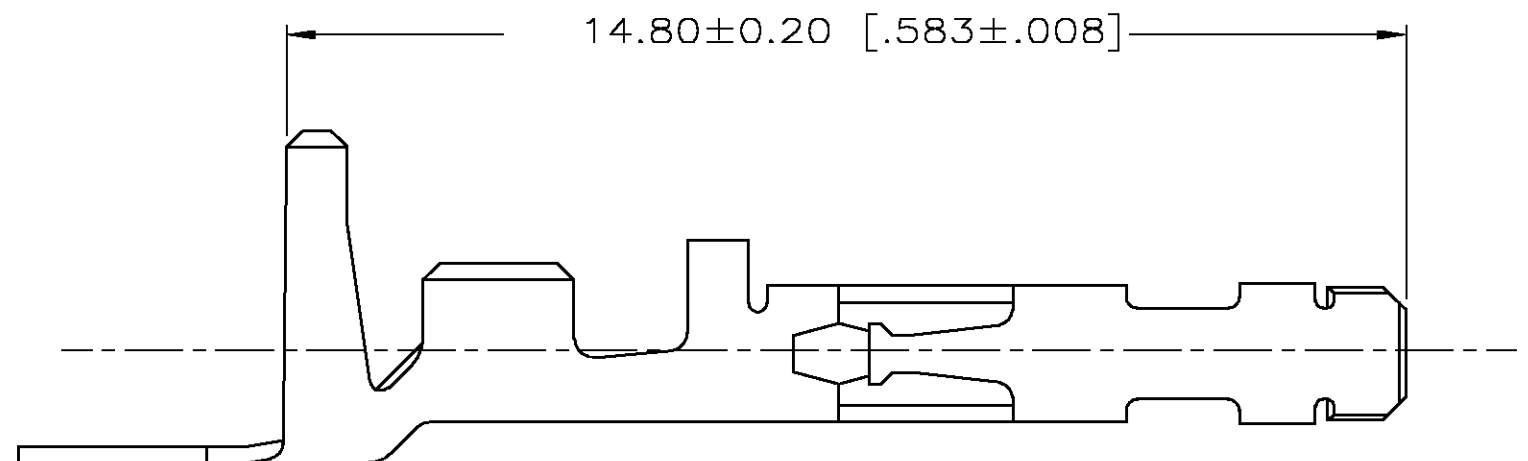
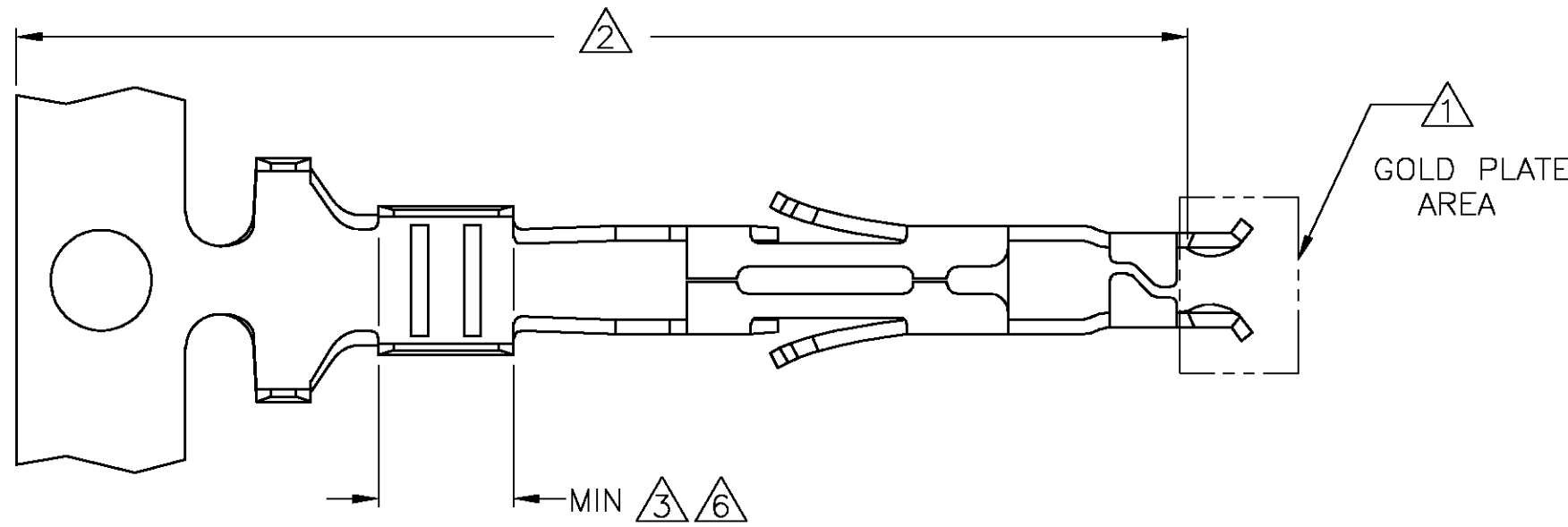
A

D

C

B

A



- 1 FINISH: 0.76μm MIN GOLD OVER 1.27μm MIN NICKEL REQUIRED ON INNER SURFACE, PERMITTED ON OUTER SURFACE.
- 2 FINISH: NICKEL BASE PLATE ON ALL SURFACES IN THIS AREA.
- 3 FINISH: 2.54μm MIN TIN-LEAD ON ALL SURFACES IN THIS AREA.
4. WIRE RANGE: 0.30-0.87mm² (22-18 AWG).
5. INSULATION RANGE: ø1.50-2.40 [ø.059-.094]
- 6 FINISH: 2.54μm MINIMUM TIN ON ALL SURFACES IN THIS AREA.

1-794141-3	1 2 6	0.22 [.009] PH BRZ	1-794138-3
794141-3	1 2 3	0.22 [.009] PH BRZ	794138-3
REFERENCE LOOSE PIECE	FINISH	MATERIAL	PART NUMBER

METRIC

THIS DRAWING IS A CONTROLLED DOCUMENT.

DIMENSIONS:
MM [INCHES]

TOLERANCES UNLESS
OTHERWISE SPECIFIED:

0 PLC ±

1 PLC ±

2 PLC ± 0.10 [.004]

3 PLC ±

4 PLC ±

ANGLES ± 0° 30'

FINISH

DWN
S. HOOVER
26-SEP-2002

CHK
D. COLEY
26-SEP-2002

APVD
D. COLEY
26-SEP-2002

PRODUCT SPEC
108-1646

APPLICATION SPEC
114-6067

WEIGHT

CUSTOMER DRAWING

tyco
Electronics

Tyco Electronics Corporation
Harrisburg, PA 17105-3608

NAME
CONTACT, SOCKET,
AMP-DUAC™ POWER CONNECTOR

SIZE
A2

CAGE CODE
00779

DRAWING NO
C=794138

RESTRICTED TO
—

SCALE
10:1

SHEET
1

OF
1

REV
G

794138