



Chipsmall Limited consists of a professional team with an average of over 10 year of expertise in the distribution of electronic components. Based in Hongkong, we have already established firm and mutual-benefit business relationships with customers from,Europe,America and south Asia,supplying obsolete and hard-to-find components to meet their specific needs.

With the principle of “Quality Parts,Customers Priority,Honest Operation,and Considerate Service”,our business mainly focus on the distribution of electronic components. Line cards we deal with include Microchip,ALPS,ROHM,Xilinx,Pulse,ON,Everlight and Freescale. Main products comprise IC,Modules,Potentiometer,IC Socket,Relay,Connector.Our parts cover such applications as commercial,industrial, and automotives areas.

We are looking forward to setting up business relationship with you and hope to provide you with the best service and solution. Let us make a better world for our industry!



Contact us

Tel: +86-755-8981 8866 Fax: +86-755-8427 6832

Email & Skype: info@chipsmall.com Web: www.chipsmall.com

Address: A1208, Overseas Decoration Building, #122 Zhenhua RD., Futian, Shenzhen, China



4

3

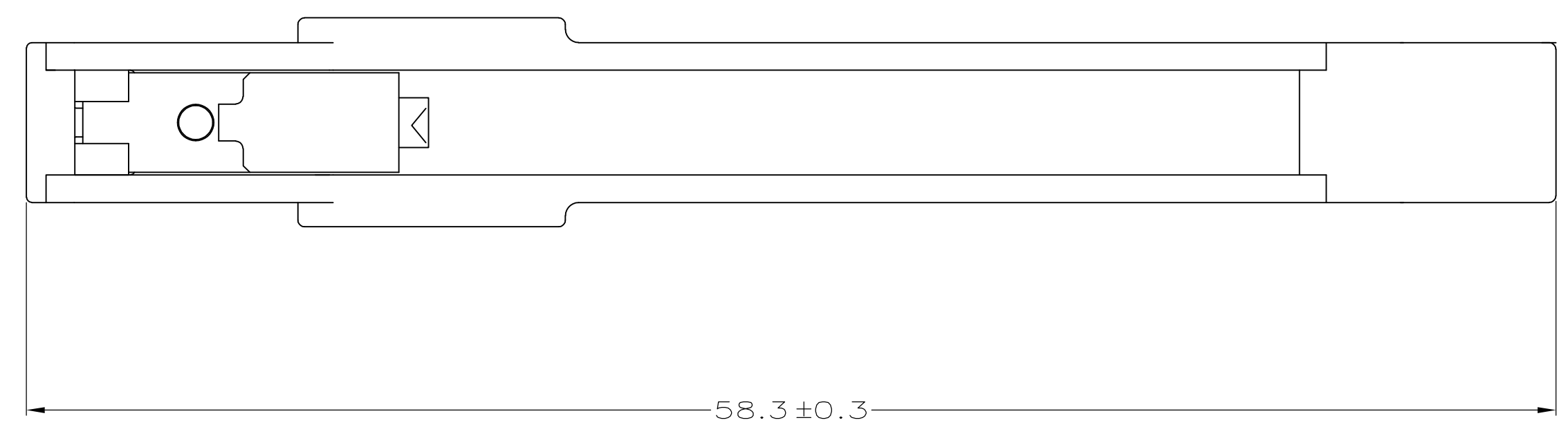
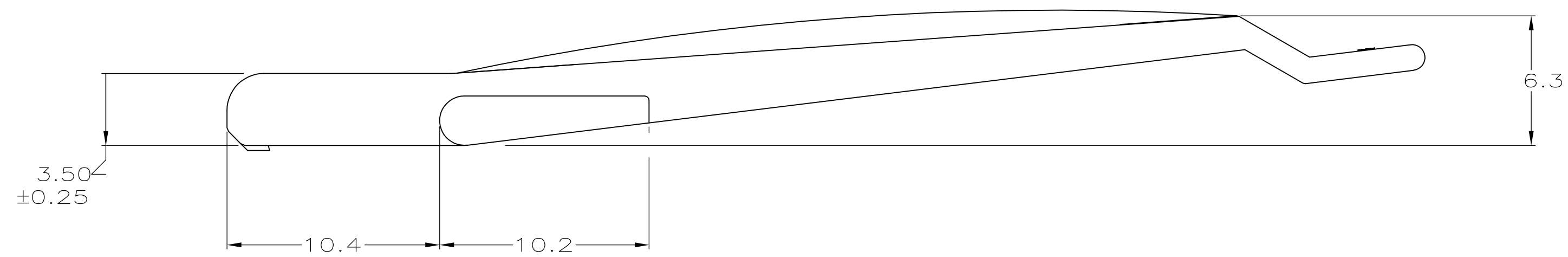
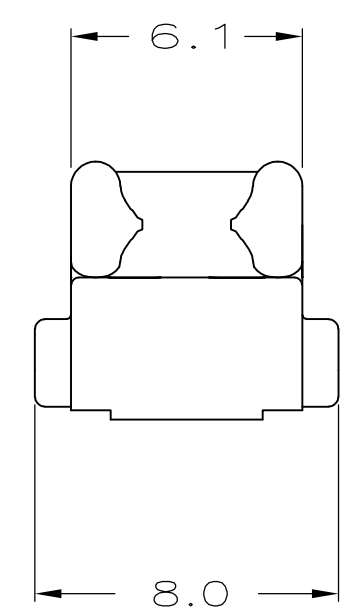
2

1

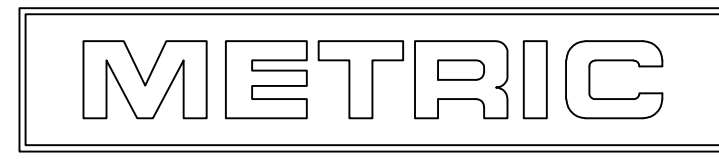
THIS DRAWING IS UNPUBLISHED. RELEASED FOR PUBLICATION .19
 (C) COPYRIGHT 19 BY AMP INCORPORATED. ALL RIGHTS RESERVED.

LOC		DIST		REVISIONS			
P	LTR	DESCRIPTION	DATE	DWN	APVD		
AG	0						
	01	REVISED ECR-10-006444	39MAR10	AZ	SY		

1. USED IN AMP-DUAC/PL™ RECEPTACLE HOUSINGS. ONE REQUIRED PER HOUSING.
 2. INSTALL LATCH ASSEMBLY AFTER CUSTOMER SUPPLIED BACKSHELL. (USE OF BACKSHELL IS REQUIRED).
 3. LATCH ASSEMBLY AVAILABLE WITH STANDARD LEVER ARM, 794150-1.
- ⚠ MATERIAL: LATCH ARM - PBT, GLASS REINFORCED
 COLOR - NATURAL
 SPRING - STAINLESS STEEL.



794149-1
 PART NUMBER



THIS DRAWING IS A CONTROLLED DOCUMENT.		DWN K. WHITAKER 8-15-97	AMP Incorporated Harrisburg, PA 17105-3608	
DIMENSIONS: mm		CHK R. SWING 8-15-97	NAME LATCH ASSEMBLY, EXTENDED, AMP-DUAC/PL™ POWER CONNECTOR	
TOLERANCES UNLESS OTHERWISE SPECIFIED:		APVD E. BEILES 8-15-97	PRODUCT SPEC 108-1646	
0 PLC ±-		APPLICATION SPEC 114-6067		
1 PLC ±0.2		SIZE A2		
2 PLC ±0.13		CAGE CODE 00779		
3 PLC ±-		DRAWING NO C-794149		
4 PLC ±-		RESTRICTED TO -		
ANGLES ±1°		WEIGHT -		
MATERIAL ⚠		CUSTOMER DRAWING		
FINISH ⚠		SCALE 5:1 SHEET 1 OF 1 REV 01		