



Chipsmall Limited consists of a professional team with an average of over 10 year of expertise in the distribution of electronic components. Based in Hongkong, we have already established firm and mutual-benefit business relationships with customers from,Europe,America and south Asia,supplying obsolete and hard-to-find components to meet their specific needs.

With the principle of “Quality Parts,Customers Priority,Honest Operation,and Considerate Service”,our business mainly focus on the distribution of electronic components. Line cards we deal with include Microchip,ALPS,ROHM,Xilinx,Pulse,ON,Everlight and Freescale. Main products comprise IC,Modules,Potentiometer,IC Socket,Relay,Connector.Our parts cover such applications as commercial,industrial, and automotives areas.

We are looking forward to setting up business relationship with you and hope to provide you with the best service and solution. Let us make a better world for our industry!



Contact us

Tel: +86-755-8981 8866 Fax: +86-755-8427 6832

Email & Skype: info@chipsmall.com Web: www.chipsmall.com

Address: A1208, Overseas Decoration Building, #122 Zhenhua RD., Futian, Shenzhen, China



LOC	DIST	REVISIONS				
CM	0	P	LTR	DESCRIPTION	DATE	DWN
		E		REVISED PER 0G3B-0237-05	9/20/05	SS

- 1

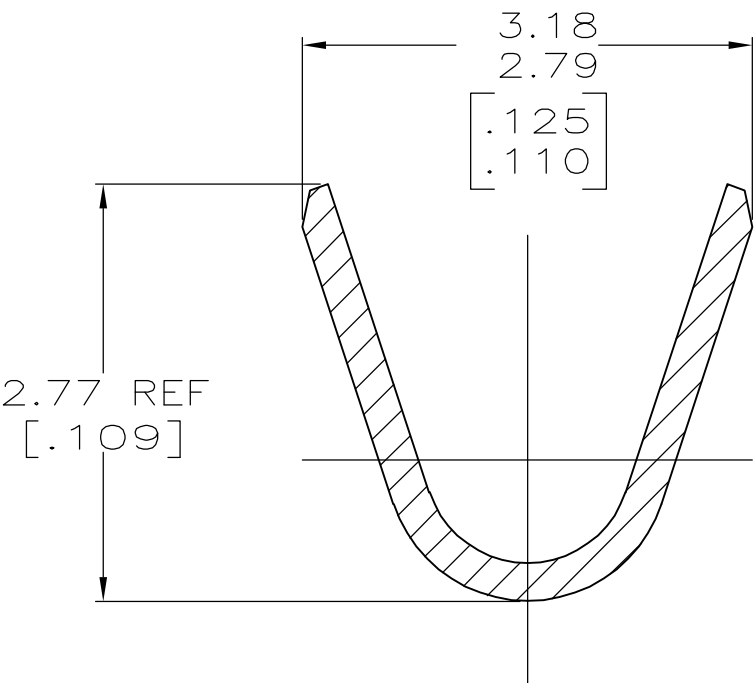
0.00076 [.000030] MIN GOLD PER AMP SPEC 112-162-3 IN LOCALIZED GOLD PLATE AREA AND 0.00254-0.00635 [.000100-.000250] BRIGHT TIN-LEAD PER AMP SPEC 112-26-1 IN LOCALIZED TIN-LEAD PLATE AREA OVER 0.00127 [.000050] MIN NICKEL PER AMP SPEC 112-25-2.
2.

WIRE RANGE: 0.5-1.4MM² (20-16 AWG).
3.

INSULATION RANGE: 2.01-3.20[.079-.126] DIA.
4.

DIMENSIONS IN BRACKETS ARE IN INCHES.
- 5

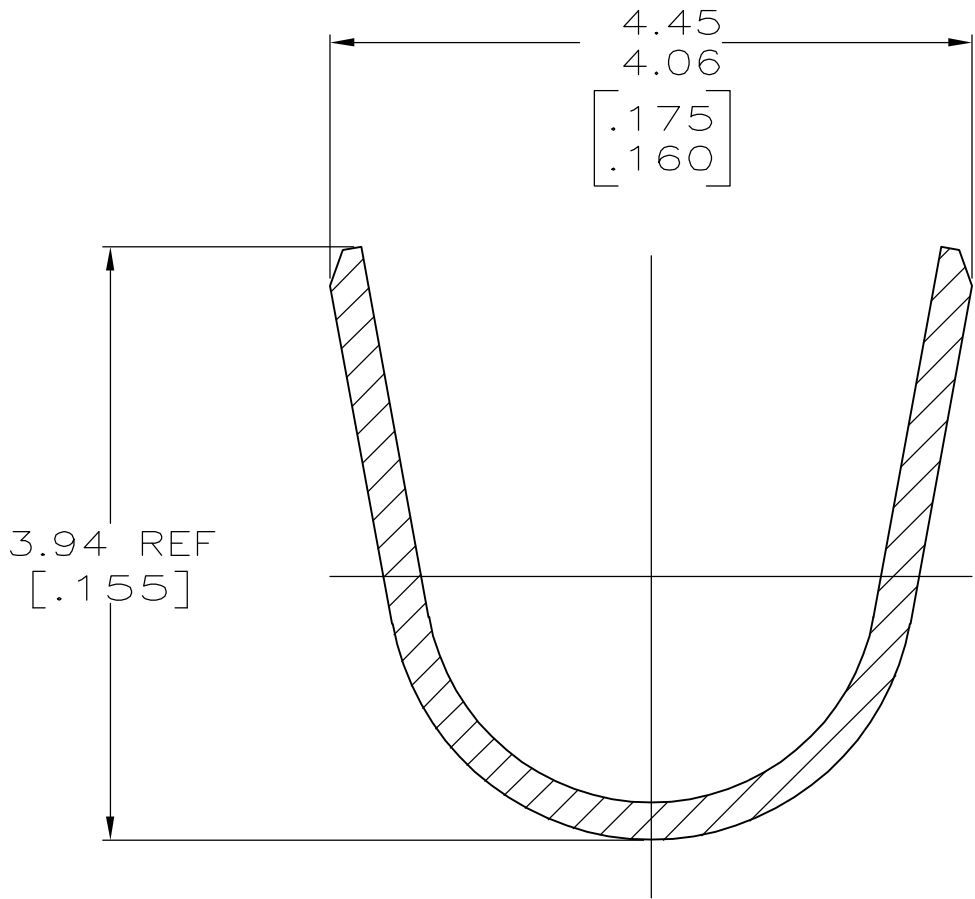
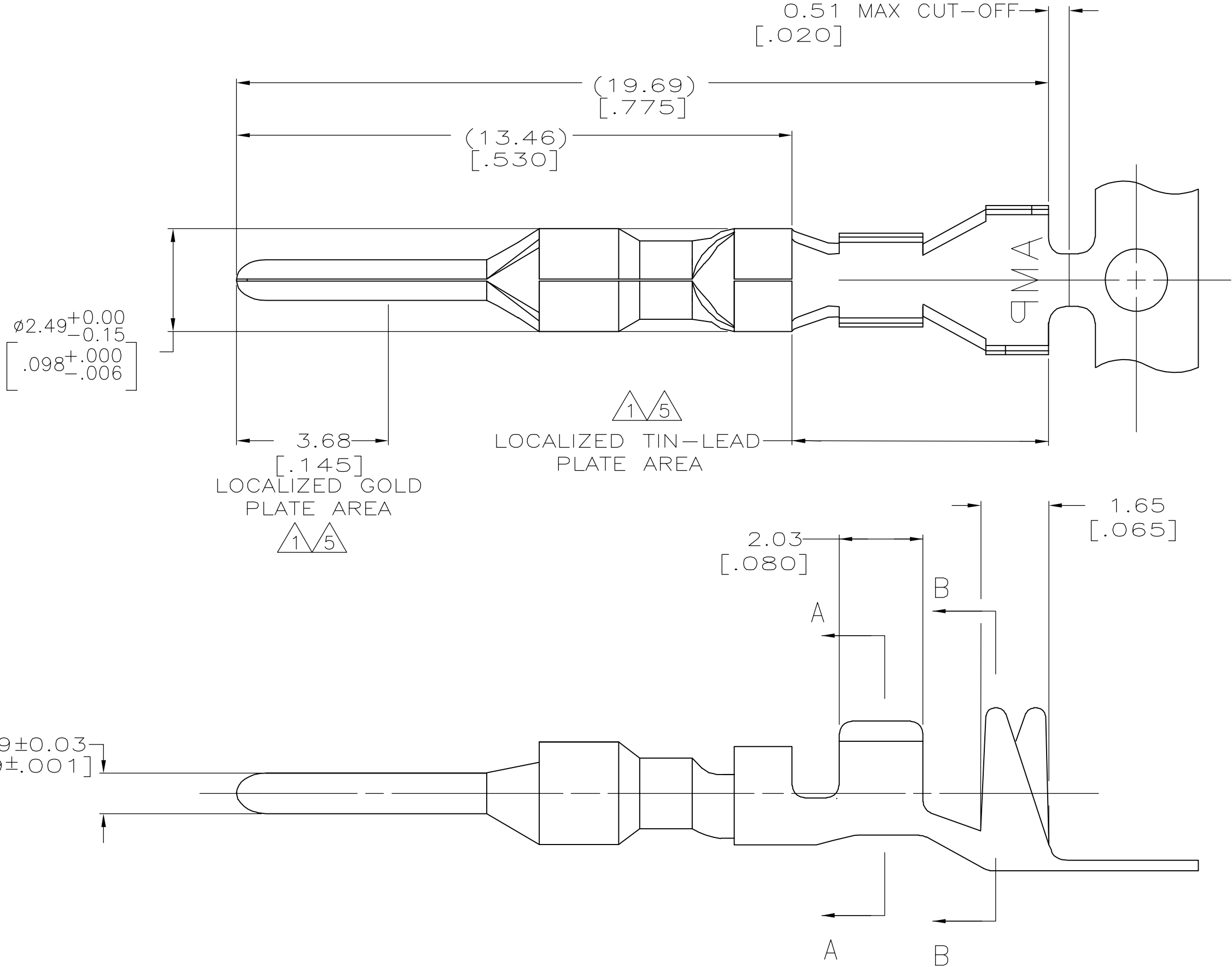
0.00076 [.000030] MIN GOLD PER AMP SPEC 112-162-3 IN LOCALIZED GOLD PLATE AREA AND 0.00254-0.00635 [.000100-.000250] MATTE TIN PER AMP SPEC 112-16-3 IN LOCALIZED TIN PLATE AREA OVER 0.00127 [.000050] MIN NICKEL PER AMP SPEC 112-25-2.



SECTION A-A
SCALE 20:1

5	0.25[.010] BRASS	1-794222-0
1	0.25[.010] BRASS	794222-3
PRE-TIN	0.25[.010] BRASS	794222-1
FINISH	MATERIAL	PART NUMBER

THIS DRAWING IS A CONTROLLED DOCUMENT.		DWN R. VESTAL 2-20-98		<div><div><div>tyco</div><div>Electronics</div></div><div>Tyco Electronics Corporation Harrisburg, PA 17105-3608</div></div>					
DIMENSIONS: mm [INCHES]		CHK R. SWING 2-20-98							
	TOLERANCES UNLESS OTHERWISE SPECIFIED:		APVD —	NAME PIN, MINI UNIVERSAL MATE-N-LOK 2 —					
	0 PLC ± —		PRODUCT SPEC —						
	1 PLC ± —		APPLICATION SPEC —						
	2 PLC ± —		—	SIZE	CAGE CODE	DRAWING NO	RESTRICTED TO		
	3 PLC ± 0.15 [.006]		—	A2	00779	C=794222	—		
4 PLC ± —		WEIGHT —							
MATERIAL SEE TABLE	FINISH SEE TABLE		CUSTOMER DRAWING				SCALE 10:1	SHEET 1 of 1	REV E



SECTION B-B
SCALE 20:1