



Chipsmall Limited consists of a professional team with an average of over 10 year of expertise in the distribution of electronic components. Based in Hongkong, we have already established firm and mutual-benefit business relationships with customers from,Europe,America and south Asia,supplying obsolete and hard-to-find components to meet their specific needs.

With the principle of “Quality Parts,Customers Priority,Honest Operation,and Considerate Service”,our business mainly focus on the distribution of electronic components. Line cards we deal with include Microchip,ALPS,ROHM,Xilinx,Pulse,ON,Everlight and Freescale. Main products comprise IC,Modules,Potentiometer,IC Socket,Relay,Connector.Our parts cover such applications as commercial,industrial, and automotives areas.

We are looking forward to setting up business relationship with you and hope to provide you with the best service and solution. Let us make a better world for our industry!



Contact us

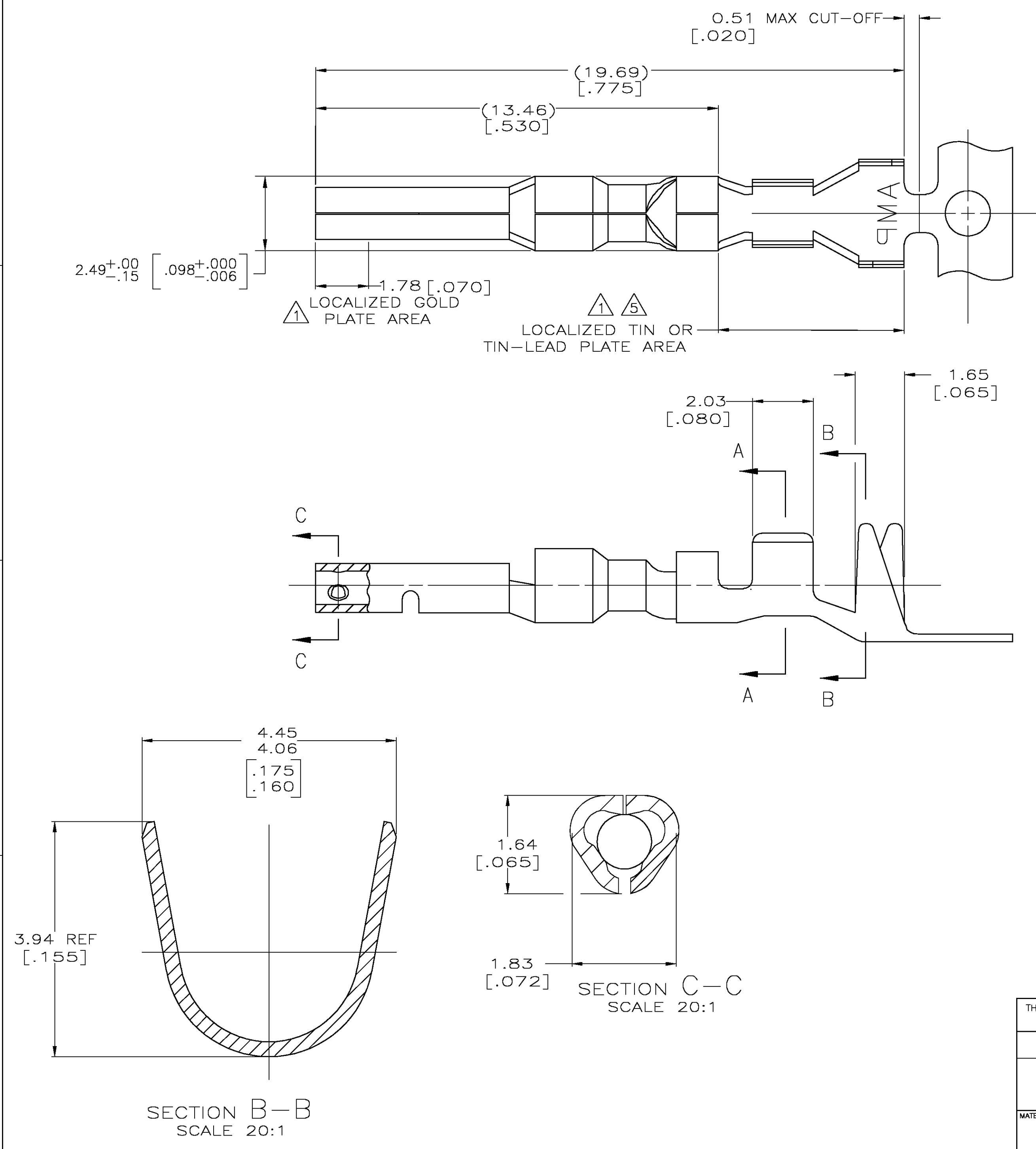
Tel: +86-755-8981 8866 Fax: +86-755-8427 6832

Email & Skype: info@chipsmall.com Web: www.chipsmall.com

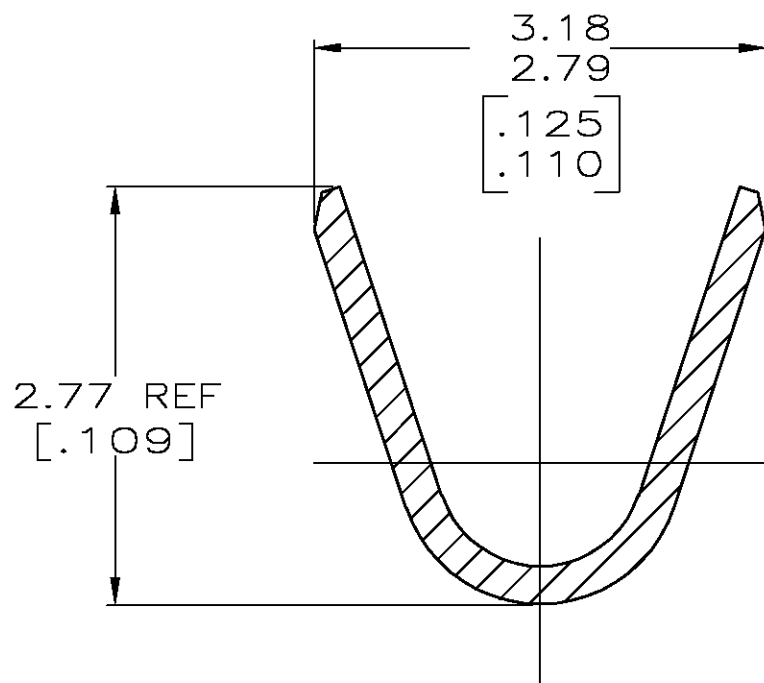
Address: A1208, Overseas Decoration Building, #122 Zhenhua RD., Futian, Shenzhen, China



LOC	DIST	REVISIONS					
		P	LTR	DESCRIPTION	DATE	DWN	APVD
CM	00		G	REVISED PER EC 0G3B-0387-03	21MAY03	SC	CJ




1. 0.00076 [.000030] MIN GOLD IN LOCALIZED GOLD PLATE AREA AND 0.00254-0.00635 [.000100-.000250] BRIGHT TIN-LEAD IN LOCALIZED TIN-LEAD PLATE AREA OVER 0.00127 [.000050] MIN NICKEL.
2. WIRE RANGE: 0.5-1.4MM² (20-16 AWG).
3. INSULATION RANGE: 2.01-3.20[.079-.126] DIA.
4. DIMENSIONS IN BRACKETS ARE IN INCHES.
5. 0.00076 [.000030] MIN GOLD IN LOCALIZED GOLD PLATE AREA AND 0.00254-0.00635 [.000100-.000250] BRIGHT TIN IN LOCALIZED TIN PLATE AREA OVER 0.00127 [.000050] MIN NICKEL.



SECTION A-A
SCALE 20:1

5	0.25[.010] BRASS	1-794223-0
1	0.25[.010] BRASS	794223-3
PRE-TIN	0.25[.010] BRASS	794223-1

THIS DRAWING IS A CONTROLLED DOCUMENT.		DWN S. CARPENTER 21MAY2003		<div>tyco Electronics</div> <div>Tyco Electronics Corporation Harrisburg, PA 17105</div>				
DIMENSIONS: INCHES		CHK C. JONES 21MAY2003						
	TOLERANCES UNLESS OTHERWISE SPECIFIED: 0 PLC ± 1 PLC ± 2 PLC ± 3 PLC ± 0.15 [.006] 4 PLC ± ANGLES ± FINISH		APVD C. JONES 21MAY2003	NAME SOCKET, MINI UNIVERSAL MATE-N-LOK™ 2				
			PRODUCT SPEC					
			APPLICATION SPEC	SIZE	CAGE CODE	DRAWING NO	RESTRICTED TO	
			MATERIAL SEE TABLE	SEE TABLE	WEIGHT	A2	00779	C-794223
CUSTOMER DRAWING			SCALE	10:1	SHEET	1 OF 1	REV	G