



Chipsmall Limited consists of a professional team with an average of over 10 year of expertise in the distribution of electronic components. Based in Hongkong, we have already established firm and mutual-benefit business relationships with customers from,Europe,America and south Asia,supplying obsolete and hard-to-find components to meet their specific needs.

With the principle of “Quality Parts,Customers Priority,Honest Operation,and Considerate Service”,our business mainly focus on the distribution of electronic components. Line cards we deal with include Microchip,ALPS,ROHM,Xilinx,Pulse,ON,Everlight and Freescale. Main products comprise IC,Modules,Potentiometer,IC Socket,Relay,Connector.Our parts cover such applications as commercial,industrial, and automotives areas.

We are looking forward to setting up business relationship with you and hope to provide you with the best service and solution. Let us make a better world for our industry!



## Contact us

Tel: +86-755-8981 8866 Fax: +86-755-8427 6832

Email & Skype: [info@chipsmall.com](mailto:info@chipsmall.com) Web: [www.chipsmall.com](http://www.chipsmall.com)

Address: A1208, Overseas Decoration Building, #122 Zhenhua RD., Futian, Shenzhen, China



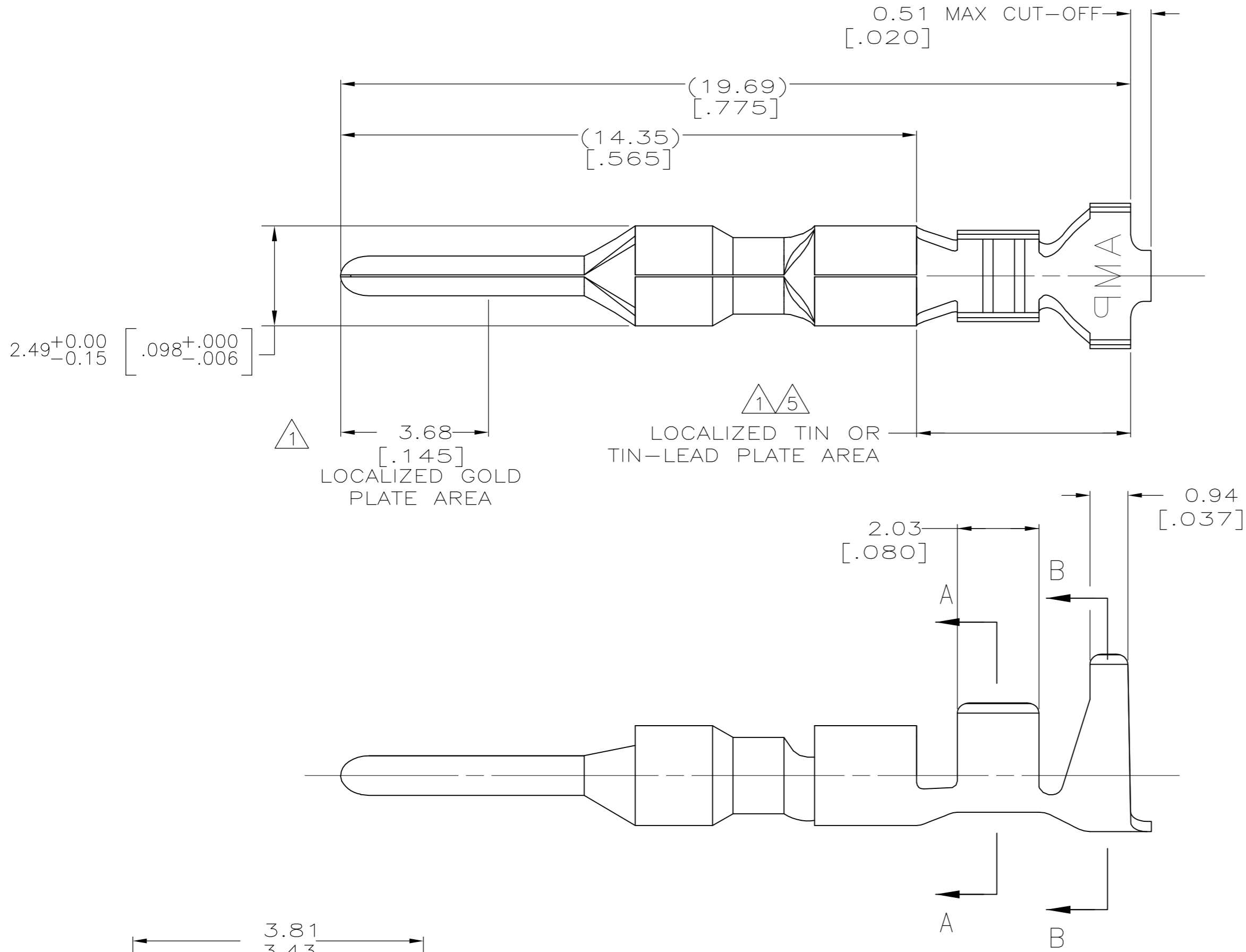
LOC	DIST	REVISIONS					
		P	LTR	DESCRIPTION	DATE	DWN	APVD
CM	00		E1	REVISED PER ECO-11-004917	11MAR11	RK	HMR

D

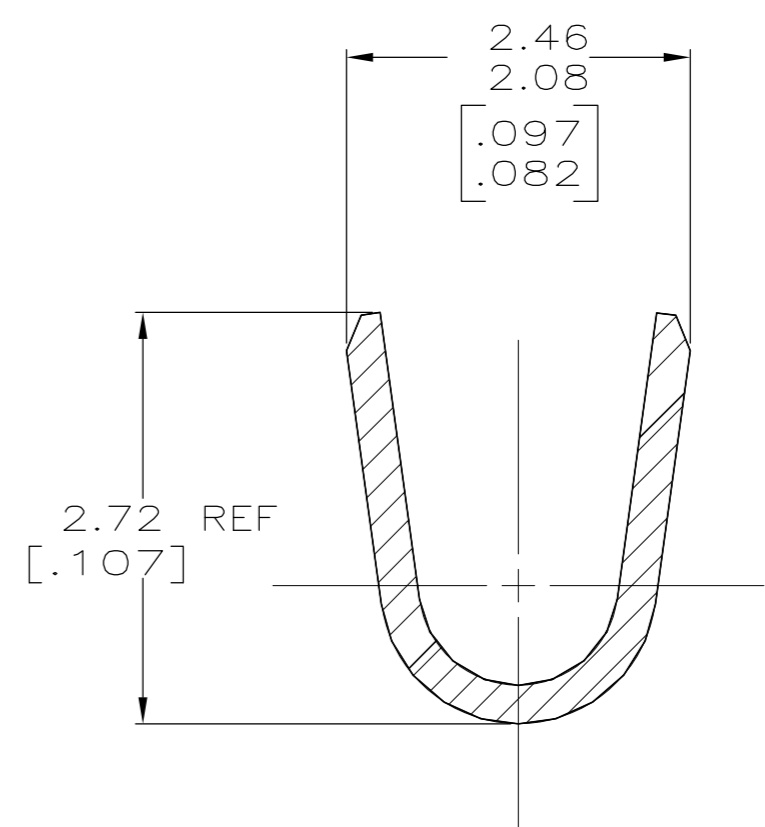
C

B

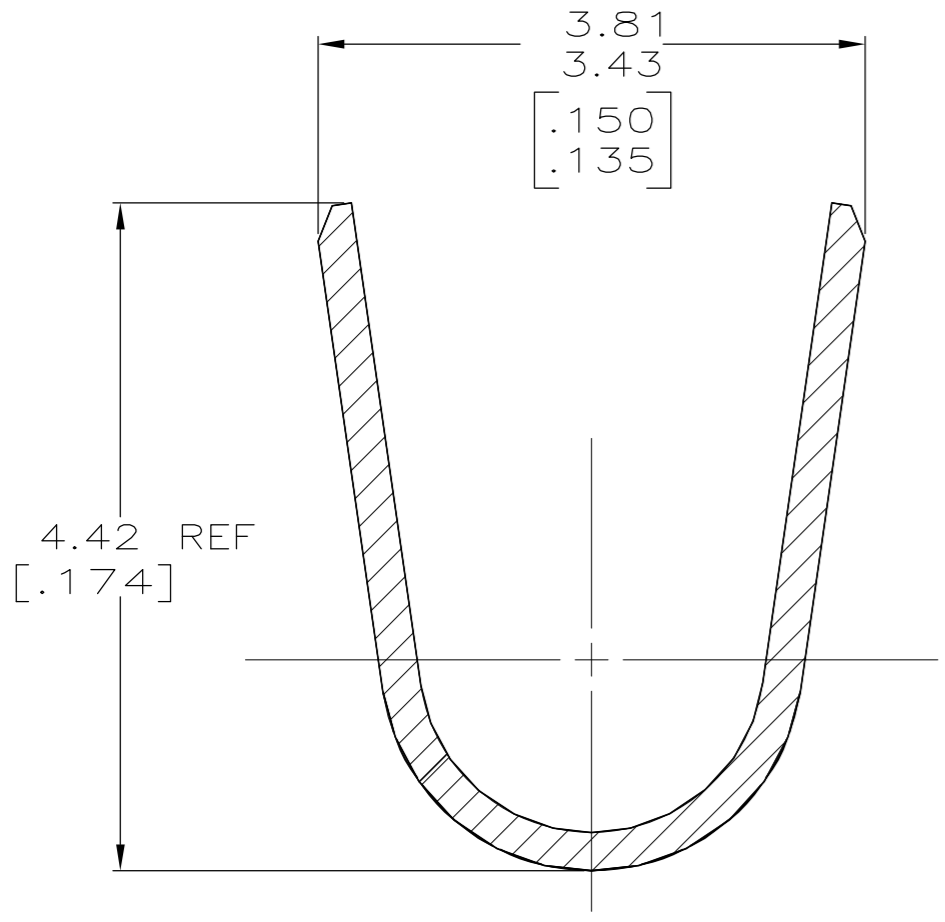
A



1. 0.00076 [.000030] MIN GOLD IN LOCALIZED GOLD PLATE AREA AND 0.00254 [.000100] MIN BRIGHT TIN-LEAD IN LOCALIZED TIN-LEAD PLATE AREA OVER 0.0013 [.000050] MIN NICKEL.
2. WIRE RANGE: 0.3 – 0.9MM<sup>2</sup> (22–18 AWG).
3. INSULATION RANGE: 1.50–2.79[.059–.110] DIA.
4. DIMENSIONS IN BRACKETS ARE IN INCHES.
5. 0.00076 [.000030] MIN GOLD IN LOCALIZED GOLD PLATE AREA AND 0.00254 [.000100] MIN BRIGHT TIN IN LOCALIZED TIN PLATE AREA OVER 0.0013 [.000050] MIN NICKEL.


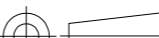


SECTION A—A  
SCALE 20:1



SECTION B—B  
SCALE 20:1

GOLD 5	0.25[.010] BRASS	1–794228–0
GOLD 1	0.25[.010] BRASS	794228–3
PRE–TIN	0.25[.010] BRASS	794228–1
FINISH	MATERIAL	PART NUMBER

THIS DRAWING IS A CONTROLLED DOCUMENT.			DWN S. CARPENTER 11AUG2003		 TE Connectivity								
DIMENSIONS: INCHES			CHK C. JONES 11AUG2003										
		TOLERANCES UNLESS OTHERWISE SPECIFIED:  0 PLC ± 1 PLC ± 2 PLC ± 3 PLC ± 0.15 [.006] 4 PLC ± ANGLES ±		APVD C. JONES 11AUG2003		NAME  PIN, LOOSE PIECE, MINI UNIVERSAL MATE–N–LOK 2							
				PRODUCT SPEC									
				MATERIAL SEE TABLE		FINISH SEE TABLE		APPLICATION SPEC		SIZE A2		CAGE CODE 00779	
CUSTOMER DRAWING						SCALE 10:1		SHEET 1 of 1		REV E1			

794228

B

A