



Chipsmall Limited consists of a professional team with an average of over 10 year of expertise in the distribution of electronic components. Based in Hongkong, we have already established firm and mutual-benefit business relationships with customers from,Europe,America and south Asia,supplying obsolete and hard-to-find components to meet their specific needs.

With the principle of “Quality Parts,Customers Priority,Honest Operation,and Considerate Service”,our business mainly focus on the distribution of electronic components. Line cards we deal with include Microchip,ALPS,ROHM,Xilinx,Pulse,ON,Everlight and Freescale. Main products comprise IC,Modules,Potentiometer,IC Socket,Relay,Connector.Our parts cover such applications as commercial,industrial, and automotives areas.

We are looking forward to setting up business relationship with you and hope to provide you with the best service and solution. Let us make a better world for our industry!



## Contact us

Tel: +86-755-8981 8866 Fax: +86-755-8427 6832

Email & Skype: [info@chipsmall.com](mailto:info@chipsmall.com) Web: [www.chipsmall.com](http://www.chipsmall.com)

Address: A1208, Overseas Decoration Building, #122 Zhenhua RD., Futian, Shenzhen, China



THIS DRAWING IS UNPUBLISHED.

RELEASED FOR PUBLICATION

.19

©

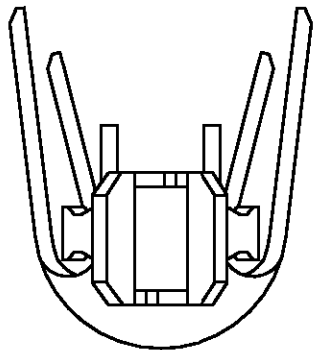
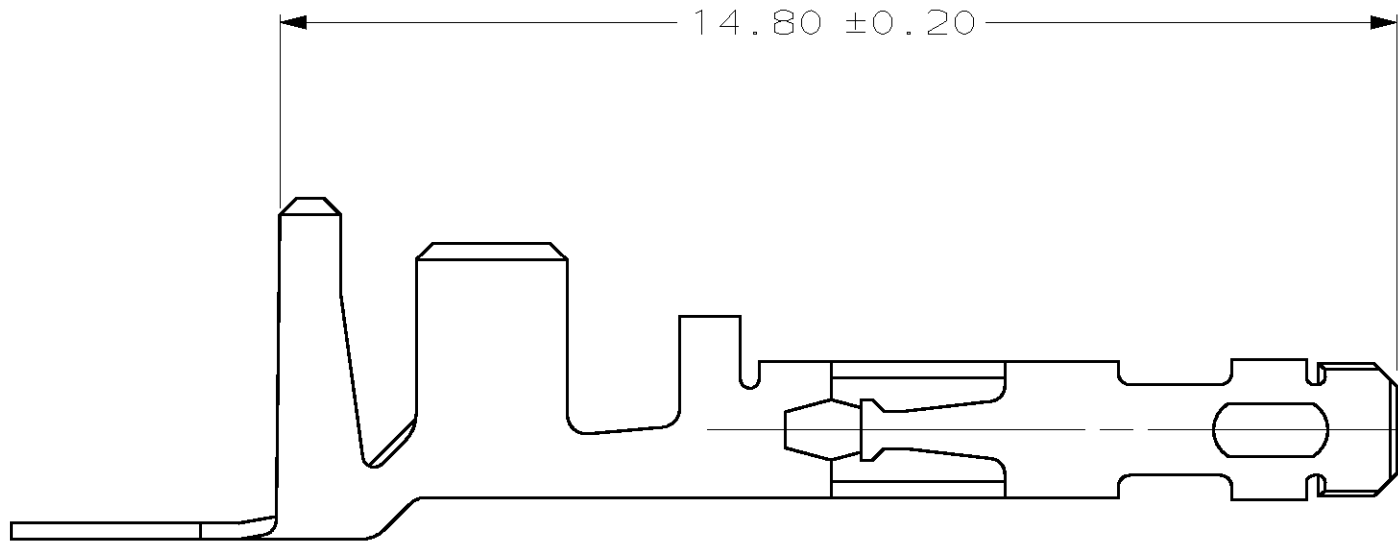
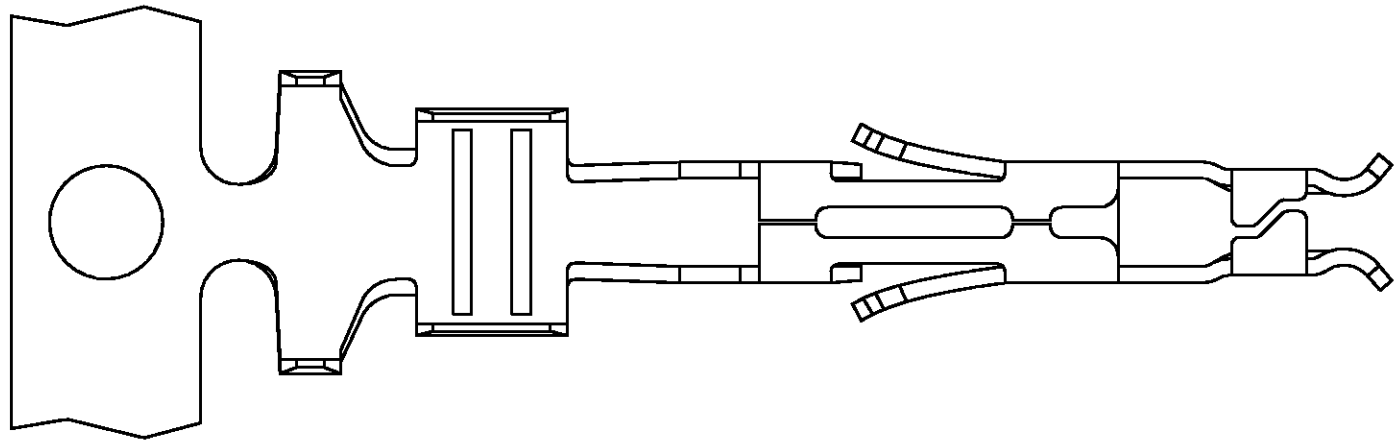
 COPYRIGHT 19

BY AMP INCORPORATED. ALL RIGHTS RESERVED.

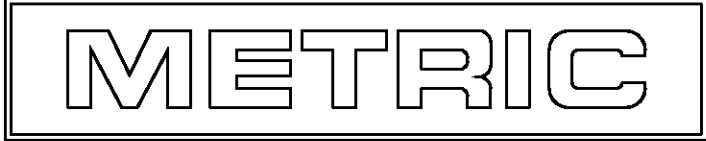
LOC	DIST	REVISIONS					
CM	53	P	LTR	DESCRIPTION	DATE	DWN	APVD
			C	REVISED PER EC 0G3B-0290-00	12-JUN-00	KW	SR

- 1

APPLICATOR TOOL: 680350-3.
2. CONTACT EXTRACTION TOOL: 188688-1.
3. WIRE RANGE: (2)0.8-0.9mm<sup>2</sup> (2X18 AWG) OR (1)1.2mm<sup>2</sup> (1x16 AWG).
4. INSULATION RANGE: 3.3 DIA MAX. FOR 2X18 AWG AND 3.0 DIA MAX FOR 1X16 AWG.



794421-1	PRE-TIN	0.22 PH BRZ	794418-1
LOOSE PIECE (REF)	FINISH	MATERIAL	PART NO



THIS DRAWING IS A CONTROLLED DOCUMENT.		DWN R. VESTAL 9-02-97	<div><div>AMP</div><div>AMP Incorporated Harrisburg, PA 17105-3608</div></div>			
DIMENSIONS: mm		CHK R. SWING 9-02-97				
	TOLERANCES UNLESS OTHERWISE SPECIFIED:		NAME			
			CONTACT, SOCKET, AMP-DUAC™ POWER CONNECTOR			
MATERIAL	FINISH		APPLICATION SPEC			
			114-6067 1			
SEE TABLE	SEE TABLE		SIZE	CAGE CODE	DRAWING NO	RESTRICTED TO
			A2	00779	C-794418	-
CUSTOMER DRAWING			SCALE	10:1	SHEET	1 OF 1
			REV C			