



Chipsmall Limited consists of a professional team with an average of over 10 year of expertise in the distribution of electronic components. Based in Hongkong, we have already established firm and mutual-benefit business relationships with customers from,Europe,America and south Asia,supplying obsolete and hard-to-find components to meet their specific needs.

With the principle of “Quality Parts,Customers Priority,Honest Operation,and Considerate Service”,our business mainly focus on the distribution of electronic components. Line cards we deal with include Microchip,ALPS,ROHM,Xilinx,Pulse,ON,Everlight and Freescale. Main products comprise IC,Modules,Potentiometer,IC Socket,Relay,Connector.Our parts cover such applications as commercial,industrial, and automotives areas.

We are looking forward to setting up business relationship with you and hope to provide you with the best service and solution. Let us make a better world for our industry!



Contact us

Tel: +86-755-8981 8866 Fax: +86-755-8427 6832

Email & Skype: info@chipsmall.com Web: www.chipsmall.com

Address: A1208, Overseas Decoration Building, #122 Zhenhua RD., Futian, Shenzhen, China



D

C

B

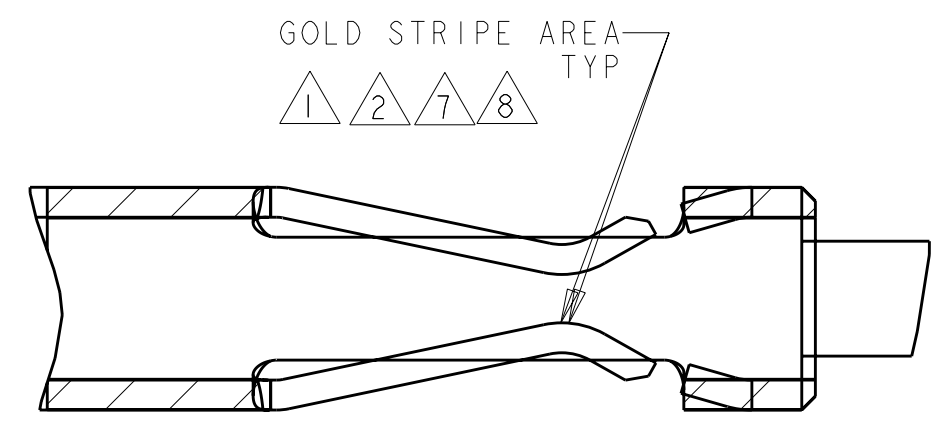
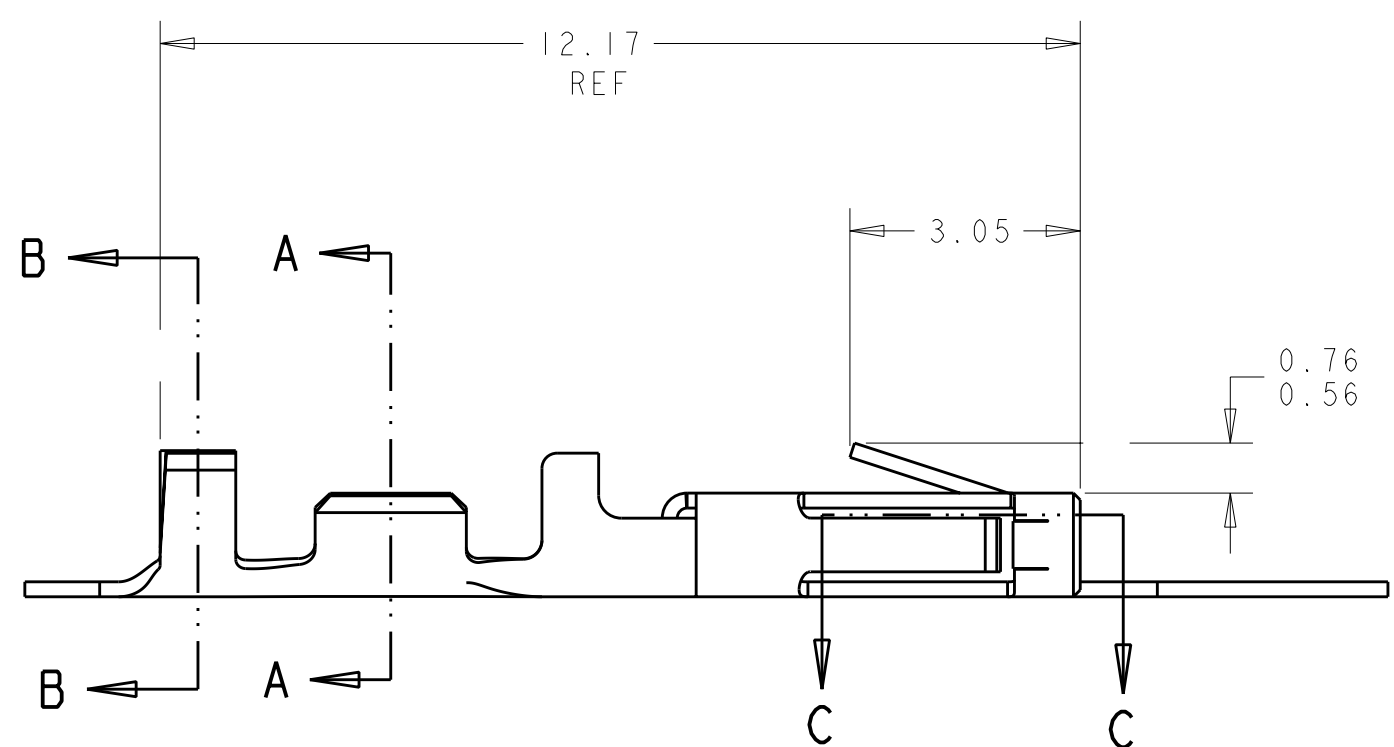
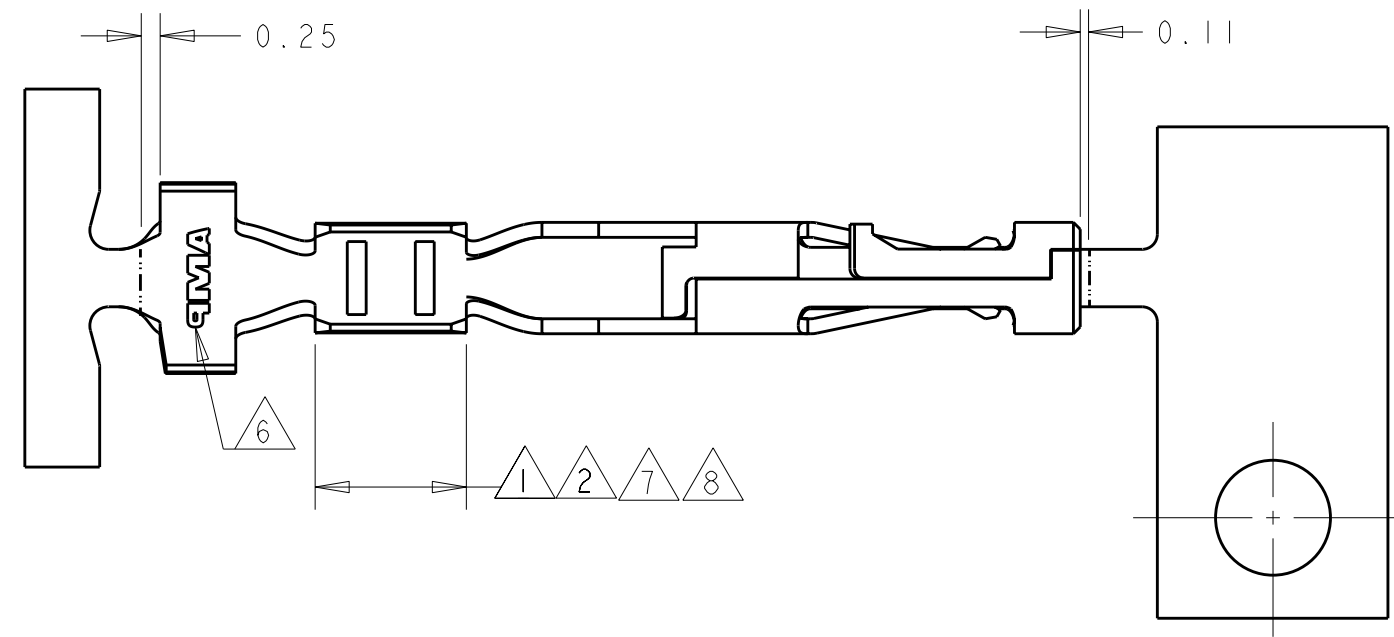
A

D

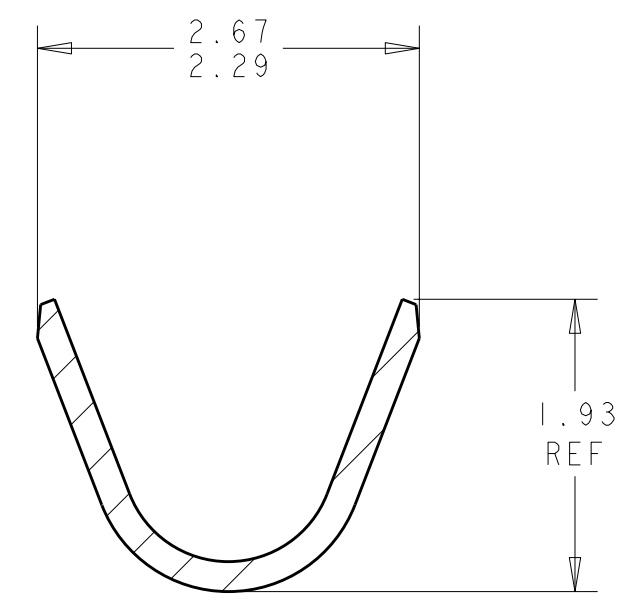
C

B

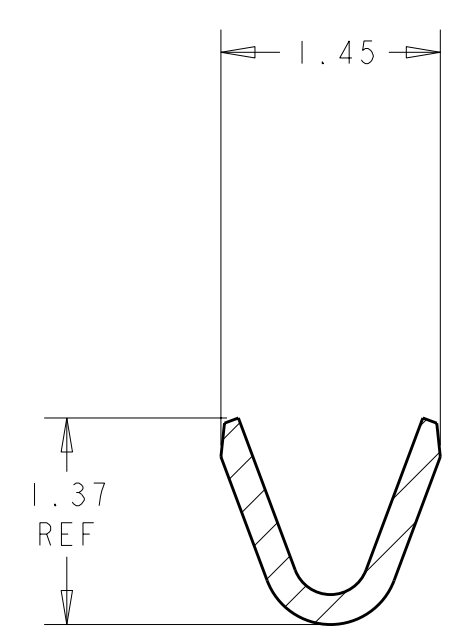
A



SECTION C-C
SCALE 20:1

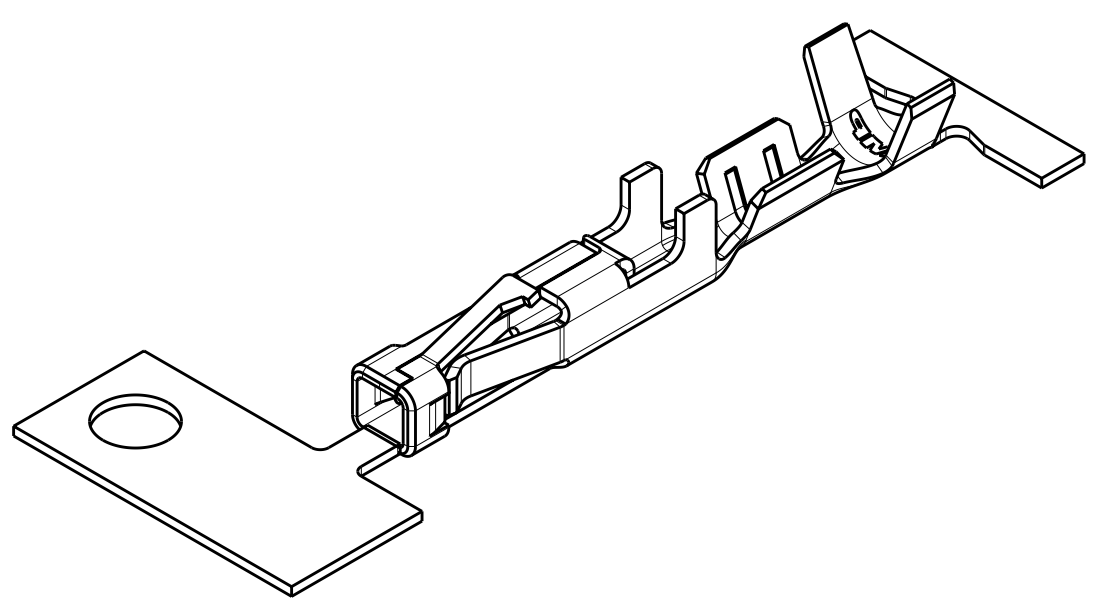


SECTION B-B
SCALE 20:1

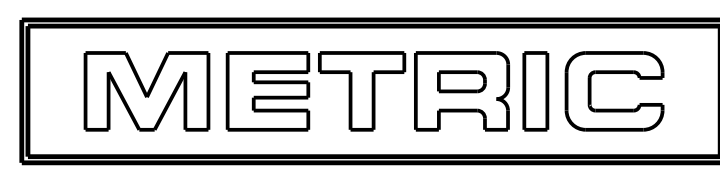




SECTION A-A
SCALE 20:1

- 1 0.000762 THK GOLD STRIPE IN THE GOLD PLATE AREA, BRIGHT TIN IN THE CRIMP AREA, OVER NICKEL PLATE.
- 2 0.000381 THK GOLD STRIPE IN THE GOLD PLATE AREA, BRIGHT TIN IN THE CRIMP AREA, OVER NICKEL PLATE.
- 3 0.0015 - 0.0040 THK BRIGHT TIN.
- 4. WIRE RANGE: 26 - 30 AWG.
- 5. INSULATION RANGE 0.89 - 1.524.
- 6 AMP LOGO LOCATED APPROXIMATELY AS SHOWN.
- 7 0.000762 THK GOLD STRIPE IN THE GOLD PLATE AREA, BRIGHT TIN-LEAD IN THE CRIMP AREA, OVER NICKEL PLATE.
- 8 0.000381 THK GOLD STRIPE IN THE GOLD PLATE AREA, BRIGHT TIN-LEAD IN THE CRIMP AREA, OVER NICKEL PLATE.



3 DIMENSIONAL MODEL
SCALE 8:1



THIS DRAWING IS A CONTROLLED DOCUMENT.			DWN K. WHITAKER	12-OCT-1999	<div>TE Connectivity</div>						
<div>DIMENSIONS: mm</div> <div></div>			CHK K. COBLE	12-OCT-1999							
			APVD K. COBLE	12-OCT-1999							
<div>TOLERANCES UNLESS OTHERWISE SPECIFIED:</div> <div>0 PLC ± 1 PLC ± 2 PLC ±0.13 3 PLC ± 4 PLC ± ANGLES ±0.30° FINISH</div>			PRODUCT SPEC		NAME <div>CONTACT, RECEPTACLE, CRIMP SNAP-IN, MICRO MATE-N-LOK(TM)</div>						
			APPLICATION SPEC								
			WEIGHT								
			MATERIAL								
0.2 PH BRZ			SEE TABLE		SIZE			CAGE CODE	DRAWING NO		RESTRICTED TO
					A200779			C-794607		-	
CUSTOMER DRAWING					SCALE		10:1	SHEET		OF	REV
											F1