



Chipsmall Limited consists of a professional team with an average of over 10 year of expertise in the distribution of electronic components. Based in Hongkong, we have already established firm and mutual-benefit business relationships with customers from,Europe,America and south Asia,supplying obsolete and hard-to-find components to meet their specific needs.

With the principle of “Quality Parts,Customers Priority,Honest Operation,and Considerate Service”,our business mainly focus on the distribution of electronic components. Line cards we deal with include Microchip,ALPS,ROHM,Xilinx,Pulse,ON,Everlight and Freescale. Main products comprise IC,Modules,Potentiometer,IC Socket,Relay,Connector.Our parts cover such applications as commercial,industrial, and automotives areas.

We are looking forward to setting up business relationship with you and hope to provide you with the best service and solution. Let us make a better world for our industry!



Contact us

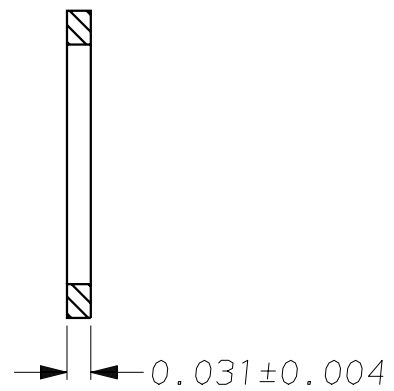
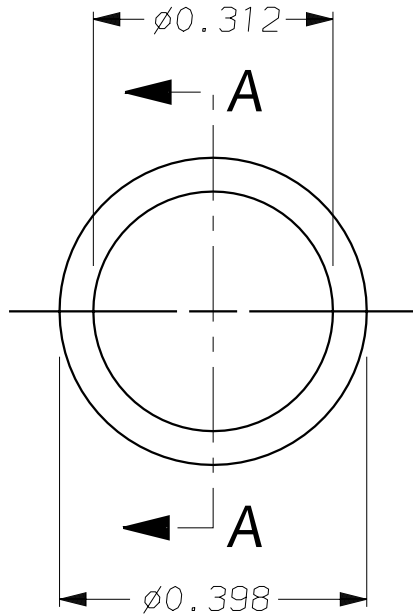
Tel: +86-755-8981 8866 Fax: +86-755-8427 6832

Email & Skype: info@chipsmall.com Web: www.chipsmall.com

Address: A1208, Overseas Decoration Building, #122 Zhenhua RD., Futian, Shenzhen, China



ALL DIMS. AND TOLS. PER ANSI Y14.5	NAME	PL/FB	DATE	3/6/73	7955	REV	B
	SCALE	4:1	APPR.			SHT.	OF
TOLERANCES		UNLESS OTHERWISE SPECIFIED DIMENSIONS ARE IN INCHES		CKW PANEL SEAL OPTION			
DECIMAL	ANGLE	THIS DOCUMENT AND THE INFORMATION IN IT IS THE EXCLUSIVE PROPERTY OF C&K COMPONENTS, INC., AND IS NOT TO BE USED OR DISCLOSED WITHOUT THE EXPRESS WRITTEN PERMISSION OF C&K COMPONENTS, INC.					
.XX±	.XXX± .005 ±						
<input checked="" type="checkbox"/> CRITICAL - MUST COMPLY WITH C&K QUALIFICATION STD. CKQI0019							
<input type="checkbox"/> MAJOR DIMENSION							



SECTION A-A

CAD FILE NO.: 7955

NOTES:

1. MATERIAL: BUNA-N, DUROMETER 65
2. UNLESS OTHERWISE SPECIFIED:
 - a. MOLDING FLASH NOT TO EXCEED 0.005 MAX.
CIRC. BY 0.003 MAX. RADIAL.
3. PARTS MUST BE CLEAN AND DRY.
4. SILICONE-BASED MOLD RELEASE OR ADDITIVES ARE NOT PERMITTED.
5. C&K PRODUCT ENGINEERING APPROVAL MUST BE OBTAINED PRIOR TO ANY MODIFICATIONS TO EXISTING EJECTOR PINS, PARTING LINE, GATE AND CAVITY ID LOCATIONS.
- ⓑ 6. REV 'B' CREATED PER TOOLING TRANSFER PROCEDURE FOR TOOL RE-LOCATION AND TRACEABILITY.
- ⓑ 7. THIS PART MUST BE RoHS COMPLIANT AND MEET ALL REQUIREMENTS OF RoHS DIRECTIVE 2002/95/EC.

ECN	SYM	DESCRIPTION	DATE	ECN	SYM	DESCRIPTION	DATE
6460	A	REDRAWN ON CAD, REVISED NOTES, DELETED C&K SPEC 401 DESCRIPTION	3/21/94 FB				
ECO# 0005512	B	ADDED NOTES 6 & 7	9/1/09 CAB				

7955	SHT.	OF	REV B
------	------	----	----------