



Chipsmall Limited consists of a professional team with an average of over 10 year of expertise in the distribution of electronic components. Based in Hongkong, we have already established firm and mutual-benefit business relationships with customers from,Europe,America and south Asia,supplying obsolete and hard-to-find components to meet their specific needs.

With the principle of “Quality Parts,Customers Priority,Honest Operation,and Considerate Service”,our business mainly focus on the distribution of electronic components. Line cards we deal with include Microchip,ALPS,ROHM,Xilinx,Pulse,ON,Everlight and Freescale. Main products comprise IC,Modules,Potentiometer,IC Socket,Relay,Connector.Our parts cover such applications as commercial,industrial, and automotives areas.

We are looking forward to setting up business relationship with you and hope to provide you with the best service and solution. Let us make a better world for our industry!



Contact us

Tel: +86-755-8981 8866 Fax: +86-755-8427 6832

Email & Skype: info@chipsmall.com Web: www.chipsmall.com

Address: A1208, Overseas Decoration Building, #122 Zhenhua RD., Futian, Shenzhen, China



Level control

→ Electrode and probe holders

■ Level control accessories



3 probe
electrode holder



Single probe
electrode holder



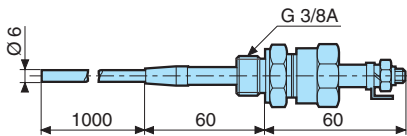
Protected
holder

Part numbers

Type	Accessories	Operating temperature (°C)	Pressure	Code
S8	Light and compact 3-probe electrode holder (stainless steel) Electrode holder and 1000 mm probe Especially recommended for drinks dispensers and for applications where space is limited	80	2 kg/cm ²	79 696 044
S3	Electrode holder with a single probe supplied in a standard length of 1000 mm. (304 stainless steel) Mounting with external 3/8" BSP thread and hexagonal head. Use 24 mm. spanner for hexagon. Suitable for use on boilers, autoclaves	≤ 200	Max.: 25 Kg/cm ²	79 696 014
S7	Protected electrode for mounting by suspension. Protective shell: PUC (S7) Electrode: stainless steel Length of cable as requested (ref. C1) : 79 696 001			79 696 043
S5	Suitable for high pressures and high temperatures. Metal parts of stainless steel, isolated by ceramic. 3/8" BSP mounting thread.	≤ 350	Max.: 15 Kg/cm ²	79 696 006

Dimensions (mm)

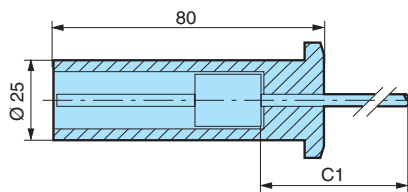
79 696 014 - S3



Electrode holder with a single probe supplied in a standard length of 1000mm. (304 stainless steel).

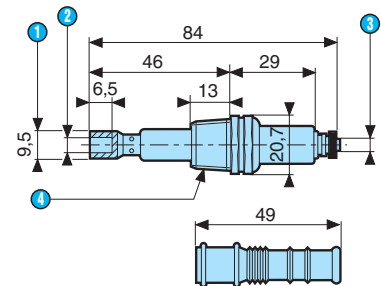
Mounting with external 3/8" BSP thread and hexagonal head.
Use 24 mm. spanner for hexagon. Suitable for use on boilers, autoclaves and under high temperature conditions up to 200°C and high pressure conditions up to 25 kg/cm²

79 696 043 - S7



Protected electrode for mounting by suspension.
Protective shell: PUC (S7)
Electrode: stainless steel.
Length of cable as requested (C1) : 79 696 001

S5

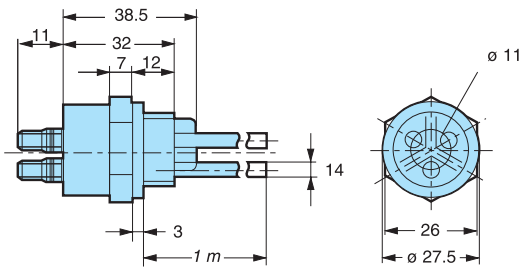


- ① 9.5 Across flats
- ② 1/4 width
- ③ 5/32 width
- ④ 3/8 tapered NPT

Suitable for high pressures and high temperatures. For use up to 350 °C and 15 kg/cm²
Metal parts of stainless steel, isolated by ceramic.
3/8" BSP mounting thread.

Dimensions (mm)

79 696 044 - S8



Light and compact 3-probe electrode holder (stainless steel).
Electrode holder and 1000 mm probe.
Especially recommended for drinks dispensers
and for applications where space
is limited.

Operating temperature: 80 °C
Max. pressure: 2 kg/cm²