



Chipsmall Limited consists of a professional team with an average of over 10 year of expertise in the distribution of electronic components. Based in Hongkong, we have already established firm and mutual-benefit business relationships with customers from,Europe,America and south Asia,supplying obsolete and hard-to-find components to meet their specific needs.

With the principle of “Quality Parts,Customers Priority,Honest Operation,and Considerate Service”,our business mainly focus on the distribution of electronic components. Line cards we deal with include Microchip,ALPS,ROHM,Xilinx,Pulse,ON,Everlight and Freescale. Main products comprise IC,Modules,Potentiometer,IC Socket,Relay,Connector.Our parts cover such applications as commercial,industrial, and automotives areas.

We are looking forward to setting up business relationship with you and hope to provide you with the best service and solution. Let us make a better world for our industry!



Contact us

Tel: +86-755-8981 8866 Fax: +86-755-8427 6832

Email & Skype: info@chipsmall.com Web: www.chipsmall.com

Address: A1208, Overseas Decoration Building, #122 Zhenhua RD., Futian, Shenzhen, China



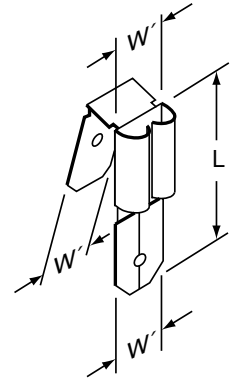


Specialty Terminals

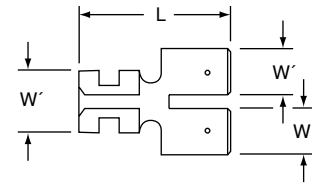
77-250, 7MMF-250

Adapter Disconnect, Male-Female,
Non-Insulated

Data Sheet



MA250DMFM*



MA250DMMF

Product Number	Mates with Female & Male Width (W') x Thickness	L
77-250*	0.250 x 0.032	0.78
7MMF-250	0.250 x 0.032	0.76

*Not UL Listed or CSA Certified



LISTED 314R
UNDERWRITERS
LABORATORIES
STANDARD NO. UL 486A
3M FILE NO. E23438



CANADIAN STANDARDS
ASSOCIATION
STANDARD NO. 22.2
NO. 0, 65
3M FILE NO. LR22190

WARNING

Turn power off before installing or removing terminal. All electrical work should be done according to appropriate electrical codes.

The separable connection formed by the Adapter and the mating connector(s) may require a suitable strain relief to prevent accidental separation.

Specifications

Maximum Operating Temp.:	482°F (250°C)
Maximum Current:	30 Amps
Terminal Material:	Brass
MA250DMFM Plating:	Tin
MA250DMMF Plating:	None

Engineering Specification

Adapters shall, electrically and mechanically, connect to one or more separable connectors in a reusable manner.

The Double Male-Female Adapter shall be 0.032" thick brass, having two 0.250" x 0.032" Male Quick-Disconnect Tabs joined to a single Female Quick Disconnect, sized for gripping a 0.250" x 0.032" Male Tab. The Adapter Tabs shall conform to NEMA DC-2, 1976 dimensions.

The separable connection formed by the Adapter and the mating connector(s) may require a suitable strain relief to prevent accidental separation.

3M and Scotchlok are trademarks of 3M.



is a trademark of Underwriters Laboratories.



is a trademark of Canadian Standards Association.

IMPORTANT NOTICE

Before using this product, you must evaluate it and determine if it is suitable for your intended application. You assume all risks and liability associated with such use.

Warranty; Limited Remedy; Limited Liability. This product will be free from defects in material and manufacture as of the date of purchase. **3M MAKES NO OTHER WARRANTIES INCLUDING, BUT NOT LIMITED TO, ANY IMPLIED WARRANTY OF MERCHANTABILITY OR FITNESS FOR A PARTICULAR PURPOSE.** If this product is defective within the warranty period stated above, your exclusive remedy shall be, at 3M's option, to replace or repair the 3M product or refund the purchase price of the 3M product. **Except where prohibited by law, 3M will not be liable for any loss or damage arising from this 3M product, whether direct, indirect, special, incidental or consequential regardless of the legal theory asserted.**



Electrical Products Division

6801 River Place Blvd.
Austin, TX 78726-9000
<http://www.3M.com/elpd>

Litho in USA.
© 3M 2002 78-8126-5680-5-A