



Chipsmall Limited consists of a professional team with an average of over 10 year of expertise in the distribution of electronic components. Based in Hongkong, we have already established firm and mutual-benefit business relationships with customers from,Europe,America and south Asia,supplying obsolete and hard-to-find components to meet their specific needs.

With the principle of "Quality Parts,Customers Priority,Honest Operation,and Considerate Service",our business mainly focus on the distribution of electronic components. Line cards we deal with include Microchip,ALPS,ROHM,Xilinx,Pulse,ON,Everlight and Freescale. Main products comprise IC,Modules,Potentiometer,IC Socket,Relay,Connector.Our parts cover such applications as commercial,industrial, and automotives areas.

We are looking forward to setting up business relationship with you and hope to provide you with the best service and solution. Let us make a better world for our industry!



Contact us

Tel: +86-755-8981 8866 Fax: +86-755-8427 6832

Email & Skype: info@chipsmall.com Web: www.chipsmall.com

Address: A1208, Overseas Decoration Building, #122 Zhenhua RD., Futian, Shenzhen, China



» Measurement+Patch Adapter

J-Link Measurement+Patch Adapter

The J-Link Patch Adapter allows easy customized wiring between J-Link and targets that do not provide a standard debug connector that fits to any of the adapters available for J-Link (e.g. the Discovery Boards from ST Microelectronics). It comes with a set of colored jumper wires, allowing easy differentiation of the debug signals. The J-Link Patch Adapter also provides test points for all debug signals to allow easy access to them for checking signal integrity. It has a standard 20-pin 0.1" socket towards the J-Link debug probe and a standard 20-pin 0.1" header on the target side, so it can be plugged-in directly to J-Link, maintaining a 1:1 connection. For increased flexibility VTref on pin 1 and the target supply voltage on pin 19 can be interrupted by means of two jumpers.



[Click to enlarge](#)



[Click to enlarge](#)

J-Link Measurement+Patch Adapter in use



[Click to enlarge](#)

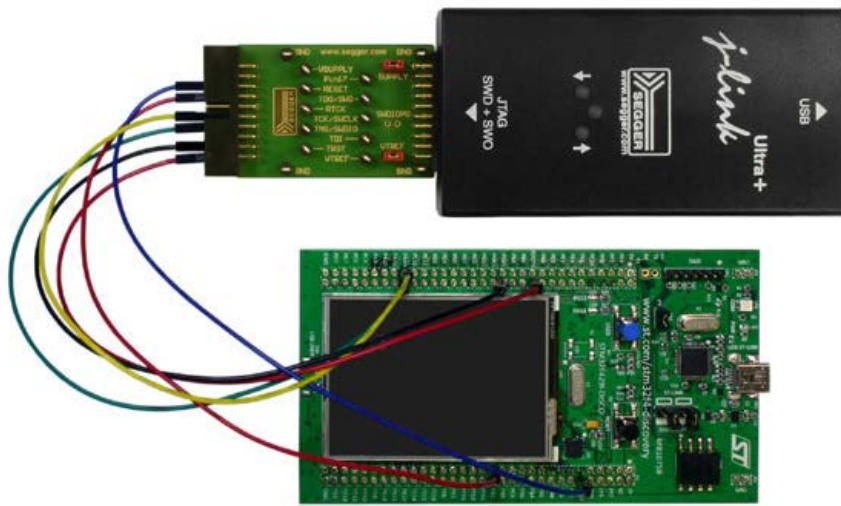
 **Head office Germany**

Phone: +49-2103-2878-0
 Fax: +49-2103-2878-28
 E-mail: info@segger.com
www.segger.com

 **US office**

Phone: +1-978-874-0299
 Fax: +1-978-874-0599
 E-mail: info@segger-us.com
www.segger-us.com





[Click to enlarge](#)

[Imprint](#) [Disclaimer](#) [Sitemap](#)

[back to top](#)