



Chipsmall Limited consists of a professional team with an average of over 10 year of expertise in the distribution of electronic components. Based in Hongkong, we have already established firm and mutual-benefit business relationships with customers from,Europe,America and south Asia,supplying obsolete and hard-to-find components to meet their specific needs.

With the principle of “Quality Parts,Customers Priority,Honest Operation,and Considerate Service”,our business mainly focus on the distribution of electronic components. Line cards we deal with include Microchip,ALPS,ROHM,Xilinx,Pulse,ON,Everlight and Freescale. Main products comprise IC,Modules,Potentiometer,IC Socket,Relay,Connector.Our parts cover such applications as commercial,industrial, and automotives areas.

We are looking forward to setting up business relationship with you and hope to provide you with the best service and solution. Let us make a better world for our industry!



Contact us

Tel: +86-755-8981 8866 Fax: +86-755-8427 6832

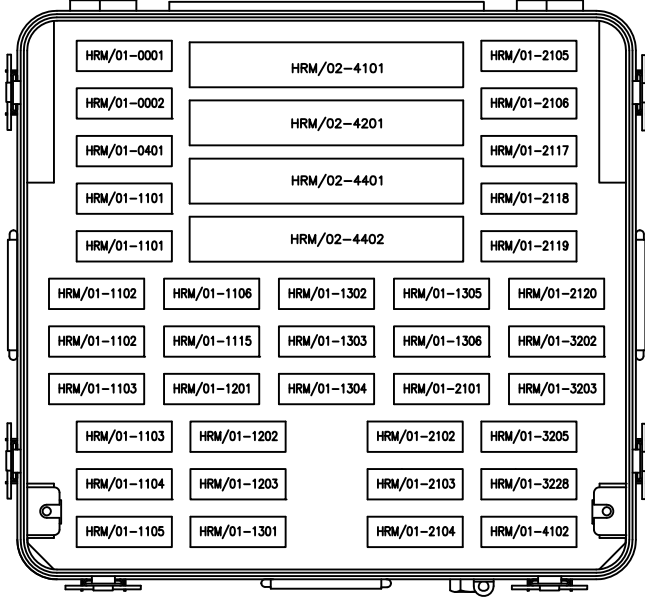
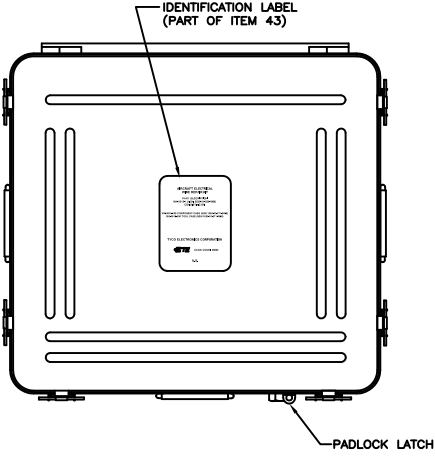
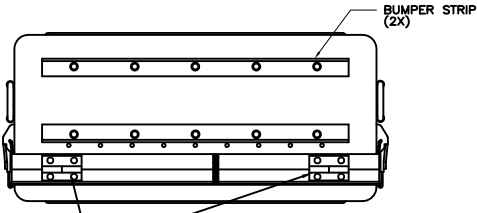
Email & Skype: info@chipsmall.com Web: www.chipsmall.com

Address: A1208, Overseas Decoration Building, #122 Zhenhua RD., Futian, Shenzhen, China



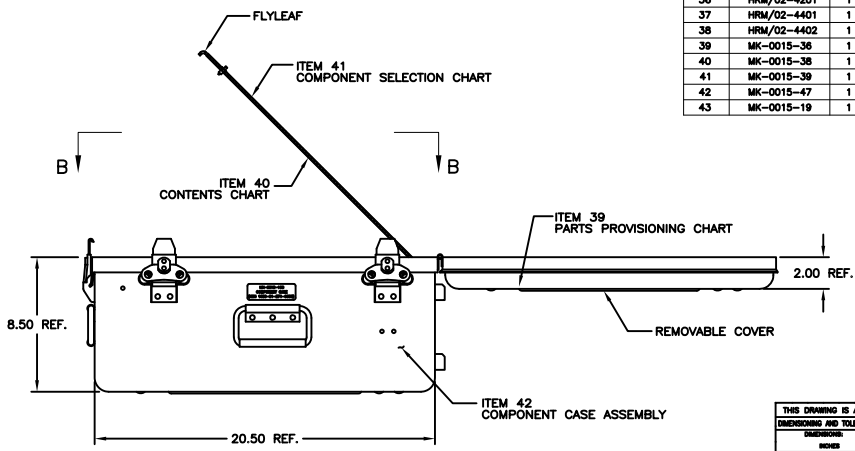
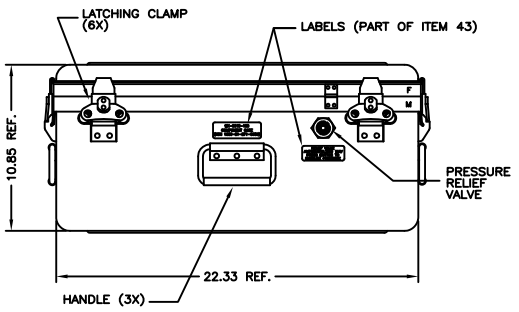
ALL DIMENSIONS IN MILLIMETERS UNLESS OTHERWISE SPECIFIED
 ALL DIMENSIONS UNLESS OTHERWISE SPECIFIED

REV	DATE	DESCRIPTION	BY	APP
A		INITIAL RELEASE PER ECO-12-007038		



VIEW B-B
 ROTATED 90° COUNTER CLOCKWISE
 (FLYLEAF REMOVED FOR CLARITY)

ITEM NO.	TE PART DESCRIPTION	QTY	DESCRIPTION
1	HRM/01-0001	1	SELF CLINCHING CABLE STRAP MS3367-1-0
2	HRM/01-0002	1	TERMINAL BOARD MS27212-1-B
3	HRM/01-0401	1	DATA BUS CABLE, SIZE 22
4	HRM/01-1101	2	SEALED CRIMP SPLICE FOR SIZES 20-22-24-26 HIGH TEMPERATURE WIRE
5	HRM/01-1102	2	SEALED CRIMP SPLICE FOR SIZES 16-18-20 HIGH TEMPERATURE WIRE
6	HRM/01-1103	2	SEALED CRIMP SPLICE FOR SIZES 12-14-16 HIGH TEMPERATURE WIRE
7	HRM/01-1104	1	SEALED CRIMP SPLICE FOR SIZES 20-22-24-26 LOW TEMPERATURE WIRE
8	HRM/01-1105	1	SEALED CRIMP SPLICE FOR SIZES 16-18-20 LOW TEMPERATURE WIRE
9	HRM/01-1106	1	SEALED CRIMP SPLICE FOR SIZES 12-14-16 LOW TEMPERATURE WIRE
10	HRM/01-1115	1	SPLIT BOLT SPLICE CONNECTOR FOR SIZES 4-6-8-10 WIRE
11	HRM/01-1201	1	SPLICE FOR SHIELDED WIRE SIZES 20-22-24-26
12	HRM/01-1202	1	SPLICE FOR SHIELDED WIRE SIZES 16-18-20
13	HRM/01-1203	1	SPLICE FOR SHIELDED WIRE SIZES 12-14-16
14	HRM/01-1301	1	SPLICE FOR COAXIAL CABLES RG-1798/U, RG-316/U
15	HRM/01-1302	1	SPLICE FOR COAXIAL CABLES RG-1808/U
16	HRM/01-1303	1	SPLICE FOR COAXIAL CABLES RG-124/U, RG-1428/U, RG-302/U, RG-303/U
17	HRM/01-1304	1	SPLICE FOR COAXIAL CABLES RG-09/U, RG-214/U, RG-225/U, RG-393/U
18	HRM/01-1305	1	SPLICE FOR COAXIAL CABLES RG-58C/U, RG-223/U
19	HRM/01-1308	1	SPLICE FOR COAXIAL CABLES RG-59B/U, RG-718/U
20	HRM/01-2101	1	TERMINAL LUGS FOR SIZE 24 WIRE M7928/1-7, -8, -9, -10
21	HRM/01-2102	1	TERMINAL LUGS FOR SIZE 22 WIRE M7928/1-12, -14, -15, -16
22	HRM/01-2103	1	TERMINAL LUGS FOR SIZE 20 WIRE M7928/1-21, -23, -24, -25
23	HRM/01-2104	1	TERMINAL LUGS FOR SIZE 18 WIRE M7928/1-30, -32, -33, -34
24	HRM/01-2105	1	TERMINAL LUGS FOR SIZE 16 WIRE M7928/1-39, -41, -42, -43
25	HRM/01-2106	1	TERMINAL LUGS FOR SIZE 14 WIRE M7928/1-48, -50, -51, -52
26	HRM/01-2117	1	SEALING PLUGS M27488 CONNECTOR CONTACTS M39029/1, /69, /70, CNS, WTK, 031
27	HRM/01-2118	1	CONNECTOR CONTACTS M39029/22, /30, /56, /58
28	HRM/01-2119	1	CONNECTOR CONTACTS M39029/4, /5, /28, /57, /63, /64
29	HRM/01-2120	1	CONNECTOR CONTACTS M39029/16, /18, /31, /32 AND M28604/9, /10
30	HRM/01-3202	1	SHIELD TERMINATOR WITH GROUND WIRE M83519/2-7
31	HRM/01-3203	1	SHIELD TERMINATOR WITH GROUND WIRE M83519/2-8
32	HRM/01-3205	1	SHIELD TERMINATOR WITH GROUND WIRE M83519/2-10
33	HRM/01-3228	1	TERMINATORS FOR NICKEL PLATED SHIELD INCLUDING VERMILION
34	HRM/01-4102	1	MTC FLAT CONNECTOR WAFERS WITH ROUND WIRE CABLE SEGMENTS
35	HRM/02-4101	1	PRIMARY WIRE REPAIR SEGMENTS SIZES 20, 16, 12
36	HRM/02-4201	1	SHIELDED WIRE REPAIR SEGMENTS SIZES 20, 16, 12
37	HRM/02-4401	1	DATA BUS REPAIR COMPONENTS TRIAXIAL PLUGS AND JACKS, CABLE SEGMENTS
38	HRM/02-4402	1	DATA BUS REPAIR COMPONENTS COUPLERS, TERMINATORS, CABLE SEGMENTS
39	MK-0015-36	1	PARTS PROVISIONING CHART
40	MK-0015-38	1	CONTENTS CHART
41	MK-0015-39	1	COMPONENT SELECTION CHART
42	MK-0015-47	1	COMPONENT CASE ASSEMBLY
43	MK-0015-19	1	CASE LABEL SET



If this document is printed it becomes uncontrolled. Check for the latest revision

Raychem Devices
 CUSTOMER DRAWING

STE TE Connectivity

AIRCRAFT ELECTRICAL WIRE REPAIR KIT
 DAAJ09-90-C-1102
 NSN 1680-01-271-0650

PART NUMBER: 254033-000
 SIZE: A1
 ONE USE ONLY (UNLESS OTHERWISE SPECIFIED)
 NONE