



Chipsmall Limited consists of a professional team with an average of over 10 year of expertise in the distribution of electronic components. Based in Hongkong, we have already established firm and mutual-benefit business relationships with customers from,Europe,America and south Asia,supplying obsolete and hard-to-find components to meet their specific needs.

With the principle of “Quality Parts,Customers Priority,Honest Operation,and Considerate Service”,our business mainly focus on the distribution of electronic components. Line cards we deal with include Microchip,ALPS,ROHM,Xilinx,Pulse,ON,Everlight and Freescale. Main products comprise IC,Modules,Potentiometer,IC Socket,Relay,Connector.Our parts cover such applications as commercial,industrial, and automotives areas.

We are looking forward to setting up business relationship with you and hope to provide you with the best service and solution. Let us make a better world for our industry!



## Contact us

Tel: +86-755-8981 8866 Fax: +86-755-8427 6832

Email & Skype: info@chipsmall.com Web: www.chipsmall.com

Address: A1208, Overseas Decoration Building, #122 Zhenhua RD., Futian, Shenzhen, China



ATLANTIC VERSION TERMINATOR INTERFACE ADAPTER	PART NUMBER	REVISION	DESCRIPTION	FEED TYPE	CONVERT TO	PART NUMBERS REQUIRED					
	2266298-1	B	FINE CRIMP HEIGHT ADJUST	MECHANICAL	PNEUMATIC FEED	2119950-1	1338683-8	5-18022-5	2119641-1	2119799-1	2063440-1
	2266298-2	B	FINE CRIMP HEIGHT ADJUST	PNEUMATIC	SERVO LATCH PLATE	2119951-1	-	8-2266298-5	1901094-3	-	2168400-6 (QUANTITY 2)
					SMART APPLICATOR	2161326-1	-	8-2266298-4	-	-	
					MECHANICAL FEED	2119949-1	1338683-8	5-18022-5	2119653-1	-	-
	2266298-5	B	FINE CRIMP HEIGHT ADJUST	SERVO LATCH PLATE	SERVO LATCH PLATE	2119951-1	-	8-2266298-5	1901094-3	-	2168400-6 (QUANTITY 2)
					SMART APPLICATOR	2161326-1	-	8-2266298-4	-	-	
	2266298-6	B	NON-CRIMP HEIGHT ADJUST	SERVO LATCH PLATE	MECHANICAL FEED	2119949-1	1338683-8	5-18022-5	2119653-1	-	-
2266298-7	B	FINE CRIMP HEIGHT ADJUST	NONE	PNEUMATIC FEED	2119950-1	1338683-8	5-18022-5	2119641-1	2119799-1	2063440-1	
7-2266298-7	A	CRIMP TOOLING KIT	-	-	-	-	-	-	-	-	

APPLICATOR DATA		
CRIMP	SIZE	TYPE
WIRE	1.78 mm [.070]	F
INSUL	3.18 mm [.125]	O

APPLICATOR INSTRUCTIONS 408-10389

TERMINAL DATA: TE TERMINAL	TE CRIMP SPECIFICATION
TERMINAL NAME: SINGLE WIRE, MCON MONO 1.2 TERMINAL	
WIRE STRIP LENGTH: 3.30-3.90 mm [.130-.154 IN]	TERMINAL INSULATION RANGE: 1.45-2.10 mm [.057-.083 IN]
TERMINAL APPLICATION SPECIFICATION: 114-32121	
TERMINALS APPLIED	
TE TERMINAL: 2138597-1	TE SEAL: 967067-1
TE TERMINAL: 2203830-1	TE SEAL: 967067-1
	SEAL INSULATION RANGE: 1.4 - 2.1

WIRE SIZE	CRIMP HEIGHT mm [INCH]	CRIMP HEIGHT REFERENCE SETTING
1.00mm2	1.05 +/- 0.05 [.041 +/- .002]	8.3
0.75mm2	0.97 +/- 0.05 [.038 +/- .002]	9.1

- 1. RECOMMENDED SPARE PARTS
- 2. GREASE BEARING SURFACES LIGHTLY
- 3. LUBRICATE DAILY PER THE APPLICATOR INSTRUCTION SHEET SUPPLIED WITH THE APPLICATOR.
- 4. APPLICATOR SPECIFIC DATA TO BE ENTERED INTO BLANK MEMORY CHIP AT ASSEMBLY. SEE BELOW FOR PART NUMBER:
  - MECHANICAL FEED WITH "SMART APPLICATOR" CONVERSION: 8-2266298-4
  - PNEUMATIC FEED WITH "SMART APPLICATOR" CONVERSION: 8-2266298-4
  - SERVO FEED WITH "FINE CRIMP HEIGHT ADJUST": 8-2266298-5
  - SERVO FEED WITH "NON-CRIMP HEIGHT ADJUST": 8-2266298-6
- 5. ADJUSTMENT OF THE STRIPPER MAY BE REQUIRED WHEN MOVING THE APPLICATOR BETWEEN BENCH AND LEADMAKER APPLICATIONS.
- 6. APPLY PART NUMBER 1-23419-5 LOCTITE TO THREADS OF ITEM 62. APPLY PART NUMBER 2-23419-6 LOCTITE TO THREADS OF ITEM 242. FOR -6 ONLY APPLY PART NUMBER 1-23419-5 LOCTITE TO THREADS OF ITEM 37.
- 7. GREASE THREADS, GROOVE AND O-RING ON ITEMS 35 & 252.
- 8. MAGNET, ITEM 166 MUST BE ORIENTED CORRECTLY IN ORDER TO PROPERLY ACTUATE THE COUNTER.
- 9. CRIMP HEIGHT REFERENCE SETTING WAS THE SETTING USED WHEN THE APPLICATOR WAS QUALIFIED AT THE FACTORY. ADJUSTMENT MAY BE NECESSARY WHEN RUNNING APPLICATOR IN THE FIELD.
- 10. SPARE FEED CAM STORAGE LOCATION REFER TO INSTRUCTION SHEET FOR ADDITIONAL INFORMATION.
- 11. TO CONVERT THE APPLICATOR TO A NON-CARRIER CUTTING STYLE, REMOVE ITEM 13 AND ATTACH TO THE LOCATION ON THE BACK SIDE OF THE HOUSING. REFER TO INSTRUCTION SHEET FOR ADDITIONAL INFORMATION.
- 12. WHEN ASSEMBLING A NON CRIMP HEIGHT ADJUST APPLICATOR (-6) USE SHIMS FROM ITEM 260 TO ACHIEVE A NOMINAL SHIM HEIGHT OF 4.75. THIS APPLICATOR APPLIES TERMINAL WITH A SEAL.
- 13. APPLY TORO-SEAL IN ALLEN SOCKET TO FILL HOLE AFTER FLAT HD HAS BEEN ADJUSTED TO CORRECT HEIGHT AT QUALIFICATION. APPLY #1-23419-5 LOC-TITE TO THREADS.

**\*WARNING**  
ON INSTALLATION, SET WIRE DISC, ITEM 40 TO LARGEST WIRE SIZE SETTING. USE OF SETTINGS BELOW MINIMUM REQUIRED CRIMP HEIGHT SETTING WILL CAUSE DAMAGE TO CRIMP TOOLING.

-77	-7	-6	-5	-2	-1	PART NO	DESCRIPTION	ITEM NO
-	-	1	-	-	-	2119957-2	APPLICATOR SHIM PACK	260
-	1	-	1	1	1	8-21084-0	O-RING, .676 ID, .070 DIA. MAT.	252

**ATLANTIC VERSION**  
Shown on sheets 1 of 4 & 2 of 4  
(Pacific version shown on sheets 3 of 4 & 4 of 4)

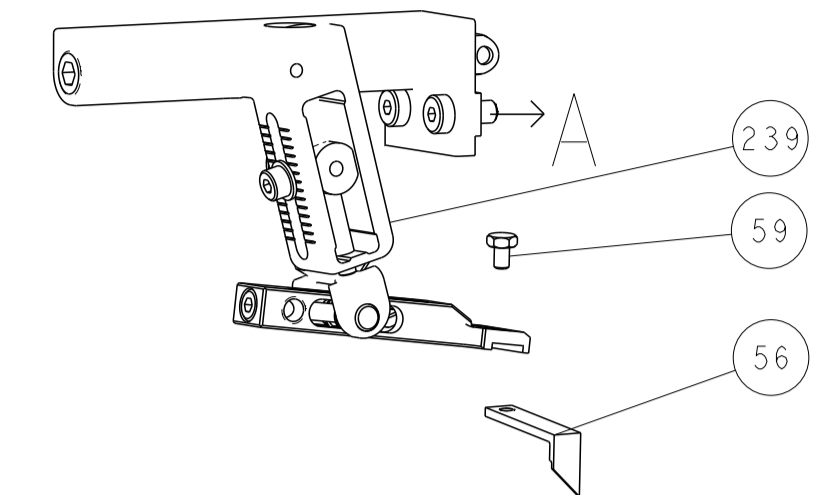
SET UP GAUGE	LOC	DIST	REVISIONS			
2119599-1	A	66	REV	DATE	BY	APPV
			B	01APR2015	MR	TE
			B1	29NOV2016	TB	TE

REV	DATE	BY	APPV	DESCRIPTION	ITEM NO		
-	-	-	-	1 -	2119640-1 PUSH ROD, AIR FEED	250	
-	-	-	-	1 -	1803259-1 BUSHING, FLANGED	249	
-	-	-	-	1 -	2119641-1 FEED CAM, AIR FEED	248	
-	1	-	1	1	2119798-1 DETENT PIN	247	
-	1	-	1	1	1-22279-3 SPRING, COMPRESSION	246	
-	-	1	-	-	2119758-1 RAM, AMP STYLE, SIDE FEED, NON-ADJ.	245	
-	1	1	1	1	2119082-3 CAM, SNAIL, INSULATION ADJUSTMENT	244	
-	1	1	1	1	2079764-1 WASHER, WAVE SPRING, CREST-TO-CREST	243	
-	1	1	1	1	2119083-1 RETAINER, INSULATION DIAL	242	
-	1	1	1	1	7-18023-7 SCR, SKT HD CAP M3 X 4.0	241	
-	-	2	2	-	2168400-6 SHCS, LOW HEAD, RoHS, M5 X 16	240	
-	-	-	-	1	2119580-1 MECHANICAL FEED ASSEMBLY	239	
-	-	-	-	1	2063440-1 AIR FEED MODULE	238	
-	-	1	1	-	2119740-2 TAG, IDENTIFICATION	213	
-	-	1	1	-	1901094-3 SPACER, FEEDER	198	
-	-	-	-	2	21045-3 RING, RETAIN, EXTERN, 3/16 CRESCENT	172	
-	1	1	1	1	994969-1 MAGNET, RARE EARTH HIGH ENERGY	166	
-	REF	REF	REF	REF	994970-2 COUNTER, MAGNETIC	164	
-	-	-	-	1	240638-1 SPRING, FEED FINGER	163	
-	-	-	-	1	3-23627-7 PIN, RETAIN, GRVD, 3/16 X .854	137	
-	-	-	-	1	2119799-1 HOLDER, FEED FINGER, AF	136	
-	-	REF	REF	-	SEE NOTE 4 MEMORY CHIP, PROGRAMMED	135	
-	-	1	1	-	1633743-1 SERVO FEED LATCH ASM	133	
-	-	REF	REF	-	2119944-1 FEED FINGER ASSEMBLY, SF	117	
-	1	1	1	1	455888-4 SPACER, CRIMPER	82	
-	1	1	1	1	2119956-1 DOCUMENTATION PACKAGE	71	
-	1	-	-	1	2119740-1 TAG, IDENTIFICATION	67	
-	2	2	2	2	2168078-1 SCREW, DRIVE, RH, RoHS, 2 x .188	66	
-	1	-	1	1	2119793-1 LIMITER, ADJUSTMENT BOLT	63	
-	3	-	3	3	992763-5 SCR, SET, SOC, CONE POINT, M3 x 4.0	62	
-	1	1	1	1	2079383-4 SCR, BHSC, RoHS (M4 X 8)	60	
-	-	-	-	1	5-18022-5 SCR, HEX HD CAP, M4 X 6.0	59	
-	1	1	1	1	985575-3 SCR, FLT SKT HD CAP M3 X 10.0	57	
-	-	-	-	1	1338683-8 FEED PAWL	56	
-	4	4	4	4	2168400-1 SHCS, LOW HEAD, RoHS, M4 X 12	54	
-	2	2	2	2	2168083-8 SCR, SKT HD CAP, RoHS, M4 X 16	53	
-	1	1	1	1	5018030-1 NUT, HEX, REG, RoHS, M3	52	
-	1	1	1	1	811242-5 BUMPER, HOLD DOWN	51	
-	1	1	1	1	690753-2 SPACER, TONKER	50	
-	-	-	-	1	2	18023-9 SCR, SKT HD CAP M4 X 6.0	49
-	-	-	-	-	1	2119652-1 FEED CAM, PRE FEED	48
-	-	-	-	-	1	2119653-1 FEED CAM, POST FEED	47
-	1	1	1	1	2119656-9 APPLICATOR BASIC ASSEMBLY, SF	46	
-	1	-	1	1	2119370-1 RAM, AMP STYLE, SIDE FEED	44	
-	1	1	1	1	2079383-7 SCR, BHSC, RoHS (M8 X 25)	41	
-	1	-	1	1	2119645-1 DISC, NUMBERED FA WIRE ADJUSTMENT	40	
-	1	-	1	1	2119957-1 APPLICATOR SHIM PACK	39	
-	1	1	1	1	2119644-1 RAM WASHER, PRECISION	38	
-	1	1	1	1	2119085-1 FA HEAD, ATLANTIC STYLE	37	
-	1	-	1	1	2119092-1 BOLT, ADJUSTMENT	35	
-	1	1	1	1	2-1752356-0 SUPPORT, TERMINAL	34	
-	2	2	2	2	2079383-5 SCR, BHSC, RoHS (M4 X 20)	33	
-	1	1	1	1	2161328-1 HEX HEAD, FLANGED, M5 x 8mm LONG	32	
-	1	1	1	1	1-1320908-2 SPACER, STRIP GUIDE	30	
-	1	1	1	1	2119959-1 ASSEMBLY, STRIP GUIDE	29	
-	1	1	1	1	455888-3 SPACER, CRIMPER	28	
-	1	1	1	1	1320928-6 STRIP GUIDE	24	
-	1	1	1	1	2168083-2 SCR, SKT HD CAP, RoHS, M4 X 8.0	21	
-	2	2	2	2	1-18028-2 WASHER, FLAT, REG M4	20	
-	1	1	1	1	2119533-1 STRIPPER, SIDE FEED	19	
-	1	1	1	1	2119806-1 INSERT, SHEAR	13	
-	1	1	1	1	3-22280-3 SPRING, COMPRESSION	12	
-	1	1	1	1	1-356885-4 STOP, SHEAR	11	
-	1	1	1	1	2119805-1 SHEAR HOLDER, FRONT	10	
-	1	1	1	1	318707-1 FLOATING SHEAR, FRONT	9	
-	1	1	1	1	2-1633919-6 ANVIL, COMBINATION	8	
-	1	1	1	1	240641-4 SPACER	7	
-	-	-	-	-	-	6	
-	1	1	1	1	2119781-2 DEPRESSOR, SHEAR	5	
-	1	1	1	1	2-238011-1 BLOCK, CRIMPER SPACER	4	
-	1	1	1	1	3-1633996-9 CRIMPER, INSULATION SPECIAL	3	
-	1	1	1	1	455888-5 SPACER, CRIMPER	2	
-	1	1	1	1	3-456404-5 CRIMPER, WIRE PREMIUM	1	

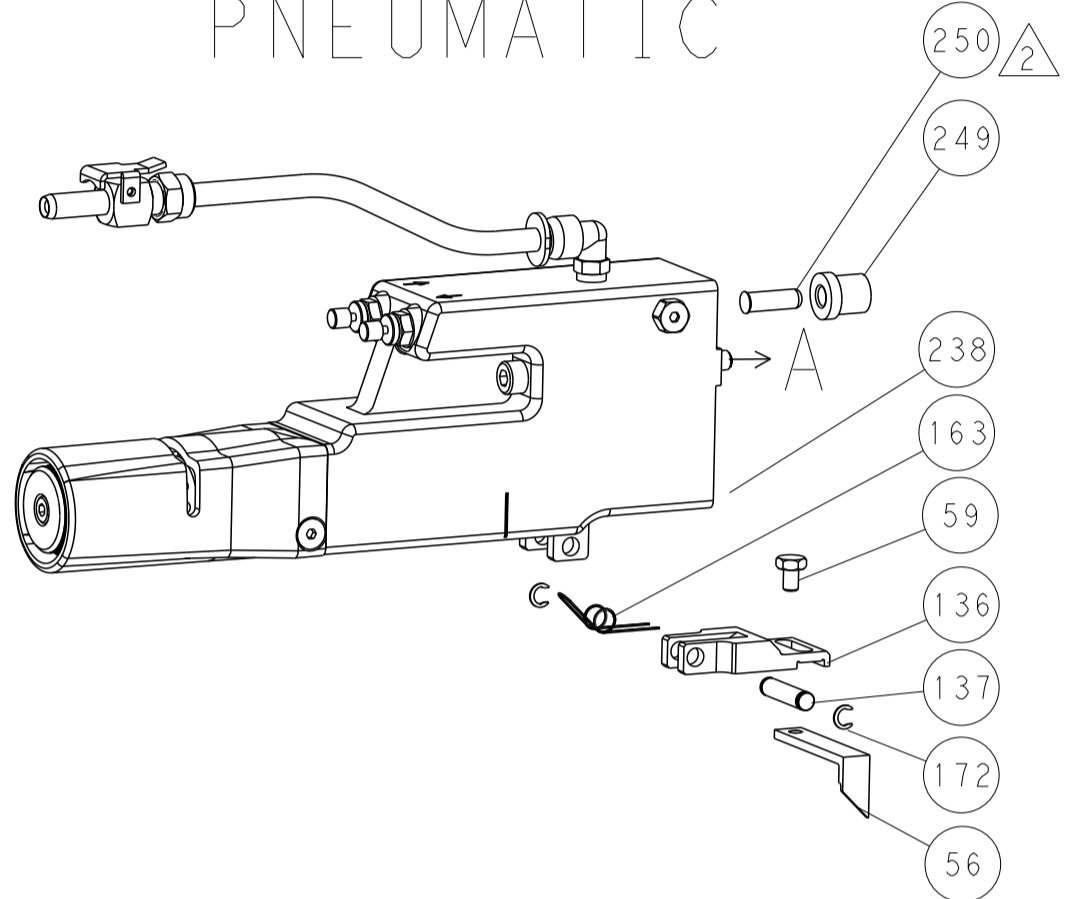
DIMENSIONS:	TOLERANCES UNLESS OTHERWISE SPECIFIED:	OWN	DATE	TE Connectivity
mm	0 PLC ±	HOFFNER	29MAY2014	Harrisburg, PA 17105-3608
	1 PLC ±	ELBIN	30MAY2014	
	2 PLC ±	ELBIN	30MAY2014	
	3 PLC ±			
	4 PLC ±			
	ANGLES ±			
MATERIAL:	FINISH:	APVD		
		PRODUCT SPEC		
		APPLICATION SPEC		
		WEIGHT		
		SIZE	A1	
		CAGE CODE	00779	
		DRAWING NO	2266298	
		RESTRICTED TO		
		Customer Accessible Production Drawing		
		SCALE	1:2	
		SHEET	1 of 4	
		REV	B1	

LOC	DIST	REVISIONS					
A	66	P	LTN	DESCRIPTION	DATE	OWN	APVD
		-		SEE SHEET 1			

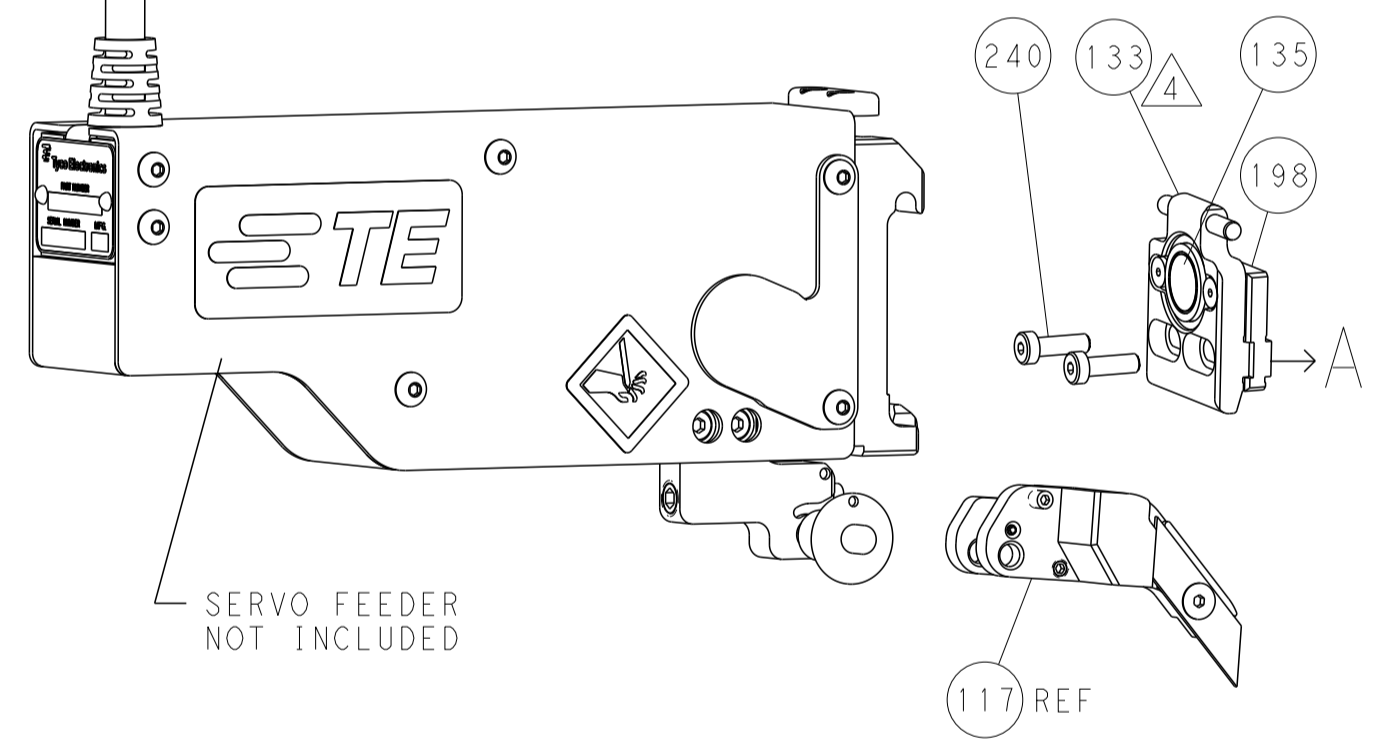
### FEED TYPE MECHANICAL



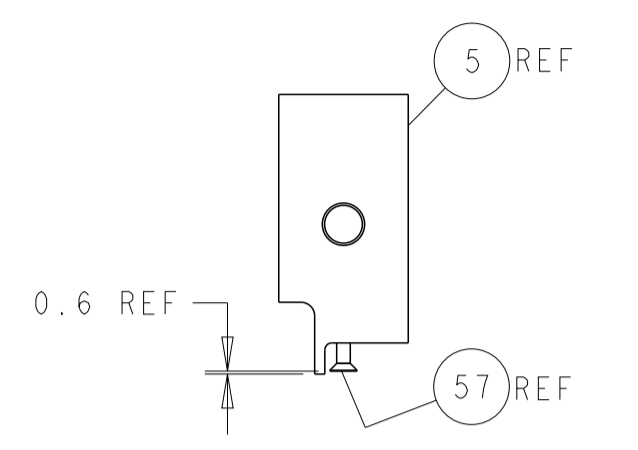
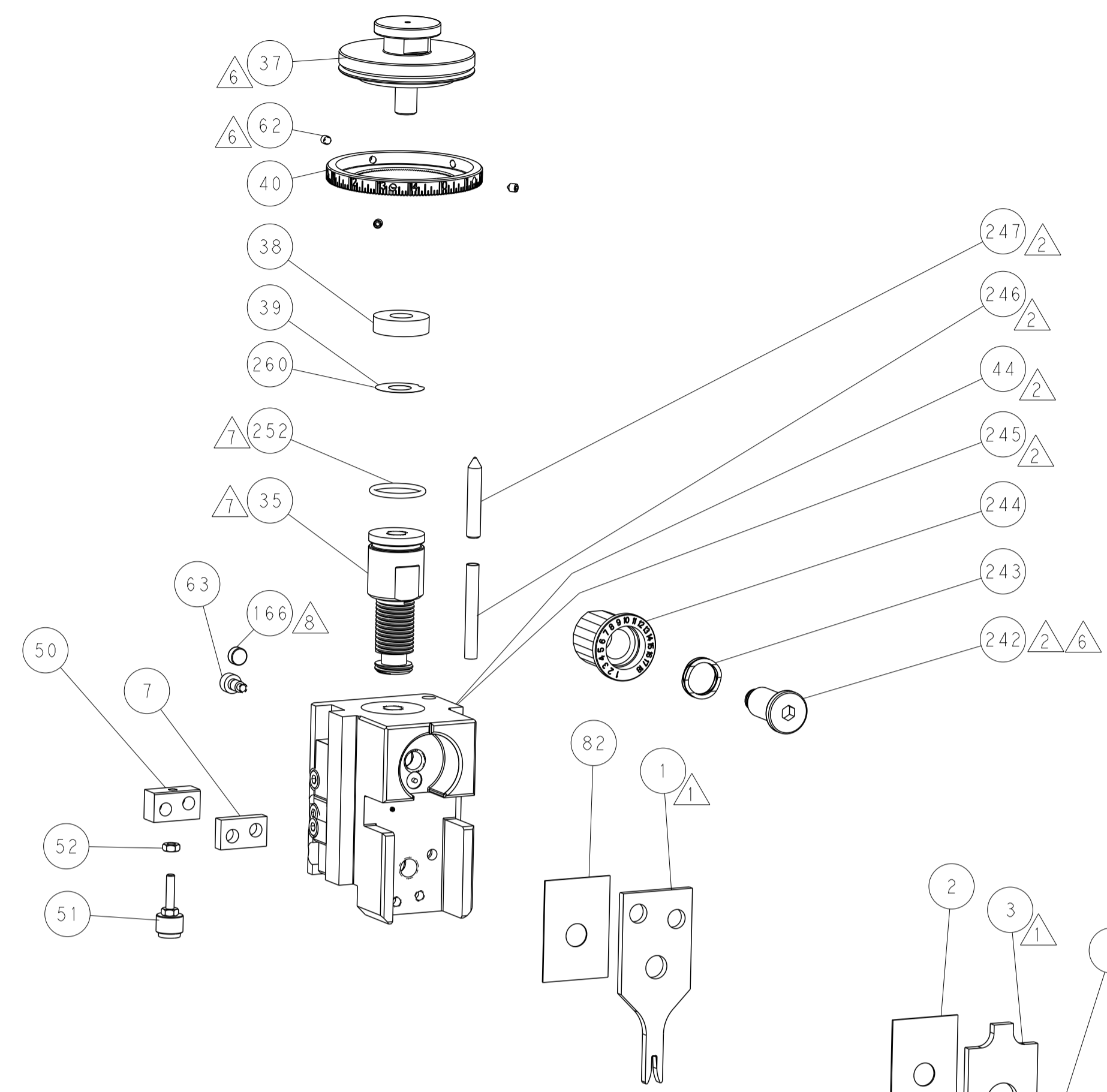
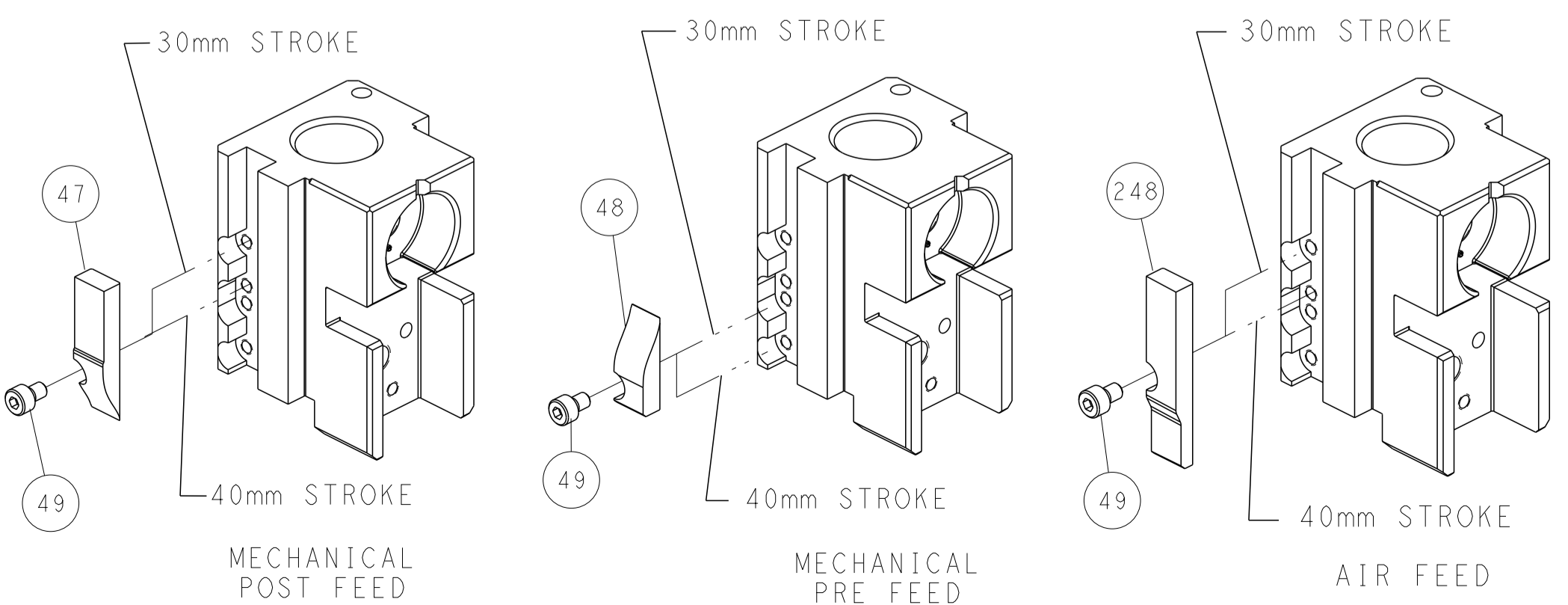
### PNEUMATIC



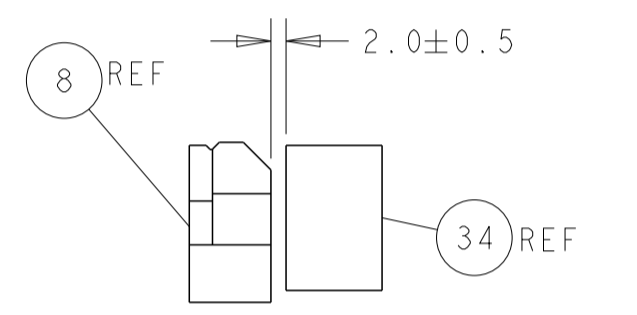
### SERVO LATCH PLATE



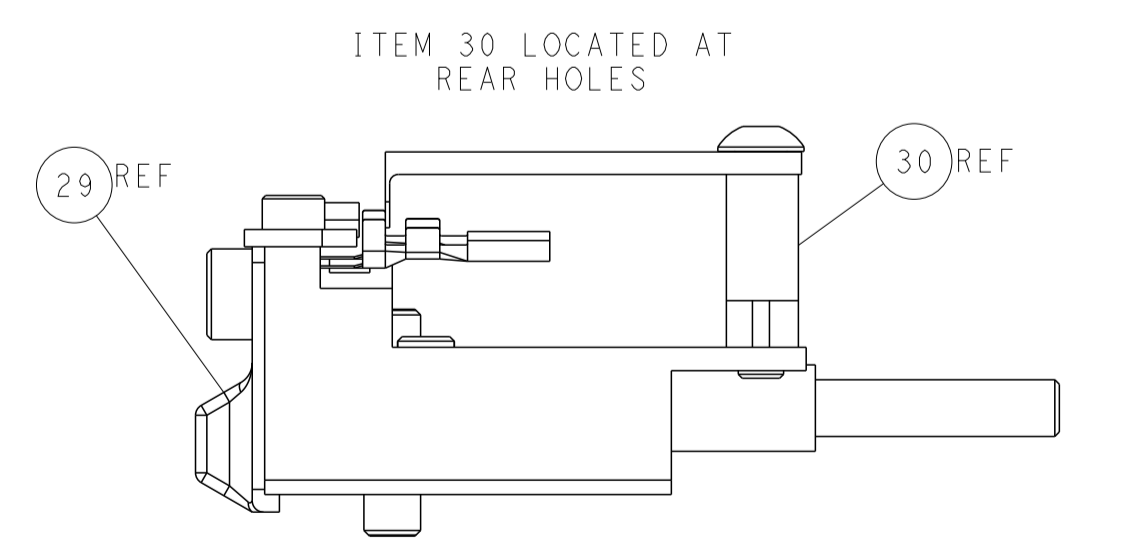
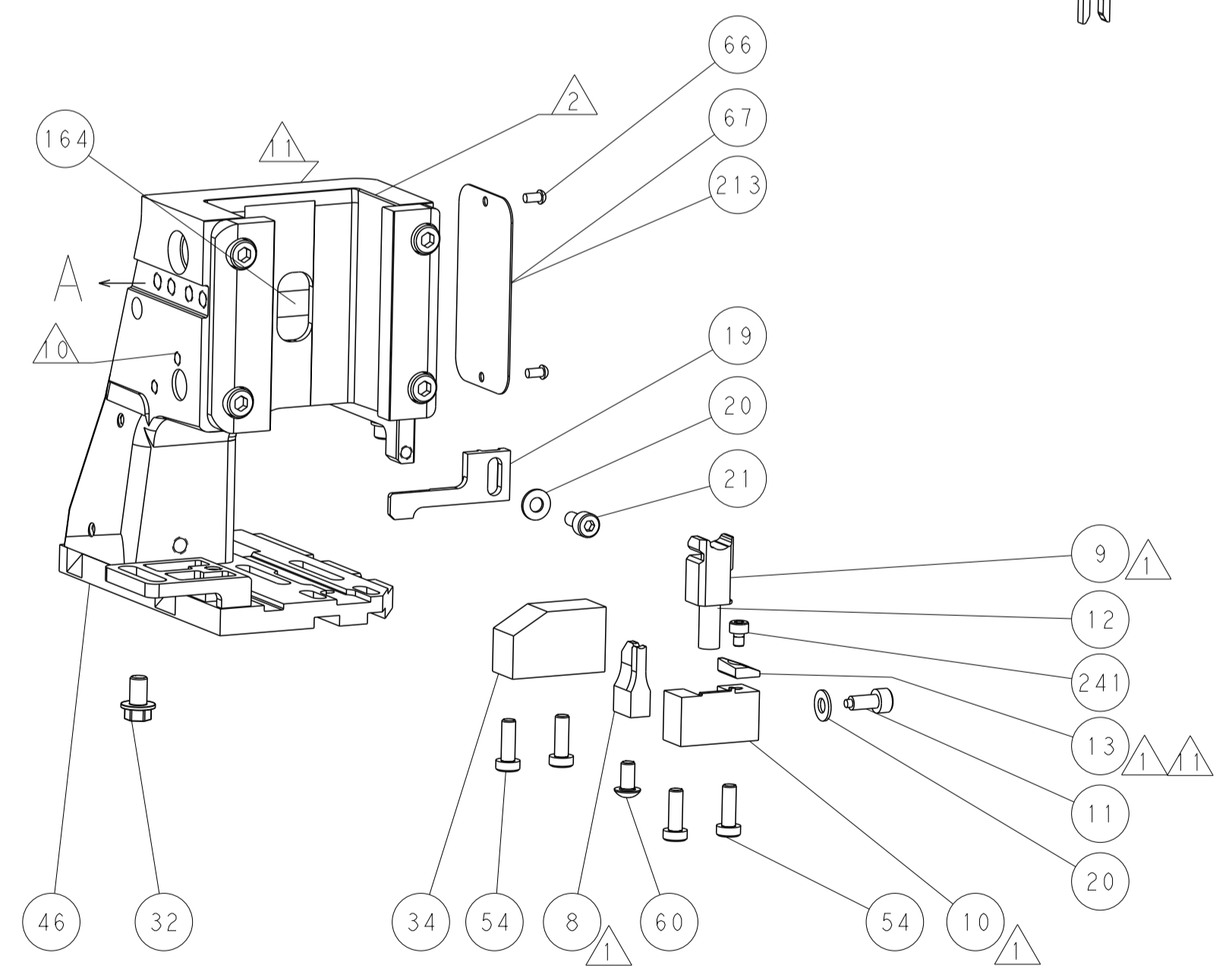
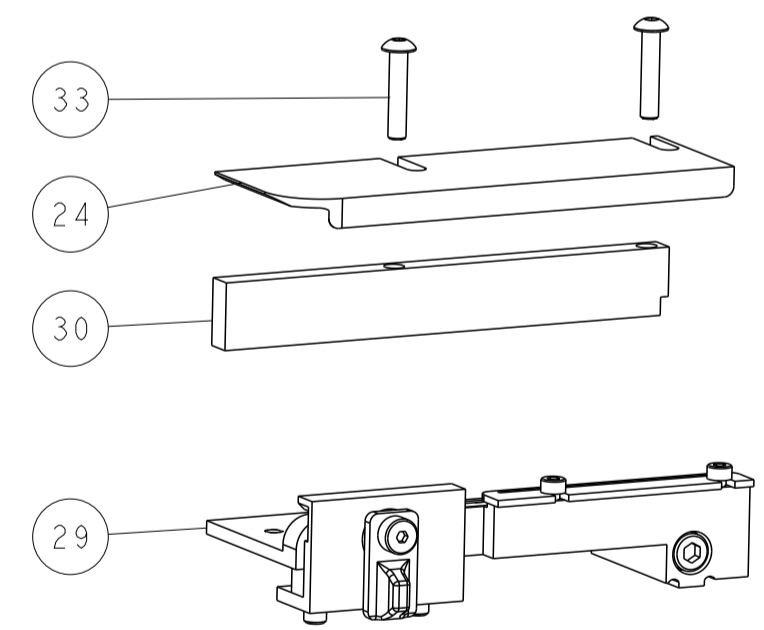
### CAM POSITIONS



SHEAR DEPRESSOR DETAIL



TERMINAL SUPPORT LOCATION



FEED TRACK POSITION GUIDE BY INSULATION BARREL

**ATLANTIC VERSION**  
 Shown on sheets 1 of 4 & 2 of 4  
 (Pacific version shown on sheets 3 of 4 & 4 of 4)

DIMENSIONS: mm		TOLERANCES UNLESS OTHERWISE SPECIFIED: 0 PLC ± 1 PLC ± 2 PLC ± 3 PLC ± 4 PLC ± ANGLES ° ±		DWN: HOFFNER 29MAY2014 CHK: T. ELBIN 30MAY2014 APVD: T. ELBIN 30MAY2014		NAME: Ocean Side Feed Applicator	
MATERIAL:		FINISH:		WEIGHT:		SIZE: A1 CAGE CODE: 00779 DRAWING NO: C=2266298	
Customer Accessible Production Drawing				SCALE: 1:2		SHEET 2 OF 4 REV B1	

PACIFIC VERSION TERMINATOR INTERFACE ADAPTER	PART NUMBER	REVISION	DESCRIPTION	FEED TYPE	APPLICATOR STYLE CONVERSION CHART						
					CONVERT TO	PART NUMBERS REQUIRED					
	2-2266298-1	B	FINE CRIMP HEIGHT ADJUST	MECHANICAL	PNEUMATIC FEED	2119950-1	1338683-8	5-18022-5	2119641-2	2119799-1	2063440-1
					SERVO LATCH PLATE	2119951-1	-	8-2266298-5	1901094-3	-	2168400-6 (QUANTITY 2)
					SMART APPLICATOR	2161326-1	-	8-2266298-4	-	-	-
	2-2266298-2	B	FINE CRIMP HEIGHT ADJUST	PNEUMATIC	MECHANICAL FEED	2119949-1	1338683-8	5-18022-5	2119653-2	-	-
					SERVO LATCH PLATE	2119951-1	-	8-2266298-5	1901094-3	-	2168400-6 (QUANTITY 2)
					SMART APPLICATOR	2161326-1	-	8-2266298-4	-	-	-
	2-2266298-5	B	FINE CRIMP HEIGHT ADJUST	SERVO LATCH PLATE	MECHANICAL FEED	2119949-1	1338683-8	5-18022-5	2119653-2	-	-
					PNEUMATIC FEED	2119950-1	1338683-8	5-18022-5	2119641-2	2119799-1	2063440-1
	2-2266298-7	B	FINE CRIMP HEIGHT ADJUST	NONE	-	-	-	-	-	-	-
	7-2266298-7	A	CRIMP TOOLING KIT	-	-	-	-	-	-	-	-

APPLICATOR DATA		
CRIMP WIRE	SIZE	TYPE
INSUL	1.78 mm [.070]	F
	3.18 mm [.125]	O
APPLICATOR INSTRUCTIONS 408-10389		

TERMINAL DATA: TE TERMINAL		TE CRIMP SPECIFICATION	
TERMINAL NAME: SINGLE WIRE, MCON MONO 1.2 TERMINAL			
WIRE STRIP LENGTH		TERMINAL INSULATION RANGE	
3.30-3.90 mm [1.30-.154 IN]		Ø1.45-2.10 mm [0.057-.083 IN]	
TERMINAL APPLICATION SPECIFICATION	114-32121	-	-

TERMINALS APPLIED				
TE TERMINAL	TE TERMINAL	TE SEAL	TE SEAL	SEAL INSULATION RANGE
2138597-1	2203830-1	967067-1		Ø 1.4 - 2.1

WIRE SIZE	CRIMP HEIGHT mm [INCH]	CRIMP HEIGHT REFERENCE SETTING
1.00mm2	1.05+/-0.05 [0.41+/-0.02]	8.3
0.75mm2	0.97+/-0.05 [0.38+/-0.02]	9.1

- RECOMMENDED SPARE PARTS
- GREASE BEARING SURFACES LIGHTLY
- 3. LUBRICATE DAILY PER THE APPLICATOR INSTRUCTION SHEET SUPPLIED WITH THE APPLICATOR.
- APPLICATOR SPECIFIC DATA TO BE ENTERED INTO BLANK MEMORY CHIP AT ASSEMBLY. SEE BELOW FOR PART NUMBER:  
 MECHANICAL FEED WITH "SMART APPLICATOR" CONVERSION: 8-2266298-4  
 PNEUMATIC FEED WITH "SMART APPLICATOR" CONVERSION: 8-2266298-4  
 SERVO FEED WITH "FINE CRIMP HEIGHT ADJUST": 8-2266298-5
- 5. ADJUSTMENT OF THE STRIPPER MAY BE REQUIRED WHEN MOVING THE APPLICATOR BETWEEN BENCH AND LEADMAKER APPLICATIONS.
- APPLY PART NUMBER 1-23419-5 LOCTITE TO THREADS OF ITEM 62.  
 APPLY PART NUMBER 2-23419-6 LOCTITE TO THREADS OF ITEM 242.
- GREASE THREADS, GROOVE AND O-RING ON ITEMS 139 & 152.
- MAGNET MUST BE ORIENTED CORRECTLY IN ORDER TO PROPERLY ACTUATE THE COUNTER.
- CRIMP HEIGHT REFERENCE SETTING WAS THE SETTING USED WHEN THE APPLICATOR WAS QUALIFIED AT THE FACTORY. ADJUSTMENT MAY BE NECESSARY WHEN RUNNING APPLICATOR IN THE FIELD.
- SPARE FEED CAM STORAGE LOCATION REFER TO INSTRUCTION SHEET FOR ADDITIONAL INFORMATION.
- TO CONVERT THE APPLICATOR TO A NON-CARRIER CUTTING STYLE, REMOVE ITEM 13 AND ATTACH TO THE LOCATION ON BACK SIDE OF THE HOUSING. REFER TO INSTRUCTION SHEET FOR ADDITIONAL INFORMATION.
- THIS APPLICATOR APPLIES TERMINAL WITH A SEAL.
- APPLY TORQ-SEAL IN ALLEN SOCKET TO FILL HOLE AFTER FLAT HD HAS BEEN ADJUSTED TO CORRECT HEIGHT AT QUALIFICATION. APPLY #1-23419-5 LOC-TITE TO THREADS.

**\*WARNING**  
 ON INSTALLATION, SET WIRE DISC, ITEM 40 TO LARGEST WIRE SIZE SETTING. USE OF SETTINGS BELOW MINIMUM REQUIRED CRIMP HEIGHT SETTING WILL CAUSE DAMAGE TO CRIMP TOOLING.

PACIFIC VERSION  
 Shown on sheets 3 of 4 & 4 of 4  
 (Atlantic version shown on sheets 1 of 4 & 2 of 4)

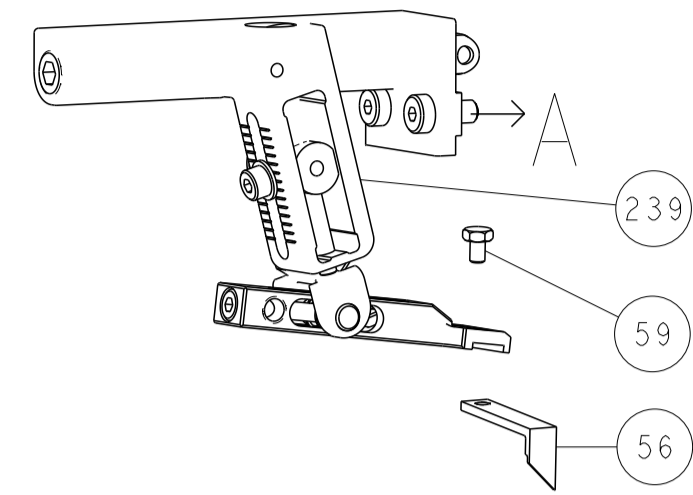
SET UP GAUGE	LOC	DIST	REVISIONS					
2119599-1	A	66	P	LTN	DESCRIPTION	DATE	OWN	APVD
			-	-	SEE SHEET 1	-	-	-

-	1	1	1	1	2119782-1	FINE ADJUST HEAD ASM, PACIFIC STYLE	251
-	-	-	1	-	2119640-1	PUSH ROD, AIR FEED	250
-	-	-	1	-	1803259-1	BUSHING, FLANGED	249
-	1	1	1	1	1-22279-3	SPRING, COMPRESSION	246
-	1	1	1	1	2119082-3	CAM, SNAIL, INSULATION ADJUSTMENT	244
-	1	1	1	1	2079764-1	WASHER, WAVE SPRING, CREST-TO-CREST	243
-	1	1	1	1	2119083-1	RETAINER, INSULATION DIAL	242
-	1	1	1	1	7-18023-7	SCR, SKT HD CAP M3 X 4.0	241
-	-	2	-	-	2168400-6	SHCS, LOW HEAD, RoHS, M5 X 16	240
-	-	-	-	1	2119580-1	MECHANICAL FEED ASSEMBLY	239
-	-	-	-	1	2063440-1	AIR FEED MODULE	238
-	-	1	-	-	2119740-2	TAG, IDENTIFICATION	213
-	-	1	-	-	1901094-3	SPACER, FEEDER	198
-	-	-	2	-	21045-3	RING, RETAIN, EXTERN, 3/16 CRESCENT	172
-	1	1	1	1	994969-1	MAGNET, RARE EARTH HIGH ENERGY	166
-	REF	REF	REF	REF	994970-2	COUNTER, MAGNETIC	164
-	-	-	1	-	240638-1	SPRING, FEED FINGER	163
-	1	1	1	1	8-21084-1	O-RING, .801 ID, .070 DIA, MAT.	152
-	-	-	1	-	2119641-2	FEED CAM, AIR FEED	151
-	1	1	1	1	2119798-2	DETENT PIN	145
-	1	1	1	1	2079383-8	SCR, BHSC, RoHS (M4 X 16)	144
-	4	4	4	4	2168400-5	SHCS, LOW HEAD, RoHS, M4 X 20	143
-	-	-	-	1	2119653-2	FEED CAM, POST FEED	142
-	1	1	1	1	1-2119656-0	APPLICATOR BASIC ASSEMBLY, SF	141
-	1	1	1	1	2119650-1	RAM, ASIAN STYLE, SIDE FEED	140
-	1	1	1	1	2119092-2	BOLT, ADJUSTMENT	139
-	-	-	1	-	3-23627-7	PIN, RETAIN, GRVD, 3/16 X .854	137
-	-	-	1	-	2119799-1	HOLDER, FEED FINGER, AF	136
-	-	REF	-	-	SEE NOTE 4	MEMORY CHIP, PROGRAMMED	135
-	-	1	-	-	1633743-1	SERVO FEED LATCH ASM	133
-	-	REF	-	-	2119944-1	FEED FINGER ASSEMBLY, SF	117
-	1	1	1	1	455888-4	SPACER, CRIMPER	82
-	1	1	1	1	2119956-1	DOCUMENTATION PACKAGE	71
-	1	-	1	1	2119740-1	TAG, IDENTIFICATION	67
-	2	2	2	2	2168078-1	SCREW, DRIVE, RH, RoHS, 2 x .188	66
-	1	1	1	1	2119793-1	LIMITER, ADJUSTMENT BOLT	63
-	3	3	3	3	992763-5	SCR, SET, SOC, CONE POINT, M3 X 4.0	62
-	-	-	1	1	5-18022-5	SCR, HEX HD CAP, M4 X 6.0	59
-	1	1	1	1	985575-3	SCR, FLT SKT HD CAP M3 X 10.0	57
-	-	-	1	1	1338683-8	FEED PAWL	56
-	2	2	2	2	2168083-8	SCR, SKT HD CAP, RoHS, M4 X 16	53
-	1	1	1	1	5018030-1	NUT, HEX, REG, RoHS, M3	52
-	1	1	1	1	811242-5	BUMPER, HOLD DOWN	51
-	1	1	1	1	690753-2	SPACER, TONKER	50
-	-	-	1	2	18023-9	SCR, SKT HD CAP M4 X 6.0	49
-	-	-	-	1	2119652-1	FEED CAM, PRE FEED	48
-	1	1	1	1	2079383-7	SCR, BHSC, RoHS (M8 X 25)	41
-	1	1	1	1	2119645-1	DISC, NUMBERED FA WIRE ADJUSTMENT	40
-	1	1	1	1	2119957-1	APPLICATOR SHIM PACK	39
-	1	1	1	1	2119644-1	RAM WASHER, PRECISION	38
-	1	1	1	1	2-1752356-0	SUPPORT, TERMINAL	34
-	2	2	2	2	2079383-5	SCR, BHSC, RoHS (M4 X 20)	33
-	1	1	1	1	2161328-1	HEX HEAD, FLANGED, M5 X 8mm LONG	32
-	1	1	1	1	1-1320908-2	SPACER, STRIP GUIDE	30
-	1	1	1	1	2119959-1	ASSEMBLY, STRIP GUIDE	29
-	1	1	1	1	455888-3	SPACER, CRIMPER	28
-	1	1	1	1	1320928-6	STRIP GUIDE	24
-	1	1	1	1	2168083-2	SCR, SKT HD CAP, RoHS, M4 X 8.0	21
-	2	2	2	2	1-18028-2	WASHER, FLAT, REG M4	20
-	1	1	1	1	2119533-1	STRIPPER, SIDE FEED	19
-	1	1	1	1	2119806-1	INSERT, SHEAR	13
-	1	1	1	1	3-22280-3	SPRING, COMPRESSION	12
-	1	1	1	1	1-356885-4	STOP, SHEAR	11
-	1	1	1	1	2119805-1	SHEAR HOLDER, FRONT	10
-	1	1	1	1	318707-1	FLOATING SHEAR, FRONT	9
-	1	1	1	1	2-1633919-6	ANVIL, COMBINATION	8
-	1	1	1	1	240641-4	SPACER	7
-	-	-	-	-	-	-	6
-	1	1	1	1	2119781-2	DEPRESSOR, SHEAR	5
-	1	1	1	1	2-238011-1	BLOCK, CRIMPER SPACER	4
-	1	1	1	1	3-1633996-9	CRIMPER, INSULATION SPECIAL	3
-	1	1	1	1	455888-5	SPACER, CRIMPER	2
-	1	1	1	1	3-456404-5	CRIMPER, WIRE PREMIUM	1

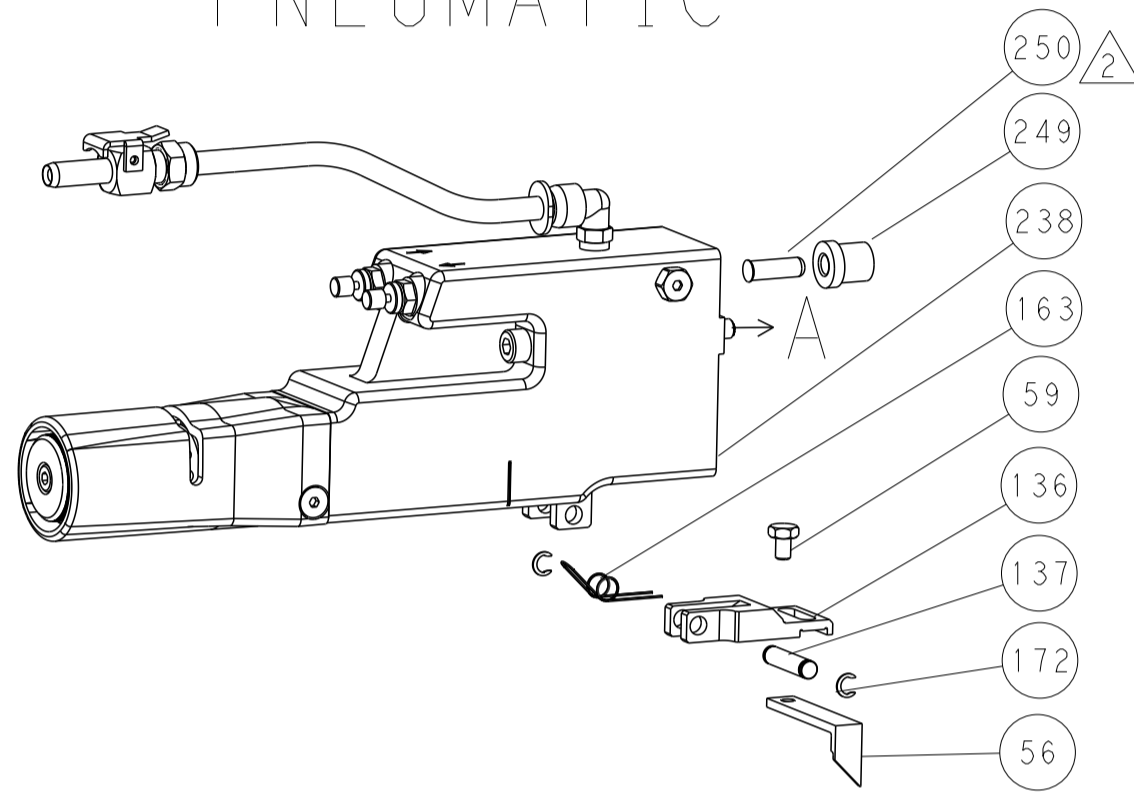
DIMENSIONS:		TOLERANCES UNLESS OTHERWISE SPECIFIED:		APVD		NAME	
mm	0 PLC ±	1 PLC ±	2 PLC ±	3 PLC ±	4 PLC ±	5 PLC ±	ANGLES FINISH
				I. ELBIN		Ocean Side Feed Applicator	
MATERIAL				WEIGHT		SIZE CAGE CODE DRAWING NO RESTRICTED TO	
				A1 00779		©=2266298	
				Customer Accessible Production Drawing		SCALE 1:2 SHEET 3 OF 4 REV B1	

LOC		DIST		REVISIONS			
A	66	P	LTM	DESCRIPTION	DATE	OWN	APVD
		-		SEE SHEET 1			

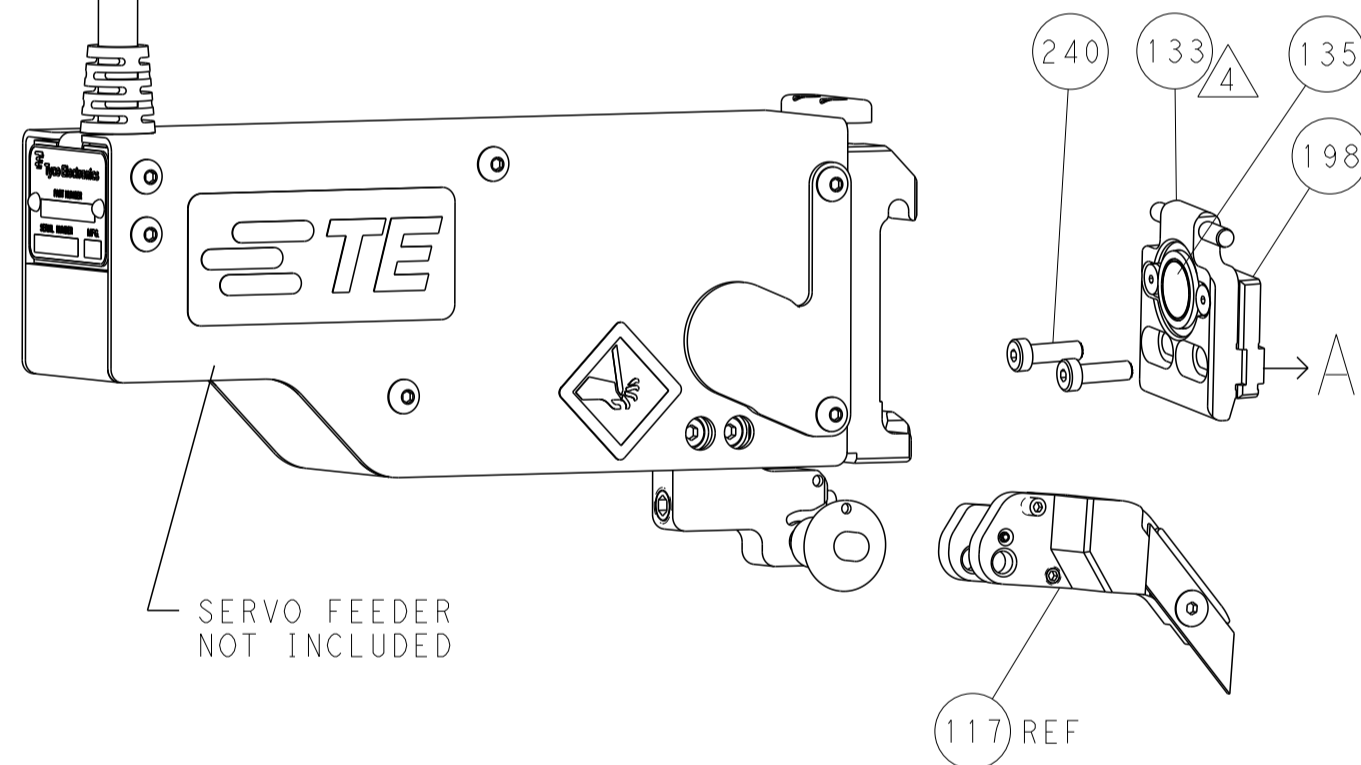
# FEED TYPE MECHANICAL



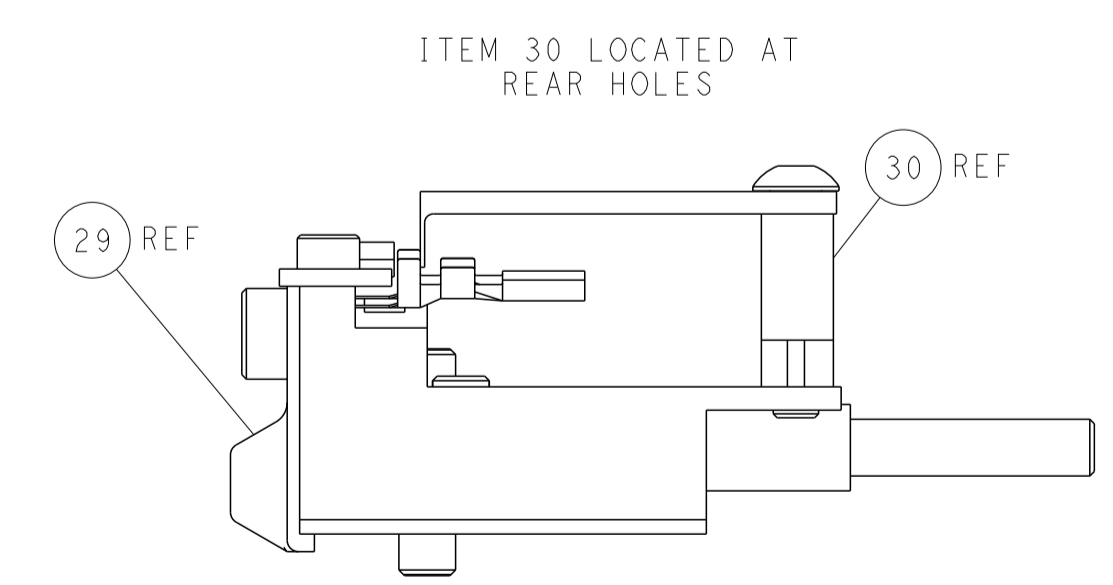
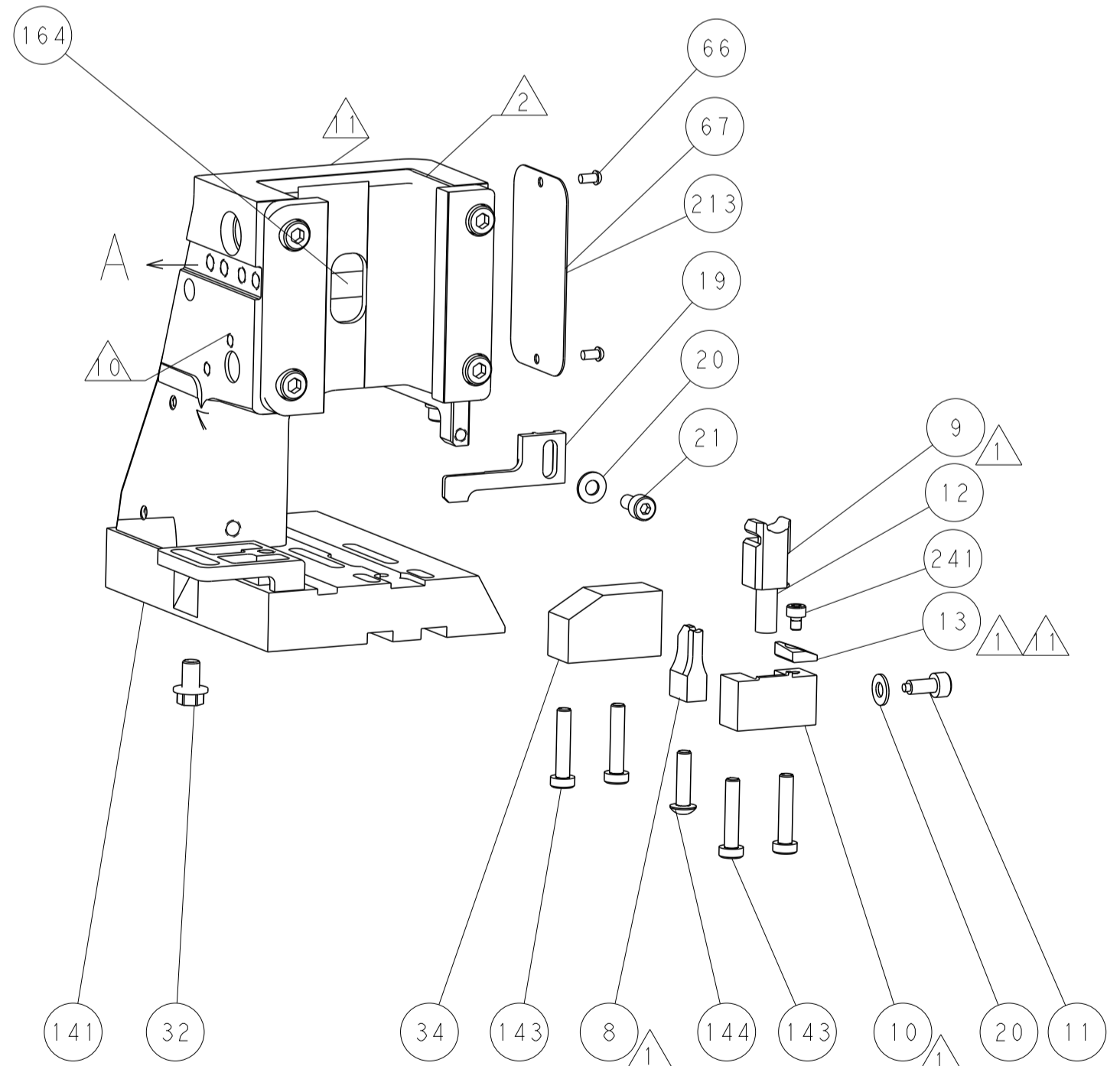
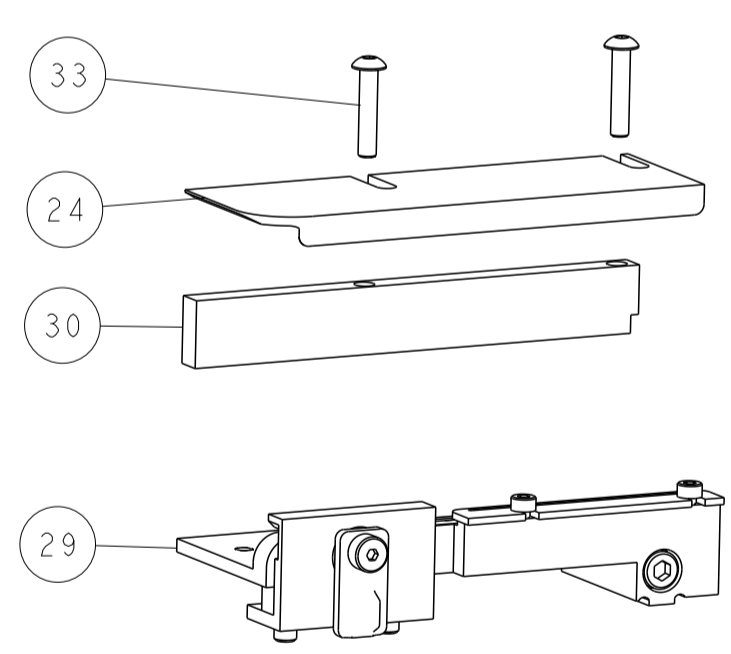
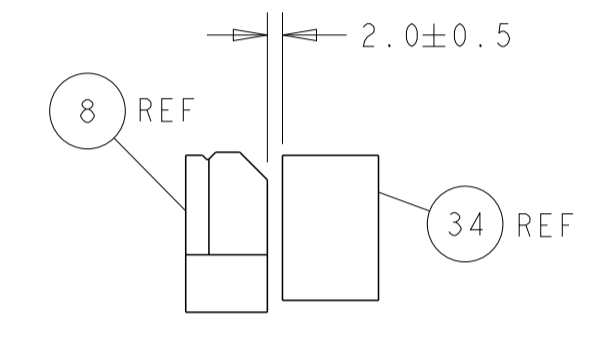
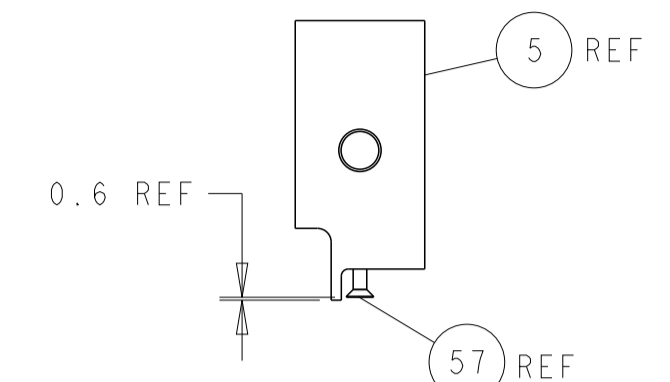
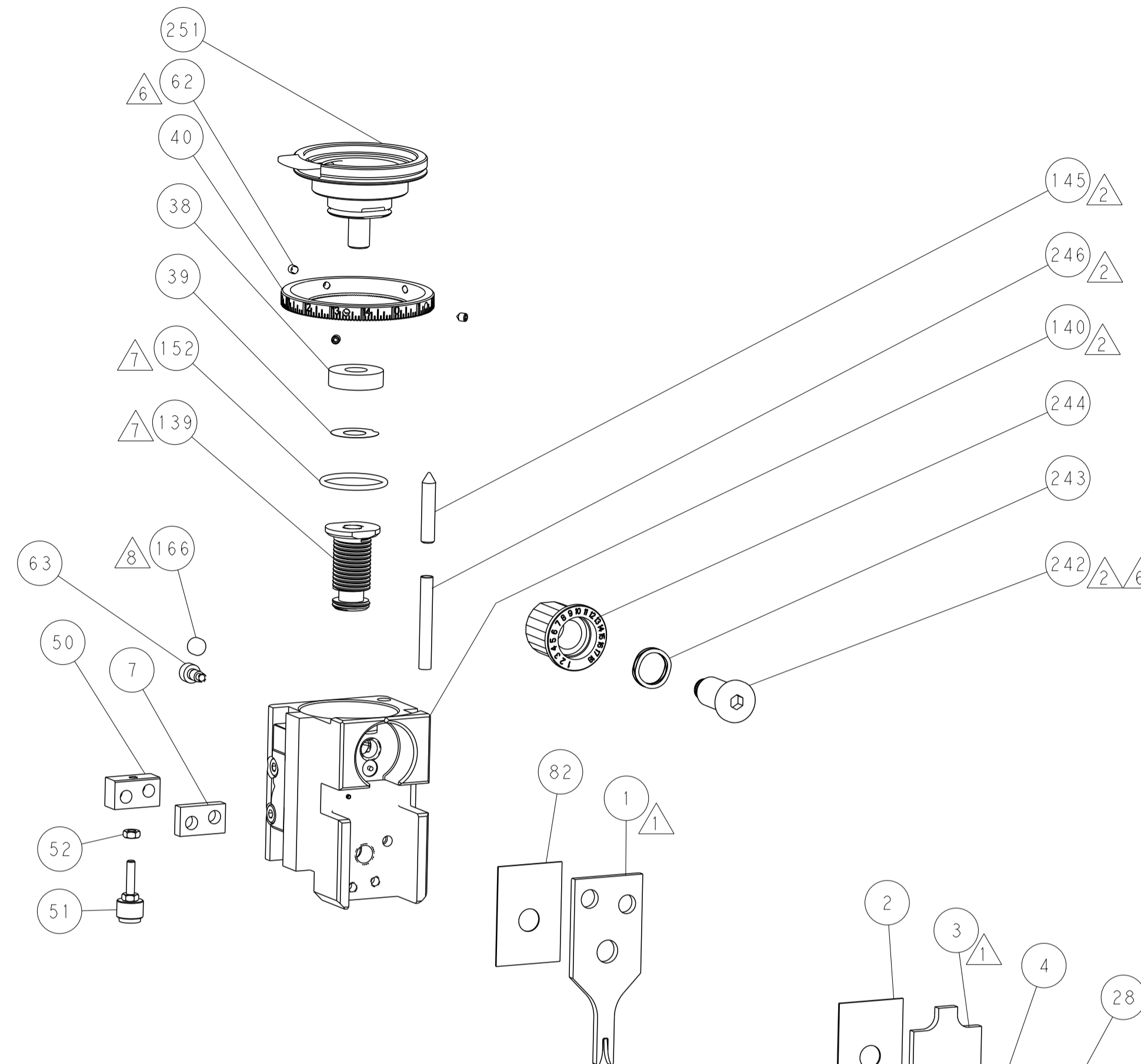
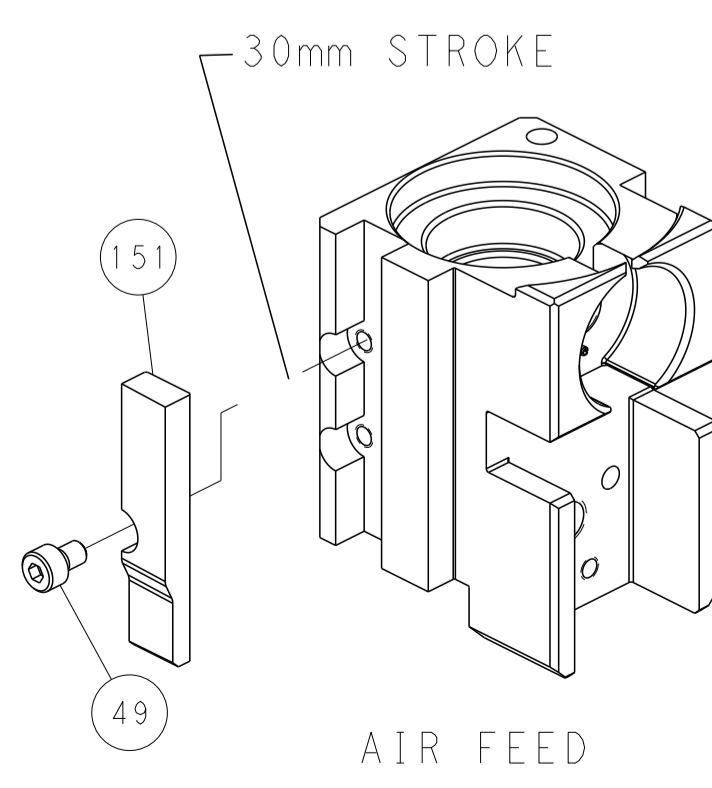
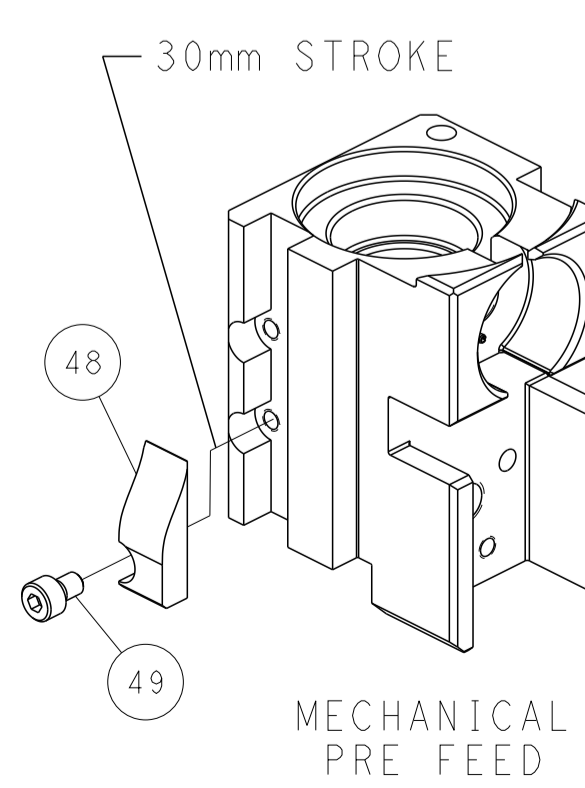
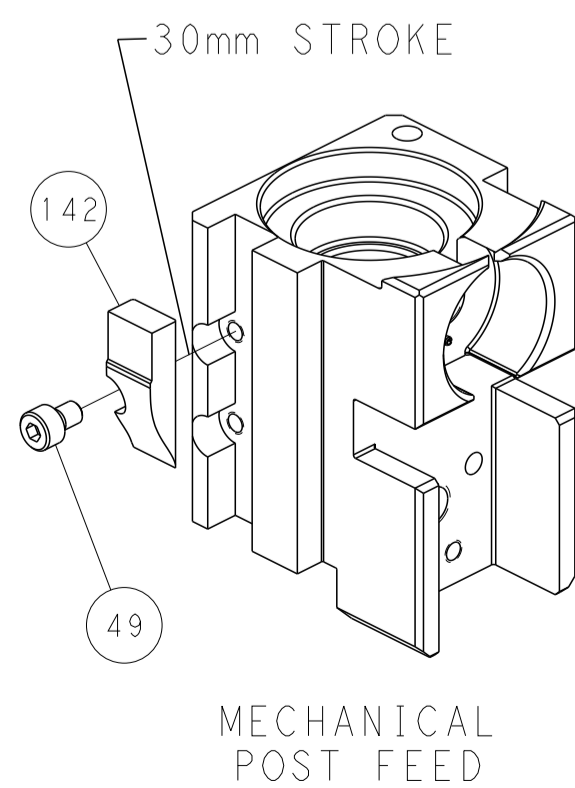
# PNEUMATIC



# SERVO LATCH PLATE



# CAM POSITIONS



**PACIFIC VERSION**  
 Shown on sheets 3 of 4 & 4 of 4  
 (Atlantic version shown on sheets 1 of 4 & 2 of 4)

DIMENSIONS:		TOLERANCES UNLESS OTHERWISE SPECIFIED:		DWN: HOFFNER 29MAY2014		TE Connectivity	
mm	0 PLC ±	1 PLC ±	2 PLC ±	3 PLC ±	4 PLC ±	Harrisburg, PA 17105-3608	
MATERIAL:		FINISH:		APVD: T. ELBIN 30MAY2014		NAME: Ocean Side Feed Applicator	
				CAGE CODE: A1 00779		DRAWING NO: C=2266298	
				WEIGHT:		SCALE: 1:2	
				Customer Accessible Production Drawing		SHEET 4 OF 4 REV B1	