



Chipsmall Limited consists of a professional team with an average of over 10 year of expertise in the distribution of electronic components. Based in Hongkong, we have already established firm and mutual-benefit business relationships with customers from,Europe,America and south Asia,supplying obsolete and hard-to-find components to meet their specific needs.

With the principle of “Quality Parts,Customers Priority,Honest Operation,and Considerate Service”,our business mainly focus on the distribution of electronic components. Line cards we deal with include Microchip,ALPS,ROHM,Xilinx,Pulse,ON,Everlight and Freescale. Main products comprise IC,Modules,Potentiometer,IC Socket,Relay,Connector.Our parts cover such applications as commercial,industrial, and automotives areas.

We are looking forward to setting up business relationship with you and hope to provide you with the best service and solution. Let us make a better world for our industry!



## Contact us

Tel: +86-755-8981 8866 Fax: +86-755-8427 6832

Email & Skype: info@chipsmall.com Web: www.chipsmall.com

Address: A1208, Overseas Decoration Building, #122 Zhenhua RD., Futian, Shenzhen, China



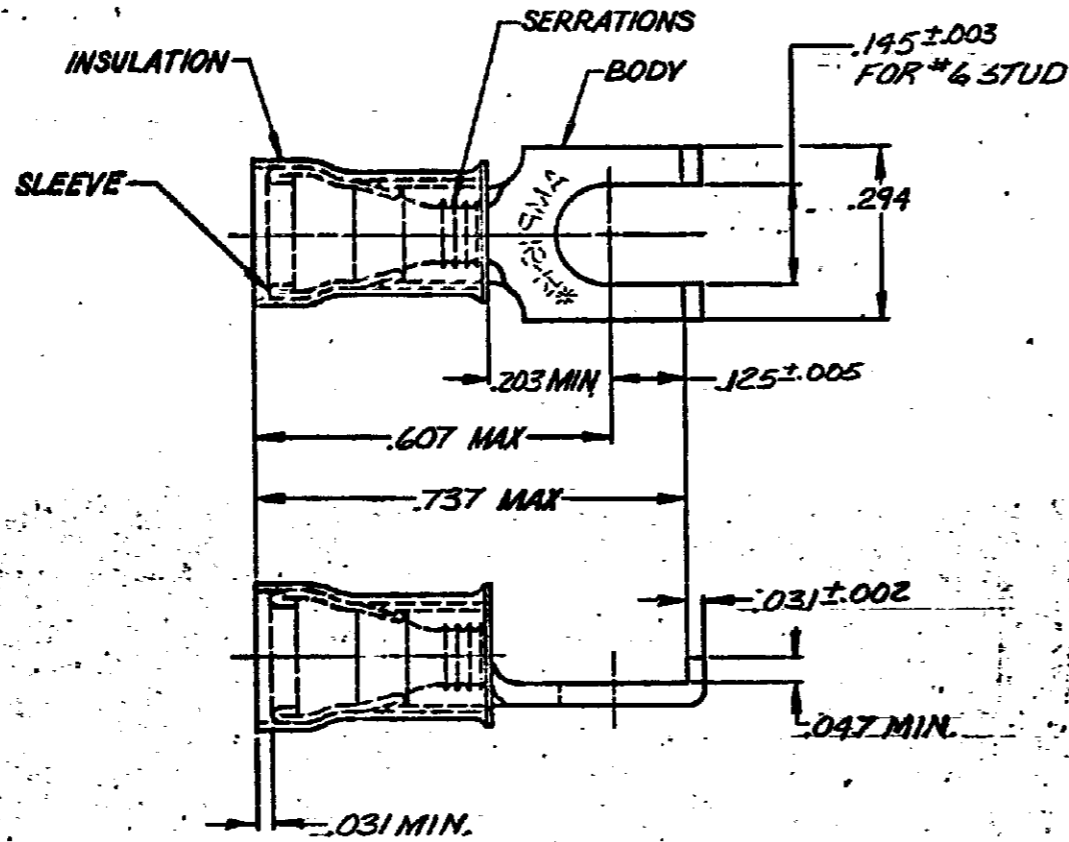
DRAWING MADE IN THIRD ANGLE PROJECTION

THIS DRAWING IS UNPUBLISHED. RELEASED FOR PUBLICATION

© COPYRIGHT

LOC 6 DIST 14

REVISIONS						
P	F	ZONE	LTR	DESCRIPTION	DATE	APPROVED
			P1	REVISED PER ECO-11-005294	11APR11	HMR



QTY	PACKAGE TYPE	PART NO.	
—	LOOSE PIECE	320861	
5,000	ON TAPE, REEL	2-	-1
—	LOOSE PIECE	2-	-2
5,000	ON TAPE, REEL	2-	-3
<del>1,000</del>	<del>ON TAPE, LG. BOX</del>	<del>2-</del>	<del>5</del>
100	LOOSE PC, BOX	8-320861-	1

OBSELETE

WIRE INS. DIA.	MATERIAL AND FINISH	PART NO
.115 TO .170	BODY: COPPER QQ-C-576 TIN PL MIL-T-10727	8-320861-1
.105 TO .150	SLEEVE: COPPER QQ-C-576 TIN PL MIL-T-10727	2- -3
.115 TO .170	INSULATION: NYLON COLOR: BLUE	2- -2
.115 TO .170		2- -1
		320861

UNLESS OTHERWISE SPECIFIED DIMENSIONS ARE IN INCHES. TOLERANCES ON: DECIMALS: .008 ANGLES: 2	CONTRACT NO	TE Connectivity	
	DR: P. Fortney 7-29-85	NAME: TERMINAL, PIDG, 11YLO11 FLANGED SPADE 16-14	
MATERIAL: SEE TABLE	APPD: [Signature]	SIZE: B	FSCM NO: 00779
FINISH: SEE TABLE	APPD: [Signature]	DRAWING NO: 320861	SCALE: NTS
	OTHER APPD:	SHEET: —	

CUSTOMER DRAWING