



Chipsmall Limited consists of a professional team with an average of over 10 year of expertise in the distribution of electronic components. Based in Hongkong, we have already established firm and mutual-benefit business relationships with customers from,Europe,America and south Asia,supplying obsolete and hard-to-find components to meet their specific needs.

With the principle of “Quality Parts,Customers Priority,Honest Operation,and Considerate Service”,our business mainly focus on the distribution of electronic components. Line cards we deal with include Microchip,ALPS,ROHM,Xilinx,Pulse,ON,Everlight and Freescale. Main products comprise IC,Modules,Potentiometer,IC Socket,Relay,Connector.Our parts cover such applications as commercial,industrial, and automotives areas.

We are looking forward to setting up business relationship with you and hope to provide you with the best service and solution. Let us make a better world for our industry!



Contact us

Tel: +86-755-8981 8866 Fax: +86-755-8427 6832

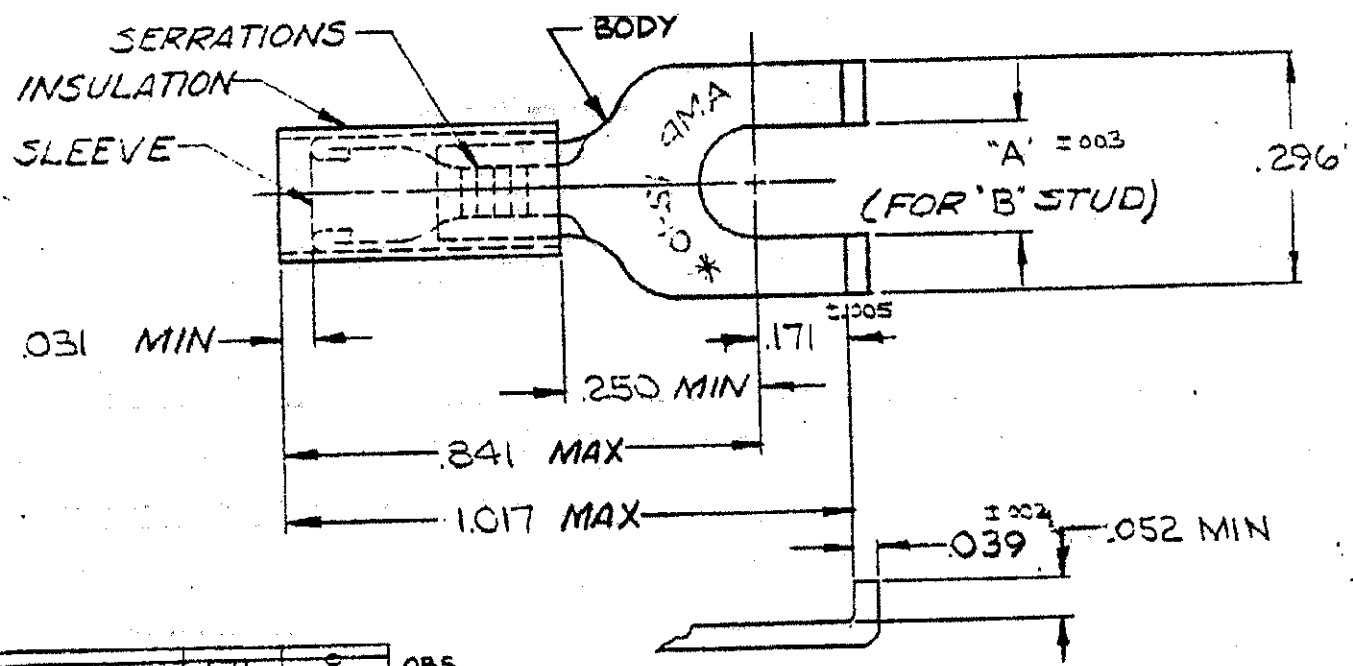
Email & Skype: info@chipsmall.com Web: www.chipsmall.com

Address: A1208, Overseas Decoration Building, #122 Zhenhua RD., Futian, Shenzhen, China



DRAWING MADE IN AMERICAN PROJECTION

REVISIONS			
LTR	DESCRIPTION	DATE	APPROVED
K1	REVISED PER ECO-11-005294	11APR11	HMR



1-325150-0	.171	S	OBS.
1-325150-0	.145	G	
325150			
PART NO.	"A"	"B"	

FOR .150 TO .250 WIRE INS. DIA.

1	WIRE TERMINAL	1-325150-0	SLEEVE: COPPER (QQ-C-576) BODY: COPPER (QQ-C-576) TIN PL (MIL-T-10727) INSULATION: NYLON COLOR: YELLOW
1	325150 ON TAPE	1-325150-0	
50	LOOSE PC. BOX	3-325150-2	
1	WIRE TERMINAL	325150	
MATERIAL & FINISH			
QTY DESCRIPTION PART NO		MATERIAL & FINISH	
UNLESS OTHERWISE SPECIFIED DIMENSIONS ARE IN INCHES TOLERANCES ON: DECIMALS = .008 ANGLES = 5°		TE Connectivity	
MATERIAL SEE TABLE		WIRE TERMINAL P.I.D.G. - FLANGED SPADE WIRE SIZE: 12-10	
CONTRACT NO. 1 DR. 5-13-70 CHK. 5-13-70 APPD. L. Wabel 5-13-70 REL. 5-14-70 DSGN/APPD. U OTHER APPD.		SIZE A	CODE IDENT NO. 00779
		NUMBER 325150	CUSTOMER DRAWING