



Chipsmall Limited consists of a professional team with an average of over 10 year of expertise in the distribution of electronic components. Based in Hongkong, we have already established firm and mutual-benefit business relationships with customers from,Europe,America and south Asia,supplying obsolete and hard-to-find components to meet their specific needs.

With the principle of "Quality Parts,Customers Priority,Honest Operation,and Considerate Service",our business mainly focus on the distribution of electronic components. Line cards we deal with include Microchip,ALPS,ROHM,Xilinx,Pulse,ON,Everlight and Freescale. Main products comprise IC,Modules,Potentiometer,IC Socket,Relay,Connector.Our parts cover such applications as commercial,industrial, and automotives areas.

We are looking forward to setting up business relationship with you and hope to provide you with the best service and solution. Let us make a better world for our industry!



Contact us

Tel: +86-755-8981 8866 Fax: +86-755-8427 6832

Email & Skype: info@chipsmall.com Web: www.chipsmall.com

Address: A1208, Overseas Decoration Building, #122 Zhenhua RD., Futian, Shenzhen, China



4

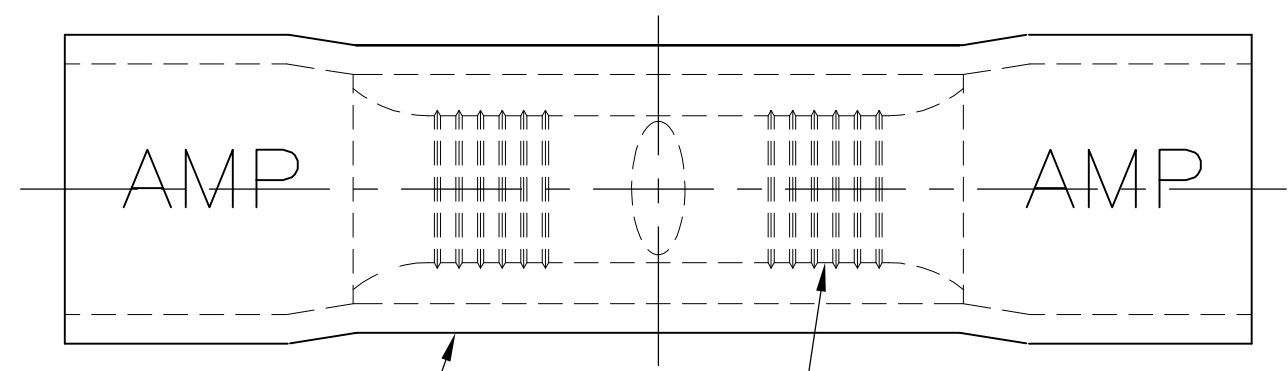
3

2

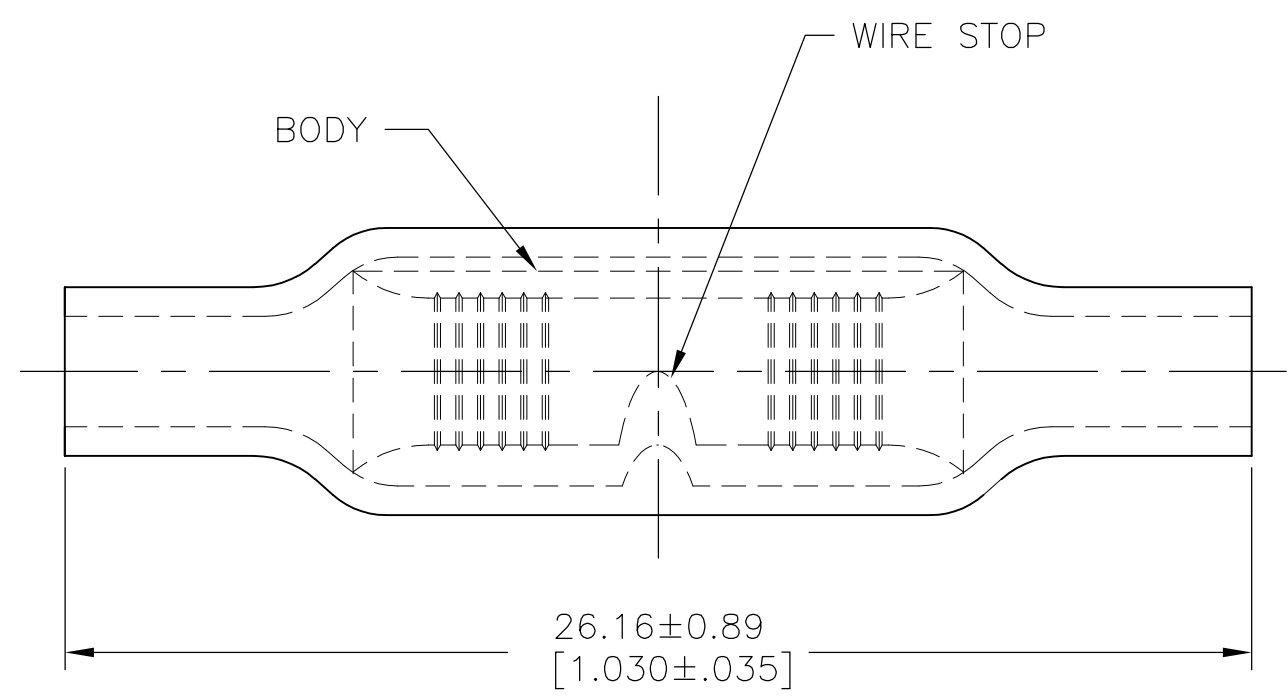
1

THIS DRAWING IS UNPUBLISHED. RELEASED FOR PUBLICATION
 © COPYRIGHT - By - ALL RIGHTS RESERVED.

LOC		DIST		REVISIONS			
P	LTR	DESCRIPTION		DATE	DWN	APVD	
	G1	REDRAW PER ECO-11-020548		02FEB12	KH	DR	



1 FOR 6.22[.245] X 3.43[.135] MAX OVALED WIRE INSULATION DIA



QTY	PACKAGE TYPE	MATERIAL & FINISH	PART NO
2000	ON TAPE	INSULATION: PVC COLOR: BLUE BODY: COPPER PER ASTM B152 TIN PLATE PER ASTM B545	1-34204-0
100	LOOSE PC,BOX		8-34204-1
1000	LOSE PIECE		34204

THIS DRAWING IS A CONTROLLED DOCUMENT.

DIMENSIONS: mm [INCHES]	TOLERANCES UNLESS OTHERWISE SPECIFIED:
	0 PLC ± -
	1 PLC ± -
	2 PLC ± -
	3 PLC ± -
	4 PLC ± -
	ANGLES ± -
MATERIAL	FINISH
-	-

DWN KIRAN HOLAL 02FEB12	TE Connectivity NAME WIRE SPLICE PLASTI-GRIP-BUTT-OVALED WIRE SIZE:16-14	RESTRICTED TO
CHK ROHDE DANIEL 02FEB12		-
APVD ROHDE DANIEL 02FEB12		SIZE A3
PRODUCT SPEC -		CAGE CODE 00779
APPLICATION SPEC -	DRAWING NO C-34204	SCALE 6:1
WEIGHT -	CUSTOMER DRAWING	SHEET 1 OF 1
		REV G1