



Chipsmall Limited consists of a professional team with an average of over 10 year of expertise in the distribution of electronic components. Based in Hongkong, we have already established firm and mutual-benefit business relationships with customers from,Europe,America and south Asia,supplying obsolete and hard-to-find components to meet their specific needs.

With the principle of “Quality Parts,Customers Priority,Honest Operation,and Considerate Service”,our business mainly focus on the distribution of electronic components. Line cards we deal with include Microchip,ALPS,ROHM,Xilinx,Pulse,ON,Everlight and Freescale. Main products comprise IC,Modules,Potentiometer,IC Socket,Relay,Connector.Our parts cover such applications as commercial,industrial, and automotives areas.

We are looking forward to setting up business relationship with you and hope to provide you with the best service and solution. Let us make a better world for our industry!



Contact us

Tel: +86-755-8981 8866 Fax: +86-755-8427 6832

Email & Skype: info@chipsmall.com Web: www.chipsmall.com

Address: A1208, Overseas Decoration Building, #122 Zhenhua RD., Futian, Shenzhen, China



THIS DRAWING IS UNPUBLISHED.

RELEASED FOR PUBLICATION

,19 .

© COPYRIGHT 19

BY AMP INCORPORATED. ALL RIGHTS RESERVED.

LOC

DIST

REVISIONS

G

14

P

LTR

DESCRIPTION

DATE

DWN

APVD

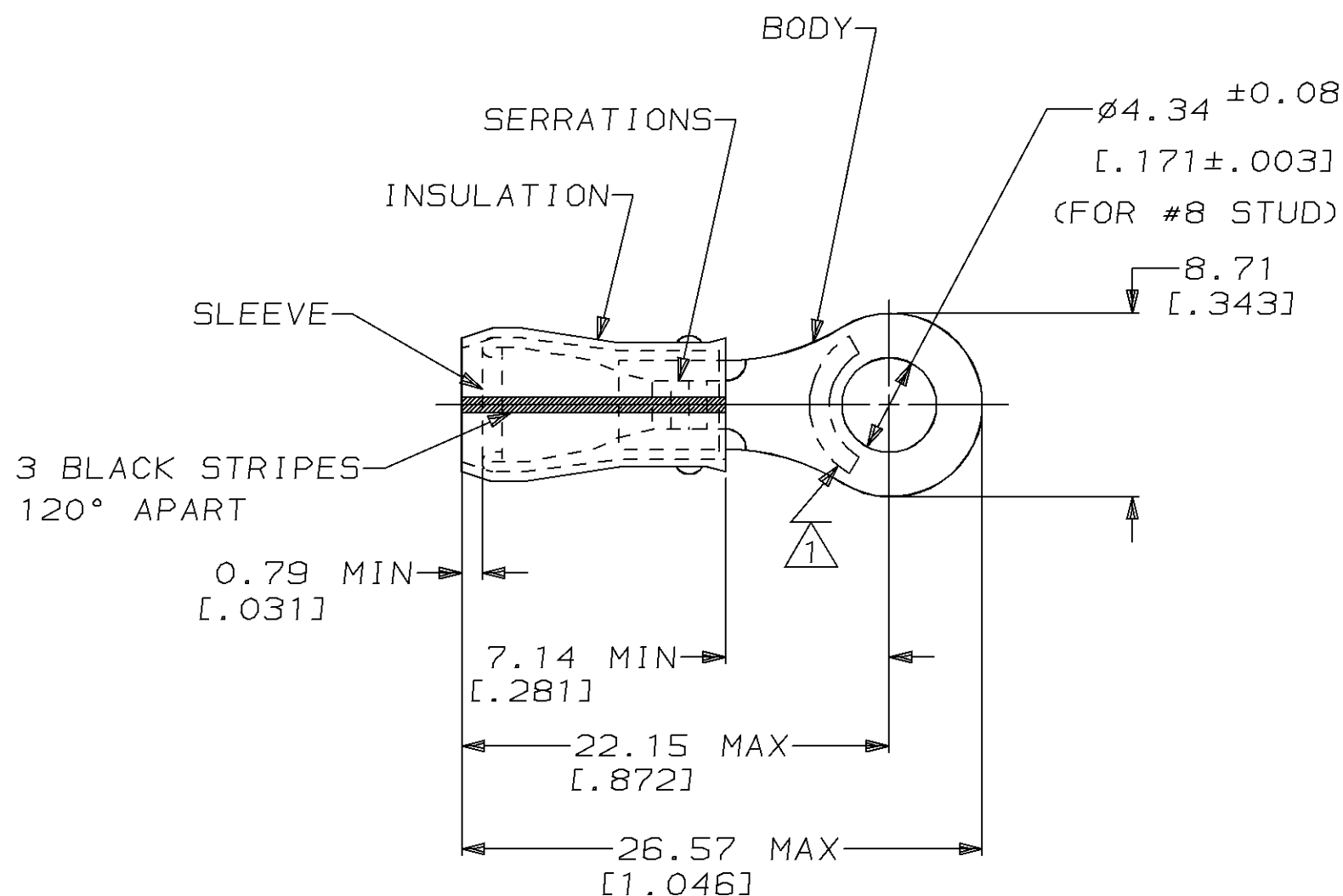
F

REV & REDRAW / 0720-0575-95

28SEP95

MLE

NB



- △ STAMP AMP 16-14 HD* APPROX AS SHOWN
2. WIRE INSUL DIA, 3.81-6.35 [.150-.250]
3. TONGUE MATERIAL THK, 1.22±0.05 [.048±.002]

---	-----	-----
50	LOOSE PIECE, BOX	8-35106-2
2500	ON TAPE, REEL	2-35106-1
500	LOOSE PIECE	35106
QTY	PACKAGE TYPE	PART NO

AMP INCORPORATED
CUSTOMER SERVICE SYSTEMFOR ADDITIONAL
PRODUCT INFORMATION OR
COPIES OF DRAWINGS
AND TECHNICAL DOCUMENTSPRODUCT INFORMATION CENTER
1-800-522-6752FOR APPLICATION
TOOLING INFORMATIONTOOLING ASSISTANCE CENTER
1-800-722-1111

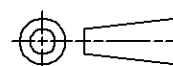
FOR ORDER ENTRY

1-800-526-5142

MAX RECOMMENDED OPERATING
TEMPERATURE:
105°C [221°F]VOLTAGE RATING:
300 V MAX
-CIRCULAR MIL AREA:
1.04mm²-2.62mm² [2050-5180]THIS DRAWING IS A CONTROLLED DOCUMENT FOR AMP INCORPORATED.
IT IS SUBJECT TO CHANGE AND THE CONTROLLING ENGINEERING
ORGANIZATION SHOULD BE CONTACTED FOR THE LATEST REVISION.

DIMENSIONS:

mm [in]

MATERIAL
BODY, SLV, COPPER PER ASTM B 152
INSUL, NYLON, COLOR, YELLOWTOLERANCES UNLESS
OTHERWISE SPECIFIED:0 PLC ±-
1 PLC ±-
2 PLC ±0.20 [.008]
3 PLC ±-
4 PLC ±-
ANGLES ±-FINISH
BODY & SLV, TIN PLATE
PER MIL-T-10727

DWN /3 T/3. T/

M ELLIS

CHK

C PRESNELL

APVD

N BIRCH

PRODUCT SPEC

UL 486A

APPLICATION SPEC

-

WEIGHT

-

CUSTOMER DRAWING

AMPAMP Incorporated
Harrisburg, PA 17105-3608

NAME

TERMINAL, RING TONGUE, PIDG™,
WIRE SIZE, 16-14 HD AWG

SIZE

A3

CAGE CODE

00779

DRAWING NO

C-35106

SCALE 4:1

SHEET 1 OF 1

REV F