



Chipsmall Limited consists of a professional team with an average of over 10 year of expertise in the distribution of electronic components. Based in Hongkong, we have already established firm and mutual-benefit business relationships with customers from,Europe,America and south Asia,supplying obsolete and hard-to-find components to meet their specific needs.

With the principle of “Quality Parts,Customers Priority,Honest Operation,and Considerate Service”,our business mainly focus on the distribution of electronic components. Line cards we deal with include Microchip,ALPS,ROHM,Xilinx,Pulse,ON,Everlight and Freescale. Main products comprise IC,Modules,Potentiometer,IC Socket,Relay,Connector.Our parts cover such applications as commercial,industrial, and automotives areas.

We are looking forward to setting up business relationship with you and hope to provide you with the best service and solution. Let us make a better world for our industry!



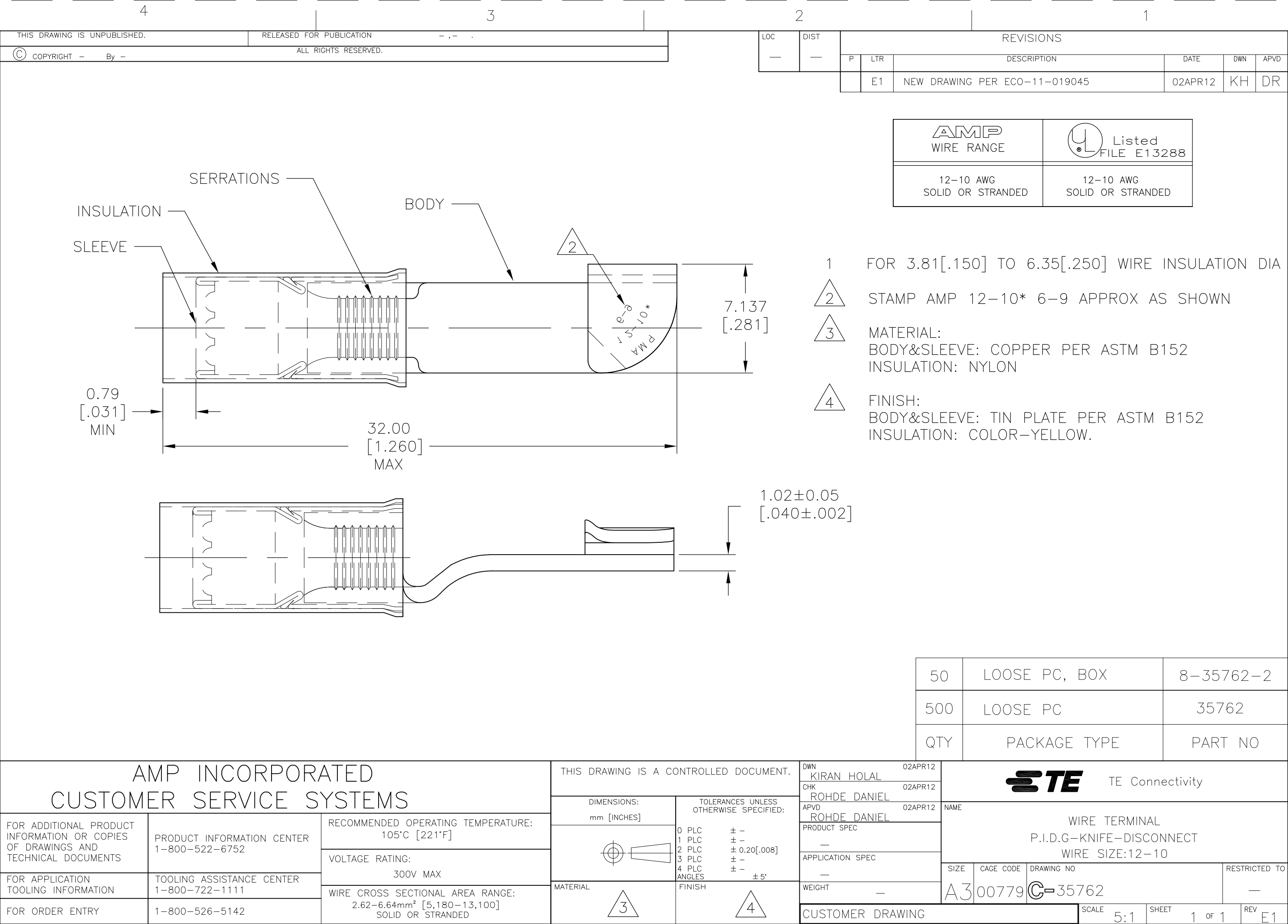
## Contact us

Tel: +86-755-8981 8866 Fax: +86-755-8427 6832

Email & Skype: [info@chipsmall.com](mailto:info@chipsmall.com) Web: [www.chipsmall.com](http://www.chipsmall.com)

Address: A1208, Overseas Decoration Building, #122 Zhenhua RD., Futian, Shenzhen, China





SERRATIONS

INSULATION

SLEEVE

BODY

2

7.137  
[.281]

0.79  
[.031]  
MIN

32.00  
[1.260]  
MAX

1.02±0.05  
[.040±.002]

1 FOR 3.81[.150] TO 6.35[.250] WIRE INSULATION DIA

2 STAMP AMP 12-10\* 6-9 APPROX AS SHOWN

3 MATERIAL:  
BODY&SLEEVE: COPPER PER ASTM B152  
INSULATION: NYLON

4 FINISH:  
BODY&SLEEVE: TIN PLATE PER ASTM B152  
INSULATION: COLOR-YELLOW.

50	LOOSE PC, BOX	8-35762-2
500	LOOSE PC	35762
QTY	PACKAGE TYPE	PART NO

AMP INCORPORATED  
CUSTOMER SERVICE SYSTEMS

THIS DRAWING IS A CONTROLLED DOCUMENT.

DWN  
KIRAN HOLAL  
02APR12

CHK  
ROHDE DANIEL  
02APR12

APVD  
ROHDE DANIEL  
02APR12

PRODUCT SPEC

APPLICATION SPEC

WEIGHT

CUSTOMER DRAWING

TE Connectivity

WIRE TERMINAL  
P.I.D.G-KNIFE-DISCONNECT  
WIRE SIZE:12-10

SIZE  
A3

CAGE CODE  
00779

DRAWING NO  
C-35762

RESTRICTED TO

SCALE  
5:1

SHEET  
1 OF 1

REV  
E1

FOR ADDITIONAL PRODUCT  
INFORMATION OR COPIES  
OF DRAWINGS AND  
TECHNICAL DOCUMENTS

PRODUCT INFORMATION CENTER  
1-800-522-6752

RECOMMENDED OPERATING TEMPERATURE:  
105°C [221°F]

VOLTAGE RATING:  
300V MAX

WIRE CROSS SECTIONAL AREA RANGE:  
2.62-6.64mm² [5,180-13,100]  
SOLID OR STRANDED

FOR APPLICATION  
TOOLING INFORMATION

TOOLING ASSISTANCE CENTER  
1-800-722-1111

FOR ORDER ENTRY

1-800-526-5142

DIMENSIONS:  
mm [INCHES]

0 PLC ± -

1 PLC ± -

2 PLC ± 0.20[.008]

3 PLC ± -

4 PLC ± -

ANGLES ± 5°

FINISH

3

4

MATERIAL

1470-19 (3/11)