



Chipsmall Limited consists of a professional team with an average of over 10 year of expertise in the distribution of electronic components. Based in Hongkong, we have already established firm and mutual-benefit business relationships with customers from,Europe,America and south Asia,supplying obsolete and hard-to-find components to meet their specific needs.

With the principle of “Quality Parts,Customers Priority,Honest Operation,and Considerate Service”,our business mainly focus on the distribution of electronic components. Line cards we deal with include Microchip,ALPS,ROHM,Xilinx,Pulse,ON,Everlight and Freescale. Main products comprise IC,Modules,Potentiometer,IC Socket,Relay,Connector.Our parts cover such applications as commercial,industrial, and automotives areas.

We are looking forward to setting up business relationship with you and hope to provide you with the best service and solution. Let us make a better world for our industry!



## Contact us

Tel: +86-755-8981 8866 Fax: +86-755-8427 6832

Email & Skype: info@chipsmall.com Web: www.chipsmall.com

Address: A1208, Overseas Decoration Building, #122 Zhenhua RD., Futian, Shenzhen, China



## 1MM & 2MM Hard Metric Plugboards

Plugbord

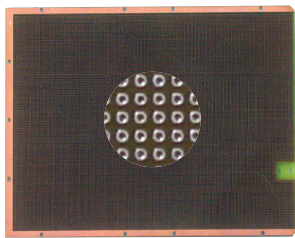
### Features:

- 3UX160MM Eurocard size (3.94" x 6.3") fit in Vector 3U DIN Subracks
- 2mm Connectors can be installed
- Copper plated thru holes, solder plated
- Grid Combination Boards

Several Versions of 2MM grid / combination grid boards are manufactured in DIN Eurocard 3U standard. These utility boards become cPCI or PXI usable by installation of a J1 'Type A' or J2 'Type AB' connector onto the board end. Vector K36C series tin plated pins may be used for wiring of .025" diameter holes and a variety of solder or wire-wrap pins and terminals are available for .042" diameter holes.

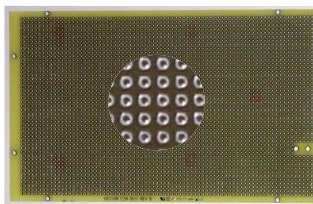
All boards are made of FR-4 Epoxy Glass, UL94 V-O, MIL-STD P13949, Type GF. All boards are .062" (1/16" or 0.6mm) thick.

All boards described here fit into our Vector-Pak CCA26 or CCK 26 series of 3U subracks.



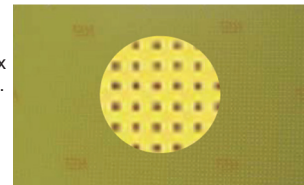
**8020 100mm x 160mm x .062" TH**

1mm grid in 3U Eurocard size. (3.94" x 6.3") .025" copper plated thru holes with annular rings, NO SOLDER PLATING. Accepts cPCI 2mm J1 (25 row) & J2 (22 row) connectors on edge  
Material: FR4  
Solder Terminals: K36



**8017 100mm x 160mm x .062" TH**

2mm grid Pattern Q in 3U Eurocard size (3.94" x 6.3"). .025" holes plated thru with annular ring. Accepts cPCI 2mm J1 (25 row) & J2 (22 row) connectors on edge  
Material: FR4  
Solder Terminals: K36



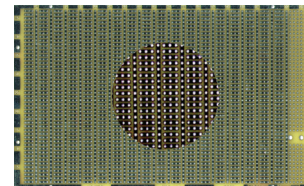
**47Q78WE 2mm Grid, holes only, no Copper**

Accepts cPCI 2mm J1 (25 row) & J2 (22 row) on edge.  
Material: FR-4



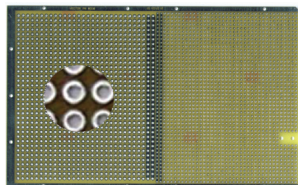
**8017J1 2mm grid, Pad-Per-Hole Connector**

Same as 8017 but with cPCI 2mm, J1 25 row connector installed



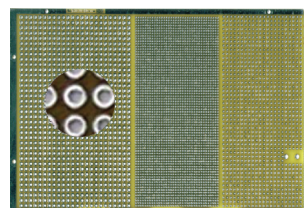
**8024 3.94"H x 6.3"L x .062" TH 100mm x 160mm**

2mm grid in 3U Eurocard size. 3-hole solder pad pattern with voltage and ground busses between pads and on board perimeter both sides. Row and column legends. .025" plated-thru holes with annular ring. Card accepts 25-row J1 Hard Metric connector (order 8024J1 for connector installed version).  
Material: FR-4  
WW Terminals: K36  
Card Cage: CCA26



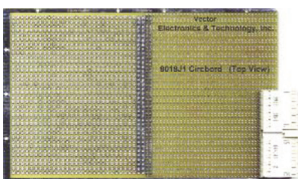
**8018 100mm x 160mm x .062" TH**

Combo: 0.100" & 2mm grid in 3U Eurocard size (3.94" x 6.3"), Pad-Per-Hole. Dual copper rows in middle for Vcc/Gnd use. .025" & .042" holes plated thru with annular ring. Accepts cPCI 2mm J1 (25 row) & J2 (22 row) connectors on edge  
Material: FR4  
Solder Terminals: .025" dia. K36  
.042" dia. T42-1, T46



**8028 3.94"H x 6.3"L x .062" TH 100mm x 160mm**

THREE-GRID COMBO. .100", .050" AND 2mm all in 3U Eurocard size. Pad-per-hole with voltage and ground busses on board perimeter. .042"(.100" grid) and .025"(.050" and 2mm) plated thru holes with annular ring. Card edge accepts 25-row J1 Hard Metric connector (order 8028J1 for connector installed version).  
Material: FR-4  
WW Terminals: (.025" holes) = K36  
WW Terminals: (.042" holes) = T44, T46, T49, T68  
Card Cage: CCA26



**8018J1 2mm/.100" Pad-Per-Hole Grid Combo wJ1**

Same as 8018 but with cPCI 2mm J1 25 row connector installed