



Chipsmall Limited consists of a professional team with an average of over 10 year of expertise in the distribution of electronic components. Based in Hongkong, we have already established firm and mutual-benefit business relationships with customers from,Europe,America and south Asia,supplying obsolete and hard-to-find components to meet their specific needs.

With the principle of "Quality Parts,Customers Priority,Honest Operation,and Considerate Service",our business mainly focus on the distribution of electronic components. Line cards we deal with include Microchip,ALPS,ROHM,Xilinx,Pulse,ON,Everlight and Freescale. Main products comprise IC,Modules,Potentiometer,IC Socket,Relay,Connector.Our parts cover such applications as commercial,industrial, and automotives areas.

We are looking forward to setting up business relationship with you and hope to provide you with the best service and solution. Let us make a better world for our industry!



Contact us

Tel: +86-755-8981 8866 Fax: +86-755-8427 6832

Email & Skype: info@chipsmall.com Web: www.chipsmall.com

Address: A1208, Overseas Decoration Building, #122 Zhenhua RD., Futian, Shenzhen, China



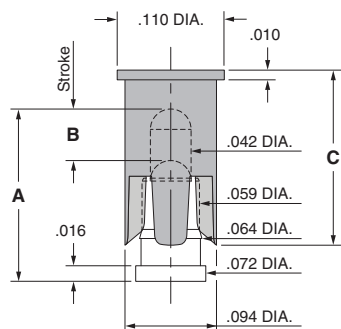
SPRING-LOADED CONNECTORS

SERIES 806 • REMOVABLE PICK & PLACE CAP, SPRING-LOADED PINS • SURFACE MOUNT

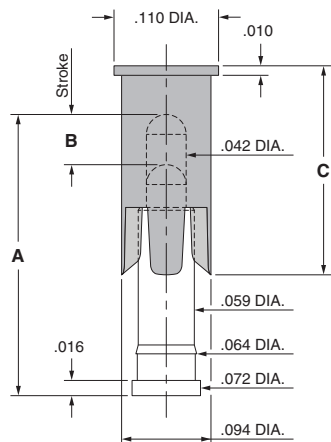


- Surface mount spring-loaded pins with removable pick & place cap are available in nine heights from .137" to .295" with a working travel of either .0195" or .0275"
- Spring pins used in this series are Mill-Max 0900-X and 0907-X (see page 23 for more details)
- The pick & place cap allows individual spring-loaded contacts to be packaged on tape and reel for automated assembly. The caps are easily removed after soldering leaving only the spring pin on the board.
- Pick & place cap material is high temperature thermoplastic suitable for most SMT soldering processes
- Supplied on 16 mm wide carrier tape, 13" reels; packaging per EIA-481. See below for ordering information

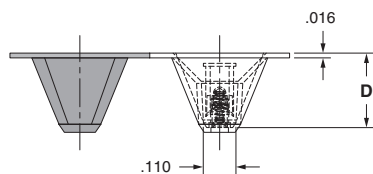
Series 806 (Contact Style 1,2,3,4,10,11)



Series 806 (Contact Style 12,13 & 14)



Series 806 (Tape Pocket Depth)



ORDERING INFORMATION

Series 806 (Tape & Reel Packaged)

806-22-001-30-0XX191

Specify contact style 1-4
Specify contact style 10-14

| Contact Style | Initial Height (A) | Working Travel | Full Stroke Range (B) | Sleeve Height (C) | Tape Depth (D) | Quantity per Reel |
|---------------|--------------------|----------------|-----------------------|-------------------|----------------|-------------------|
| 1 | .137 | .0195 | .030-.039 | .180 | .252 | 780 |
| 2 | .155 | .0195 | .030-.039 | .180 | .252 | 780 |
| 3 | .177 | .0275 | .050-.055 | .180 | .252 | 780 |
| 4 | .197 | .0275 | .050-.055 | .180 | .252 | 780 |
| 10 | .217 | .0275 | .050-.055 | .220 | .285 | 750 |
| 11 | .236 | .0275 | .050-.055 | .220 | .285 | 750 |
| 12 | .255 | .0275 | .050-.055 | .220 | .361 | 550 |
| 13 | .275 | .0275 | .050-.055 | .220 | .361 | 550 |
| 14 | .295 | .0275 | .050-.055 | .220 | .361 | 550 |

Technical Specifications

Materials:

Contact piston & base: Machined copper alloy plated 20 μ " gold over 100 μ " nickel
Spring (Contact style 1-14): Beryllium copper-plated 10 μ " gold
Insulator: High temperature thermoplastic, rated UL94 V-0

Mechanical:

Spring force @ initial height (A) (Contact style 1-14): 25 grams
Spring force @ mid stroke (B/2) (Contact style 1-14): 60 grams
Durability: Up to 1,000,000 cycles

Electrical:

Current rating: 2A (continuous), 3A (peak) per contact
Contact resistance: 20m Ω max.
Insulation resistance: 10,000M Ω min.

RoHS-2
2011/65/EU

