



Chipsmall Limited consists of a professional team with an average of over 10 year of expertise in the distribution of electronic components. Based in Hongkong, we have already established firm and mutual-benefit business relationships with customers from,Europe,America and south Asia,supplying obsolete and hard-to-find components to meet their specific needs.

With the principle of “Quality Parts,Customers Priority,Honest Operation,and Considerate Service”,our business mainly focus on the distribution of electronic components. Line cards we deal with include Microchip,ALPS,ROHM,Xilinx,Pulse,ON,Everlight and Freescale. Main products comprise IC,Modules,Potentiometer,IC Socket,Relay,Connector.Our parts cover such applications as commercial,industrial, and automotives areas.

We are looking forward to setting up business relationship with you and hope to provide you with the best service and solution. Let us make a better world for our industry!



## Contact us

Tel: +86-755-8981 8866 Fax: +86-755-8427 6832

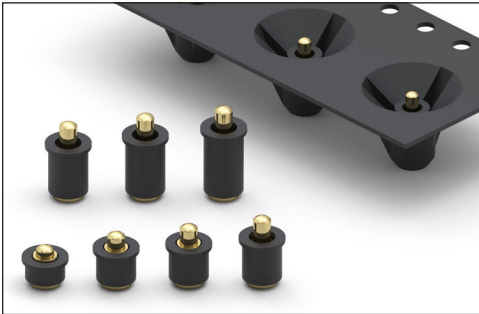
Email & Skype: info@chipsmall.com Web: www.chipsmall.com

Address: A1208, Overseas Decoration Building, #122 Zhenhua RD., Futian, Shenzhen, China



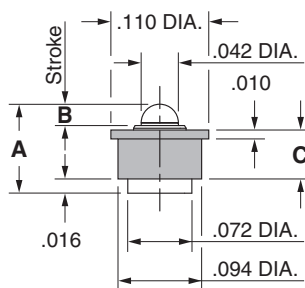
# SPRING-LOADED CONNECTORS

## SERIES 807 • DISCRETE INSULATED SPRING-LOADED PINS • SURFACE MOUNT

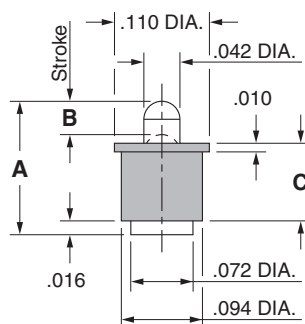


- Discrete insulated spring-loaded pins; available in seven heights from .100" to .236", with working travel from .012" to .0275"
- Precision-machined piston / base and gold-plated components assure a 1,000,000 cycle life durability
- Low resistance contacts are rated at 2 amps continuous, 3 amps peak
- High temperature thermoplastic insulators are suitable for SMT soldering processes
- 807 series, contact styles 0 through 6, are available in bulk or on 16mm wide carrier tape for automated pick and place assembly. Tape and Reel packaging per EIA-481. See below for ordering information

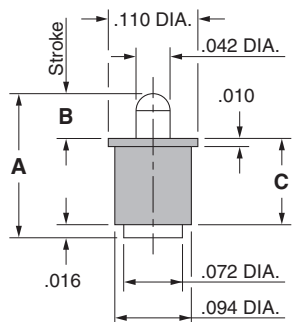
### Series 807 (Contact Style 0)



### Series 807 (Contact Style 1 & 2)



### Series 807 (Contact Style 3-6)



## ORDERING INFORMATION

### Series 807 (Bulk Packaged)

807-22-001-30-00X101

Specify contact style 0-6

### Series 807 (Tape & Reel Packaged)

807-22-001-30-00X191

Specify contact style 0-6

Contact Style	Initial Height (A)	Working Travel	Full Stroke Range (B)	Sleeve Height (C)	Quantity per Reel
0	.100	.012	.020-.024	.055	2,620
1	.137	.0195	.030-.039	.082	1,750
2	.155	.0195	.035-.039	.090	1,750
3	.177	.0275	.045-.055	.106	1,055
4	.197	.0275	.045-.055	.126	780
5	.217	.0275	.045-.055	.146	780
6	.236	.0275	.045-.055	.165	780

### Technical Specifications

#### Materials:

Contact piston & base: Machined copper alloy plated 20μ" gold over 100μ" nickel  
 Spring (Contact style 0): Stainless Steel-plated 10μ" gold  
 Spring (Contact style 1-6): Beryllium copper-plated 10μ" gold  
 Insulator: High temperature thermoplastic, rated UL94 V-0

#### Mechanical:

Spring force @ initial height (A) (Contact style 0-6): 25 grams  
 Spring force @ mid stroke (B/2) (Contact style 0): 70 grams  
 Spring force @ mid stroke (B/2) (Contact style 1-6): 60 grams  
 Durability: 1,000,000 cycles

#### Electrical:

Current rating: 2A (continuous), 3A (peak) per contact  
 Contact resistance: 20mΩ max.  
 Insulation resistance: 10,000MΩ min.  
 Dielectric strength: 700Vrms min.

RoHS-2  
2011/65/EU

