



Chipsmall Limited consists of a professional team with an average of over 10 year of expertise in the distribution of electronic components. Based in Hongkong, we have already established firm and mutual-benefit business relationships with customers from,Europe,America and south Asia,supplying obsolete and hard-to-find components to meet their specific needs.

With the principle of “Quality Parts,Customers Priority,Honest Operation,and Considerate Service”,our business mainly focus on the distribution of electronic components. Line cards we deal with include Microchip,ALPS,ROHM,Xilinx,Pulse,ON,Everlight and Freescale. Main products comprise IC,Modules,Potentiometer,IC Socket,Relay,Connector.Our parts cover such applications as commercial,industrial, and automotives areas.

We are looking forward to setting up business relationship with you and hope to provide you with the best service and solution. Let us make a better world for our industry!



Contact us

Tel: +86-755-8981 8866 Fax: +86-755-8427 6832

Email & Skype: info@chipsmall.com Web: www.chipsmall.com

Address: A1208, Overseas Decoration Building, #122 Zhenhua RD., Futian, Shenzhen, China



- Vises, Work Holding Tools
- PanaPress. Mini Arbor Press
- Mobile Electronics Mounts
- InDash Custom Dash Mounts
- iPod-iPhone Holders-Mounts
- Smartphone Accessories
- Smartphone Screen Protectors
- CCTV, Security Camera Mounts
- Audio/Video Mounts

Model: 810-QR Quick Release Window Mount

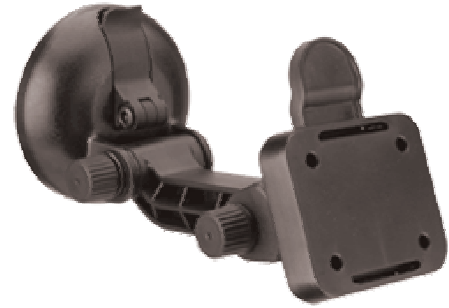
We've included our "quick release" AMPS-compatible interface for "easy on, easy off" accessibility.

Quick Release Interface:

- AMPS-compatible, a quick release interface for a wide variety of electronics including satellite radios and GPS units
- Quickly remove electronics for security or move them from vehicle-to-vehicle
- Top firmly attaches to the base with a solid "click"
- Made of black, high-impact polycarbonate plastic
- Simply lift the latch to remove the electronics

Window Mount Features:

- Powerful suction pad attaches to any smooth, flat, non-porous surface including windshields and side windows
- Easily move electronics from vehicle-to-vehicle or remove for security
- Electronics mounting plate tilts up and down (locks with knob) and features 20° Tilt in all directions
- Ratchet arm has 140° motion; knob locks arm into place
- Suction pad is 2.8" (71mm) in diameter
- Recommended for electronics weighing less than 2.0 lbs. (0.9kg)
- Quick release suction cup tab



Quantity



Click on any of the above images to find out more about the products pictured.