



Chipsmall Limited consists of a professional team with an average of over 10 year of expertise in the distribution of electronic components. Based in Hongkong, we have already established firm and mutual-benefit business relationships with customers from,Europe,America and south Asia,supplying obsolete and hard-to-find components to meet their specific needs.

With the principle of “Quality Parts,Customers Priority,Honest Operation,and Considerate Service”,our business mainly focus on the distribution of electronic components. Line cards we deal with include Microchip,ALPS,ROHM,Xilinx,Pulse,ON,Everlight and Freescale. Main products comprise IC,Modules,Potentiometer,IC Socket,Relay,Connector.Our parts cover such applications as commercial,industrial, and automotives areas.

We are looking forward to setting up business relationship with you and hope to provide you with the best service and solution. Let us make a better world for our industry!



## Contact us

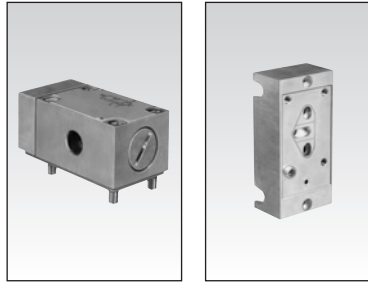
Tel: +86-755-8981 8866 Fax: +86-755-8427 6832

Email & Skype: info@chipsmall.com Web: www.chipsmall.com

Address: A1208, Overseas Decoration Building, #122 Zhenhua RD., Futian, Shenzhen, China



# 3/2 control valve and sub-base



## Part numbers

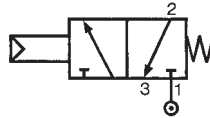
3/2 control valve with pneumatic pilot  
 Sub-base - push-in connection for semi-rigid tubing 5/16" O.D.  
 (Ø 8 mm) (NFE 49100)

81 213 101

81 544 101

1

## Symbol

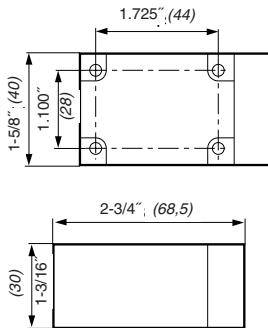


## Characteristics

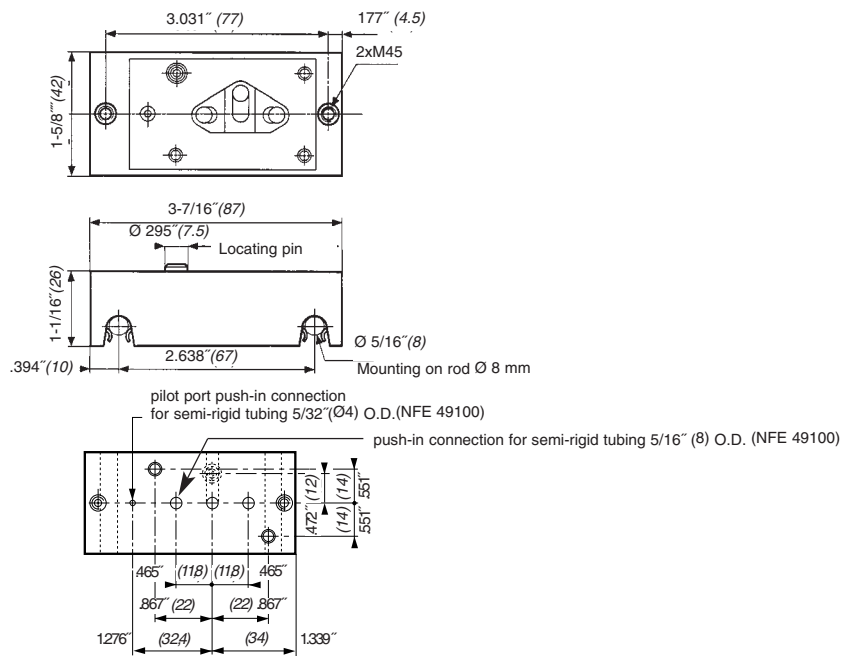
Pilot pressure	psi (bar)	30>120 (2 > 8)	—
Operating pressure	psi (bar)	30>150 (2 > 12)	—
Orifice diameter	inches (mm)	1/4" (6)	—
Flow at 90 psi (6 bars) upstream	cfm (NL/min)	26 (750)	—
Life at 60 psi (4 bars)	cycles	10 million	—
Weight	grams	350	220

## Dimensions

81 213 101



81 544 101



use (metric) dimensions for critical data

Other information	To order, specify :
	<p>Standard products</p> <p><b>1</b> Part number                      Example : 3/2 control valve and accessories - 81 213 101</p>

Products and specifications subject to change without notice.  
 Consult factory for application assistance.

5