



Chipsmall Limited consists of a professional team with an average of over 10 year of expertise in the distribution of electronic components. Based in Hongkong, we have already established firm and mutual-benefit business relationships with customers from,Europe,America and south Asia,supplying obsolete and hard-to-find components to meet their specific needs.

With the principle of "Quality Parts,Customers Priority,Honest Operation,and Considerate Service",our business mainly focus on the distribution of electronic components. Line cards we deal with include Microchip,ALPS,ROHM,Xilinx,Pulse,ON,Everlight and Freescale. Main products comprise IC,Modules,Potentiometer,IC Socket,Relay,Connector.Our parts cover such applications as commercial,industrial, and automotives areas.

We are looking forward to setting up business relationship with you and hope to provide you with the best service and solution. Let us make a better world for our industry!



## Contact us

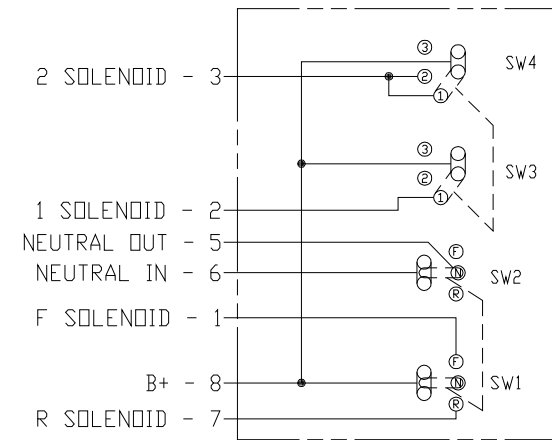
Tel: +86-755-8981 8866 Fax: +86-755-8427 6832

Email & Skype: [info@chipsmall.com](mailto:info@chipsmall.com) Web: [www.chipsmall.com](http://www.chipsmall.com)

Address: A1208, Overseas Decoration Building, #122 Zhenhua RD., Futian, Shenzhen, China



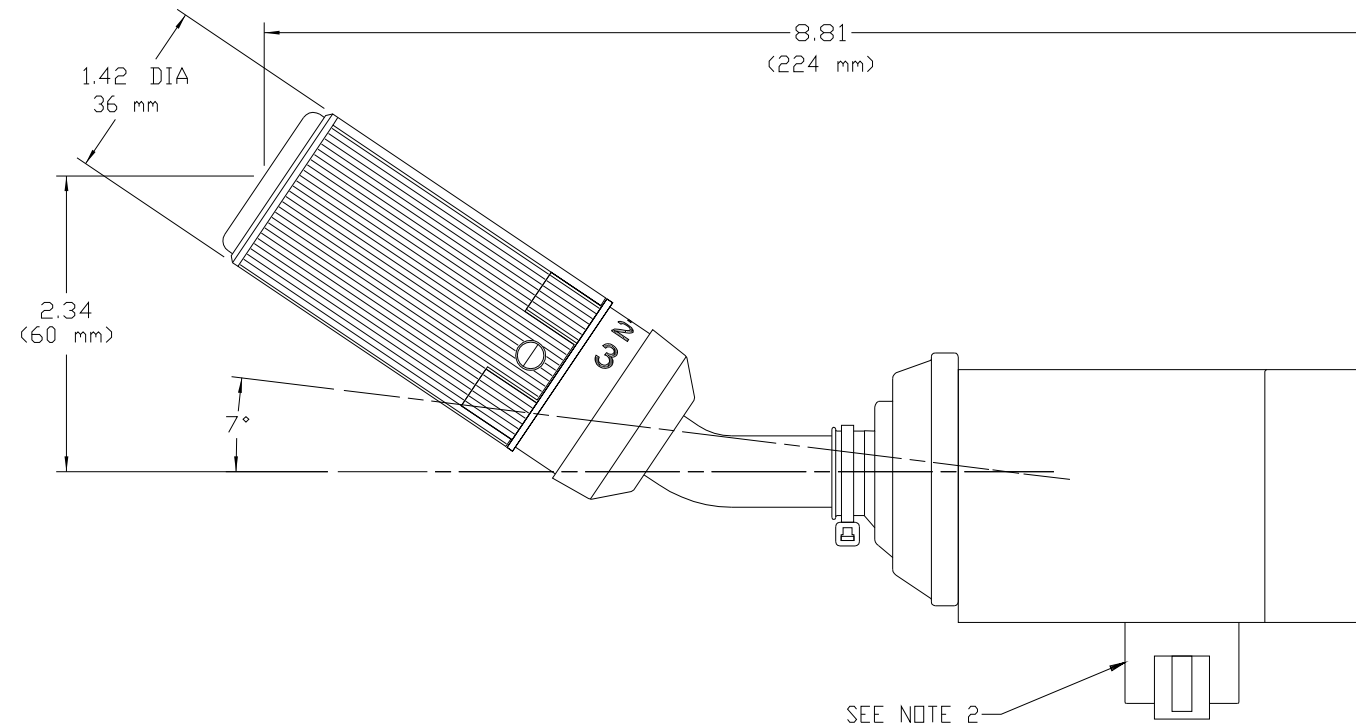
PART NUMBER		81485		REV.	
SHEET 2		OF 2	M	D	
DESCRIPTION OF CHANGE					
APPD.	REV.	DATE	PCN NO.	BY	
	D	20May03	33582	RF	
RELEASED FOR PRODUCTION					



ELECTRICAL SCHEMATIC  
SHOWN IN NEUTRAL

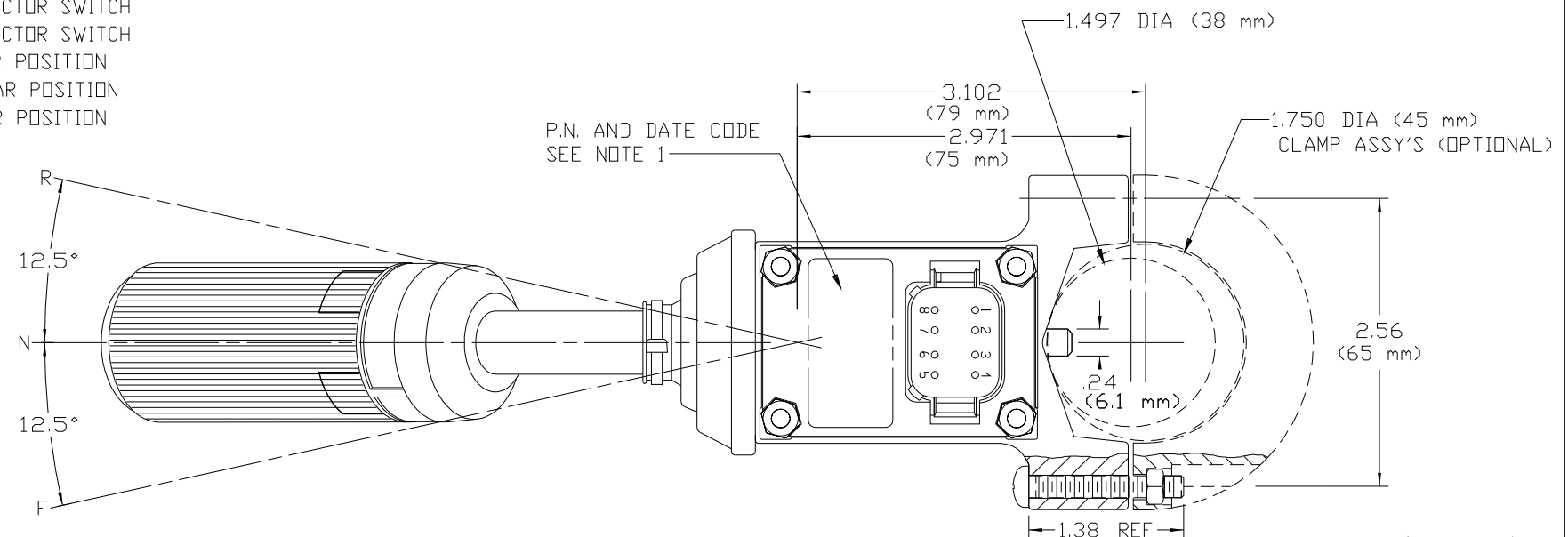
### LEGEND

F	FORWARD POSITION	SW3	SPEED SELECTOR SWITCH
N	NEUTRAL POSITION	SW4	SPEED SELECTOR SWITCH
R	REVERSE POSITION	1	FIRST GEAR POSITION
SW1	DIRECTION SELECTOR SWITCH	2	SECOND GEAR POSITION
SW2	DIRECTION SELECTOR SWITCH	3	THIRD GEAR POSITION



CUSTOMER: \_\_\_\_\_  
APPROVED BY: \_\_\_\_\_  
DATE: \_\_\_\_\_  
CUSTOMER  
PART NO.: \_\_\_\_\_

PART NUMBER 81485  
SHEET 2 OF 2



CUSTOMER PRINT

NOTES:

1. CUSTOMER OR HONEYWELL HOBBS P/N, CHANGE NO. AND DATE CODE TO BE STAMPED IN AREA SHOWN.
2. A. MATING CONNECTOR-DEUTSCH DT06-08S  
B. CONNECTOR WEDGE-DEUTSCH W8S  
C. CONNECTOR TERMINAL-DEUTSCH 1062-16-0122  
OPTIONAL TERMINAL-DEUTSCH 0462-201-16141  
D. SEALING PLUG-DEUTSCH 114017

<b>Honeywell</b> <i>Hobbs</i> SPRINGFIELD, IL U.S.A.				NAME	
DRAWN RF		CHECKED		SHIFTER ASSY 3X3 F-N-R SHIFTER	
DATE 25Jan96		SCALE 1:1		CONFIDENTIAL AND PROPRIETARY INFORMATION. DIMENSIONS ARE FOR REFERENCE ONLY UNLESS OTHERWISE SPECIFIED.	
DO NOT SCALE		DKT. NO.		MATERIAL	
				FINISH	
				NEXT ASSY.	
				PART NUMBER	
				81485	
				SHEET 2 OF 2	