



Chipsmall Limited consists of a professional team with an average of over 10 year of expertise in the distribution of electronic components. Based in Hongkong, we have already established firm and mutual-benefit business relationships with customers from,Europe,America and south Asia,supplying obsolete and hard-to-find components to meet their specific needs.

With the principle of “Quality Parts,Customers Priority,Honest Operation,and Considerate Service”,our business mainly focus on the distribution of electronic components. Line cards we deal with include Microchip,ALPS,ROHM,Xilinx,Pulse,ON,Everlight and Freescale. Main products comprise IC,Modules,Potentiometer,IC Socket,Relay,Connector.Our parts cover such applications as commercial,industrial, and automotives areas.

We are looking forward to setting up business relationship with you and hope to provide you with the best service and solution. Let us make a better world for our industry!



Contact us

Tel: +86-755-8981 8866 Fax: +86-755-8427 6832

Email & Skype: info@chipsmall.com Web: www.chipsmall.com

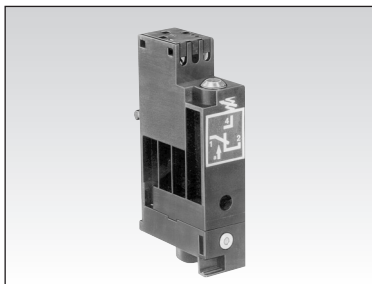
Address: A1208, Overseas Decoration Building, #122 Zhenhua RD., Futian, Shenzhen, China





Intrinsically safe pressure switches EEx ia II C T6

LCIE approval
no. 93 C 6015X



- Conform to the Low Voltage Directive
- Can be used without enclosure according to IEC 664-1 pollution group III

Part numbers

81 513 530

DIN rail 35 mm
EN 50022

Fixing

Function control
Version manual override

pressure
with

Symbol



Characteristics

Permitted fluids	air, inert gases and liquids		●
Adjustable switching pressure (* set at 0.3)	bar	2 to 8	
Hysteresis	at 1 bar	0.5	
	at 2 bars	0.6	
	at 4 bars	0.8	
	at 6 bars	1	
Pressure indicator			●
Temperature	operating ° C	- 10 + 50	
	of fluid ° C	- 10 + 30	
Mechanical life	operations	10 ⁶	
Maximum voltage	V	60 Vdc	
Construction	POM, brass, AU4G		●
Weight	g	48	
Degree of protection	IEC 529	IP 20	

Pneumatic connections

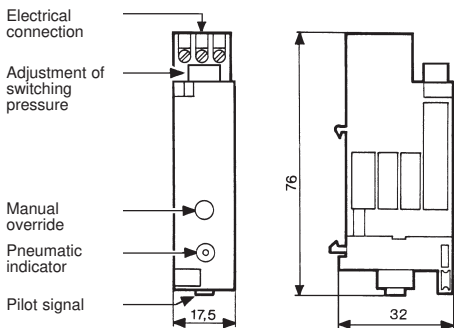
	Push-in connection for semi-rigid tubing Ø 4 mm (NFE 49100)		●
Connection	Tapped holes 1/8 BSP		—

Electrical connections

	Integral electrical connections		●
Screw terminals	number	3 (1-2-4)	
Wire cross-section	mm ²	0.75	
Terminal capacity	mm ²	3	

Dimensions

81 513 530



Other information

On request :
- Low pressure version from 0.2 to 1.2 bars
- Vacuum version adjustable from -0.3 to -1 bar

To order, specify :

Standard products



Reference

Example : Intrinsically safe pressure switches -
81 513 530

Products and specifications subject to change without notice.
Consult factory for application assistance.

204 Airline Drive, Suite 300, Coppell, Texas 75019 / Tel: (888) 778-2733 / FAX: (888) 329-9773 / www.crouzet-usa.com