



Chipsmall Limited consists of a professional team with an average of over 10 year of expertise in the distribution of electronic components. Based in Hongkong, we have already established firm and mutual-benefit business relationships with customers from,Europe,America and south Asia,supplying obsolete and hard-to-find components to meet their specific needs.

With the principle of "Quality Parts,Customers Priority,Honest Operation,and Considerate Service",our business mainly focus on the distribution of electronic components. Line cards we deal with include Microchip,ALPS,ROHM,Xilinx,Pulse,ON,Everlight and Freescale. Main products comprise IC,Modules,Potentiometer,IC Socket,Relay,Connector.Our parts cover such applications as commercial,industrial, and automotives areas.

We are looking forward to setting up business relationship with you and hope to provide you with the best service and solution. Let us make a better world for our industry!



Contact us

Tel: +86-755-8981 8866 Fax: +86-755-8427 6832

Email & Skype: info@chipsmall.com Web: www.chipsmall.com

Address: A1208, Overseas Decoration Building, #122 Zhenhua RD., Futian, Shenzhen, China



Sequencer sub-bases



1

Part numbers

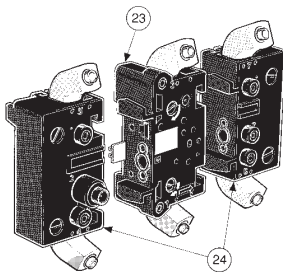
	81 551 101	81 552 102	81 552 601
Front connecting (DIN-omega)	Sub-base (DIN omega)	End bases - 1 pair entry & exit modules	Diversion base

Characteristics

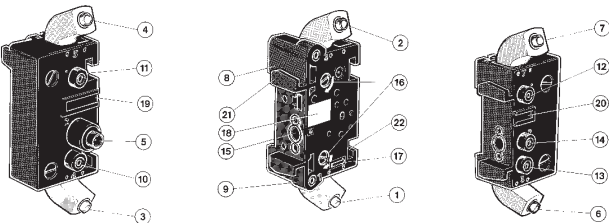
Sub-bases	Rotatable connectors	•	•	•
	Pressure indicators	•	•	•
Weight	grams	55	135	60

Sequencer connections

Front connecting

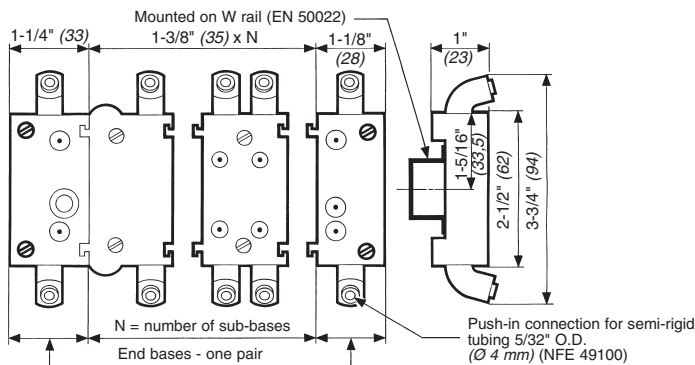


- 1 - Input port (green - port 1) Ø 5/32" (4 mm)
- 2 - Output port (red - port 3) Ø 5/32" (4 mm)
- 3 - Input port, cycle start (green - port 4) Ø 5/32" (4 mm)
- 4 - Output port, in-cycle signal (red - port 5) Ø 5/32" (4 mm)
- 5 - Supply port (yellow - port 2) Ø 1/4" (6.35 mm)
- 6 - Output port, end of cycle (red - port 6) Ø 5/32" (4 mm)
- 7 - Input port, reset to zero (green - port 7) Ø 5/32" (4 mm)
- 8 - Output indicator (red)
- 9 - Input indicator (green)
- 10 - Cycle start indicator at port 4 (green)
- 11 - In-cycle indicator at port 5 (red)
- 12 - Input indicator at port 7 (green)
- 13 - End of cycle indicator at port 6 (red)
- 14 - Supply indicator at port 2 (yellow)
- 15 - Interconnecting ports
- 16 - Mounting screws
- 17 - Engraved arrow to indicate direction of sequence
- 18 - Marking tag
- 19 - Marking tag position
- 20 - Marking tag position
- 21 - Mounting tongue
- 22 - Mounting groove
- 23 - Sub-base
- 24 - End bases

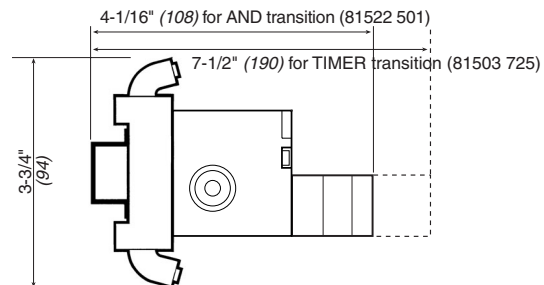


Dimensions

Front connecting



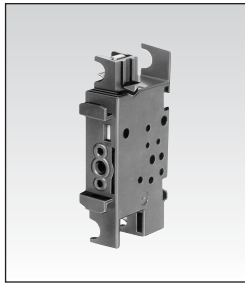
Finished product on DR rail



Use (metric) dimensions for critical data.

Products and specifications subject to change without notice.

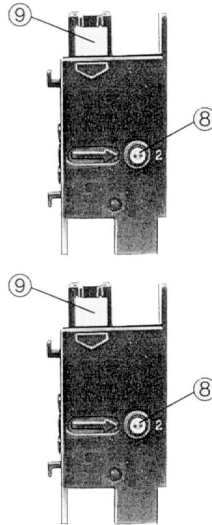
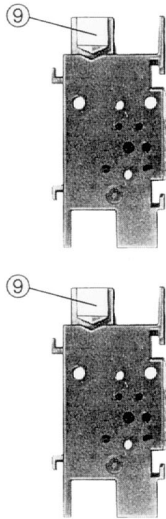
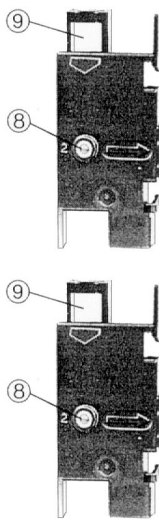
Order/Technical Support – Tel: (800) 677-5311 / FAX: (800) 677-3865 / www.crouzet-usa.com



81 551 001	81 552 001
—	—
Sub-base (with clips)	End bases - one pair entry & exit modules
—	—
40	120

1

Rear connecting

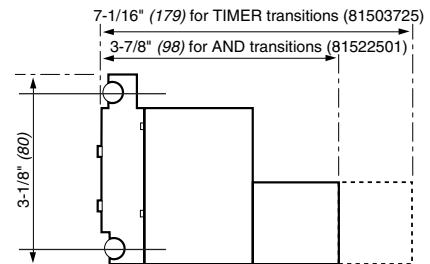
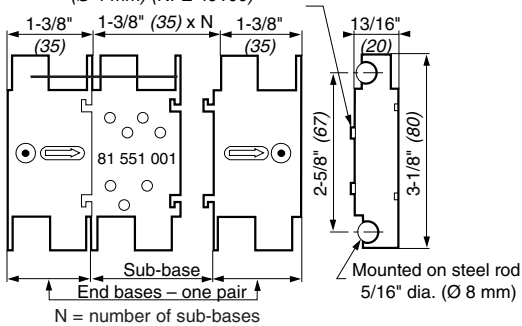


- 1 - Input port (marked port 1)
- 2 - Supply port (Port 2)
- 3 - Output port (Port 3)
- 4 - Cycle start signal port (Port 4)
- 5 - In-cycle signal port (Port 5)
- 6 - End of cycle signal port (Port 6)
- 7 - Reset to zero signal port (Port 7)
- 8 - Indicator at supply port
- 9 - Marking area

Rear connecting

Finished product on 5/16" rods.

Push-in connection for semi-rigid tubing 5/32" O.D. (Ø 4 mm) (NFE 49100)



Use (metric) dimensions for critical data.

To order, specify :

Standard products

1

Part number

Example : Sequencer sub-bases - 81 551 101

Products and specifications subject to change without notice.

Order/Technical Support – Tel: (800) 677-5311 / FAX: (800) 677-3865 / www.crouzet-usa.com