



Chipsmall Limited consists of a professional team with an average of over 10 year of expertise in the distribution of electronic components. Based in Hongkong, we have already established firm and mutual-benefit business relationships with customers from,Europe,America and south Asia,supplying obsolete and hard-to-find components to meet their specific needs.

With the principle of “Quality Parts,Customers Priority,Honest Operation,and Considerate Service”,our business mainly focus on the distribution of electronic components. Line cards we deal with include Microchip,ALPS,ROHM,Xilinx,Pulse,ON,Everlight and Freescale. Main products comprise IC,Modules,Potentiometer,IC Socket,Relay,Connector.Our parts cover such applications as commercial,industrial, and automotives areas.

We are looking forward to setting up business relationship with you and hope to provide you with the best service and solution. Let us make a better world for our industry!



Contact us

Tel: +86-755-8981 8866 Fax: +86-755-8427 6832

Email & Skype: info@chipsmall.com Web: www.chipsmall.com

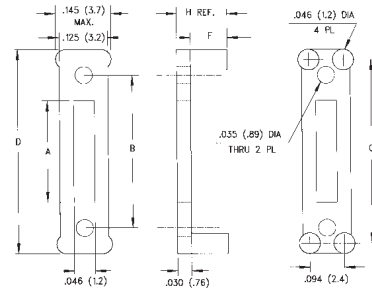
Address: A1208, Overseas Decoration Building, #122 Zhenhua RD., Futian, Shenzhen, China





PART NO.	A	B	C	D	F	H	PRICE CODE
330-200					.000	.030 (.76)	
331-200	.076 (1.9)	.200 (5.1)	.235 (6.0)	.297 (7.5)	.030 (.76)	.060 (1.5)	A
332-200					.060 (1.5)	.090 (2.3)	
335-300					.000	.030 (.76)	
336-300	.176 (4.5)	.300 (7.6)	.335 (8.5)	.397 (10.1)	.030 (.76)	.060 (1.5)	A
337-300					.060 (1.5)	.090 (2.3)	
340-400					.000	.030 (.76)	
341-400	.276 (7.0)	.400 (10.2)	.435 (11.0)	.497 (12.6)	.030 (.76)	.060 (1.5)	B
342-400					.060 (1.5)	.090 (2.3)	
345-500					.000	.030 (.76)	
346-500	.376 (9.6)	.500 (12.7)	.535 (13.6)	.597 (15.2)	.030 (.76)	.060 (1.5)	B
347-500					.060 (1.5)	.090 (2.3)	
350-600					.000	.030 (.76)	
351-600	.476 (12.1)	.600 (15.2)	.635 (16.1)	.697 (17.7)	.030 (.76)	.060 (1.5)	G
352-600					.060 (1.5)	.090 (2.3)	
355-700					.000	.030 (.76)	
356-700	.576 (14.6)	.700 (17.8)	.735 (18.7)	.797 (20.2)	.030 (.76)	.060 (1.5)	G
357-700					.060 (1.5)	.090 (2.3)	

330 Series



Material Specifications:

Natural Nylon, per ASTM D 4066 PA111
U.L. Rated 94V-2

(Bivar reserves the right to supply upgraded 94V-0 materials.)



Oxygen Rating Index: Over 28% Standard Drawing Tolerances,

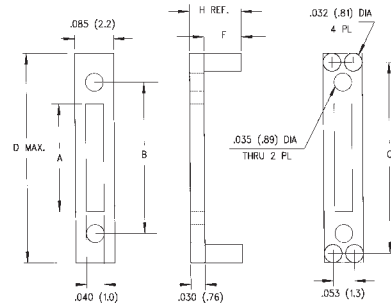
unless otherwise indicated:

Fractions: ± 1/64 (.40)

.X ± 1/64 (.40) .XX ± .010 (.254) .XXX ± .005 (.127)

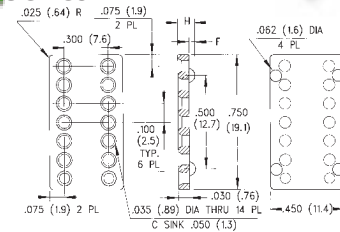
PART NO.	A	B	C	D	F	H	PRICE CODE
360-200					.000	.030 (.76)	
361-200	.076 (1.9)	.200 (5.1)	.235 (6.0)	.297 (7.5)	.030 (.76)	.060 (1.5)	A
362-200					.060 (1.5)	.090 (2.3)	
365-300					.000	.030 (.76)	
366-300	.176 (4.5)	.300 (7.6)	.335 (8.5)	.397 (10.1)	.030 (.76)	.060 (1.5)	A
367-300					.060 (1.5)	.090 (2.3)	
370-400					.000	.030 (.76)	
371-400	.276 (7.0)	.400 (10.2)	.435 (11.0)	.497 (12.6)	.030 (.76)	.060 (1.5)	B
372-400					.060 (1.5)	.090 (2.3)	
375-500					.000	.030 (.76)	
376-500	.376 (9.6)	.500 (12.7)	.535 (13.6)	.597 (15.2)	.030 (.76)	.060 (1.5)	B
377-500					.060 (1.5)	.090 (2.3)	
380-600					.000	.030 (.76)	
381-600	.476 (12.1)	.600 (15.2)	.635 (16.1)	.697 (17.7)	.030 (.76)	.060 (1.5)	G
382-600					.060 (1.5)	.090 (2.3)	
385-700					.000	.030 (.76)	
386-700	.576 (14.6)	.700 (17.8)	.735 (18.7)	.797 (20.2)	.030 (.76)	.060 (1.5)	G
387-700					.060 (1.5)	.090 (2.3)	

360 Series



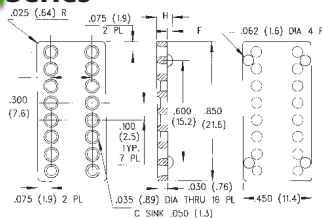
PART NO.	F	H	A55485/06 M38527/06	PRICE CODE	COLOR
814-030	.000	.030 (.76)	-004N	C	Natural
814-045	.015 (.38)	.045 (1.1)	-	C	Black
814-060	.030 (.76)	.060 (1.5)	-005N	C	Natural
814-080	.050 (1.3)	.080 (2.0)	-006N	C	Natural
814-100	.070 (1.8)	.100 (2.5)	-	C	Black

814 Series



PART NO.	F	H	A55485/06 M38527/06	PRICE CODE	COLOR
816-030	.000	.030 (.76)	-	C	Black
816-045	.015 (.38)	.045 (1.1)	-	C	Black
816-060	.030 (.76)	.060 (1.5)	-007N	C	Natural
816-080	.050 (1.3)	.080 (2.0)	-	C	Black
816-100	.070 (1.8)	.100 (2.5)	-	C	Black

816 Series



PART NO.	F	H	A55485/06 M38527/06	PRICE CODE	COLOR
818-030	.000	.030 (.76)	-	C	Black
818-045	.015 (.38)	.045 (1.1)	-	C	Black
818-060	.030 (.76)	.060 (1.5)	-	C	Black
818-080	.050 (1.3)	.080 (2.0)	-	C	Black
818-100	.070 (1.8)	.100 (2.5)	-	C	Black

818 Series

