



Chipsmall Limited consists of a professional team with an average of over 10 year of expertise in the distribution of electronic components. Based in Hongkong, we have already established firm and mutual-benefit business relationships with customers from,Europe,America and south Asia,supplying obsolete and hard-to-find components to meet their specific needs.

With the principle of "Quality Parts,Customers Priority,Honest Operation,and Considerate Service",our business mainly focus on the distribution of electronic components. Line cards we deal with include Microchip,ALPS,ROHM,Xilinx,Pulse,ON,Everlight and Freescale. Main products comprise IC,Modules,Potentiometer,IC Socket,Relay,Connector.Our parts cover such applications as commercial,industrial, and automotives areas.

We are looking forward to setting up business relationship with you and hope to provide you with the best service and solution. Let us make a better world for our industry!



Contact us

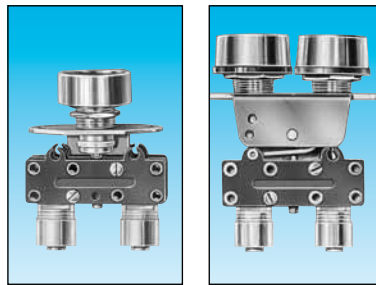
Tel: +86-755-8981 8866 Fax: +86-755-8427 6832

Email & Skype: info@chipsmall.com Web: www.chipsmall.com

Address: A1208, Overseas Decoration Building, #122 Zhenhua RD., Futian, Shenzhen, China



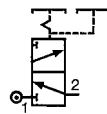
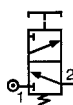
Push buttons diameter 12 and actuators



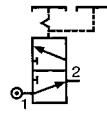
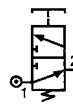
Features	Actuator color	Valve color	Push button round	Push button double round
Version	NC	black	81 735 511	—
		red	81 735 512	—
	NO	black/red	—	81 733 511
		black	grey	81 735 011
	red	grey	—	—
	black/red	grey	—	—

Symbol

NC



NO

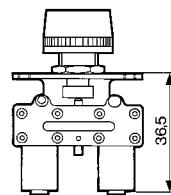


Characteristics

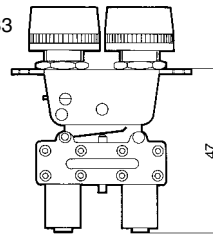
Operating pressure	bar	2 → 8	2 → 8
Orifice diameter	mm	2.7	2.7
Flow at 6 bars	l/min.	200	200
Valves	NC : black NO : grey	●	●
Operating forces (depending on actuator)	N	8 → 18	8 → 18
Effective travel	mm	1	1
Fluid: dry or lubricated air		●	●
Push-in connectors for semi-rigid tubing (NFE 49100)	mm	Ø 4	Ø 4
Operating temperature	°C	-5 +50	-5 +50
Mechanical life	operations	1.5 x 10 ⁶	1.5 x 10 ⁶
Weight	g	35	40

Dimensions

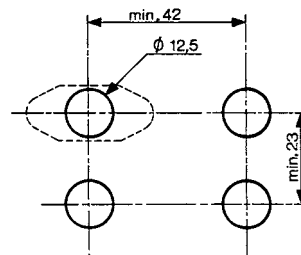
81 735



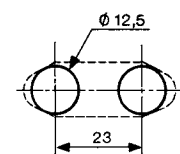
81 733

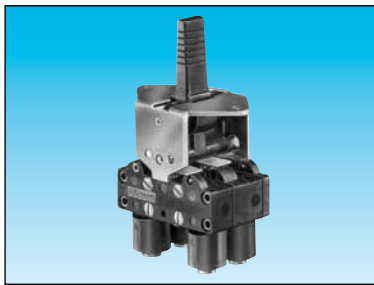


Threaded barrel



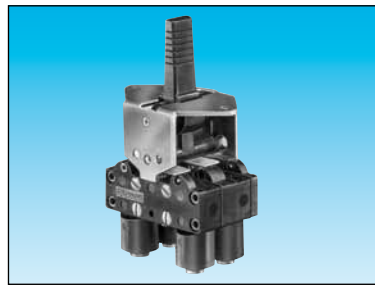
2 threaded barrels





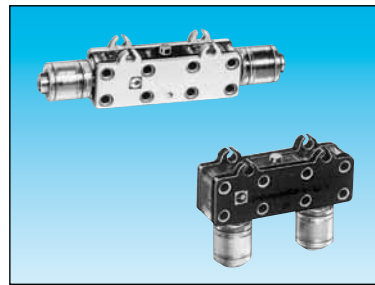
3-position lever
manual return

81 716 511
81 716 512



3-position lever
spring return

81 715 511
81 715 512

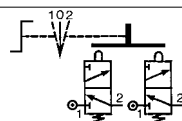
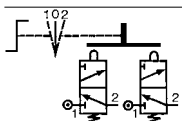


Horizontal outputs

81 280 510
81 280 010

Vertical outputs

81 281 510
81 281 010



2 → 8
2.7
200

2 → 8
2.7
200

2 → 8
2.7
200

2 → 8
2.7
200

8 → 18
1

8 → 18
1

8 → 18
1

8 → 18
1

Ø 4

Ø 4

Ø 4

Ø 4

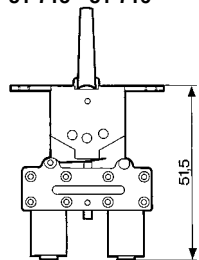
-5 +50
1.5 x 10⁶
65

-5 +50
1.5 x 10⁶
65

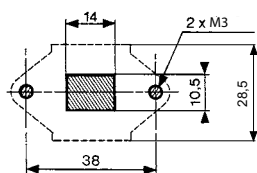
-5 +50
1.5 x 10⁶
14

-5 +50
1.5 x 10⁶
14

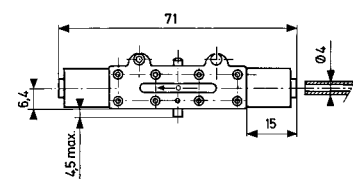
81 715 - 81 716



Square lever



81 280 010 - 81 280 510



81 281 010 - 81 281 510

