



Chipsmall Limited consists of a professional team with an average of over 10 year of expertise in the distribution of electronic components. Based in Hongkong, we have already established firm and mutual-benefit business relationships with customers from,Europe,America and south Asia,supplying obsolete and hard-to-find components to meet their specific needs.

With the principle of "Quality Parts,Customers Priority,Honest Operation,and Considerate Service",our business mainly focus on the distribution of electronic components. Line cards we deal with include Microchip,ALPS,ROHM,Xilinx,Pulse,ON,Everlight and Freescale. Main products comprise IC,Modules,Potentiometer,IC Socket,Relay,Connector.Our parts cover such applications as commercial,industrial, and automotives areas.

We are looking forward to setting up business relationship with you and hope to provide you with the best service and solution. Let us make a better world for our industry!



## Contact us

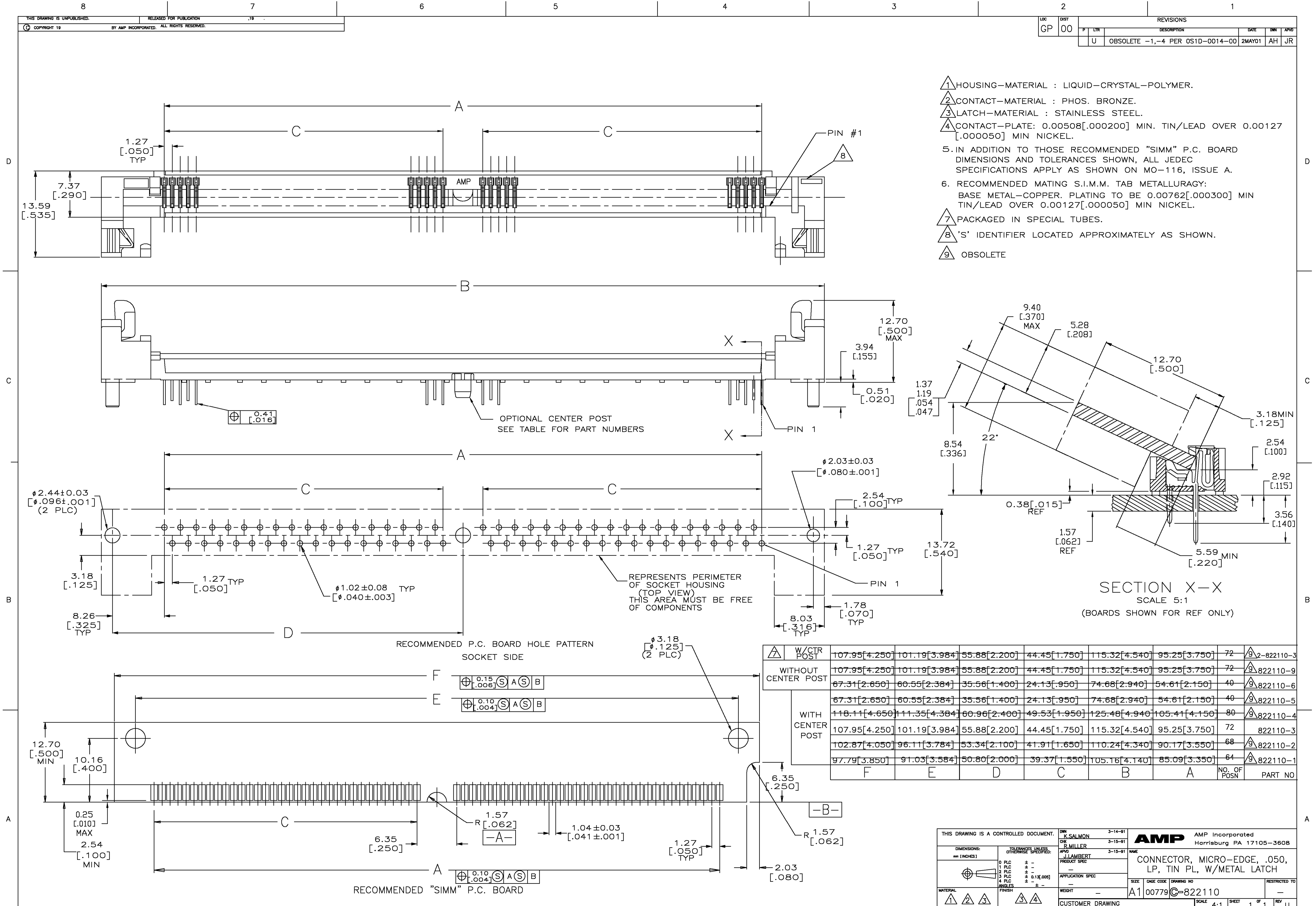
Tel: +86-755-8981 8866 Fax: +86-755-8427 6832

Email & Skype: info@chipsmall.com Web: www.chipsmall.com

Address: A1208, Overseas Decoration Building, #122 Zhenhua RD., Futian, Shenzhen, China



LOC	DIST	REV	DESCRIPTION	DATE	BY	APPD
GP	00	U	OBSOLETE -1,-4 PER 051D-0014-00	2MAY01	AH	JR



- ① HOUSING-MATERIAL : LIQUID-CRYSTAL-POLYMER.
- ② CONTACT-MATERIAL : PHOS. BRONZE.
- ③ LATCH-MATERIAL : STAINLESS STEEL.
- ④ CONTACT-PLATE: 0.00508[.000200] MIN. TIN/LEAD OVER 0.00127 [.000050] MIN NICKEL.
- ⑤ IN ADDITION TO THOSE RECOMMENDED "SIMM" P.C. BOARD DIMENSIONS AND TOLERANCES SHOWN, ALL JEDEC SPECIFICATIONS APPLY AS SHOWN ON MO-116, ISSUE A.
- ⑥ RECOMMENDED MATING S.I.M.M. TAB METALLURGY: BASE METAL-COPPER. PLATING TO BE 0.00762[.000300] MIN TIN/LEAD OVER 0.00127[.000050] MIN NICKEL.
- ⑦ PACKAGED IN SPECIAL TUBES.
- ⑧ 'S' IDENTIFIER LOCATED APPROXIMATELY AS SHOWN.
- ⑨ OBSOLETE

W/CTR POST	F	E	D	C	B	A	NO. OF POSN	PART NO
WITHOUT CENTER POST	107.95[4.250]	101.19[3.984]	55.88[2.200]	44.45[1.750]	115.32[4.540]	95.25[3.750]	72	⑨ 2-822110-3
	67.31[2.650]	60.55[2.384]	35.56[1.400]	24.13[.950]	74.68[2.940]	54.61[2.150]	40	⑨ 822110-6
WITH CENTER POST	67.31[2.650]	60.55[2.384]	35.56[1.400]	24.13[.950]	74.68[2.940]	54.61[2.150]	40	⑨ 822110-5
	118.11[4.650]	111.35[4.384]	60.96[2.400]	49.53[1.950]	125.48[4.940]	105.41[4.150]	80	⑨ 822110-4
	107.95[4.250]	101.19[3.984]	55.88[2.200]	44.45[1.750]	115.32[4.540]	95.25[3.750]	72	822110-3
	102.87[4.050]	96.11[3.784]	53.34[2.100]	41.91[1.650]	110.24[4.340]	90.17[3.550]	68	⑨ 822110-2
	97.79[3.850]	91.03[3.584]	50.80[2.000]	39.37[1.550]	105.16[4.140]	85.09[3.350]	64	⑨ 822110-1

THIS DRAWING IS A CONTROLLED DOCUMENT.

AMP Incorporated  
Harrisburg PA 17105-3608

CONNECTOR, MICRO-EDGE, .050, LP, TIN PL, W/METAL LATCH

AMP 4805 REV 23FEB95

02MAY01 4:46pm amp12184